

USER'S MANUAL for DDcafor 892max





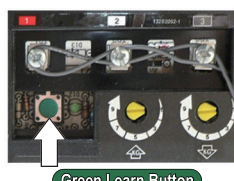

1. Preparation: Check the Remote Control's Working Mode

Each button on the remote has two working modes, compatible with different types of door openers.

The **LED indicator's color** represent these modes. **To determine the correct working mode:**

- Identify the **Learn Button color** on your garage door opener.
- Switch your **remote** to the corresponding **LED status (working mode)** before programming.

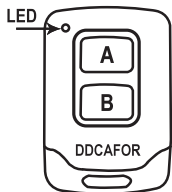
Refer to the chart for details

Working Mode: 1		
LED status:  GREEN		
Work for openers features: <ul style="list-style-type: none">• Purple Learn Button• Red/Orange Learn Button		
Working Mode: 2		
LED status:  RED		
Work for openers features: <ul style="list-style-type: none">• Yellow Learn Button• Green Learn Button		

- **The shape of the Learn Button** (Round or Square) **does not affect compatibility.**
- **If the LED color** (Working Mode) **is not compatible with your garage door opener, switch the remote to another Working Mode and reprogram it.**

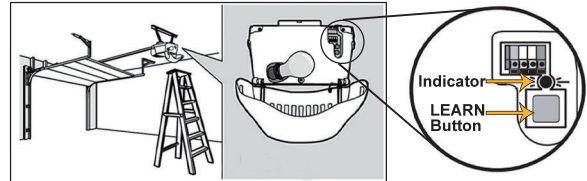
2. How to Switch the Button's working Mode on the Remote?

- ① **Enter Mode Selection:** Press and hold buttons **A + B** simultaneously until the **LED** starts blinking. Then release both buttons.
- ② **Switch Modes:** Press the button you would like to configure.
The **LED status** will change to either **RED** (Working Mode 2) or **GREEN** (Working Mode 1).
- ③ Release the button, try to program the button to your opener.



3. Syncing New Remote with Your Garage Door Opener

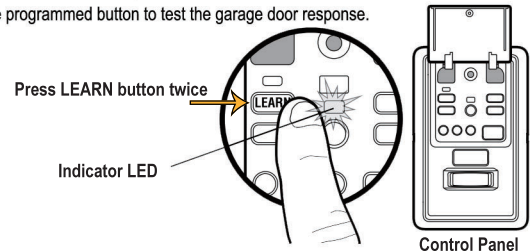
- ① Press and release **LEARN BUTTON** on the opener motor, control board or external receiver.
The **programme indicator LED** will glow steadily for **30 seconds**.
- ② **Within 30 seconds**, press and hold the button on the **Remote** that you want to use for operation.
Release the button until the motor lights blink.
If the light bulb is not installed, "**click~ click~**" will be heard.
- ③ Press the programmed button to test the garage door response.



NOTE: For LiftMaster models 3900, 8500, 8500W, 8900W, and 98022:

Program new remotes using the Control Panel.

- ① Press and release **LEARN BUTTON twice** on the **Control Panel**.
The **programme indicator LED** will glow steadily for **30 seconds**.
- ② **Within 30 seconds**, press and hold the button on the **Remote** that you want to use for operation.
Release the button until the motor lights blink.
If the light bulb is not installed, "**click~ click~**" will be heard.
- ③ Press the programmed button to test the garage door response.



4. Erase / Delete remote controls:

Press and hold the **LEARN button** for about 6 seconds, until **programme indicator LED** goes off.
All previously programmed remotes will be erased.

5. Customer Service Support

For assistance, please contact us at Garage.US@outlook.com

We will reply to your email promptly and assist you actively.

We will respond promptly. Providing your **order ID#** will help speed up processing.

FCC Statement

This equipment has been tested and found to comply with the limits for a Class B digital device, pursuant to Part 15 of the FCC Rules.

These limits are designed to provide reasonable protection against harmful interference in a residential installation.

This equipment generates, uses, and can radiate radio frequency energy. If not installed and used in accordance with the instructions, it may cause harmful interference to radio communications. However, there is no guarantee that interference will not occur in a particular installation.

If this equipment does cause harmful interference to radio or television reception—determined by turning the equipment off and on—the user is encouraged to try to correct the interference by one or more of the following measures:

- Reorient or relocate the receiving antenna.
- Increase the separation between the equipment and receiver.
- Connect the equipment to an outlet on a circuit different from that to which the receiver is connected.
- Consult the dealer or an experienced radio/TV technician for assistance.

Caution:

Any changes or modifications to this device not expressly approved by the manufacturer may void the user's authority to operate the equipment.

This device complies with Part 15 of the FCC Rules. Operation is subject to the following two conditions:

1. This device may not cause harmful interference; and
2. This device must accept any interference received, including interference that may cause undesired operation.

RF Exposure Information

This device has been evaluated to meet general RF exposure requirements.

It can be used in portable exposure conditions without restriction.