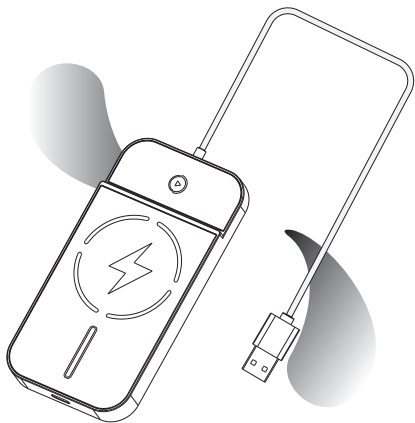


Wireless CarPlay User Manual



Warning

Please read all instructions and warnings before using this product.

- For your safety and the safety of other road users, and to comply with the traffic laws of your country, please do not watch videos while driving.

- Do not store this product in a high temperature, strong light, or strong magnetic field environment, and avoid placing it in other harsh environments.

- Avoid strong physical impact, including hitting, stepping on, or squeezing.

- Avoid powering the product with a power source that exceeds the rated voltage of the product, as this may cause the product to malfunction.

- Do not disassemble this product, as it will void the warranty.

- If the consumer violates the product explanation and uses it improperly, they will bear all the consequences, and the company will not bear any legal responsibility.

* This product is only compatible for vehicles with factory wired CarPlay or Android Auto.

* The information in this manual is subject to change without prior notice.

Introduction

This product not only converts wired CarPlay and Android Auto into wireless versions, but also provides convenient Qi wireless charging — simplifying your driving experience by reducing cable clutter.

Supported Devices

Wireless CarPlay/Android Auto Function:

iPhone: iPhone 8 or newer

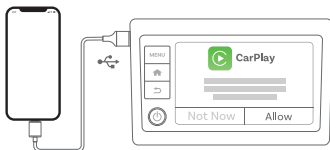
Android: Compatible Android smartphones that support wireless Android Auto

Wireless Charging Function:

All Qi-enabled smartphones and devices that support Qi wireless charging

Check the adaptability

How to check for factory wired CarPlay of vehicles. Plug in the iPhone into the car's USB port using the original factory cable. If the following notification pops up on the car, it means your car has built-in CarPlay.



- * iPhones must run iOS 10 or a later version.
- * If you are still unable to determine whether your car supports wired CarPlay, please Contact your car dealer for

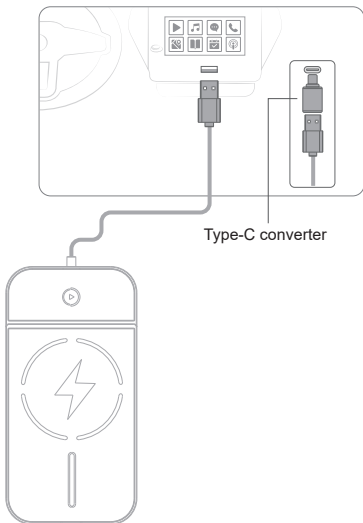
How to check for factory wired Android Auto of vehicles. Plug in your Android phone into the car's USB port using the original factory cable. If the following notification pops up on your car, it means your car has Android Auto built-in.



- * The phone must run Android 11 or a later version.
- * If you are still unable to determine whether your car supports wired Android Auto, please Contact your car dealer for help.

How to Use

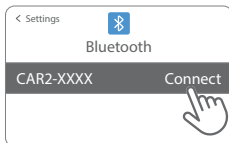
1. If your vehicle has a USB-A port, plug the adapter's USB-A connector directly into the car's center console.
2. If your vehicle only has a USB-C port, use the included USB-C adapter to connect the USB-A plug.



Wireless CarPlay/Wireless Android Auto

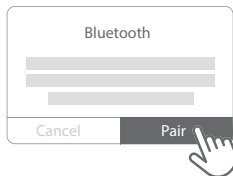
1. Turn on your phone's Wi-Fi and Bluetooth, then pair it with a Blue-tooth device named CAR2-XXXX

1

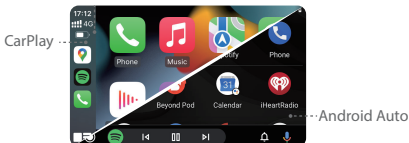


2. Agree to all requests.

2



3. Successfully connected to CarPlay/Android Auto (and there is no need to repeat the pairing steps the next time it starts).



Wireless Connection Indicators

Power on: After connecting to the car, the indicator flashes once per second (after ~6 seconds).

Green Light: Wireless CarPlay



Blue Light: Wireless Android Auto



Pairing mode: The indicator blinks rapidly during phone pairing.

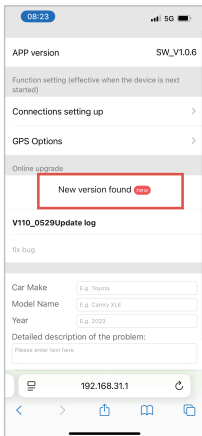
Important Note

If you have previously connected a phone to the wireless adapter and want to switch to a different phone, make sure to disable Bluetooth and Wi-Fi on the first phone before pairing the new one.

Online Update (iPhone Only)

To update the firmware via an iPhone:

1. Connect your iPhone to the adapter' s Wi-Fi network.
Wifi Name: ADAPTOR-XXXX
WiFi Password: 88888888
2. Open Safari and enter 192.168.31.1.
3. Download and install the latest software version.



4. Do not power off the device during the update process.

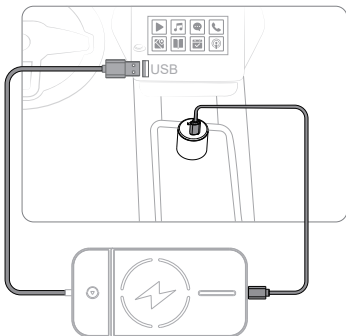
Part 2 - Wireless Charging Function

Charging Port Selection

Plug the car charger into the vehicle's 12V power outlet (commonly known as the cigarette lighter socket), and use the included USB-C cable to connect the device to the car charger.

Note: Do not connect the USB-C cable directly to the vehicle's built-in USB-C port. These ports often provide insufficient power, resulting in slow charging or no charging at all.

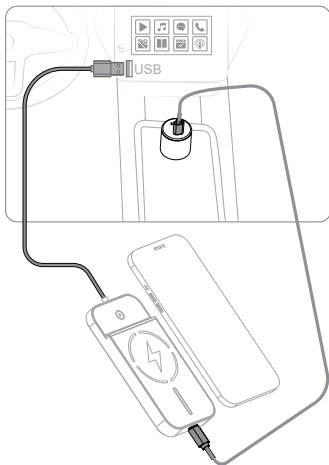
For optimal performance, use a charging port that provides at least 18W of power.



Charging

For phones with built-in magnetic rings, the device automatically magnetically attaches for optimal charging.

For phones without magnetic rings, use the included magnetic ring by either placing it inside your phone case or sticking it directly onto the phone's back to ensure a stable magnetic connection.



FCC Warning

15.19 Labeling requirements.

This device complies with part 15 of the FCC Rules. Operation is subject to the following two conditions: (1) This device may not cause harmful interference, and (2) this device must accept any interference received, including interference that may cause undesired operation.

15.21 Information to user.

Any Changes or modifications not expressly approved by the party responsible for compliance could void the user's authority to operate the equipment.

15.105 Information to the user.

Note: This equipment has been tested and found to comply with the limits for a Class B digital device, pursuant to part 15 of the FCC Rules. These limits are designed to provide reasonable protection against harmful interference in a residential installation. This equipment generates uses and can radiate radio frequency energy and, if not installed and used in accordance with the instructions, may cause harmful interference to radio communications. However, there is no guarantee that interference will not occur in a particular installation. If this equipment does cause harmful interference to radio or television reception, which can be determined by turning the equipment off and on, the user is encouraged to try to correct the interference by one or more of the following measures:

- Reorient or relocate the receiving antenna.
- Increase the separation between the equipment and receiver.
- Connect the equipment into an outlet on a circuit different from that to which the receiver is connected.
- Consult the dealer or an experienced radio/TV technician for help.

FCC RF Radiation Exposure Statement:

1. This Transmitter must not be co-located or operating in conjunction with any other antenna or transmitter.
2. This equipment complies with RF radiation exposure limits set forth for an uncontrolled environment.
3. This equipment should be installed and operated with minimum distance 20cm between the radiator and your body.