

# Advertising Screen Projector with Media Player

## Operation Manual

This Advertising Screen Projector supports wireless peer-to-peer connectivity with smartphones to transmit images and videos. The device does not have internal storage and requires external storage devices (USB drives or TF cards). It allows users to delete content via a smartphone or remote control, supports scheduled power on/off, date display, screen orientation adjustment (landscape/portrait), and wireless screen mirroring from smartphones.

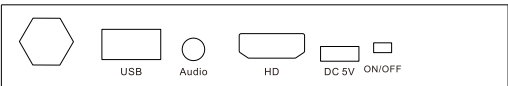
1. Product Appearance	3
2. Remote Control Instructions	3
3. Functional Operations	4
3.1 Connection Method of the Advertising Projector	4
3.2.Main Interface Functions	4
3.3. Mobile Phone Management Method (Non-Screen Mirroring)	5
4. Settings Details	9
5. Wireless Screen Mirroring	11
6. File Copy	11
7. Product Accessories	12
8. Precautions	12

### 1.Product Appearance

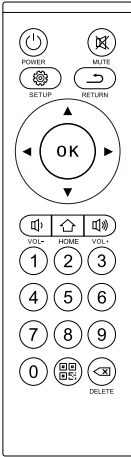
Front Panel Diagram:



Rear Panel Diagram:



### 2.Remote Control Instructions



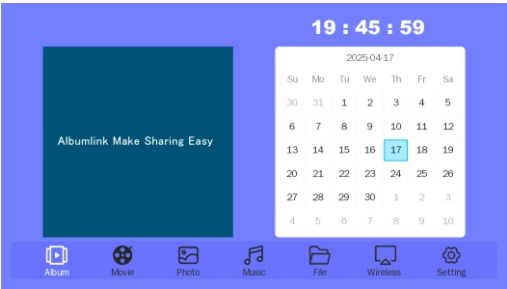
- Power On/Off Button: Turns the device on and off. (When turned off, it enters standby mode. To completely turn off the device, please disconnect the power supply.)
- Mute Button: Sets the device to mute.
- Settings Button: Directly opens the device settings screen.
- Return Button: Goes back to the previous operation.
- Direction Keys/OK Confirmation Button: Moves the cursor left, right,down, or up and serves as a confirmation function.
- Volume Down Button: Lowers the output volume.
- Volume Up Button: Increases the output volume.
- Number Keys: In mixed play mode, can be used to select the program to play by number.

QR Code Button: When you need to connect a mobile phone to the device, pressing this button will display the QR code for scanning and connection.

DELETE Button: If the currently playing file is not needed, you can directly press this button to delete the current file.

### 3.Function Operations

- 3.1 Connection Method of the Advertising Projector
  - 3.1.1.Connect this device to a large screen, TV, projector, or other display devices via an HDMI cable.
  - 3.1.2 Use the original power supply for power
  - 3.1.3 After turning on the advertising projection device, the main interface will be displayed on this device (as shown in the picture below).



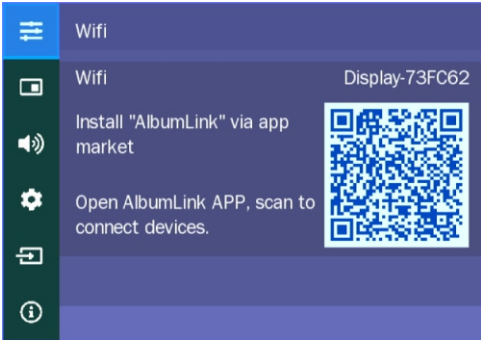
- 3.1.4 For wireless screen mirroring, APP remote control, and file uploading, it is recommended to operate within an open distance of 5 meters.
- 3.2 Main Interface Functions
  - 3.2.1 The time can be viewed on the main interface. (After installing" AlbumLink" APP and connecting, it will synchronize automatically.)
  - 3.2.2 Media Icon: The media icon will automatically play videos and pictures stored in the device.
  - 3.2.3 Movie Icon: Clicking the movie icon will automatically play videos stored in the device.
  - 3.2.4 Picture Icon: Clicking the picture icon will display pictures stored in the device.

3.2.5 Music Icon: If you want to play music, please open it from the music icon on the main interface. You cannot directly open and play music from a folder.

3.2.6 File icon: You can view the videos, pictures and music stored in the device. Note that the music cannot be directly opened and played in the folder. If you need to play music, please open it through the music icon on the main interface.

3.2.7 Wireless Screen Mirroring Icon: Click this icon, then open the wireless screen mirroring function on your mobile device, search for the SSID name of this device (Display - xxxxxx) and select to connect. For detailed instructions, refer to Section V (Wireless Screen Mirroring) on page 9.

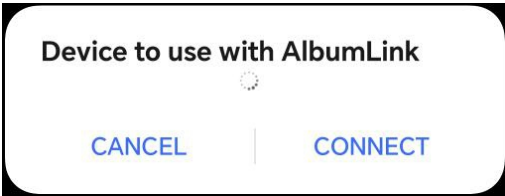
3.2.8 Settings Icon: In the settings, you can view the device QR code and SSID number, language, display orientation, play settings, color adjustment, factory reset, and other settings. You can view the SSID name of this device in the settings. Refer to the following figure.



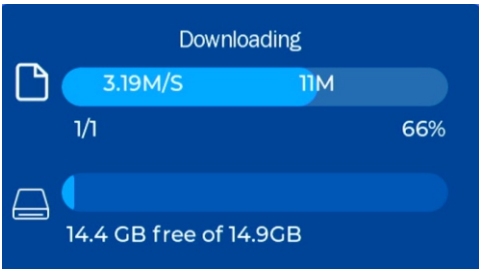
3.3 Mobile Phone Management Method (Non-Screen Mirroring)

3.3.1 Search for and install the “AlbumLink” APP in the Android or Apple mobile phone application market, and enable the relevant permission settings.

3.3.2 Open the “AlbumLink” APP on your mobile phone and scan the QR code of this device to connect.



3.3.3 After connecting, you can select pictures and videos from your mobile phone to send to this device for playback. (Since this device has no built-in storage, files need to be stored on an external storage device for playback.) After sending, the device will automatically play the latest sent content. (Files are played according to the play mode set on the machine.)



3.3.4 Click the "All" option in the upper - left corner of the mobile phone to view more picture and video folders on the mobile phone, and then select the files you want to send to this device. After selecting the files, click "Send" directly.

3.3.5 Multiple pictures or videos can be selected and sent to this device. Click the top - right corner of the picture or video, and it will show which file is currently selected. Once the selection is made,

simply click "Send".

3.3.6 In cases such as the mobile phone screen turning off, receiving a call, or exiting the current operation interface, the connection will be automatically interrupted. When you need to upload files or perform other operations, please reconnect to the device.

Reconnection method:

a: Open the “AlbumLink” APP.

b: Click any option among "Album", "Remote Control", or "System", and a list of previously connected devices will be prompted. Select the device you want to connect to.

c: Click the corresponding device name to connect. (Note: Long - press the device name to delete the device; you can also modify the device name by clicking the pencil icon behind it.)

3.3.7 System option functions on the APP:

Timed Power - On/Off: You can set the device to turn on and off at a scheduled time. Note that after setting the timed power - on/off, do not manually turn the device on or off or cut off the power supply.

Rotate Screen: Allows you to cycle through four display orientations, 0 degrees、 90 degrees、 180 degrees、 and 270 degrees.

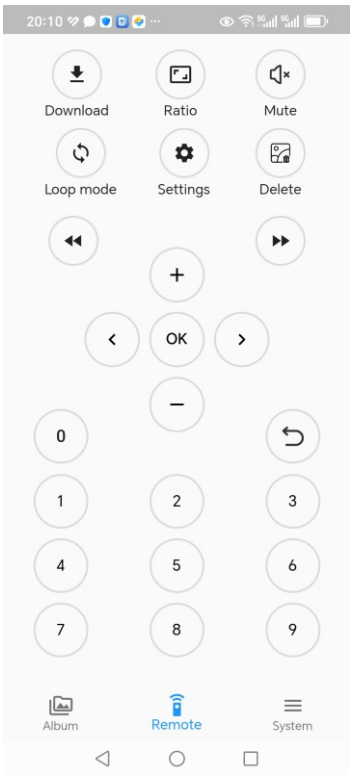
Disk Capacity: Enables you to check the capacity of external storage.

Format Disk: Allows you to format external storage such as U disks and TF cards in real - time.

Help: You can view some operation questions encountered during use.

Firmware Upgrade: Used to upgrade the device software.

3.3.8 Introduction to the remote control functions on the “AlbumLink” APP:



Download: When the APP is connected to this device, files viewed on this device can be downloaded to the mobile phone by clicking.

Home: When the APP is connected to this device, you can exit the playback state and return to the main interface.

Mute: When the APP is connected to this device, the player can be set to mute.

QR Code: When the APP is connected to this device, you can return to the main interface to view the player's QR code.

Settings: When the APP is connected to this device, you can enter the player's settings interface to configure relevant playback functions and modes.

Delete: Select a file and press this button to delete the current file.

Fast - Forward/Rewind: Controls the progress of video playback when playing a video.

Volume Up: This button has two functions, increasing the volume and acting as the up - arrow direction key.

Volume Down: This button has two functions, decreasing the volume and acting as the down - arrow direction key.

Left Arrow: When playing files, it switches to the previous file; when controlling the cursor, it moves the cursor to the left.

Right Arrow: When playing files, it switches to the next file; when controlling the cursor, it moves the cursor to the right.

Return Button: Press this button to execute the return command.

Number Keys: Use number keys for digital on - demand of corresponding files.

Note: The above functions are still being continuously improved. Please refer to the actual functions for any differences.

#### 4. Settings Details

Open the settings and set the corresponding modes and functions according to your needs.

4.1 WIFI: The WIFI item in the settings is the device name and device QR code of this device.

4.2 System Settings:

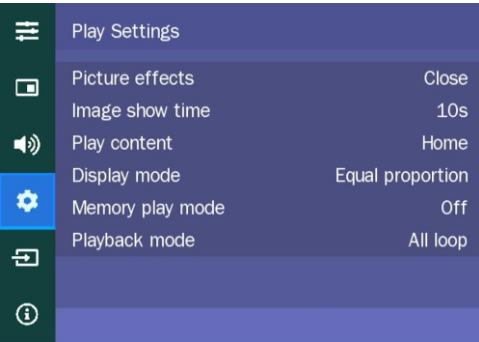
Display Orientation: You can set the display to horizontal or vertical.

Language: Supports 10 languages including Chinese, English, French, Russian, Japanese, etc.

Time Option: When enabled, the time can be displayed in different positions such as the upper - left or upper - right corner during program playback.

4.3 Timed Play: The timed power on/off function needs to be set through the "AlbumLink" APP.

4.3 Play Settings (as shown in the following figure):



4.3.1 Picture Effects: You can set the display effect when pictures are switched.

4.3.2 Picture Display Time: You can set the display duration of pictures, such as 5 seconds, 10 seconds, 15 seconds, etc.

4.3.3 Boot Mode: There are options like mixed play. If you want both videos and pictures to be played, set it to mixed play (all play).

4.3.4 Display Ratio: You can set the display ratio.

4.3.5 Play Memory: The play memory switch is used in conjunction with the mixed play mode in the boot mode. When the boot mode is set to mixed play and the memory switch is enabled, if the device restarts while playing pictures, it will continue playing pictures; if it restarts while playing videos, it will continue playing videos.

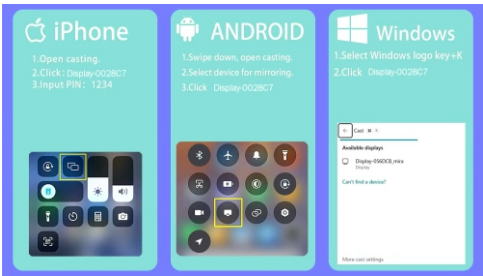
4.3.6 Playback Modes: Three loop modes are available, namely, loop all videos and pictures, loop a single item, and play randomly.

4.4 Color Settings: The display effect can be optimized by adjusting the color settings.

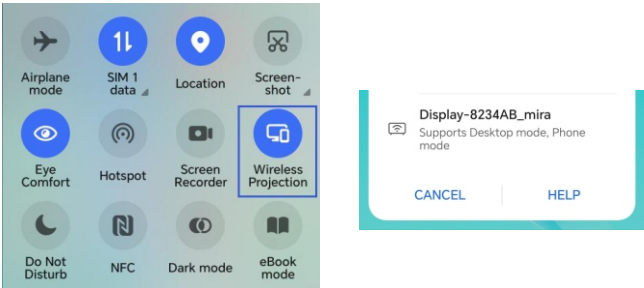
4.5 System Information: In the system information section, you can restore the device to its factory settings and check the software version.

#### 5. Wireless Screen Mirroring

5.1 Open the wireless screen mirroring option on the main interface (as shown in the following figure).



5.2 Open the wireless screen mirroring option in the control center of your mobile phone (as shown in the following figure).



5.3 After the wireless screen mirroring function of the mobile phone is enabled and it searches and finds the name of this device, click to connect. Then, the mobile phone screen will be projected onto a large screen or TV.

#### 6. File Copying

This device has no built - in storage space. You can connect an external TF card or U disk as the device's storage. When an TF card

is connected to this device, it supports automatically copying the contents of the U disk to the TF card and automatically overwriting all the previous contents in the TF card.

Location: Open the system settings in the settings, find the USB option in the system settings, and use the left and right keys to select from three options: play, copy, and auto - identify.

\* When set to the play option, when the device is powered on or restarted, it will directly play according to the set boot mode (auto - play).

\* When the device is connected to an TF card and set to the copy option, when an external U disk is connected, it will automatically copy all videos, pictures, and music in the U disk to the TF card and play the contents of the TF card according to the boot mode.

\* When set to automatic recognition, connect the TF card first, and then connect the USB flash drive (the automatically copied USB flash drive must have an "auto.ini" file. The method for creating the "auto. ini" file is to create a TXT text document in the root directory of the USB flash drive and change the name of the document to "auto.ini").

The contents of the USB flash drive will be automatically copied to the card and overwritten with the previous contents on the card If only the card or USB flash drive is connected, files will be played according to the boot mode

#### 7. Product accessories

HOST	Remote Control
5V/2A Power Supply	Power Cable
Instruction Manual	

#### 8. Precautions

8.1 Please use the original power supply to avoid damage to the device due to an incompatible power supply.

8.2 Placing the device in a humid or high - temperature environment will shorten its service life. It is prohibited to place it in a humid or

high - temperature working environment.

8.3 Please keep the remote control properly. When connecting the mobile phone to the "AlbumLink" app for the first time, it is necessary to scan the device's QR code, and only the remote control can bring up the device's QR code.

8.4 When the remote control is not used for a long time, please remove the battery to avoid damaging the remote control.

8.5 When this device is used in scenarios such as commercial displays, please be cautious when transmitting picture or video content from your mobile phone.

8.6 When installing at high altitudes, please pay attention to fixing the device to prevent it from falling.

8.7 This device is not a universal decoder and cannot guarantee support for all pictures, music, and videos.

8.8 It is strictly prohibited to modify or disassemble the device. If this leads to issues with after - sales service, you shall bear the consequences on your own.

**FCC Warning:**

This equipment has been tested and found to comply with the limits for a Class B digital device, pursuant to part 15 of the FCC Rules. These limits are designed to provide reasonable protection against harmful interference in a residential installation. This equipment generates, uses and can radiate radio frequency energy and, if not installed and used in accordance with the instructions, may cause harmful interference to radio communications. However, there is no guarantee that interference will not occur in a particular installation. If this equipment does cause harmful interference to radio or television reception, which can be determined by turning the equipment off and on, the user is encouraged to try to correct the interference by one or more of the following measures:

- Reorient or relocate the receiving antenna.
- Increase the separation between the equipment and receiver.
- Connect the equipment into an outlet on a circuit different from that to which the receiver is connected.
- Consult the dealer or an experienced radio/TV technician for help.

**Caution:** Any changes or modifications to this device not explicitly approved by manufacturer could void your authority to operate this equipment.

This device complies with part 15 of the FCC Rules. Operation is subject to the following two conditions:

(1) This device may not cause harmful interference, and (2) this device must accept any interference received, including interference that may cause undesired operation.

This equipment complies with FCC radiation exposure limits set forth for an uncontrolled environment. This equipment should be installed and operated with minimum distance 20cm between the radiator and your body.