



# **Spine Sensor RR-SS-A00**

---

## **User Manual**

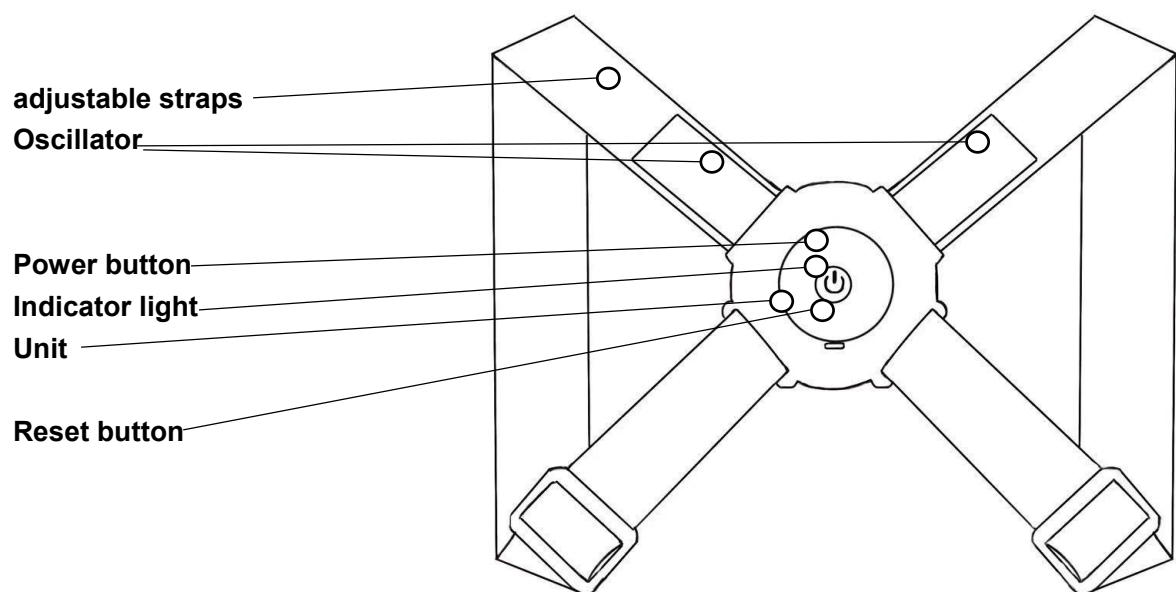
\* Please read the user manual carefully before use and keep it in a safe place for future reference.

# Spine Sensor

## Product Overview

The Spine Sensor contains a smart chip that monitors spinal alignment in real-time. It vibrates when poor posture is detected, prompting you to adjust. This device helps you correct posture, maintain a healthy physique, and encourage healthy habits.

This device consists of a main unit and two adjustable straps.



## Product Features

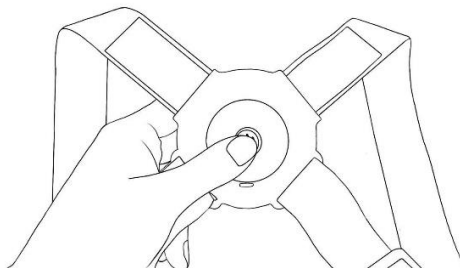
1. This product is designed based on ergonomics, combining scientific principles with aesthetic appeal.
2. Equipped with an internal smart chip, supporting device connection to the APP to realize real-time monitoring of spinal tilt and curvature.
3. Equipped with dual-sided vibration modules, it provides precise reminders for users to proactively adjust their posture, eliminating the need for enforced correction.
4. Using an "8" shaped elastic strap with adjustable length ensures a comfortable fit without shoulder compression.
5. With a standard Type-C charging port, this polymer lithium battery provides safe and reliable energy storage.
6. Supports both offline and online usage modes.
7. The app records dynamic data, providing an intuitive experience of the process of improving posture.

## Usage Notes

1. In order to use this product safely and correctly, and to prevent harm to yourself and others, please read this instruction manual carefully.
2. This product is suitable for use by children aged 4 and above, as well as teenagers and adults.
3. Please do not bend the vibrator strap excessively or with force.
4. Charge the main unit completely when using the product for the first time, or after it's been stored for a long time.
5. Please do not use the device while it is charging.
6. Please do not use this product in areas with a strong electromagnetic field.
7. The operating temperature for this product is -10°C to +55°C, with a relative humidity of up to 80%. The storage temperature is -10°C to +50°C, with relative humidity of up to 80%. Using or storing the product outside of this specified temperature and humidity range may negatively affect its performance.
8. To prevent battery degradation during prolonged storage, remember to periodically charge the main unit.
9. This product is not waterproof. Please avoid exposing the main device to moisture or immersing it in water.
10. Avoid high temperatures, dust, and direct sunlight exposure to the device.
11. Please do not throw the product into fire or expose it to heat, as this may cause battery leakage, overheating, or explosion risks.
12. If the device battery is completely depleted, it will be unable to synchronize the real-time clock with the app. Connect to the app immediately to automatically synchronize the time.
13. Do not disassemble or repair the equipment yourself. If there are any issues, please contact the after-sales service department.

## Method of Use

1. Holding the power button for 3 seconds will turn the device on or off.



2. Use your phone to scan the QR code to download the app.

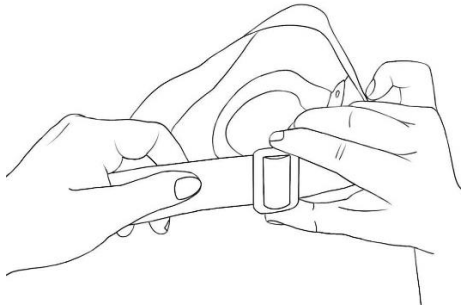
IOS



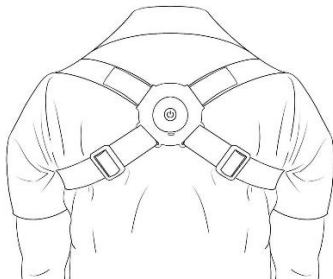
Android



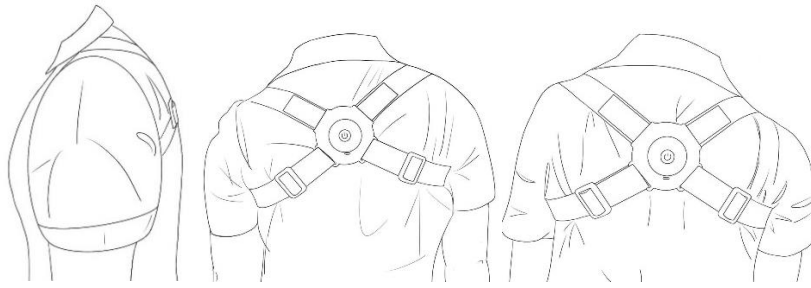
3. Adjust the shoulder straps to the appropriate length, with the vibrator oriented upwards, and ensure the device is worn properly.



4. Adjust to the correct posture, then set the reminder angle and delay time according to your personal needs on the app. Press the reset button on the app or the reset button on the main device to reset the settings and begin operation.



5. When the device detects the user leaning forward, both vibrators vibrate simultaneously; when leaning to the left, the left vibrator vibrates; and when leaning to the right, the right vibrator vibrates.



6、Users can monitor the real-time angular changes of forward leaning, left leaning, and right leaning through the app, as well as view the number of corrections made within each time period.

## Device Status Explanation

Device Status	Operation	Indicator light
Power on	Press and hold for 3 seconds to power on	Green light flashing
Power off	Press and hold for 3 seconds to power off	Indicator light off
Connect Bluetooth	Connect Bluetooth in the app.	The indicator light changed from flashing to steady on.
Charge	Connect power	The red light flashing indicates that charging is in progress. The green light staying on indicates that charging is complete.
Low battery	In use	The red light flashing indicates offline. The red light steady on indicates a connection.

## Precautions

1. It's recommended to wear only a thin, close-fitting layer of clothing under the product. Too many or bulky layers can interfere with the vibration feedback.
2. This device is for monitoring and alert purposes only. If the user has severe scoliosis or obvious shoulder asymmetry, please consult a healthcare professional promptly.
3. It is recommended to wear the product for two hours each day. Users can customize the alert angle and delay time according to their individual needs.
4. When using the device in offline mode, it is recommended to connect to the app every 4 hours to upload data for storage.

## Charging Instructions

1. This product utilizes a Type-C port for charging. A compatible charging cable is included. Users must use a power adapter compliant with national 3C standards. Rated input: 5V=1A.
2. When you connect the device to a power supply, the indicator light will flash, showing that the device is charging. Once the device is fully charged, the indicator light will remain a solid green. The device takes approximately 2 hours to charge.
3. To avoid overcharging and potentially damaging the lithium battery, please disconnect the power source promptly after charging is finished.

## Common Issues

1. Low battery or charging in progress may prevent the device from turning on. Please wait until charging is complete before use.
2. An improperly chosen adapter, or damage to the charging port or charging cable, could cause charging failure. You should try replacing the adapter and cable.
3. If the device is not worn close to the body, such as wearing multiple layers of clothing or thick clothing before attaching the product, the perception may weaken or vibration signals may be lost. The product should be worn outside of close-fitting clothing.

## Product specifications

Product name	Spine Sensor
Product model	RR-SS-A00
Product size	F
Charging port	Standard USB Type-C port
Built-in battery specifications	300mAh/3.7V
Rated power	0.4W
Charging time	About 2h
Standby runtime	About 100h
Charging voltage	5V
Total net weight	85g
Material	Polyester + ABS
Product List	Smart Spinal Corrective Brace x1 Charging cable x1 Manual x1

## Customer Service Information

The warranty period is one year.

1. Within one year from the date of receipt, if the product experiences quality issues not caused by human damage, free warranty service can be provided.
2. Repairs caused by reasons not related to product quality or repairs beyond the warranty validity period will be at the user's expense.

The following conditions are not covered under the free warranty.

- No proof of purchase or warranty card has been provided, or the warranty period has expired.
- Damage caused by force majeure factors.
- Damage caused by not following the instructions for use, maintenance, or storage as specified in the manual.
- Damage caused by human action, including dropping, hitting, water damage, moisture exposure, and high heat.
- Unauthorized disassembly, repair, or modification of this product by the user is prohibited without the written authorization of the company.

Note:

- Before requesting a return or exchange, please contact our online customer service first to learn about the detailed after-sales service information.
- When returning or exchanging goods, please ensure that the free gifts and accessories are intact and sent back together with the product.
- For products with an issued invoice, please ensure that the invoice is returned together with the product for after-sales returns.
- To avoid delays in service caused by the inability of courier services to accept cash-on-delivery packages, please do not use cash-on-delivery options.

## Certificate conformity

**Dongguan Vincent Rehab Devices Company Limited**  
**Product Model: RR-SS-A00**                      **Inspector:**

## Warranty Card

Account ID		
Product serial number		
Order number		
Purchase channel		
Return <input type="checkbox"/>		Exchange <input type="checkbox"/> Warranty <input type="checkbox"/>
User Name		
Phone number		
User address		
Repair history	Date	Cause of the fault and treatment status

### **Dongguan Vincent Rehab Devices Company Limited**

Production Address: 11 Shabu Street, Qiaolong, Tangxia Town, Dongguan City, Guangdong Province, P.R.C

Company Website: [www.vincentmedical.com](http://www.vincentmedical.com)

Phone: +86 (0) 769 8786 4356

Postal Code: 523730



This device complies with part 15 of the FCC Rules. Operation is subject to the following two conditions: (1) This device may not cause harmful interference, and (2) this device must accept any interference received, including interference that may cause undesired operation.

Any Changes or modifications not expressly approved by the party responsible for compliance could void the user's authority to operate the equipment.

**Note:** This equipment has been tested and found to comply with the limits for a Class B digital device, pursuant to part 15 of the FCC Rules. These limits are designed to provide reasonable protection against harmful interference in a residential installation. This equipment generates uses and can radiate radio frequency energy and, if not installed and used in accordance with the instructions, may cause harmful interference to radio communications. However, there is no guarantee that interference will not occur in a particular installation. If this equipment does cause harmful interference to radio or television reception, which can be determined by turning the equipment off and on, the user is encouraged to try to correct the interference by one or more of the following measures:

- Reorient or relocate the receiving antenna.
- Increase the separation between the equipment and receiver.
- Connect the equipment into an outlet on a circuit different from that to which the receiver is connected.
- Consult the dealer or an experienced radio/TV technician for help.

#### FCC Radiation Exposure statement

The device has been evaluatec to meel general RF exposure requirement. The device can be used in portable exposure condition without restriction.