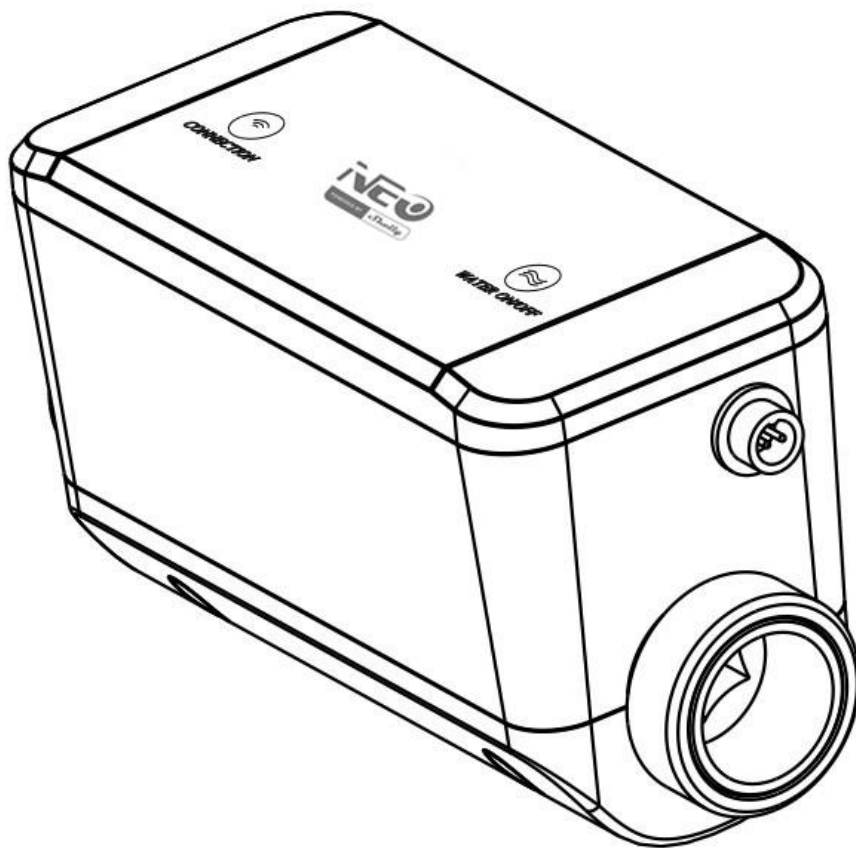


Wi-Fi water valve user manual



FCC STATEMENT :

This device complies with Part 15 of the FCC Rules. Operation is subject to the following two conditions:

(1) This device may not cause harmful interference, and

(2) This device must accept any interference received, including interference that may cause undesired operation.

Warning: Changes or modifications not expressly approved by the party responsible for compliance could void the user's authority to operate the equipment.

NOTE: This equipment has been tested and found to comply with the limits for a Class B digital device, pursuant to Part 15 of the FCC Rules. These limits are designed to provide reasonable protection against harmful interference in a residential installation. This equipment generates uses and can radiate radio frequency energy and, if not installed and used in accordance with the instructions, may cause harmful interference to radio communications. However, there is no guarantee that interference will not occur in a particular installation. If this equipment does cause harmful interference to radio or television reception, which can be determined by turning the equipment off and on, the user is encouraged to try to correct the interference by one or more of the following measures:

- Reorient or relocate the receiving antenna.

- Increase the separation between the equipment and receiver.

- Connect the equipment into an outlet on a circuit different from that to which the receiver is connected.

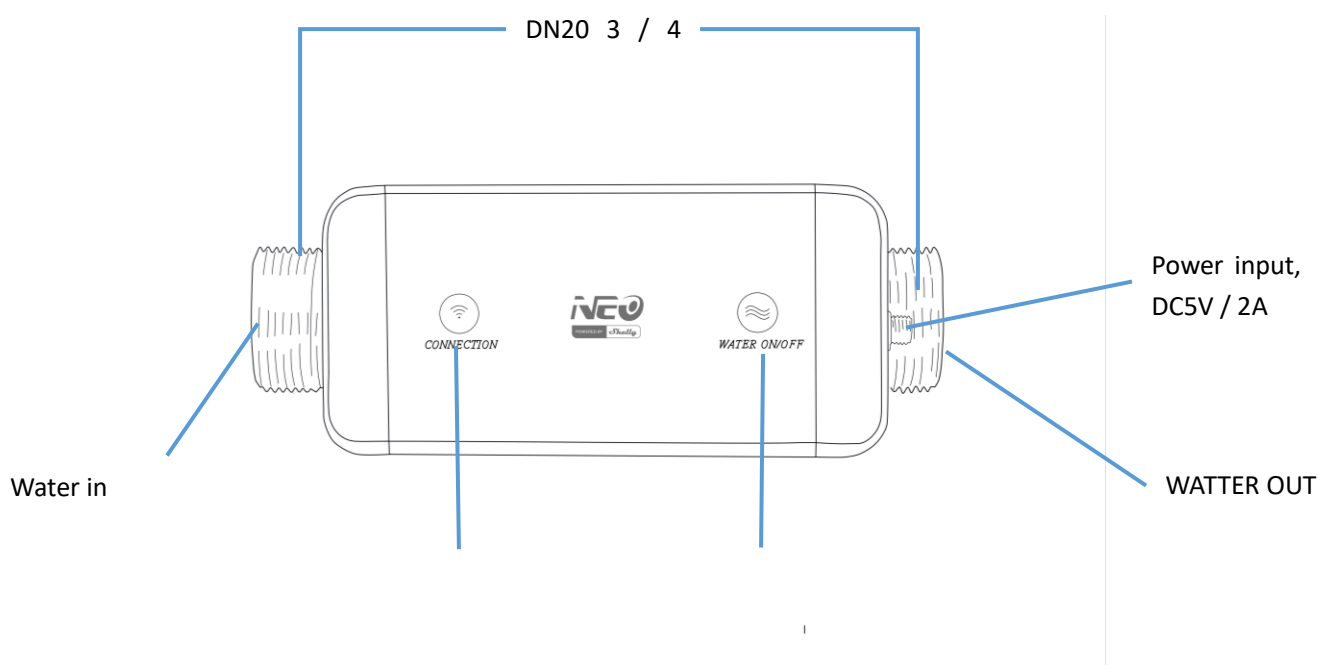
- Consult the dealer or an experienced radio/TV technician for help.

FCC Radiation Exposure Statement:

This equipment complies with FCC radiation exposure limits set forth for an uncontrolled environment. This equipment should be installed and operated with minimum distance 20cm between the radiator & your body.

Product configuration and installation

1. Product structure

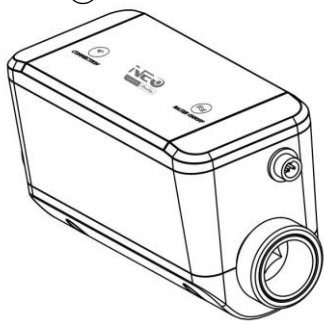


Reset button(blue)

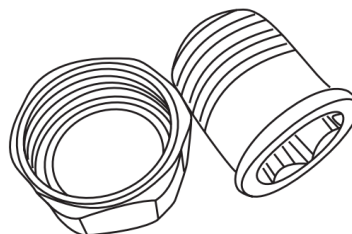
Water ON/OFF (ON:
blue; :OFF:red)

2. Packaging accessories

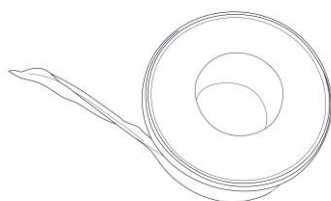
① water valve



② Water connector * 2



③ Waterproof tape (3M)*2



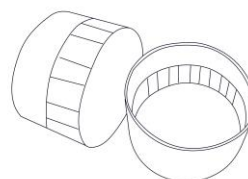
④ Power cable (5M)



⑤ Waterproof silicone pad * 2



⑥ Threaded protective cover (factory
default installation)



⑥ Power supply adapter (5V / 2A)

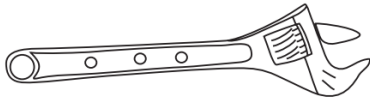


3. Installation method

(1) Water pipe installation

Preparation tools: Spanner, Hex Keys

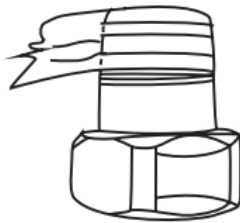
spanner



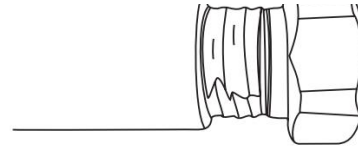
Hex Keys



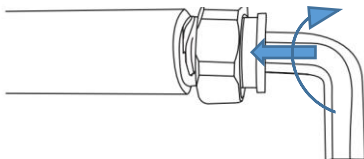
1. Wrap the water pipe connector with waterproof tape



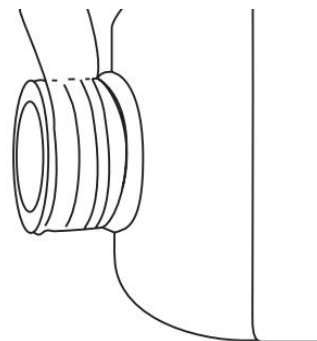
2. .Connect the water pipe connector to the main water supply line



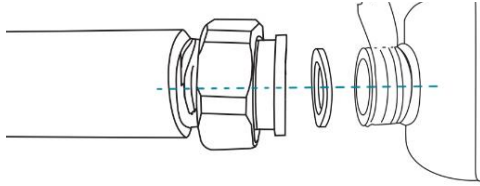
3. Tighten the water pipe connector with the Hex Keys



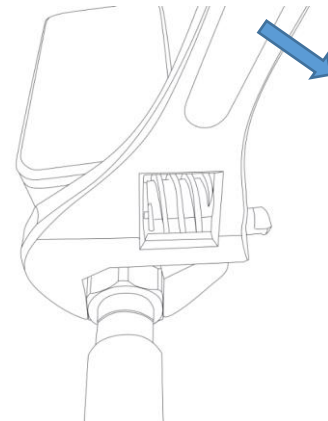
4. wrap water valve copper pipe with waterproof tape



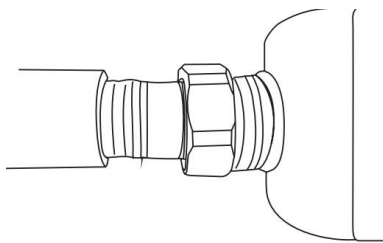
5. Put the silicone pad into the water pipe connector, and then dock the water valve copper pipe



6. Tighten the adapter nuts with the spanner



7. Single-side installation is completed

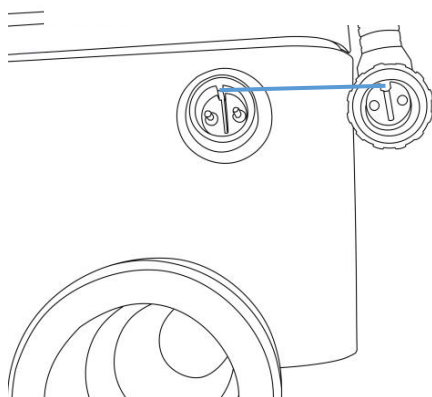


8. The water valve on the other side can be installed in the same way

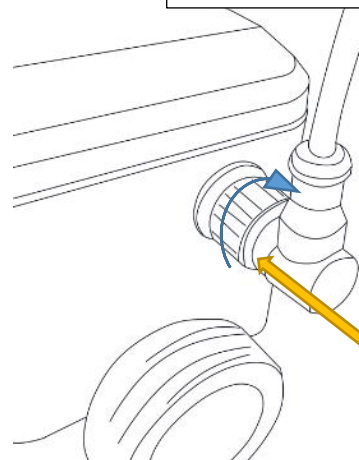
(2) Power installation

- ① Pay attention to the power concave-convex groove during connecting to the power
- ② Align the interface, press the power supply firmly and rotate the nut clockwise
- ③ Turn on the power supply, installation finished .

1. .Check the power supply interface slot



- 2.Align at the interface and press firmly
3. Turn the nut clockwise



4. Notes:

- (1) The lowest detection temperature of water temperature is -10°C. When the water temperature is lower than 0°C, the water valve cannot be shut on/off
- (2) When installing the water valve, be sure to wrap the waterproof tape to prevent water leakage
- (3) Suggested installation location: the indoor main water inlet

Spec of product

Device name: Wi-Fi smart water valve

Power supply: DC 5V / 2A

Maximum working current: 800 mA

Standby power consumption: 0.3W

Valve on / off time: 12 seconds

Pipe : DN20 3 / 4 inch

Range of water temperature detection: -10~65°C (14-149 °F)

Detection accuracy of water temperature: ± 0.5°C (0.9 °F)

Water pressure range: 0 ~ 200 PSI

Accuracy of water pressure reporting: ± 1 KPa

Reporting accuracy of water flow rate: 0.1gal

Wireless frequency: 2.412~2.483GHz

Wireless standard: IEEE 802.11/b/g/n

Bluetooth version: Bluetooth 5.0

Wireless distance: 45M

Screw pitch: 14 NPS

Waterproof grade: IPX 7

Dimensions: 195mm x 78mm x 102mm

Operating temperature: 1 ~ 60°C (34-140 °F)

Working Humidity: 1 ~ 95% RH

The indicator light corresponds to the device status

device status	Indicator status
Bluetooth mode / Smart Wi-Fi / AP compatible mode	The indicator light flashes once every 2 seconds
Water valve switch status	Water valve switch indicator flashes (green is on / red is off)
reset	Press the reset button for 6s, the reset key indicator light will flash slowly (the device enters the standby mode)

Tip: The power supply can be used by the power bank.

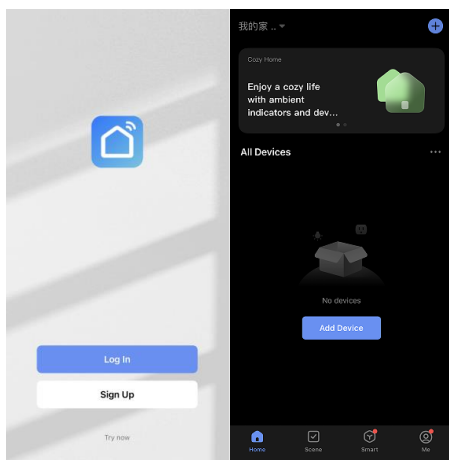
Reset indicator : when the device power on ,the default indicator is flashing blue slowly (pairing mode);

download APP

1. Android System: Download the "Smart Life" APP at GooglePlay;
IOS system: Download the "Smart Life" APP from the AppStore;



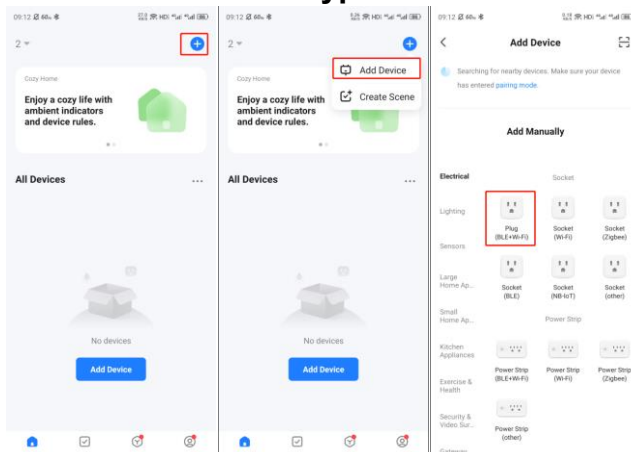
2. Run the APP, register, and log in to the account



Add equipment

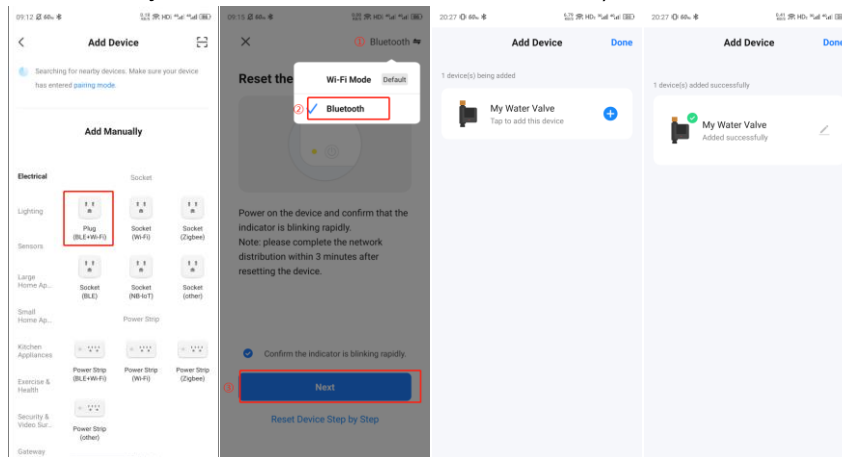
By default, the device is in pairing mode (slow flash); if the reset button is not on, press the reset button for 6 seconds and then add the device

1. Select the device type to add

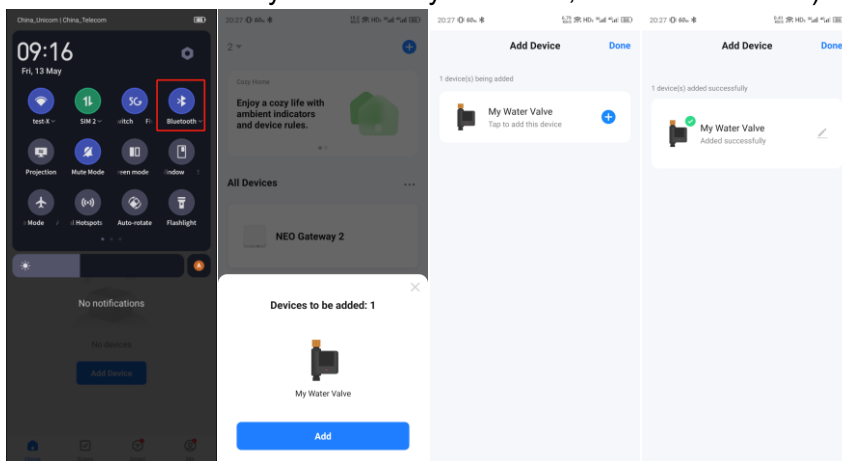


2. Bluetooth pairing(suggested)

(1) Option 1: Active Bluetooth in Mobile phone to add the device through Bluetooth mode (the standby mode can be added with Bluetooth)

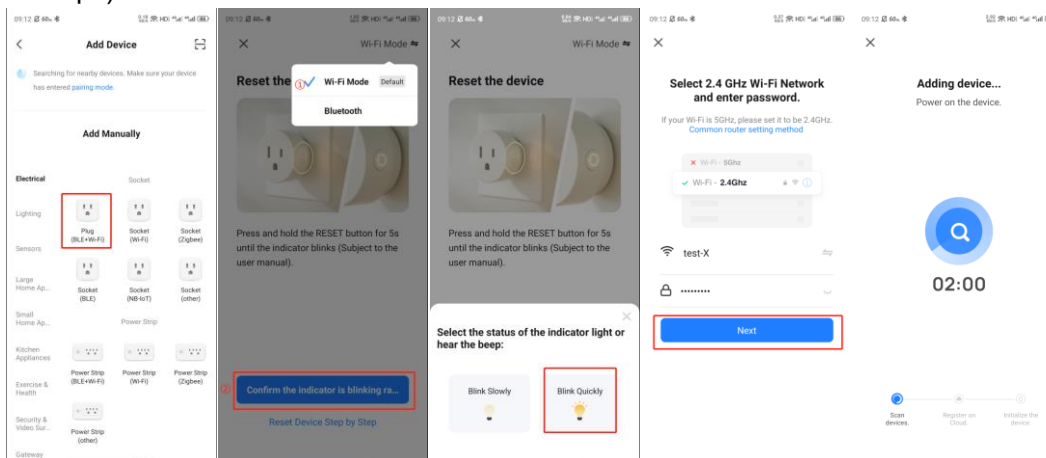


(2) Option 2 (After activating Bluetooth, enter the APP interface, the device will be automatically searched by Bluetooth, and then click Add)



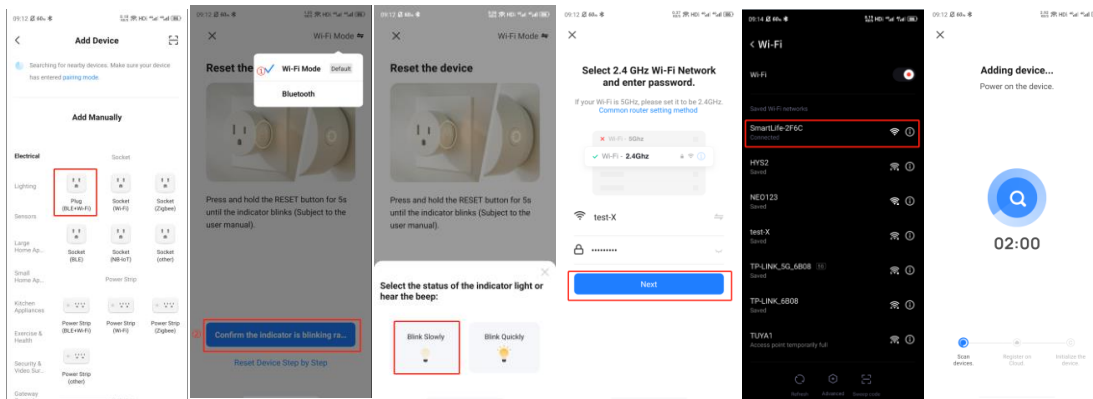
3. Smart Wi-Fi pairing

Press the reset button until the device flashes slowly (pairing mode) and add (follow the APP tips)



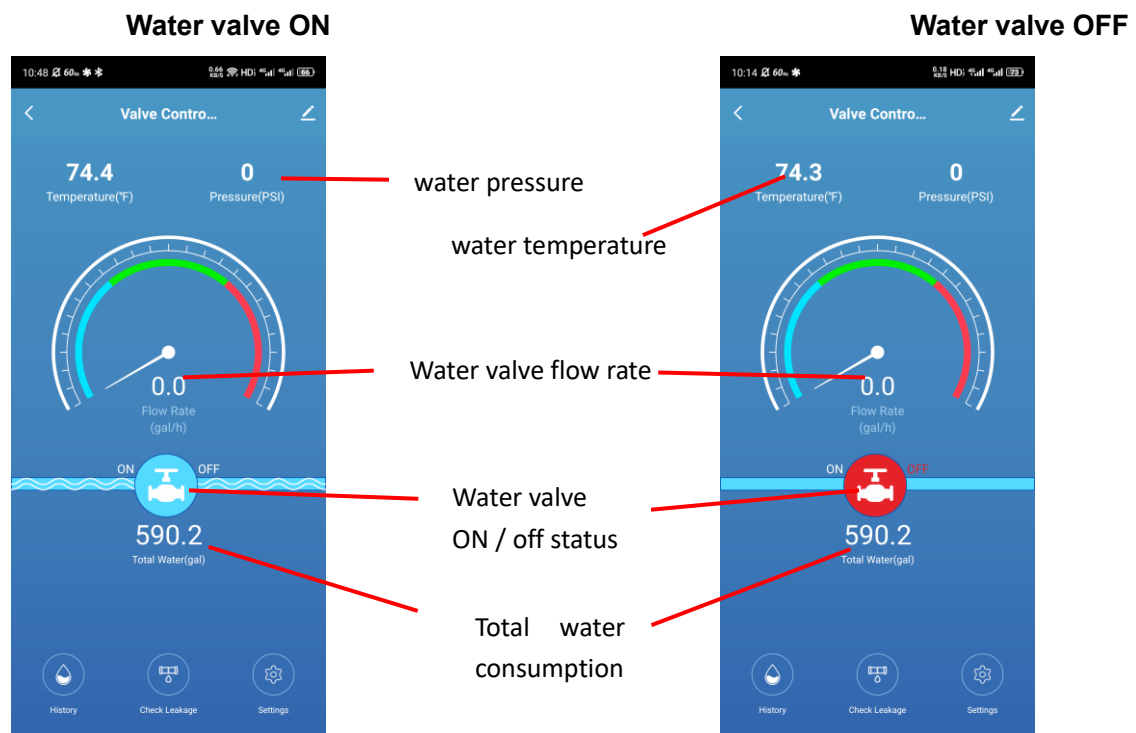
4. The AP compatible mode pairing

Press the reset key until the device flashes slowly (pairing mode) and add (follow the APP tips)

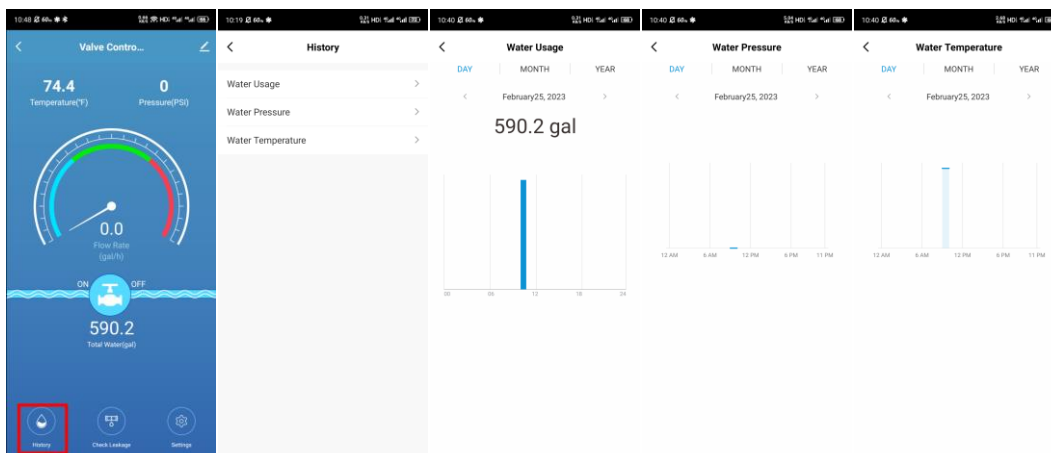


Main functions, working status and record Settings

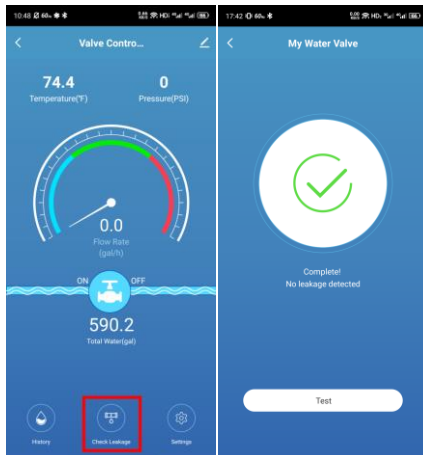
1. APP main interface



2. Historical record; (you can check the records of water consumption, water pressure and water temperature of day, month and year; the water consumption is reported once per hour)

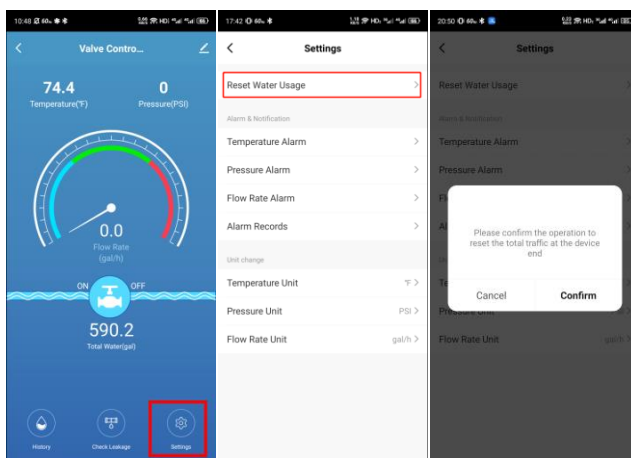


3. Water leakage self-inspection; (One key to check the leakage ,if detected the leakage ,it will be reported immediately)
; Water leakage detection can only be opened when the valve is opened without flow rate)

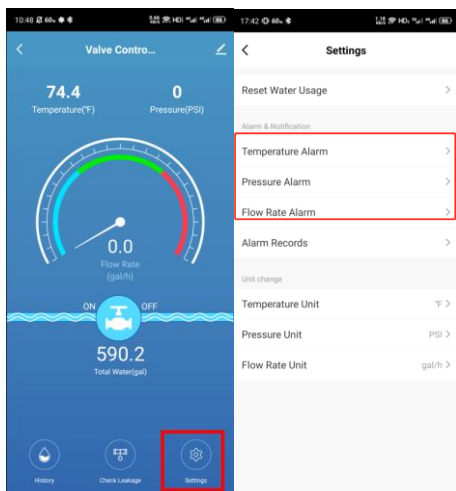


4. Alarm / display settings

(1) Water consumption reset switch; (clear the total water consumption)



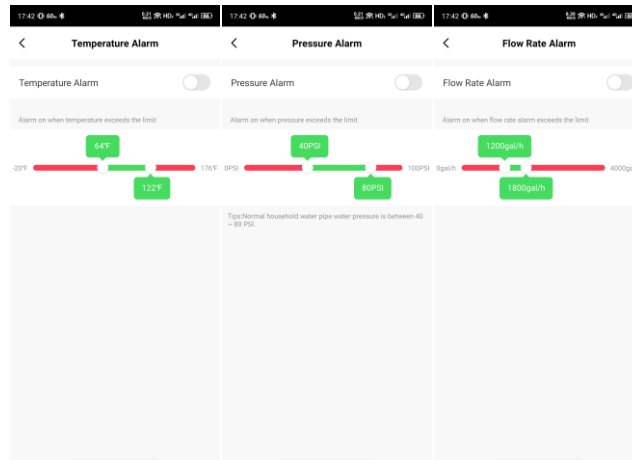
(2) Water temperature alarm, pressure alarm and flow rate alarm (The alarm switch can be turned on or off)



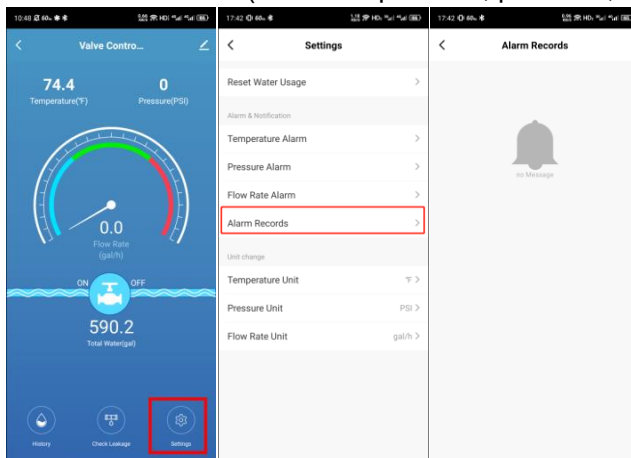
Temperature alarm

Water pressure alarm

Flow rate alarm

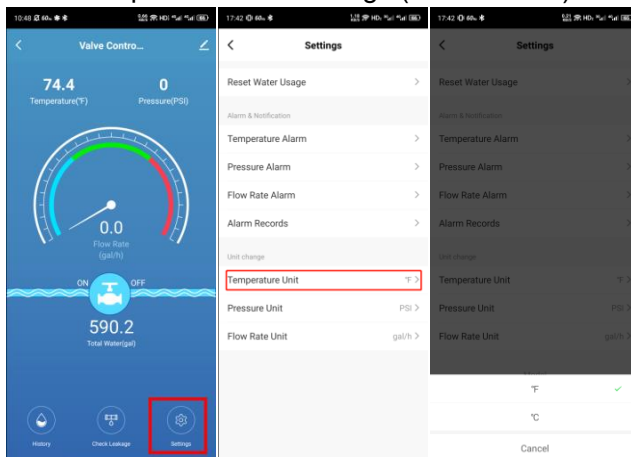


(3) Alarm record (water temperature, pressure, water consumption and water leakage alarm)

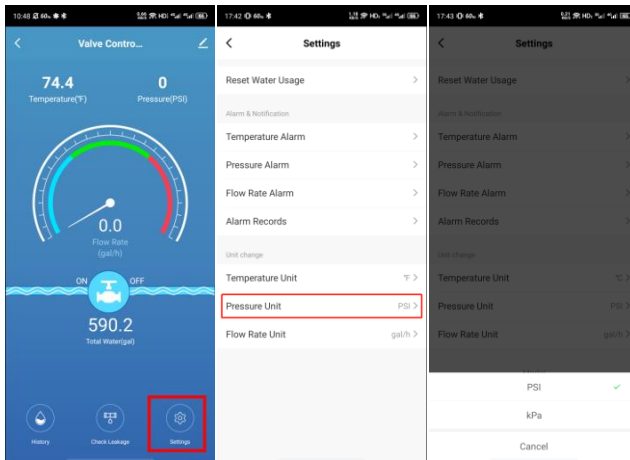


5, temperature, pressure, flow unit setting

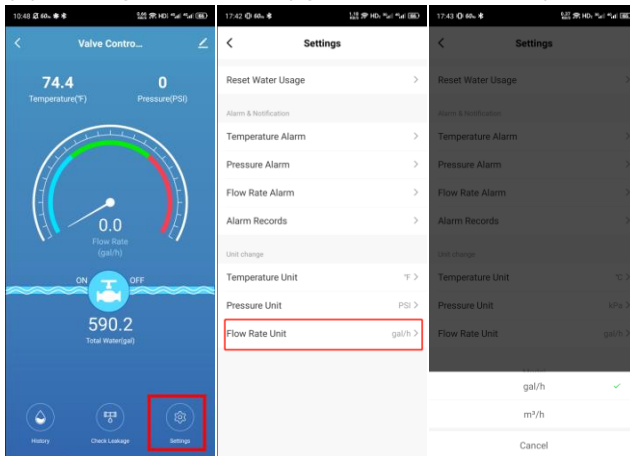
(1) Temperature unit settings ("°C" and "°F")



(2) Pressure unit setting ("PSI" and "kPa")



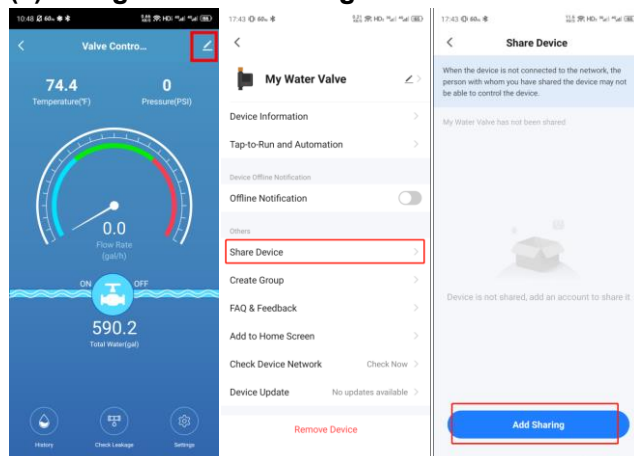
(3) Setting of flow unit ("gal / h" and "m³ / h")



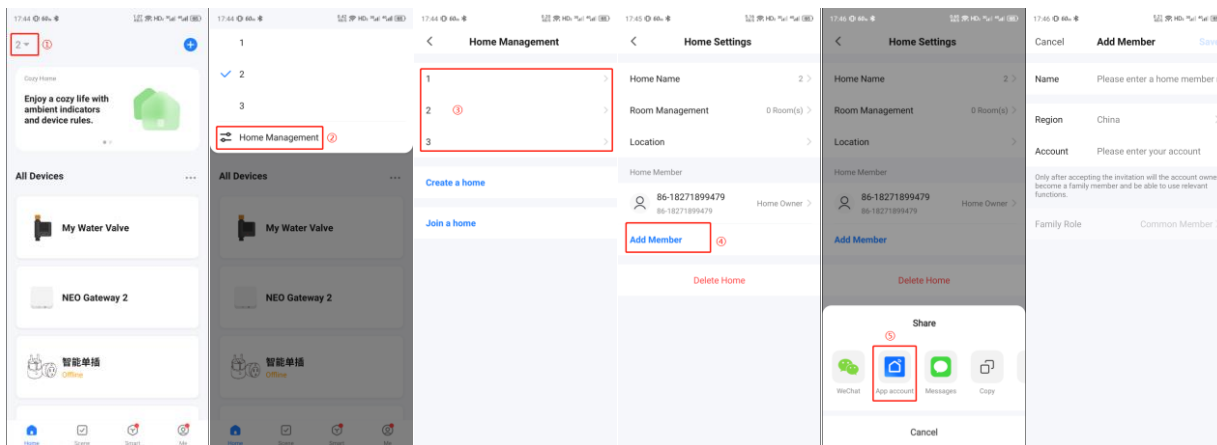
Other functions

1. Sharing device

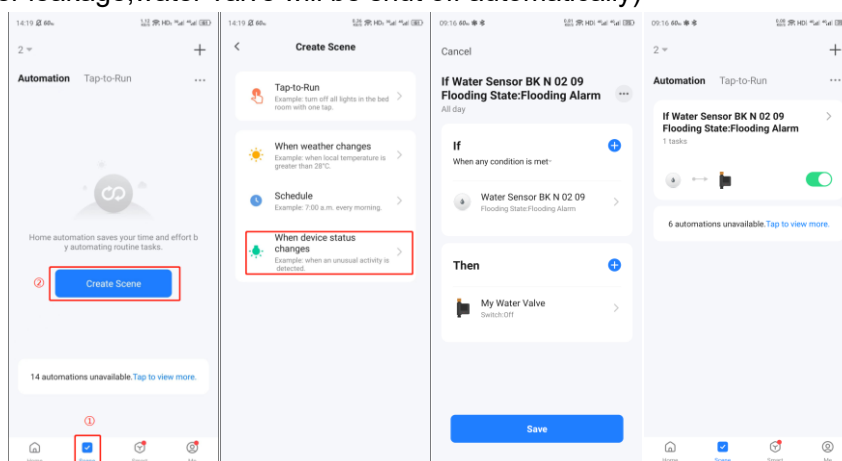
(1) Single device sharing



(2) Family group sharing

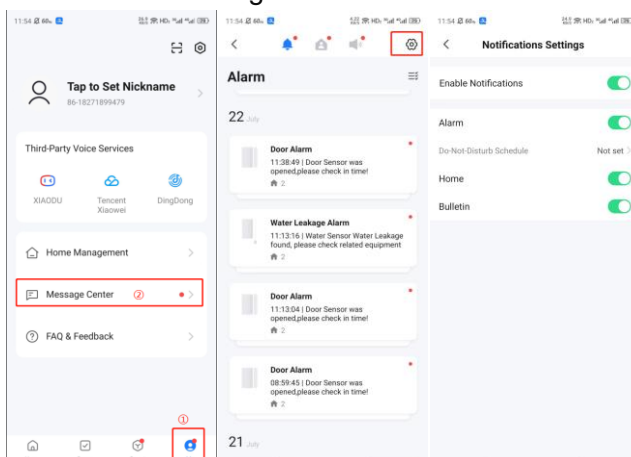


2. Product linkage (for example: linkage setting with water sensor,when the water sensor detects water leakage,water valve will be shut off automatically)



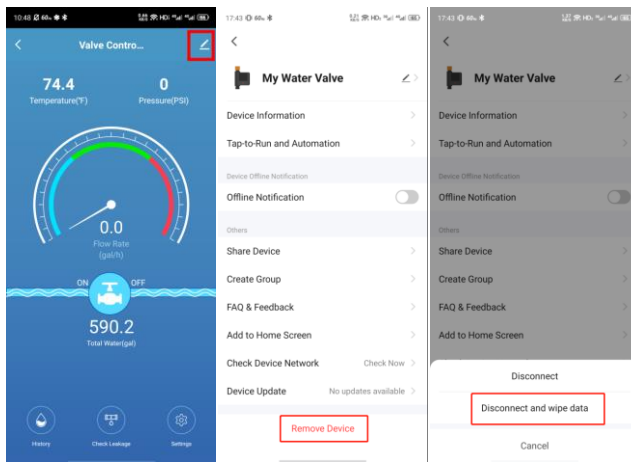
3. Push notification management

APP push notification:Turn off the switch, all devices in APP can not receive the push notification, but all alarm messages still can be checked in the message center;



4. Clear the records;

Remove Device from app ,Disconnect and wipe date



Make Your Home Smarter