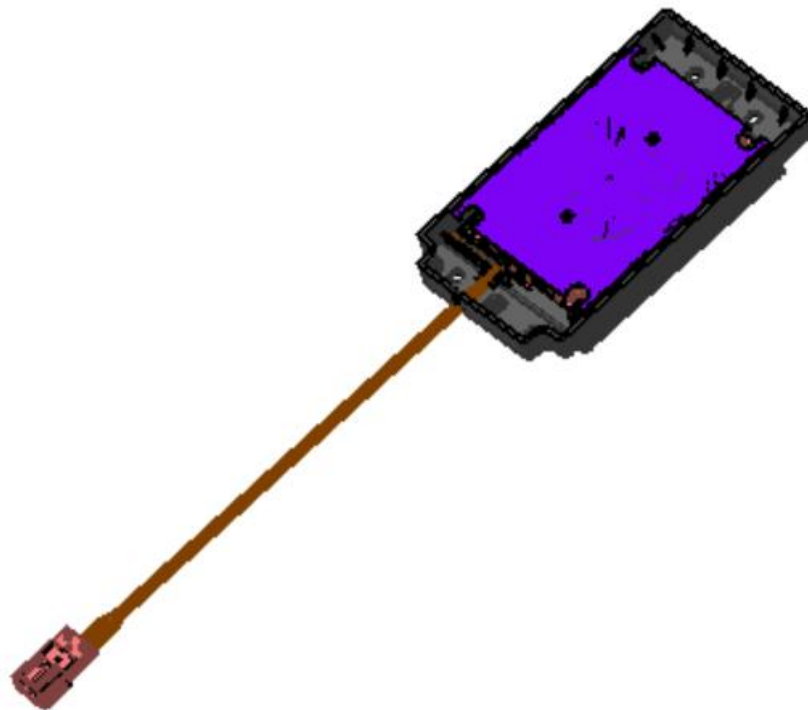




15WWCM Wireless Charger Product Manual



Jiangsu Sunway I-Auto Interconnect Tech Co., Ltd.



1、Product Overview

This automotive-grade wireless charging module adopts a domestic Jiefa chipset solution, delivering exceptional stability and reliability. Supports 15W fast charging compliant with Qi 1.3 standard.

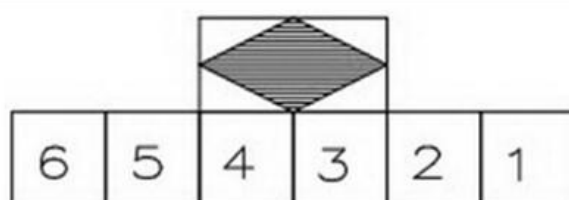
2、Technical Specifications

Parameter	Specification		
Product Name	Wireless Charger		
Customer Part No.	28465HC100/28465HC200		
Rated Voltage	13.5V		
Charging Power	Max. 15 W		
Charging frequency	100~205KHz		
Coil Configuration	3-coil system		
Charging Efficiency	$\geq 70\%$		
Product Dimensions	Length=144mm	Width=79.5mm	Height=18.45mm
Product Weight	230g		
Connector Pins	6-pin		

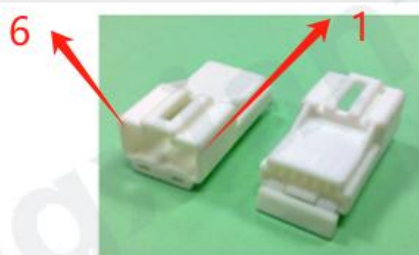
3、Pinout Definition

Connector Model: 7283-8663 (YAZAKI)

2D图：



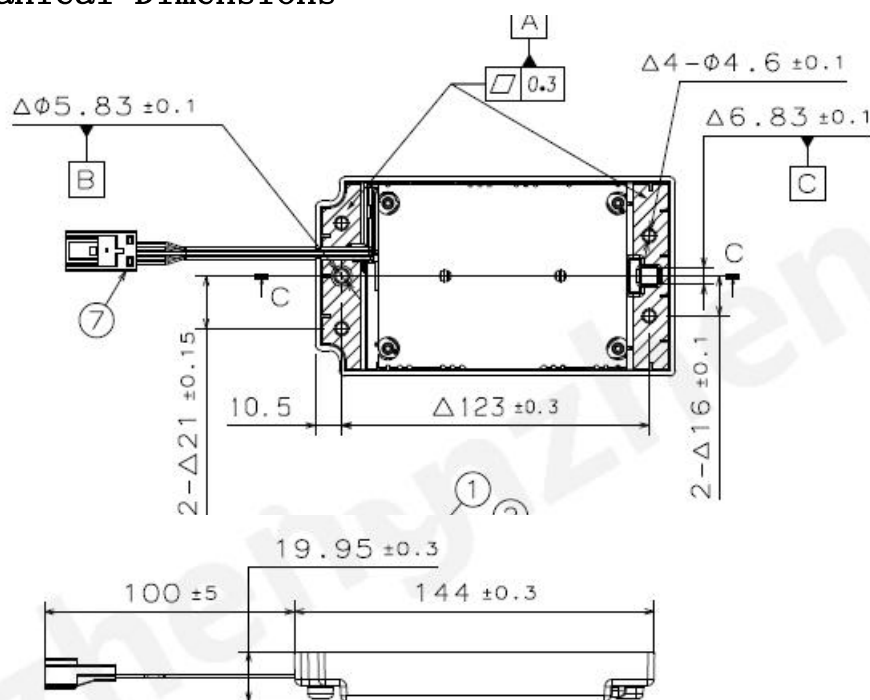
3D图：





PIN	Signal Nam	Function Description
1	GND	Power ground
2	ACC	Ignition-switched power input
3	CAN-H	CAN-H
4	CAN-L	CAN-L
5	供应商自定义使用	Supplier customizes the use
6	供应商自定义使用	Supplier customizes the use

4、Mechanical Dimensions





5、 Safety & Usage Guidelines

- 1、 Ensure no metallic objects (coins, keys, etc.) are present on the charging surface before use.
- 2、 Verify the non-slip rubber pad is properly installed. Removal is strictly prohibited, as it provides critical heat dissipation and device protection.
- 3、 ****Never place**** metallic objects between the device and charger during operation.
- 4、 For optimal performance, use when vehicle engine is running or ensure sufficient battery voltage.
- 5、 ****Prohibit**** placing liquid containers on the charger. Liquid ingress may cause permanent damage.
- 6、 ****Only charge Qi-certified devices.**** Non-compliant receivers may cause malfunction and void warranty.

FCC Statement

This equipment has been tested and found to comply with the limits for a Class B digital device, pursuant to part 15 of the FCC Rules. These limits are designed to provide reasonable protection against harmful interference in a residential installation. This equipment generates, uses and can radiate radio frequency energy and, if not installed and used in accordance with the instructions, may cause harmful interference to radio communications. However, there is no guarantee that interference will not occur in a particular installation. If this equipment does cause harmful interference to radio or television reception, which can be determined by turning the equipment off and on, the user is encouraged to try to correct the interference by one or more of the following measures:

- Reorient or relocate the receiving antenna.
- Increase the separation between the equipment and receiver.
- Connect the equipment into an outlet on a circuit different from that to which the receiver is connected.
- Consult the dealer or an experienced radio/TV technician for help.

Caution: Any changes or modifications to this device not explicitly approved by manufacturer could void your authority to operate this equipment.

This device complies with part 15 of the FCC Rules. Operation is subject to the following two conditions: (1) This device may not cause harmful interference, and (2) this device must accept any interference received, including interference that may cause undesired operation.

RF Exposure Information

This equipment complies with FCC radiation exposure limits set forth for an uncontrolled environment.