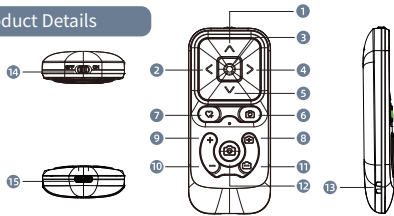


# Wireless Remote Control User's Manual

## Product Details



- 1: Up button: Click to swipe up the screen
- 2: Left button: Click on the screen and swipe left
- 3: Middle button: Click pause/play
- 4: Right button: Click on the screen and swipe right
- 5: Press button: Click on the screen to scroll down
- 6: Flip button: Click on the system camera to switch between front and rear cameras
- 7: Like button: click like, long press to like continuously;
- 8: Plus button: Click on the camera focal length to increase;
- 9: Click to increase the volume;
- 10: Click to reduce volume;
- 11: Minus button: Click on the camera focal length to decrease;
- 12: Photo button: Click to take a photo
- 13: Hanging rope hole
- 14: Power switch key
- 15: TYPE charging port

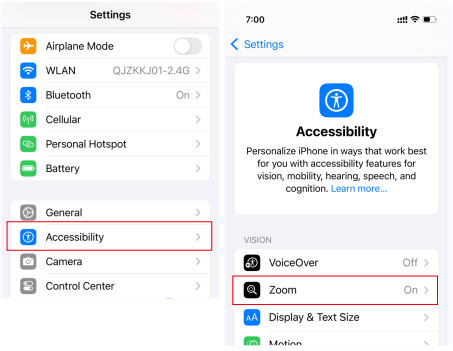
## zoom mode

Minus button: (iPhone, Samsung) Click on the camera focal length to decrease, double-click on the infinite zoom mode to decrease

Plus button: (iPhone, Samsung) Click on camera focal length to increase, double-click on infinite zoom mode to increase

## IOS system precautions

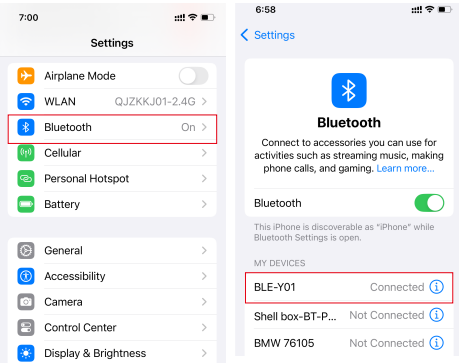
1: Open your phone's "Settings" - "Accessibility" - "Turn on Zoom". After enabling the zoom function, the screen will become larger. Tap the screen twice with three fingers to restore zoom;



## System Bluetooth connection steps

1: Turn the top switch of the remote control (ON/OFF), and the indicator light on the remote control will flash blue;

Open the "Settings" - "Bluetooth" on your phone, search for "BLE-Y01" and click on the device name to pair. When "Connected" is displayed, the indicator light stops flashing and the Bluetooth connection is complete



## Product Introduction

Product model: BLE-Y01

Product Name: Multi functional Remote Control

Product color: Black, White Charging voltage: 5V/2A

Battery capacity: 200mAH Charging time: about one hour

Product weight: 30g Standby time: 90 days

## Summary of One Year Limited Warranty

Our company guarantees that the accompanying hardware products have no defects in materials and craftsmanship within one year from the date of original retail purchase, and can accept after-sales issues. Our company does not guarantee normal wear and tear, nor does it guarantee damage caused by accidents or abuse. To obtain services, you can visit our retail stores or authorized service providers to repair and replace your product. Your warranty rights are additional to those provided by local consumer laws. When you make a claim under this warranty policy, you may need to provide detailed purchase information.

RoHS   
MADE IN CHINA



## FCC Warning

This device complies with part 15 of the FCC Rules. Operation is subject to the following two conditions: (1) This device may not cause harmful interference, and (2) this device must accept any interference received, including interference that may cause undesired operation.

Any Changes or modifications not expressly approved by the party responsible for compliance could void the user's authority to operate the equipment.

**Note:** This equipment has been tested and found to comply with the limits for a Class B digital device, pursuant to part 15 of the FCC Rules. These limits are designed to provide reasonable protection against harmful interference in a residential installation. This equipment generates uses and can radiate radio frequency energy and, if not installed and used in accordance with the instructions, may cause harmful interference to radio communications. However, there is no guarantee that interference will not occur in a particular installation. If this equipment does cause harmful interference to radio or television reception, which can be determined by turning the equipment off and on, the user is encouraged to try to correct the interference by one or more of the following measures:

- Reorient or relocate the receiving antenna.
- Increase the separation between the equipment and receiver.
- Connect the equipment into an outlet on a circuit different from that to which the receiver is connected.
- Consult the dealer or an experienced radio/TV technician for help.

The device has been evaluated to meet general RF exposure requirement. The device can be used in portable exposure condition without restriction.