

YS-016 Dial Combination Padlock

User Manual

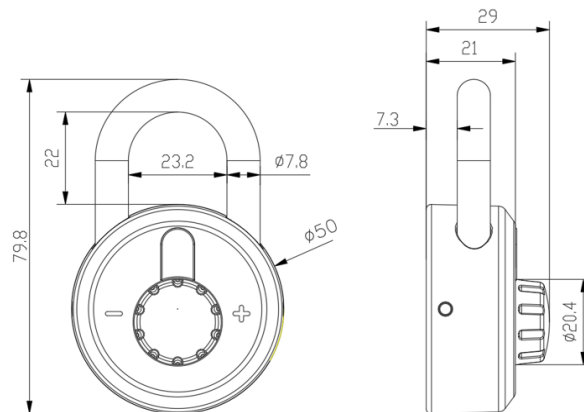
DIN 50×21mm, 50-type Dial Combination Padlock

- Adopts a simple-to-operate dial knob for password input.
- Visualized design for free ascending/descending password input.
- Powered by 2×CR2032 button batteries for long standby.
- Features low power consumption and long service life.

Technical Parameters

Working Voltage	2×CR2032 button batteries, approx. DC6V
Power Consumption	Standby <10 μ A
Display Method	1-digit LED digital tube display
Installation Method	Shackle-hanging installation
Password Range	0-9 (10 digits available for setting)
Password Length	3 to 6 digits (3 digits minimum)
Password Mode	Virtual password
Input Method	Password input via arbitrary knob rotation
Bluetooth Mode	BLE4.0
Bluetooth Distance	<1M within visual range
Protection Level	IP66
Operating Environment	Temperature: 0~+60℃ (indoor use); Humidity: 25~85%RH

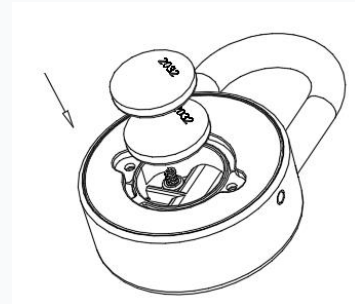
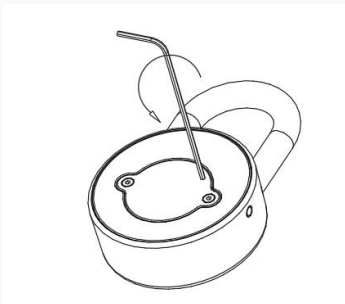
Product Dimensions



Operation Instructions

Battery Installation

Use the included hex wrench to remove the 2 fixing screws of the battery cover. Insert 2×CR2032 batteries following the positive/negative polarity (negative pole downward), then secure the battery cover.



Bind the Lock

1. Open the mobile APP, select "Add Lock", choose the corresponding lock type, and follow the prompts to operate the lock. Tap "Next".
2. Select "Bind Lock", enter the lock name and administrator password in the pop-up dialog, then tap "Bind Lock". Complete binding after the success prompt appears.

Unbind the Lock

1. Open the APP, tap the lock name in the list to enter the main interface.
2. Go to "System Management", select "Restore Factory Settings", confirm the prompt, and complete unbinding after the connection success prompt appears.

Password Setting

1. Open the APP, tap the lock name in the list to enter the main interface.
2. Go to "Modify Password", enter the old password and new password as prompted, then confirm by tapping "Modify Password".

Password Unlocking

1. Rotate the knob in any direction until the digital tube shows a number. Continue rotating until the first password digit appears and stays for 2 seconds (until the digit flashes).
2. Rotate the knob again until the second password digit appears and stays for 2 seconds (until it flashes).
3. Repeat to input the third password digit, which stays for 2 seconds (until it flashes).
4. Once all 3 digits are entered, the top light of the digital tube will flash. Pull down the lock body to unlock.

APP Unlocking

1. Enable phone Bluetooth and open the APP.
2. Follow the in-APP guide to establish a Bluetooth connection between the padlock and phone.
3. Slide the unlock button. When the top light of the digital tube flashes, pull down the lock body to unlock.

Locking the Padlock

Align the shackle with the shackle hole and press down the padlock. The top light of the digital tube will flash, indicating the padlock is automatically locked (pulling the lock body cannot unlock it now).

Daily Maintenance

Regular Inspection

Check the battery level via the APP regularly. Replace batteries immediately if low to ensure normal operation.

Cleaning

Wipe the padlock surface with a clean, soft cloth to remove dust and dirt, preventing them from entering the lock body and affecting electronic components or mechanical parts.

Waterproof & Moisture-proof

Avoid exposing the padlock to humid environments for extended periods. If rained on or in a humid area, dry it promptly to prevent water damage to electronic components.

Avoid Violent Operation

Do not hit, drop, or over-twist the padlock to prevent damage to internal structures and electronic components.

Notes

1. The initial digit is "1" when waking up the lock; passwords can be input in any direction.
2. Replace batteries promptly when low to avoid operational issues.
3. To use the APP, download it from the app store and bind the padlock before accessing all functions.
4. The password recognition time is 2 seconds. Wait briefly when inputting virtual passwords.

COMPANY NAME: Xuzhou Bamenjin Electronic Technology Co., Ltd.

ADDRESS: West Side, 4th Floor, Building 2, Intelligent Manufacturing Industrial Park, Qingshanquan Town, Jiawang District, Xuzhou City, Jiangsu Province.

FCC Warning:

This equipment has been tested and found to comply with the limits for a Class B digital device, pursuant to part 15 of the FCC Rules. These limits are designed to provide reasonable protection against harmful interference in a residential installation. This equipment generates, uses and can radiate radio frequency energy and, if not installed and used in accordance with the instructions, may cause harmful interference to radio communications. However, there is no guarantee that interference will not occur in a particular installation. If this equipment does cause harmful interference to radio or television reception, which can be determined by turning the equipment off and on, the user is encouraged to try to correct the interference by one or more of the following measures:

- Reorient or relocate the receiving antenna.
- Increase the separation between the equipment and receiver.
- Connect the equipment into an outlet on a circuit different from that to which the receiver is connected.
- Consult the dealer or an experienced radio/TV technician for help.

Caution: Any changes or modifications to this device not explicitly approved by manufacturer could void your authority to operate this equipment.

This device complies with part 15 of the FCC Rules. Operation is subject to the following two conditions:

(1) This device may not cause harmful interference, and (2) this device must accept any interference received, including interference that may cause undesired operation.

This equipment complies with FCC radiation exposure limits set forth for an uncontrolled environment. This equipment should be installed and operated with minimum distance 0cm between the radiator and your body.