

# 产品规格承认书

## SPECIFICATIONS

客户:

CUSTOMER: \_\_\_\_\_

产品名称:

DESCRIPTION: \_\_\_\_\_ Chip antenna

客户型号:

CUSTOMER PART NO: \_\_\_\_\_

产品型号:

OUR MODEL NO: \_\_\_\_\_ PBX2012MA01

日期:

DATE: \_\_\_\_\_

确认签字, 盖章后请返回承认书一份

PLEASE RETURN TO US ONE COPY OF “SPECIFICATION FOR  
APPROVAL” WITH YOUR APPROVED SIGNATURES

|         |  |        |  |      |  |
|---------|--|--------|--|------|--|
| approve |  | review |  | make |  |
|---------|--|--------|--|------|--|

|                             |  |  |  |
|-----------------------------|--|--|--|
| 客户确认签章 (APPROVED SIGNATURE) |  |  |  |
|                             |  |  |  |

# PBX2012MA01 Specification

Operating Temp. : -40°C~+85°C

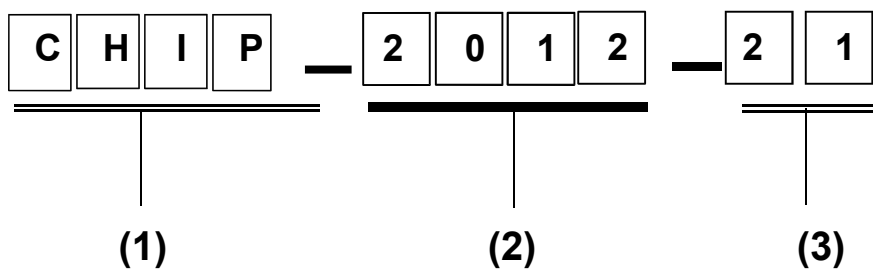
## 1. FEATURES:

- Light weight, compact
- Wide bandwidth, low cost
- Built-in antenna with high gain

## 2. APPLICATIONS:

- Bluetooth, Wireless LAN, Mobile TV
- Home RF System, etc

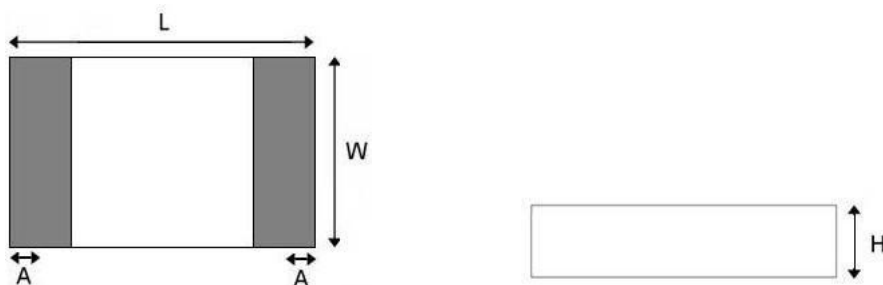
## 3. PRODUCT IDENTIFICATION



(1) Product type: Multilayer chip Antenna

(2) External Dimensions (L×W) (mm): 2.0\*1.2

## 4. SHAPE AND DIMENSIONS:



### SHAPE AND DIMENSIONS

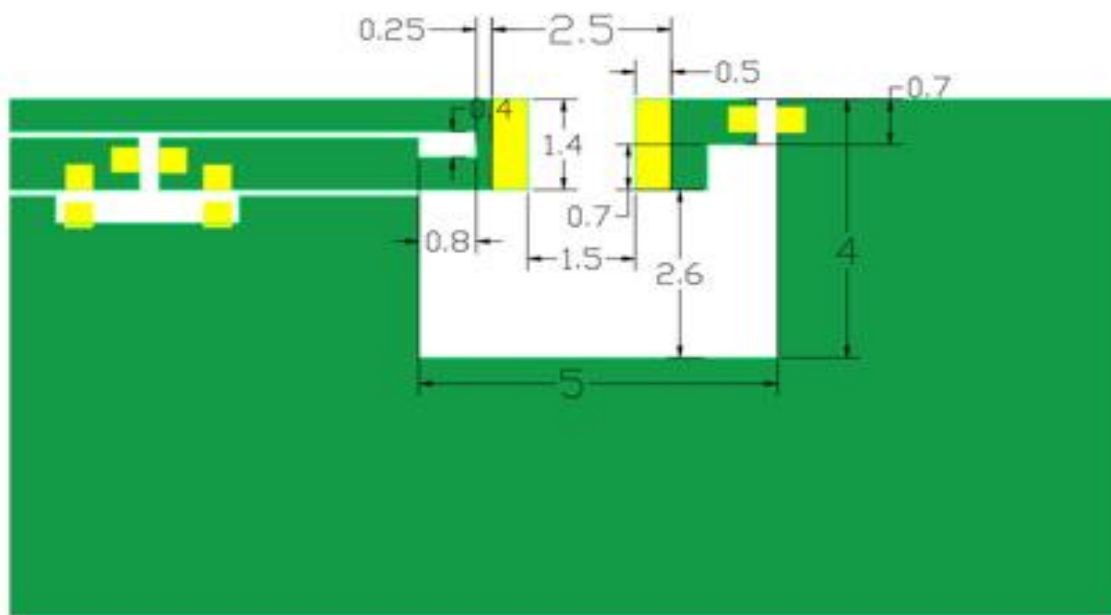
| L       | W       | H        | A       |
|---------|---------|----------|---------|
| 2.0±0.2 | 1.2±0.2 | 0.55±0.1 | 0.4±0.1 |

|   |                 |  |      |                 |
|---|-----------------|--|------|-----------------|
| UNLESS OTHER SPECIFIED TOLERANCES ON:<br>X=±                    X.X=±                    X.XX=±<br>A N G L E S = ±                    H O L E D I A = ± |                 |  |      |                 |
| SCALE: N/A  | UNIT: mm        | THIS DRAWINGS AND SPECIFICATIONS ARE THE PROPERTY OF PBXY TECHNOLOGY Limited AND SHALL NOT BE REPRODUCED OR USED AS THE BASIS FOR THE MANUFACTURE OR SALE OF APPARATUS OR DEVICES WITHOUT PERMISSION |      |                 |
| DRAWN BY : Sera   | CHECKED BY: XD  |  |      |                 |
| DESIGNED BY: Sera   | APPROVED BY: XD |  |      |                 |
| TITLE: CHIP2450-21 Specification  |                 | DOCUMENT NO.   | 2012 | SPEC REV.<br>P1 |

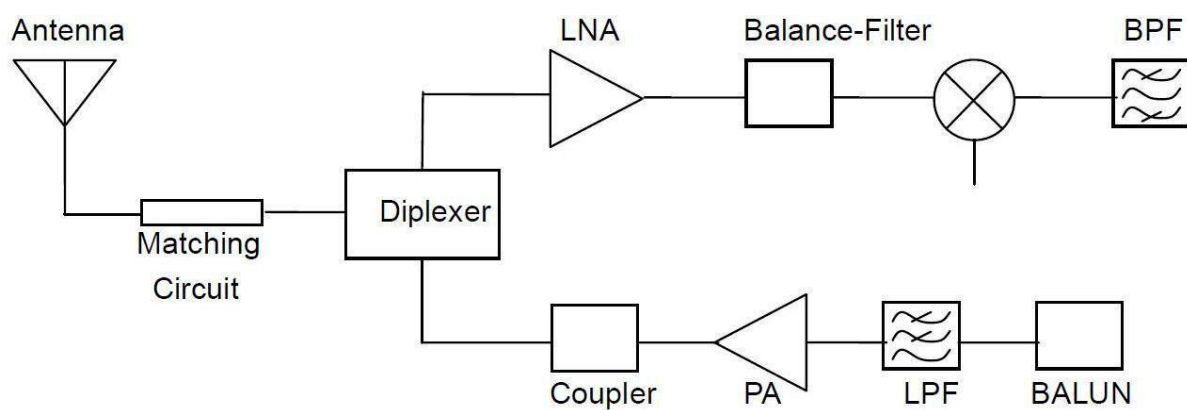
## TERMINAL-CONFIGURATION



## EVALUATION BOARD



## APPLICATION GUIDE



UNLESS OTHER SPECIFIED TOLERANCES ON:

$X = \pm$        $X.X = \pm$        $X.XX =$   
**ANGLES**  $= \pm$       **HOLEDIA**  $= \pm$

SCALE: N/A

UNIT: mm

DRAWN BY : Sera

CHECKED BY: XD

DESIGNED BY: Sera

APPROVED BY: XD

THIS DRAWINGS AND SPECIFICATIONS ARE THE PROPERTY OF PBXY TECHNOLOGY Limited AND SHALL NOT BE REPRODUCED OR USED AS THE BASIS FOR THE MANUFACTURE OR SALE OF APPARATUS OR DEVICES WITHOUT PERMISSION

TITLE: CHIP2450-21 Specification

DOCUMENT  
NO.

2012

SPEC REV.  
P1

## 5. SPECIFICATIONS:

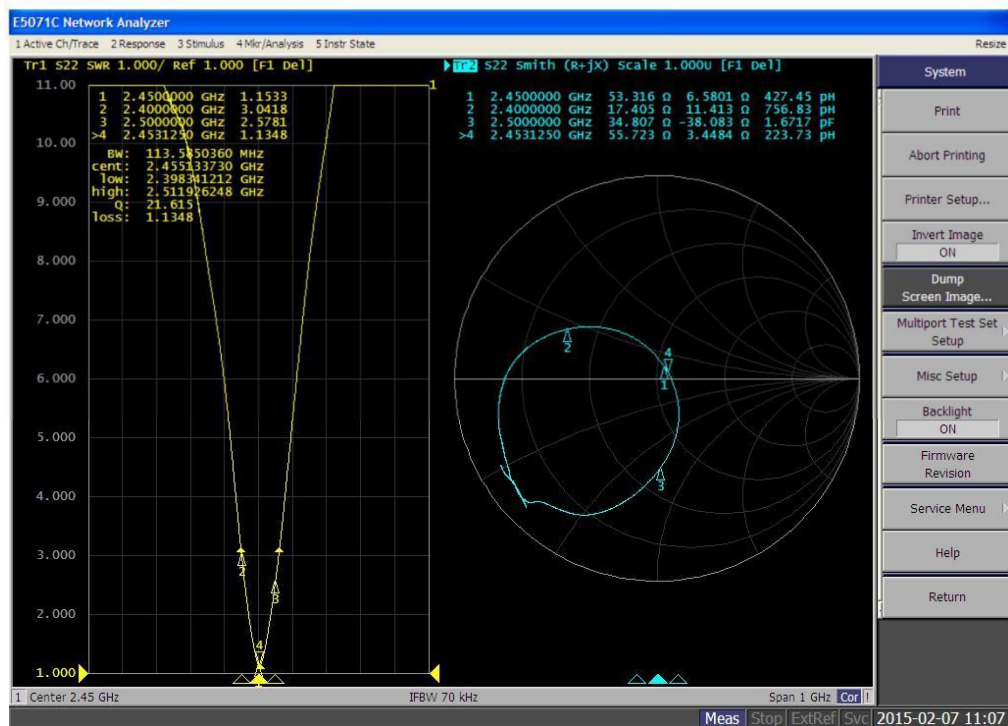
| ITEM             | SPECIFICATION    |
|------------------|------------------|
| Frequency Band   | 2400MHz~2483MHz  |
| VSWR             | Less than 3      |
| Polarization     | Linear           |
| *Peak Gain       | 2.48 dBi Typ.    |
| *Peak Efficiency | 72.6% Typ.       |
| Impedance        | 50 $\Omega$ Typ. |

\* Test condition: Test board size 98\*65 mm

Matching circuit: Pi matching circuit will be required

## 6. Electrical Characteristics :

### VSWR



| Mark | Frequency | VSWR |
|------|-----------|------|
| 1    | 2400 MHz  | 3.04 |
| 2    | 2450 MHz  | 1.15 |
| 3    | 2500 MHz  | 2.57 |

UNLESS OTHER SPECIFIED TOLERANCES ON:

$X = \pm$        $X.X = \pm$        $X.XX =$   
 ANGLES  $= \pm$       HOLEDIA  $= \pm$

SCALE: N/A

UNIT: mm

DRAWN BY : Sera

CHECKED BY: XD

DESIGNED BY: Sera

APPROVED BY: XD

THIS DRAWINGS AND SPECIFICATIONS ARE THE PROPERTY OF PBXY TECHNOLOGY Limited AND SHALL NOT BE REPRODUCED OR USED AS THE BASIS FOR THE MANUFACTURE OR SALE OF APPARATUS OR DEVICES WITHOUT PERMISSION

TITLE: CHIP2450-21 Specification

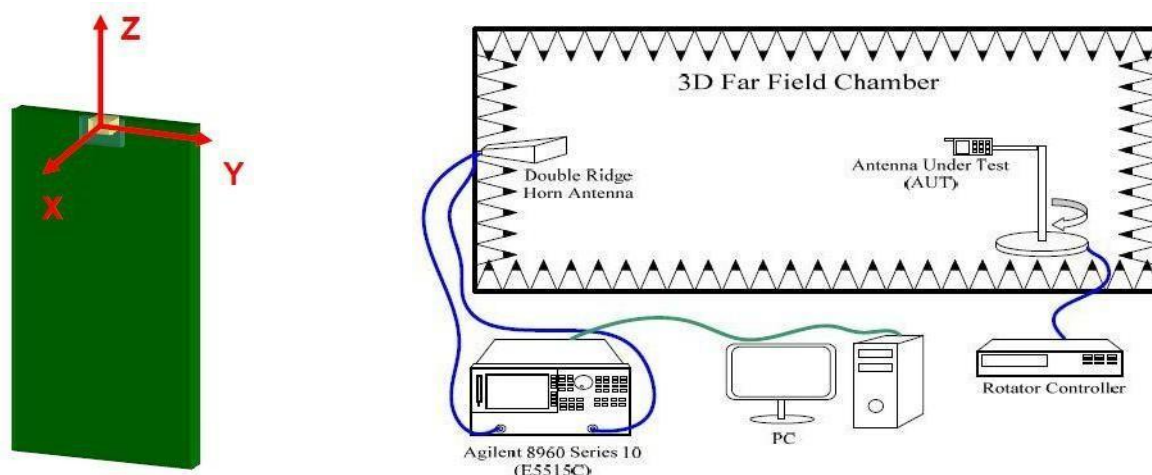
DOCUMENT NO.

2012

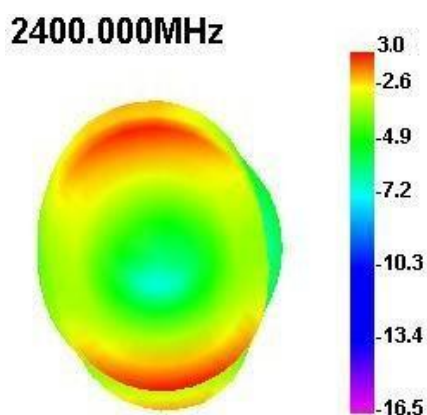
SPEC REV.  
P1

## Radiation Pattern

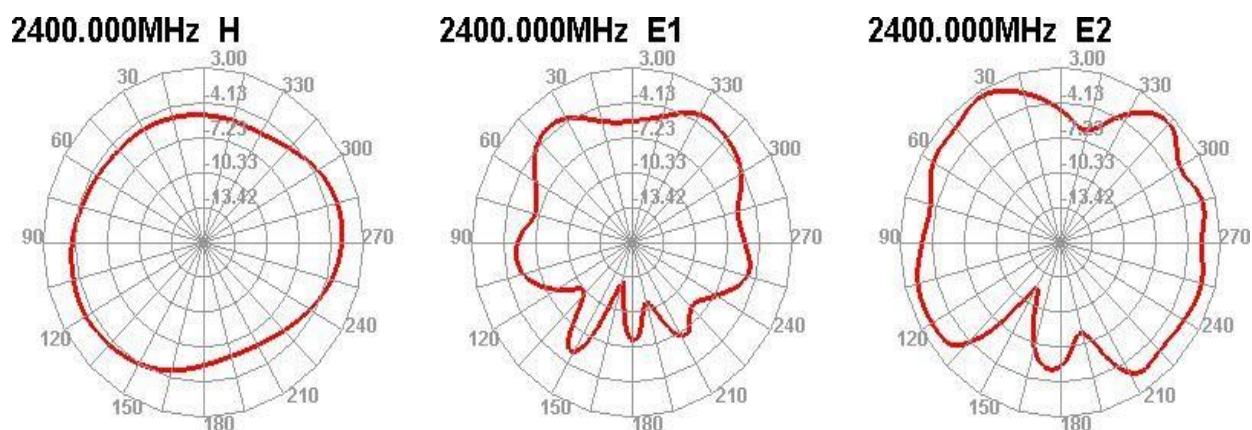
The Gain pattern is measured in INPAQ's FAR-field chamber. DUT is placed on the table of rotator, a standard horn antenna and Vector Network Analyzer is used to collect data.



### © 3D Gain Pattern (2400 MHz)



### © 2D Gain Pattern (2400 MHz)



UNLESS OTHER SPECIFIED TOLERANCES ON:

X=±      X.X=±      X.XX=±  
 ANGLES=±      HOLEDIA=±

SCALE: N/A

UNIT: mm

DRAWN BY: Sera

CHECKED BY: XD

DESIGNED BY: Sera

APPROVED BY: XD

DOCUMENT  
NO.

2012

SPEC REV.  
P1

TITLE: CHIP2450-21 Specification