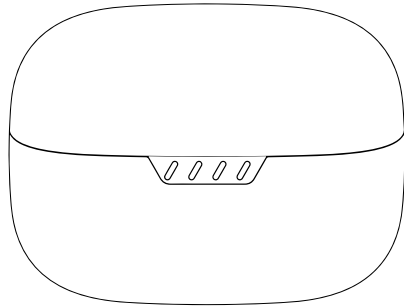


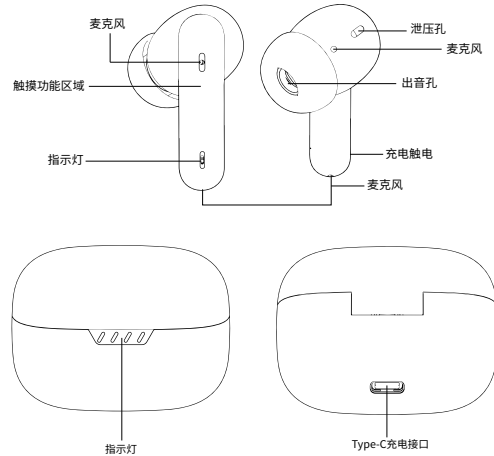
无线蓝牙耳机说明书

产品型号:ANC-WT01



ANC-WT01

功能操作示意图

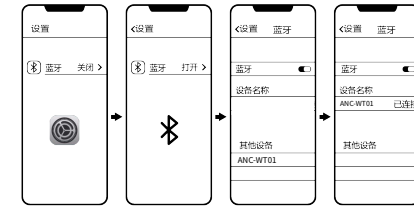


耳机功能操作说明

1. 开机:充电盒开盖2~3秒耳机自动开机左右配对
2. 关机: L/R 耳机放入充电盒, 充电盒关盖, 自动关机断连
3. 接听/挂断: L/R 来电单击功能键
4. 拒接来电 : L/R 长按多功能键2S
5. 暂停/播放: L/R 单击功能键操作播放/暂停
6. 上一曲 : L/双击功能键上一曲
7. 下一曲 : R/双击功能键下一曲
8. 音量加 : R 三击功能键音量加
9. 音量减 : L 三击功能键音量减
10. 语音助手: L 四击进入语音助手
11. 游戏/音乐模式 : R 四击功能键切换
12. 降噪模式 :
13. 连接手机: 蓝牙详情页搜索蓝牙名称连接 ANC-WT01
14. 断开连接: 耳机放入充电盒, 可自动断开连接

耳机连接配对操作

开盖耳机自动开机,出现红绿灯交替闪烁, 开始进行设备搜索。
如下图所示



充电仓状态指示

1. 充电盒白灯快闪表示充电盒电量低, 需要充电。
2. 充电盒有四个指示灯, 充电盒充电时白灯闪烁, 每充满一格指示灯常亮, 下一个指示灯闪烁, 以此类推至充电盒充满电四个白灯常亮。
3. 充电盒给耳机充电的时候, 耳机亮红灯, 充电盒白灯常亮。
4. 耳机低电的时候提示 (low battery) 表示低电提示。

产品参数

频响范围	20Hz-20KHz	
阻抗	32Ω	
灵敏度	105±3db 1KHz	
蓝牙接收距离	≥10米(标准环境下)	
蓝牙版本	Bluetooth 5.4	
支持协议	HSP/HFP/ADP/SBC/ ACC/ AVROP	
传输频率	2402MHz-2480MHz	
耳机充电时间	约30分钟(耳机), 约2小时(充电盒)	
播放时间	5-6小时(50%音量)	
通话时间	4-5小时(50%音量)	
续航时间	在蓝牙耳机与手机开启连接状态下通话时长:约4-5小时 (双耳通话)	
充电电压/电流	耳机额定输入:5V==120mA	充电盒额定输入: 5V==300mA
产品工作温度	-10-45℃	
产品存储温度	-10-45℃	

产品安全信息

在使用本产品前请阅读所有的指示和警告, 不规范使用将会给产品或人身安全带来损害。

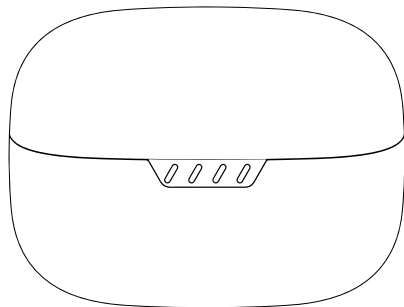
1. 产品内含电池, 请勿将本产品暴露在强日照或暖炉等过热环境中。请勿将本产品储存在高温, 强光及强磁场环境下。
2. 产品不可放置在火源附近等恶劣环境中, 禁止敲击、投掷、践踏、挤压或投入火中, 若出现鼓胀, 请勿使用。
3. 产品使用环境温度:-10-50℃。
4. 请勿违反产品说明书不恰当使用, 造成产品损坏或危及人身安全财产安全, 后果自行承担。
5. 非专业人员严禁拆解本产品, 否则可能会导致起火, 甚至彻底损坏本产品。
6. 请勿使用超出本产品输出电流负载(用电器), 超出负载会自动停止工作。
7. 请定期用干净的棉布对耳机充电触点进行清洁, 以避免因长期不清洁导致耳机出现无法充电或开机的情况。
8. 请勿将本产品置于水中(或洗衣机中), 若产品出现进水情况, 请等待其自然晾干后再使用。

FCC警告语

美国联邦通信委员会警告:
本设备符合美国联邦通信委员会第 15 部分规则。使用时须满足以下两个条件:
(1) 本设备不得造成有害干扰;
(2) 本设备必须接受所收到的任何干扰, 包括可能导致其无法正常工作的干扰。
未经负责合规的一方明确批准的任何变更或修改都可能导致用户操作设备的权限失效。
注意: 本设备已通过测试, 符合美国联邦通信委员会 (FCC) 第 15 部分对 B 类数字设备的限制要求。这些限制旨在为住宅安装提供合理的防干扰保护。本设备会生成、使用并可能辐射无线电频率能量, 若未按照说明进行安装和使用, 可能会对无线电通信造成干扰。但无法保证在特定安装情况下不会发生干扰。如果本设备确实对无线电或电视接收造成干扰 (可通过关闭和开启设备来确定), 建议用户尝试通过以下一种或多种措施来解决干扰问题:
- 重新调整或移动接收天线的位置。
- 增大设备与接收器之间的距离。
- 将设备连接到与接收器不同电路的插座上。
- 咨询经销商或有经验的无线电/电视技术人员寻求帮助。
该设备已通过评估, 符合一般射频辐射暴露要求。该设备可在便携式使用条件下不受限制地使用。

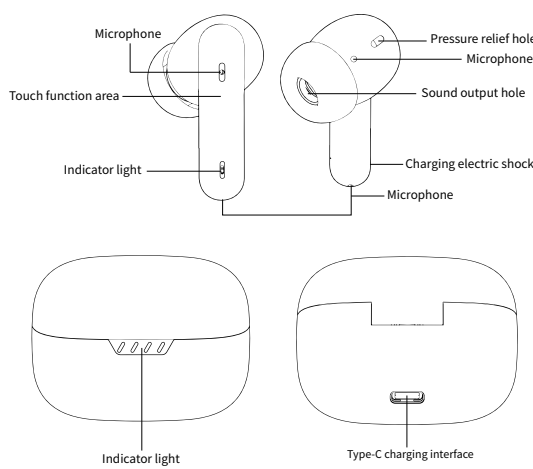
TWS Bluetooth earphones manual

Product model: WT01



WT01

Functional operation diagram



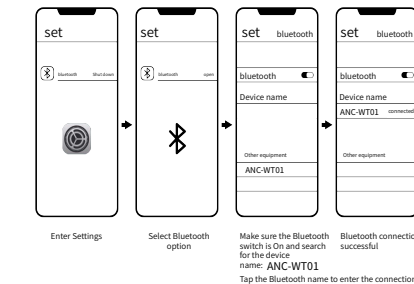
Headphone function operation instructions

1. Power on: Open the charging box for 2~3 seconds and headphones are automatically turned on and matched left and right
2. Shut down: Put the L/R headset into the charging box, close the cover of the charging box, and automatically shut down and disconnect the connection.
3. Answer/hang up: L/R incoming call click function key
4. Reject incoming calls: L/R Long press and hold the multi-function key 2S
5. Pause/play: L/R Click the function key to operate play/pause
6. Previous song: L/Double-click the function key Previous song
7. Next song: R/Double-click the function key next song
8. Volume Up: R Three-click function key volume Up
9. Volume reduction: L three-click function key volume reduction
10. Voice Assistant: L four-click to enter the voice assistant
11. Game/Music Mode: R four-click function key to switch
12. Noise reduction mode:
Power on: Press and hold the multi-function key of the headphone for 3 seconds, the first time is transparent cycle
Power on: Press and hold the multi-function keys for the left/right of the headphones for 3 seconds, and the second time is noise reduction cycle
Power on: Press and hold the headphone multi-function key for 3 seconds, and the third time is to turn off the loop
13. Connect to the mobile phone: Search for Bluetooth name on the Bluetooth details page Connect ANC-WT01
14. Disconnect: The headset can be automatically disconnected by putting it in the charging box.

Headphone connection pairing operation

The open-cover headphones automatically turn on, and the traffic lights flash alternately, and the device search begins.

As shown in the following picture



1. The flashing white light of the charging box indicates that the charging box has low power and needs to be charged.
2. The charging box has four indicator lights. The white light flashes when the charging box is charged. The indicator light is always on for each full box, and the next indicator light is flashing. And so on until the four white lights are always on for full charge of the charging box.
3. When the charging box charges the headset, the headset lights will turn on red and the white lights of the charging box will always turn on.
4. When the headphones are low, the prompt (low battery) indicates a low power prompt.

Product parameter

Frequency response range	20Hz-20KHz	
impedance	32Ω	
sensitivity	105±3db 1KHz	
Bluetooth receiving distance	≥10 m (standard environment)	
Bluetooth version	Bluetooth 5.4	
Support protocol	HSP/HFP/ADP/SBC/ ACC/ AVROP	
Transmission frequency	2402MHz-2480MHz	
Earphone charging time	About 30 minutes (headphones) About 2 hours (charging box)	
Play time	5-6 hours (50% volume)	
Talk time	4-5 hours (50% volume)	
Endurance time	The duration of the call is when Bluetooth headsets are turned on and the phone is connected; about 4 to 5 hours (two-ear phone calls)	
Charging voltage /current	Headset rated input : 5V ==120mA	Charging box rated input: 5V==300mA
Product operating temperature	-10-45℃	
Product storage temperature	-10-45℃	

Product safety information

Please read all instructions and warnings before using this product, non-standard use will cause damage to the product or personal safety.

1. The product contains a battery, please do not expose it to strong sunlight or overheating environments such as heaters. Do not store this product in high temperature, strong light, or strong magnetic field environments.
2. The product should not be placed in harsh environments such as near a fire source. It is prohibited to knock, throw, trample, squeeze or throw it into a fire. If it swells, do not use it.
3. Environmental temperature for product use: -10-50 ° C.
4. Do not use the product improperly in violation of the product manual, causing damage to the product or endangering personal and property safety, and bear the consequences on your own.
5. Non professionals are strictly prohibited from disassembling this product, otherwise it may cause a fire or even completely damage the product.
6. Do not use loads (electrical appliances) that exceed the output current of this product, as exceeding the load will automatically stop working.
7. Please regularly clean the charging contacts of the earphones with a clean cotton cloth to avoid situations where the earphones cannot be charged or turned on due to long-term lack of cleaning.
8. Do not place this product in water (or washing machine). If the product gets wet, please wait for it to dry naturally before using it.

FCC warning words

The FCC warns:
This device complies with FCC Part 15 rules. The following two conditions must be met when using:
(1) This equipment shall not cause harmful interference;
(2) This equipment must accept any interference received, including interference that may cause it to fail to function properly.
Any changes or modifications that are not explicitly approved by the party responsible for compliance may cause the user to operate the equipment to invalidate the user's permission.
Note: This device has been tested and complies with the Federal Communications Commission (FCC) Part 15 restrictive requirements for Class B digital devices. These limitations are designed to provide reasonable protection against interference for residential installations. This equipment generates, uses and may radiate radio frequency energy, and if not installed and used in accordance with the instructions, it may cause interference to radio communications. However, there is no guarantee that there will be no interference in a specific installation situation. If this device does cause interference to radio or television reception (which can be determined by turning off and on), it is recommended that the user try to resolve the interference problem by one or more of the following measures:
- Re-adjust or move the position of the receiving antenna.
- Increase the distance between the device and the receiver.
- Connect the device to a socket with a different circuit than the receiver.
- Consult a dealer or experienced radio/TV technician for help.
The device has been evaluated and meets general RF radiation exposure requirements. The device can be used without restrictions under portable conditions.

