

User Manual



This product is a mini phone rear camera selfie & vlogging monitoring screen. It provides a practical solution to easily and efficiently capture higher-quality photos or videos using the phone's rear camera. It's suitable for YouTubers, Instagramers, Vloggers, and any content creator who wants to create high-quality selfie photos or videos.

Using this screen, you can monitor your framing status and ensure you are in the shooting while using the phone's rear camera. The screen can be connected to a smartphone through both wireless and wired methods. It is equipped with a 3.97-inch screen that can help you monitor more clearly. It has functions such as 180-degree screen rotation, screen brightness adjustment, full screen, or 1:1 screen switching. It has a compact structure, it's easy to carry, and simple to use.

Specifications

Model: SJSN01

Input: 5V 1A

Rated Power: 1.75W

Battery Capacity: 1500mAh

Working hours: >2.5h

Voltage: 3.7V

Power Input Port: USB-C

Audio/Video Transmission Port: USB-C

Screen Size: 3.97 Inches

Screen Resolution: 480 X800 Pixels

Direction of Screen Viewing Angle: Full Viewing Angle

Screen Brightness: Adjustable 300cd/m² (Max)

Working Temperature: 10~+40°C

Storage Temperature: 10~+40°C

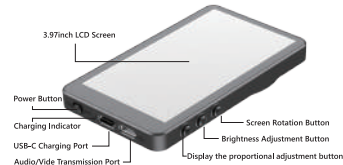
Material: Plastic+Metals

Dimensions: 105mm* 63mm*12.3mm

Weight: 105g

Function Description

- 1 Power On/Off:** The switch is flipped to ON to start, OFF is Power Off.
- 2 Screen 180° Rotation:** Short press the "↺↻" button to rotate the screen 180 degrees.
- 3 Brightness Adjustment:** Short press the "☀️" button to adjust the screen brightness in three levels.
- 4 Screen Displays Proportional Adjustment:** Short press the "📺" button to switch to full screen mode, again to switch to 1:1 mode.



Charging

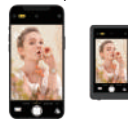
The charging indicator light stays on "RED" during charging and remains Green light after being fully charged

Product Connection Instructions

Wireless Connection Mode
Suitable for iPhone and Android smartphones

Wireless Connection Steps

- 1 Power switch to ON, automatic boot.
- 2 Swipe down the phone screen to open the shortcut menu bar.
- 3 Find the screen projection function of your phone and tap to open it.
- 4 Find SJSN01 in the search list and click connect device.
- 5 The screen is successfully cast, as shown in the figure.



Wired Connection Mode

1. Plug and Play,
2. When connecting to an Android device for the first time, automatically download software (HCCast).

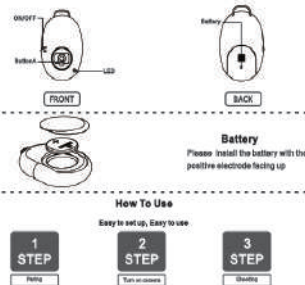
- 1 Power switch to ON, automatic boot.
- 2 For iPhone 15 series phones and Android phones, you can use the included USB-C data cable to connect the iPhone and the screen to enable screen mirroring, plug and play.
* NOTE: For iPhone 14 and below models, please use a lightning to type-c data cable(NOT included).



- 3 The screen is successfully cast, as shown in the figure.



Remote Shutter Instructions



1. Turn on the power button (located at the side of remote), indicator LED flashes and "AB Shutter3" will enter into pairing mode.
2. Turn on your smartphone and search for "AB Shutter3" device.
3. Select the device of "AB Shutter3" from the list and pairing will be finished automatically in few seconds.

FCC Statement

Note: This equipment has been tested and found to comply with the limits for a Class B digital device, pursuant to part 15 of the FCC Rules. These limits are designed to provide reasonable protection against harmful interference in a residential installation. This equipment generates, uses and can radiate radio frequency energy and, if not installed and used in accordance with the instructions, may cause harmful interference to radio communications. However, there is no guarantee that interference will not occur in a particular installation. If this equipment does cause harmful interference to radio or television reception, which can be determined by turning the equipment off and on, the user is encouraged to try to correct the interference by one or more of the following measures:

- Reorient or relocate the receiving antenna.
- Increase the separation between the equipment and receiver.
- Connect the equipment into an outlet on a circuit different from that to which the receiver is connected.
- Consult the dealer or an experienced radio/TV technician for help.

This device complies with part 15 of the FCC Rules. Operation is subject to the following two conditions: (1) This device may not cause harmful interference, and (2) this device must accept any interference received, including interference that may cause undesired operation.

Any changes or modifications not expressly approved by the party responsible for compliance could void the user's authority to operate the equipment.

The device has evaluated to meet general RF exposure requirement. The device can be used in portable exposure without restriction.



L' émetteur/récepteur exempt de licence contenu dans le présent appareil est conforme aux CNR d' Innovation, Sciences et Développement économique Canada applicables aux appareils radio exempts de licence. L' exploitation est autorisée aux deux conditions suivantes:

1. L' appareil ne doit pas produire de brouillage;
2. L' appareil doit accepter tout brouillage radioélectrique subi, même si le brouillage est susceptible d' en compromettre le fonctionnement.