

100mmX100mm

INTELLIGENT HEATED INSOLES

USER MANUAL



Contents

Product Description-----	1
Important User Notes-----	1
Product Diagram-----	2
Size Chart-----	3
Operating Steps-----	4
1. Cut the Insoles-----	4
2. Power On/Off-----	4
3. Temperature Setting-----	4
4. Battery Level Indicator-----	5
5. Charging Indicator-----	5
APP Download/WeChat Mini Program Steps-----	5
1. Download APP or Search for WeChat Mini Program:--	5
2. Connect Bluetooth:-----	6
3. Add Device:-----	6
4. Connect Successfully:-----	6
5. Edit Paired Device:-----	7
6. Notes:-----	8
Technical Parameters-----	9
Troubleshooting-----	9
FCC Warning Statement-----	10

PRODUCT DESCRIPTION

This product is constructed with premium soft, breathable materials, comfortable to wear and fit, is the ideal warm choice in the cold winter. It has built-in intelligent heating system, featuring dual control modes: physical button control + smartphone APP remote control, which abandons the drawbacks of traditional remote control such as easy to lose and invisible, and makes the operation easier and more intelligent, and meets the needs of different use scenarios.

Built-in advanced electronic control system and high-frequency radio frequency dual-channel wireless control technology, which can independently control the temperature of your left and right feet, to achieve personalized and precise temperature control, bringing a more intimate use experience. The insole is equipped with a 3000mAh high-capacity lithium polymer battery, with stable and long-lasting endurance.

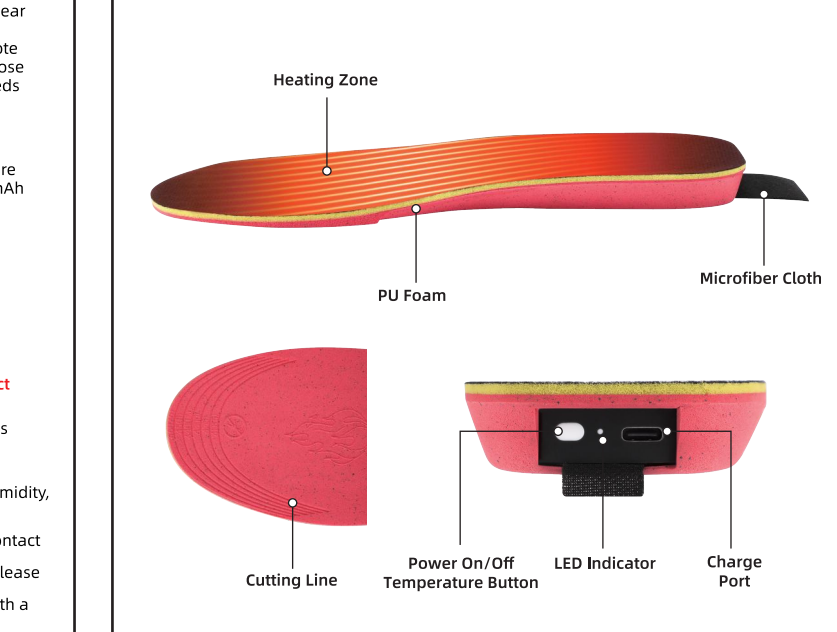
The product adopts plastic injection process, battery compartment is hermetically sealed, effectively preventing from being stepped or pierced by sharp objects, enhancing safety and durability. The whole machine has excellent waterproof, anti-pressure, anti-odor performance.

IMPORTANT USER NOTES

Low-temperature burns warning: To prevent low-temperature burns, this product should not be used in direct contact with the skin!

- Please read this manual carefully before use to ensure the correct and safe use of this product.
- Please make sure the insoles and their batteries are not damaged before use.
- Please make sure the insoles are dry before use, do not fold or puncture.
- This product contains lithium battery, please keep it away from high temperature, humidity, open flame and other environments, avoid violent impact or disassemble the battery.
- It is recommended to fully charge the battery before first use.
- Please do not use it at high temperature for a long time, and do not use it in direct contact with the skin to avoid low-temperature burns.
- If you find the device abnormal (such as abnormal heat, unable to power on, etc.), please stop using and contact after-sales.
- This product cannot be washed with water. It is recommended to wipe the surface with a wet wipe.
- Please make sure the charging port is dry before charging.

PRODUCT DIAGRAM



SIZE CHART

Size Chart					
S			L		
Insole Size(EU)	Insole Size(US)	Insole Length(CM)	Insole Size(EU)	Insole Size(US)	Insole Length(CM)
35	4	23.5	40	8	27
36	4.5	24	41	8.5	27.5
37	5.5	24.5	42	9	28
38	6	25	43	10	28.5
39	6.5	25.5	44	10.5	29
40	8	26.5	45	11	29.5
			46	12.5	30

Tips: Trim the insoles to fit your shoes based on your measured shoe length and our insole length of size chart.
There might be a slight insole length deviation (0.2-0.3cm).
If you encounter any issues during use, feel free to contact us — we will assist you as soon as possible

OPERATING STEPS

1. Cut the Insoles

Cut the insoles to the right size according to the size chart, please measure your shoes before cutting.
* Measure your shoes before you cut them.

Warning: Do not cut beyond the trimming line. Cutting the internal wires will damage the product and render it unusable.

2. Power On/Off

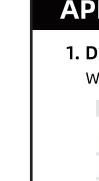
Long press [power/temperature button] for 2 seconds to turn on the device, the indicator light blinks (the color represents the current battery level), Bluetooth is automatically turned on and waiting for connection.

If there is no Bluetooth connection or no operation within 60 minutes, the device will be turned off automatically.
Long press [power/temperature button] for 2 seconds to turn off the device.

3. Temperature Setting

Short press [power/temperature button] in power-on state to cycle through temperature levels (standby→40°C/104°F→50°C/122°F→60°C/140°F→standby)

- Green light is on at 40°C/104°F.
- Blue light is on at 50°C/122°F.
- Red light is on at 60°C/140°F.



4. Battery Level Indicator

Standby status indicator light blinking, the color of blinking light represents the current battery level

- Green color: battery level >66%
- Blue color: between 30% and 66% of battery level
- Red color: battery level <30%

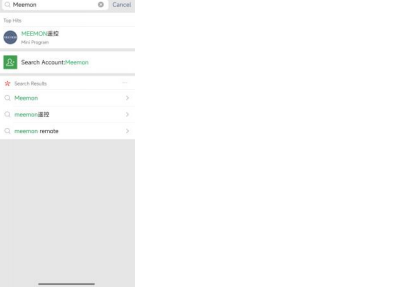
5. Charging Indicator

While charging: Red LED light is on
Fully charged: Green LED light is on (a full charge takes about a few hours).

APP DOWNLOAD/WECHAT MINI PROGRAM STEPS

1. Download APP or Search for WeChat Mini Program:

WeChat Mini Program: Search "Meemon" in WeChat.

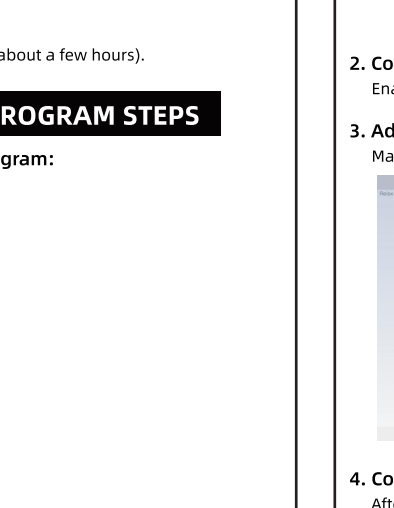


2. Connect Bluetooth:

Enable Bluetooth and Location Permissions in the APP/Mini Program.

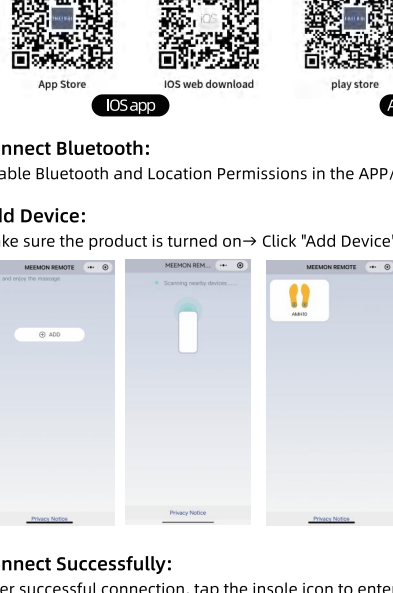
3. Add Device:

Make sure the product is turned on→ Click "Add Device" to search.



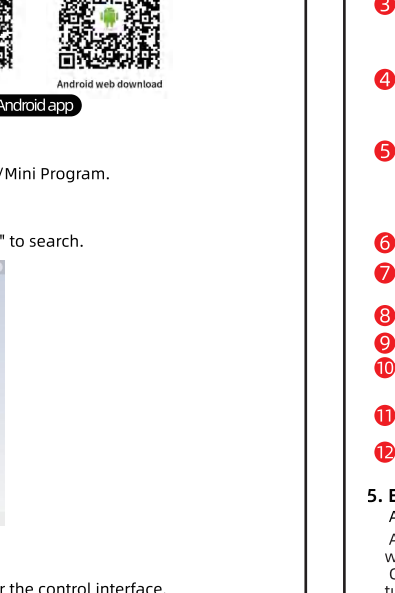
4. Connect Successfully:

After successful connection, tap the insole icon to enter the control interface.



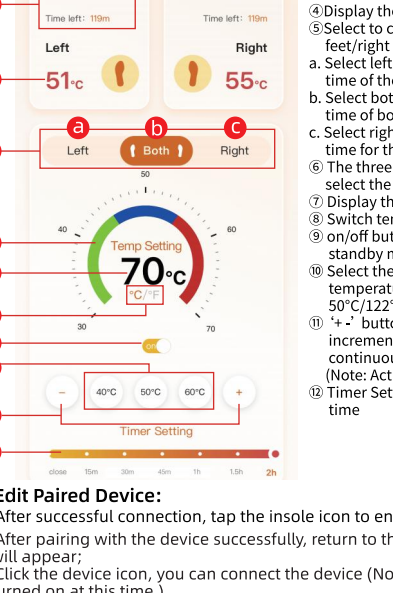
5. Edit Paired Device:

After successful connection, tap the insole icon to enter the control interface.



6. Notes:

- If you have purchased more than one of this product at the same time, one cell phone can connect to more than one device, but cannot control more than one device at the same time, you need to tap into the corresponding device to control that device. (It is recommended that you name the different devices in order to distinguish and control them.)



7. Troubleshooting

This section lists the most common problems about this product, if you can not find the answer to the problem you meet in this table, please contact the seller of the purchase channel.

Fault Description	Possible Cause	Solution
Cannot power on	Battery is exhausted	Please charge the battery in time
Device cannot be searched on APP	The distance between the cell phone and the product is too far	It is recommended to keep the distance between the product and the cell phone less than 10 meters.
	Permission not turned on	Need to open the Bluetooth, some devices need to open the positioning permission.
Heating feeling is not obvious	Too much space in the shoe/thick socks/extremely cold environment/low battery level	Ensure good fit, wear appropriate socks, and ensure sufficient battery power.
Device disconnection	Distance exceeded/obstacles interfering/low battery	Move closer to device, charge

Note: If you are unable to troubleshoot or the product still does not operate ideally, contact after-sales service personnel, do not disassemble or attempt to repair on your own.

TECHNICAL PARAMETERS

Product name: Intelligent Heated Insoles
Model: AMH10
Battery capacity: 3000mAh (per insole)
Rated voltage: 3.7V
Rated power: 5W
Charging voltage: 5V
Charging current: 2A
Package includes: 1 pair insoles, 2pcs charging cables, 1 manual

TROUBLESHOOTING

This section lists the most common problems about this product, if you can not find the answer to the problem you meet in this table, please contact the seller of the purchase channel.

Fault Description	Possible Cause	Solution
Cannot power on	Battery is exhausted	Please charge the battery in time
Device cannot be searched on APP	The distance between the cell phone and the product is too far	It is recommended to keep the distance between the product and the cell phone less than 10 meters.
	Permission not turned on	Need to open the Bluetooth, some devices need to open the positioning permission.
Heating feeling is not obvious	Too much space in the shoe/thick socks/extremely cold environment/low battery level	Ensure good fit, wear appropriate socks, and ensure sufficient battery power.
Device disconnection	Distance exceeded/obstacles interfering/low battery	Move closer to device, charge

Note: If you are unable to troubleshoot or the product still does not operate ideally, contact after-sales service personnel, do not disassemble or attempt to repair on your own.

FCC WARNING STATEMENT

Changes or modifications not expressly approved by the party responsible for compliance could void the user's authority to operate the equipment. This equipment has been tested and found to comply with the limits for a Class B digital device, pursuant to Part 15 of the FCC Rules. These limits are designed to provide reasonable protection against harmful interference in a residential installation. This equipment generates uses and can radiate radio frequency energy and, if not installed and used in accordance with the instructions, may cause harmful interference to radio communications. However, there is no guarantee that interference will not occur in a particular installation. If this equipment does cause harmful interference to radio or television reception, which can be determined by turning the equipment off and on, the user is encouraged to try to correct the interference by one or more of the following measures:

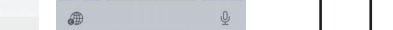
- Reorient or relocate the receiving antenna.
- Increase the separation between the equipment and receiver.
- Connect the equipment into an outlet on a circuit different from that to which the receiver is connected.
- Consult the dealer or an experienced radio/TV technician for help.

This device complies with part 15 of the FCC Rules. Operation is subject to the following two conditions:

- (1) This device may not cause harmful interference.
- (2) This device must accept any interference received, including interference that may cause undesired operation.

- (3) The device has been evaluated to meet general RF exposure requirement.
- (4) The device can be used in portable exposure condition without restriction.

Made in China



CE FCC RoHS

Made in China

CE FCC RoHS

Made in China

CE FCC RoHS

Made in China

CE FCC RoHS

Made in China

CE FCC RoHS

Made in China

CE FCC RoHS