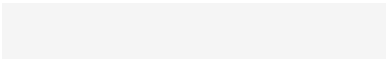


# 1. Antenna Description:

Antenna type	Ceramic antenna
Model	HSGQ-X410DW
Frequency range	5745-5825MHz
Manufacturer	SHENZHEN HS FIBER COMMUNICATION EQUIPMENT CO., LTD
Address	5th Floor, Building 2, Zone B, Hongfa Science and Technology Industrial Park, Tangtou Community, Shiyan Street, Baoan District, Shenzhen, China
ANT Peak Gain	2.05 dBi

# 2. Antenna Photo:

Length:177.18mm  
Width:12.88mm



### 3. Test Equipment & Conditions

#### 3.1 Test instrument

VSWR is tested using Agilent E5071B connected to a hand mechanism, and the status is free space.

#### 3.2 Test environment and methods

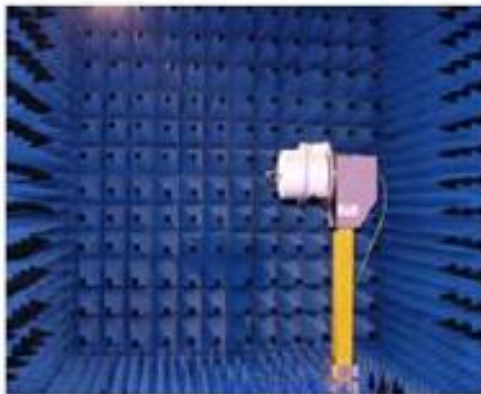
Dark room specifications: ETS-743

TD-SCDMA test equipment: StarPoint SP6010/Agilent 8960

LTE-TDD/FDD-SCDMA test equipment: StarPoint SP8011/CMW500

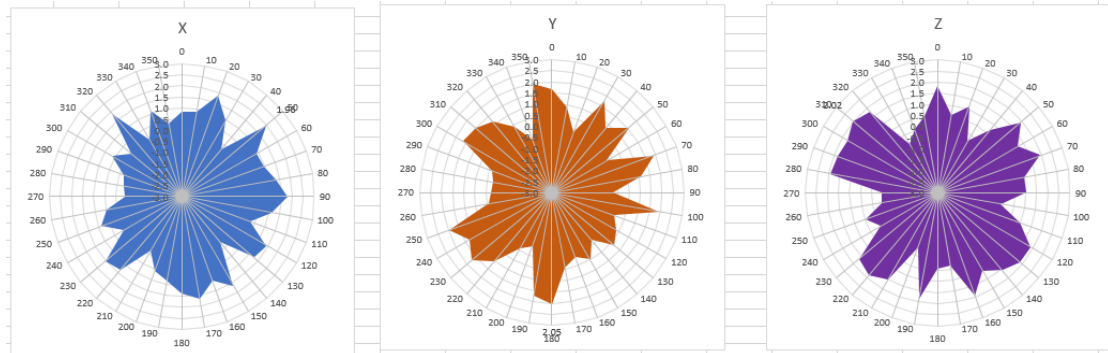
WCDMA/GSM/CDMA test equipment: Agilent 8960

Passive efficiency testing equipment: Agilent Technologies E5071B

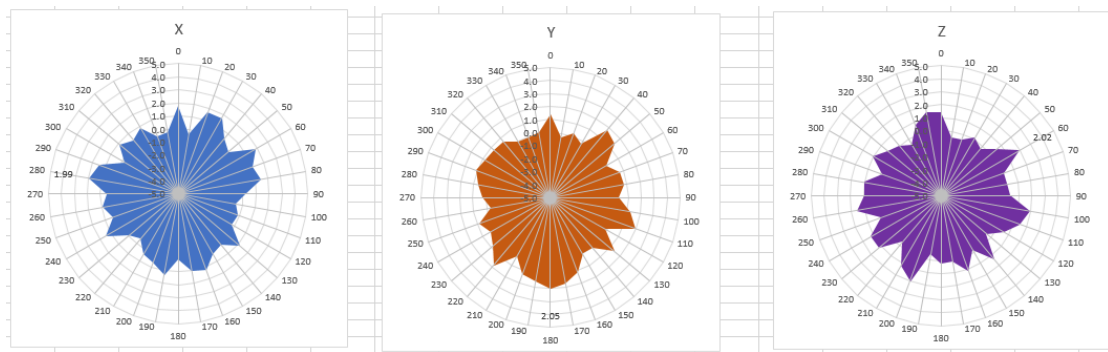


## 4 . Antenna Radiation Pattern

5745MHz



5785MHz



5825MHz

