












DH-E20S Series Quick Guide

1 Preparation

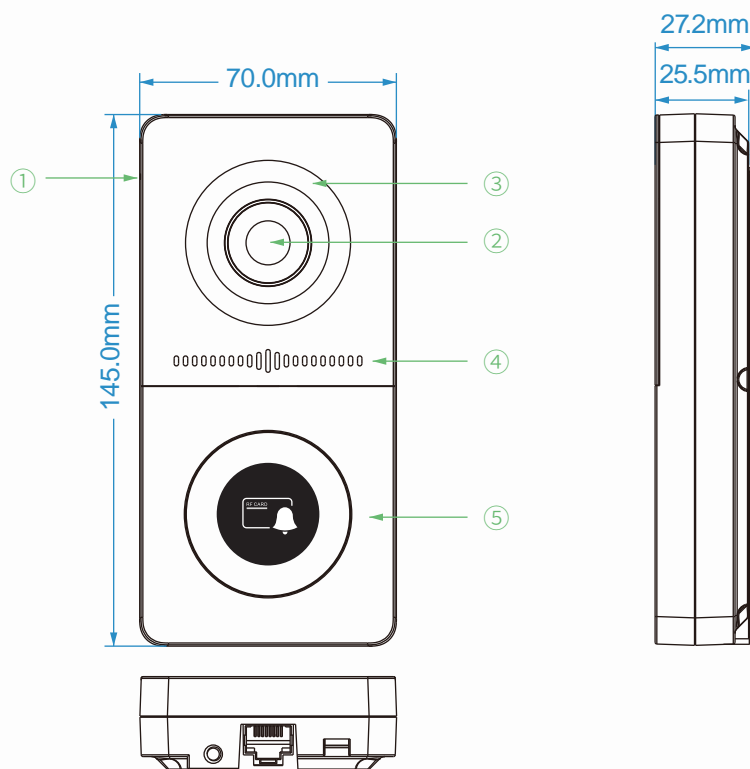
PREPARATION

Please make sure the package contains the following items.

DH-E20S  ×1	Back cover  ×1	Wall bracket  ×1	10-Pin cable  ×1	5-Pin cable  ×1	Hexagonal wrench  ×1
Screw(M4×10)  ×2	Screw(M2.5×4)  ×4	Screw(ST4×20)  ×4	Screw(M4×30)  ×2	Drywall anchor  ×4	

2 Product Overview

PRODUCT OVERVIEW



- | | | | |
|--------------------------------|----------|-------------------|---------------|
| ① MIC | ② Camera | ③ White light LED | ④ Loudspeaker |
| ⑤ RF card reader & Call button | | | |

DH-E20S Series Quick Guide

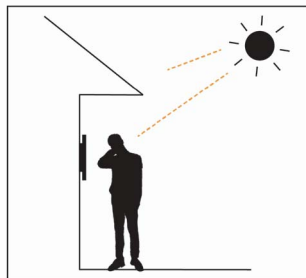
3 | Installation Environment

INSTALLATION ENVIRONMENT

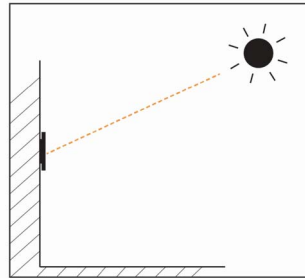
The device can be installed in both indoor and outdoor environment.

Outdoor installation: Avoid to exposing the device to direct sunlight, which will cause damage to device and components due to high temperature.

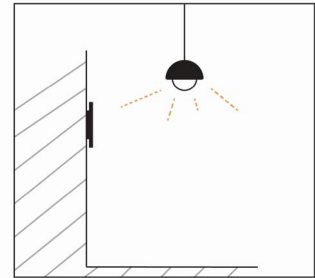
Indoor installation: The device should be installed on somewhere 2 meters (6 feet) away from light or 3 meters (9 feet) away from window/door.



✗ Backlight



✗ Direct sunlight



✗ Close to light

4 | Installation

INSTALLATION

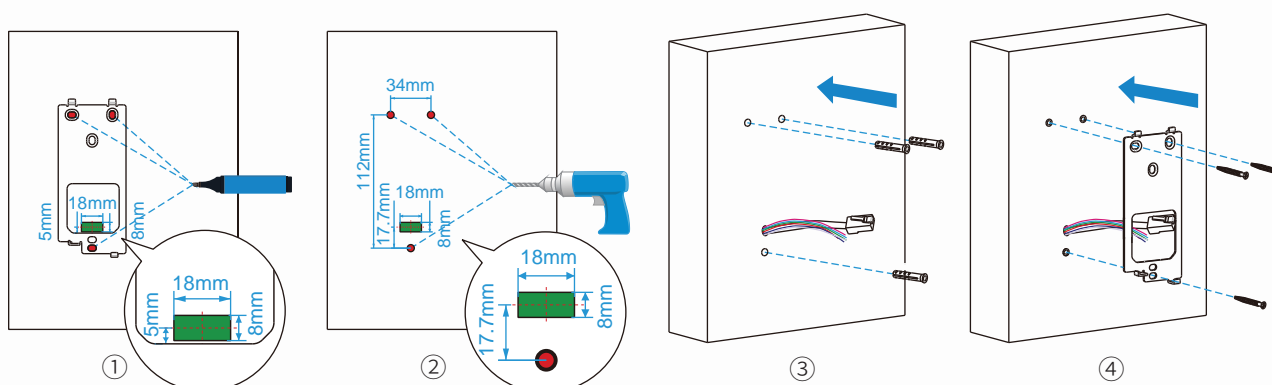
STEP1

A. Without Type 118 Junction Box

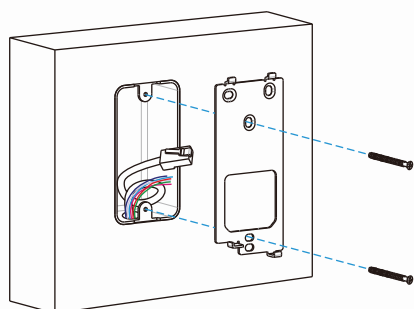
- ① Place the bracket against the wall, make sure the drilling position in the bottom align right below to the cable outlet (marked as gray), then mark the position of drilling hole on the wall.
- ② Take the bracket off the wall and use 6mm impact drill to drill holes in the marked locations.
- ③ Drive 3 expansion tubes into drilling positions.
- ④ Pull all cables and cords through the bracket, then lock the wall bracket by three ST4×20 screws.

★ NOTE: For installation on wooden walls, you can skip ② and ③.

DH-E20S Series Quick Guide

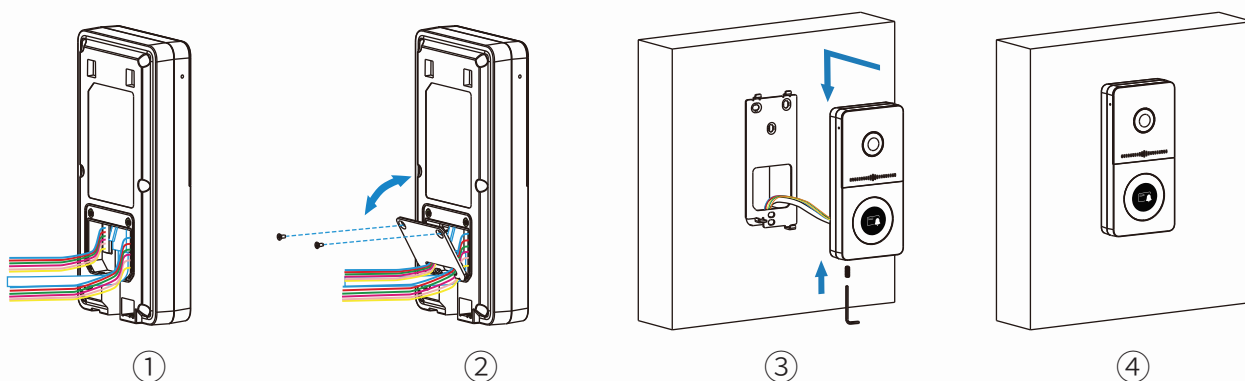


B. With Type 118 Junction Box (recommended)



Pull all cables and cords through junction box and the bracket, then lock the bracket onto the Type 118 box by two M4×30 screws.

STEP2



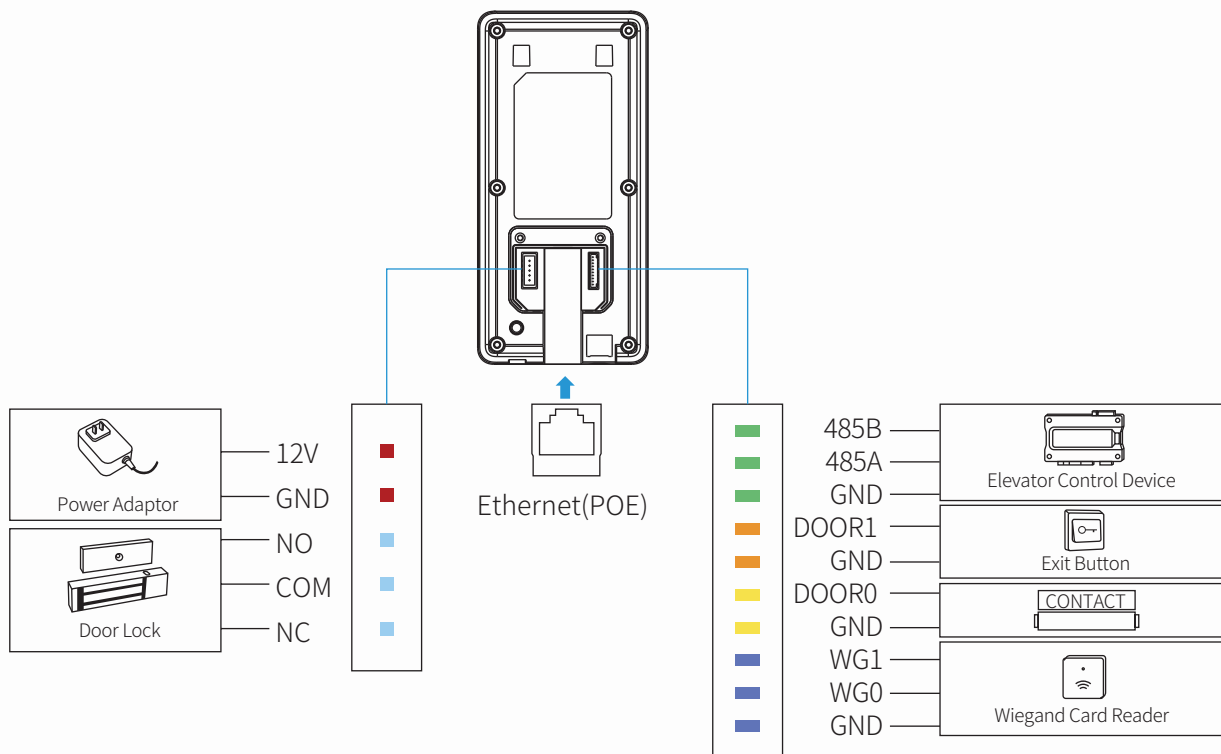
- ① Connect the cable and cords to the corresponding interfaces of device.
- ② Attach the wiring cover and lock it by two M2.5×4 screws.
- ③ Attach the device onto the bracket on the wall, press down to lock by hooks.
- ④ Use hexagonal wrench to fully lock the device by M4×10 screw. Installation is completed.

★ NOTE: With ratchet wrench will improve the efficiency of installation.

DH-E20S Series Quick Guide

5 Interfaces

INTERFACES



6 Status Lights

STATUS LIGHTS

Status	Description
OFF	Normal(Idle)
white Breathing Light	Calling
	Receiving a call
white Light Always On	Talking
Red Breathing Light	Network is unavailable(Offline)
Blue Breathing Light	Network is available, but SIP account isn't registered
Green Breathing Light 3 seconds	Booted up
Red/Blue Light Flashing	Firmware upgrading
Green Light on for 10 minutes	Alarm zones armed
Red Light Always On	Indoor unit alarm zones or E20 tamper alarm triggered

DH-E20S Series Quick Guide



7 | Configurations

CONFIGURATIONS

● Check IP Address

Press on the device call button and hold for 5 secs, the device will broadcast the IP address digits by voice.

● Set SIP Account

Log into Web configuration portal of device, set up and register SIP accounts in INTERCOM-ACCOUNT page.

● Set DTMF Code

Select DTMF mode and configure the code in SYSTEM-RELAY page of Web configuration portal.

★ NOTE: You can refer to device user manual for more details.

8 | Functions

FUNCTIONS

● Card/Keyfob Unlock

Incoming calls to DH-E20S will be answered automatically by default.

● Auto answer

Press the configured DTMF code on keypad of device answering the call, the lock connected on DH-E20S will be unlocked remotely.

● DTMF Unlock

Attach the saved access card or keyfob on the card reader area of DH-E20S to unlock the door.

9 | FCC

FCC

Note: This equipment has been tested and found to comply with the limits for a Class B digital device, pursuant to part 15 of the FCC Rules. These limits are designed to provide reasonable protection against harmful interference in a residential installation. This equipment generates, uses and can radiate radio frequency energy and, if not installed and used in accordance with the instructions, may cause harmful interference to radio communications. However, there is no guarantee that interference will not occur in a particular installation. If this equipment does cause harmful interference to radio or television reception, which can be determined by turning the equipment off and on, the user is encouraged to try to correct the interference by one or more of the following measures:

- Reorient or relocate the receiving antenna.
- Increase the separation between the equipment and receiver.
- Connect the equipment into an outlet on a circuit different from that to which the receiver is connected.
- Consult the dealer or an experienced radio/TV technician for help.

DH-E20S Series Quick Guide

Any Changes expressly or modifications not approved by the party responsible for compliance could void the user's authority to operate the equipment.

This device complies with part 15 of the FCC Rules. Operation is subject to the following two conditions:

- (1) This device may not cause harmful interference, and
- (2) this device must accept any interference received, including interference that may cause undesired operation.

FCC Radiation Exposure Statement:

This equipment complies with FCC radiation exposure limits set forth for an uncontrolled environment. This transmitter must not be co-located or operating in conjunction with any other antenna or transmitter. This equipment should be installed and operated with minimum distance 20cm between the radiator & your body.



Notice Information

Information contained in this document is believed to be accurate and reliable at the time of printing. This document is subject to change without notice. The update version of this document can be viewed on NEXhome website: <http://www.nexhome.ai>

©Copyright 2022 NEXhome Ltd. All rights reserved.

NEXhome Smart Technologies Co., Ltd.

Add: 7th Floor, A Bldg Star-Net Plaza, No.33 Xingang Avenue, High-tech Zone, Fuzhou, Fujian, China

Web: www.nexhome.ai