

Smart Dual-Bowl Pet Water Fountain User Manual

Precautions

Please read this instruction manual carefully before using the product and keep it properly.

Warnings:

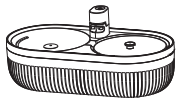
- This product and its accessories are not edible.
- Please use it in a dry environment indoors. Avoid placing the product in areas exposed to direct sunlight.
- Place the product on a level surface. Do not place it on high surfaces to prevent falling, which could damage the device or injure pets.
- Do not fill the water tank with hot or boiling water as it may damage the product.
- Please store the power cord properly to avoid malfunctions caused by pets chewing on the power cord.
- Do not disassemble or repair the device on your own.
- This device is not recommended for young pets under three months or for large dogs.
- Children must use this product under adult supervision.

- This device is not suitable for individuals with reduced physical, sensory, or mental capabilities, or lack of experience and knowledge (including children), unless supervised or instructed by someone responsible for their safety.
- Children should not clean or maintain the product without supervision.

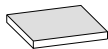
Note:

- Be sure to disconnect the power supply before removing parts for cleaning. Do not immerse the main unit and power cord in water during cleaning. Make sure that the waterproof rubber plug of the power connector of the main unit is tightly covered before rinsing.
- Before first use, clean all parts according to the cleaning instructions. Do not use hot or boiling water.
- It is recommended to replace the Filter cotton/filter element once a month.
- It is normal for the pump filter cotton to turn yellow over time.

Package Contents



Smart Dual-Bowl
Pet Water Fountain



Filter Cartridge



Power Cable



User Manual

Note: Product and accessory illustrations in this manual are for reference only. Due to product updates and upgrades, actual product appearance may differ slightly. Please refer to the actual product.

Button function

Button	Operation	Function
Power touch button	Press once	Switch to normal mode
	Press twice	Switch to smart mode (only when connected to the app)
	Press third	Switch to night mode (only when connected to the app)
	Press fourth	Sensor water dispensing Mode
	Press five	Power off

Button	Operation	Function
Power touch button	Press for 10 seconds in continuous water discharge mode	Enter network configuration mode and start network configuration

Indicator light status

Network configuration mode	Indicator light status	Device status
Connecting to WiFi	Red and blue flashing	Waiting for network configuration
	Blue is always on	Network configuration successful
	Purple is always on	Network configuration failed/disconnected

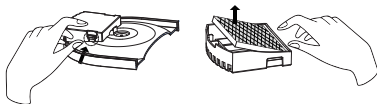
Water discharge mode	Indicator light status (with network)	Indicator light status (without network)
Normal mode	Blue light Steady On	Purple light Steady On
Sensor water dispensing mode	Blue light Flashing	Purple light Flashing
Intelligent mode	Blue light Dimmed	Purple light Dimmed
Night mode	Blue light Faintly Lit	Purple light Faintly Lit

Safety reminder	Indicator light status
Water fountain is short of water	Red light flashes intermittently
Child lock is on	Red light flashes quickly

Product Installation

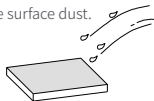
1. Clean all parts before installation

- Remove the lid, Water Tray 2, water pipe, filter holder, and filter, and clean each component. Do not use hot or boiling water.
- The host can be wiped with a damp towel, do not immerse it in water. Before wiping, make sure that the waterproof Rubber stopper on the power connector of the main unit is tightly covered.
- The pump is non-detachable. Do not unplug the power cord between the main unit and the pump. The pump filter can be removed for cleaning.
- Refer to the diagrams for disassembling the filter holder and filter.



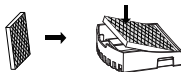
2. Cleaning the Filter Cotton

- Rinse the filter cotton under running water for 1 minute to remove surface dust.



3. Install the Components

- ① Place the filter into the designated position at the bottom of Water Tray 1 on the lid. Then install the filter holder at the bottom of Water Tray 1. Press the holder from the inside outward until you hear a 'click' sound, indicating it is secured.
- ② Connect the water pipe between the main unit and the water pump.
- ③ Put the lid back onto the water container.



Product Usage

1. Power On

The product operates by connecting the power cable. Plug the power cord into a power adapter ($\geq 5V-1A$) and connect to a power outlet.

Note:

- When using the power cable, ensure the adapter and cable remain in a dry environment. Do not touch them with wet hands and keep them away from water or rain.

2. Adding Water

Lift the handle and remove Water Tray 2 from the lid. Add water into the tank, then place the lid back on. Do not exceed the maximum water level line.

3. Turning on the Device

- Press and hold the power button for about 2 seconds to turn on. The device's status light will turn solid white and then turn off. It enters sensing mode by default.

4. Switching Water Dispensing Modes

When the device is not connected to the app, pressing the power button supports only the following water dispensing mode:

- Normal Mode: When the device is connected to the power supply, it can be switched to this mode. In this mode, the device remains in a continuous water dispensing state.

- Sensor water dispensing Mode: In this mode, the device's radar sensor detects the presence of a pet and immediately dispenses water for 10 seconds. No water is dispensed during the remaining time.

After connecting to the app, pressing the power button allows switching between the following water dispensing modes:

- Intelligent Mode: In this mode, the device dispenses water for 10 seconds every 15 minutes, with the water dispensing interval time adjustable via the app. Additionally, the device's radar sensor detects the presence of a pet and immediately dispenses water for 10 seconds.
- Night Mode: The device remains in a continuous water dispensing state, but the water volume is set to the lowest level, and the indicator light is dimly lit.

Note:

- When the device is in Smart or Night Mode, if the network is disconnected, pressing the power button will only switch between Sensor or Normal Mode.

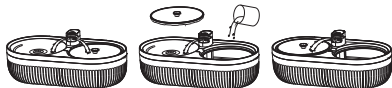
App Connection

Use scenarios

Multi-pet scenario: When there are multiple pets or when there is a higher need for quietness, you can set it to dual water outlet mode.

Water adding scenario: When you need to add water to the water box, please set it to left water outlet and remove water tray 2.

Going out scenario: If you are worried about the power outage of the product when you go out, you can take out water tray 2 to ensure basic drinking water when the power is off. Water tray 2 can be placed on water tray 1.



Multi-pet
scenario

Water adding
scenario

Going out
scenario

Scan the QR code to download and install the app. If the app is already installed, you will be directed to the device connection page. Or search for "Smart Life "in the app store to download it. Open the app homepage, tap the "+" in the upper right corner, and follow the instructions to add the device.

Note:

- Due to app upgrades and updates, actual operation may slightly differ from the above. Please follow the current in-app guidance.



Scan to install



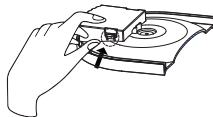
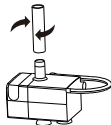
Chinese users scan

Cleaning and Maintenance

It is recommended to clean each component and completely change the water once a week, and replace the filter element once a month.

1. Before cleaning, unplug the power cord and tighten the waterproof plug.
2. Remove the lid, twist and detach the water pipe from the main unit and the pump.
3. Remove the filter holder and filter. Take out the pump filter from the pump.
4. Thoroughly clean all components. The main unit and lid can be rinsed with water, but do not immerse the main unit.
5. Clean the inner and outer walls of the water tank. Dry the outer surface.
6. After cleaning, insert both ends of the water pipe into the interfaces of the main unit and pump. Ensure a firm connection, then reinstall the other components in order.

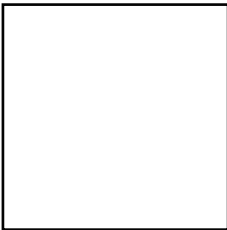
Note: The pump filter protects the pump. Do not use the device without the filter.



Specifications

Product Name:	Smart Dual-Bowl Pet Water Fountain
Model Number:	YSJ-01W
Input Parameters:	DC5V-1A
Rated Power:	<3W
Capacity:	4L
Wireless Connectivity:	2.4G / 5G
Operating Temperature:	5°C ~ 40°C
Supported Systems:	Android 8.0 or iOS 12.0 and above
Product Dimensions:	370 × 188 × 152 mm

Product video



Scan the QR code to watch
the product usage video

FCC Warning

This device complies with Part 15 of the FCC Rules. Operation is subject to the following two conditions:

(1) This device may not cause harmful interference, and (2) this device must accept any interference received, including interference that may cause undesired operation.

NOTE 1: This equipment has been tested and found to comply with the limits for a Class B digital device, pursuant to part 15 of the FCC Rules. These limits are designed to provide reasonable protection against harmful interference in a residential installation. This equipment generates, uses and can radiate radio frequency energy and, if not installed and used in accordance with the instructions, may cause harmful interference to radio communications. However, there is no guarantee that interference will not occur in a particular installation. If this equipment does cause harmful interference to radio or television reception, which can be determined by turning the equipment off and on, the user is encouraged to try to correct the interference by one or more of the following measures:

- Reorient or relocate the receiving antenna.
- Increase the separation between the equipment and receiver.
- Connect the equipment into an outlet on a circuit different from that to which the receiver is connected.
- Consult the dealer or an experienced radio/TV technician for help.

NOTE 2: Any changes or modifications to this unit not expressly approved by the party responsible for compliance could void the user's authority to operate the equipment.

RF Exposure Statement

To maintain compliance with FCC'S RF Exposure guidelines, This equipment should be installed and operated with minimum distance of 20cm between the radiator and your body. This device and its antenna(s) must not be co-located or operation in conjunction with any other antenna or transmitter.