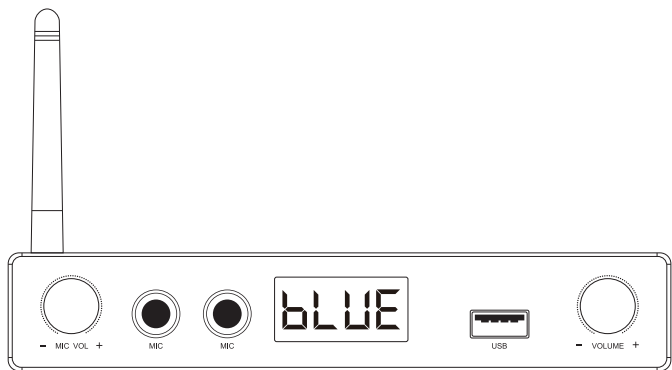


Ransanx

HiFi Stereo Audio Amplifier User manual



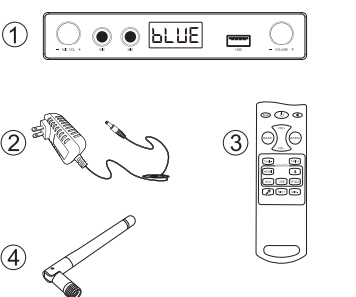
X100

Thank you for choosing our HiFi Stereo Audio Amplifier !

With its mini and fashion design , Multi-channels input interfaces , It will be the best choice for your various home passive speakers . Please read this user manual carefully before use , in order to know its installations , various functions and basic operations !

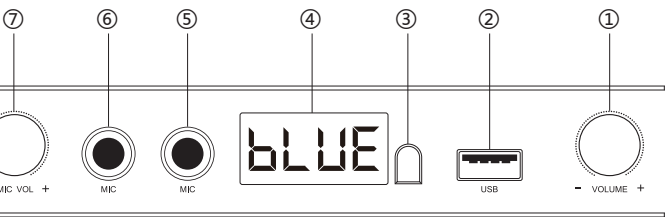
What's In the box :

1. HiFi Stereo Audio Amplifier
2. Power Supply 21V/3A
3. Remote Control
4. Bluetooth Antenna



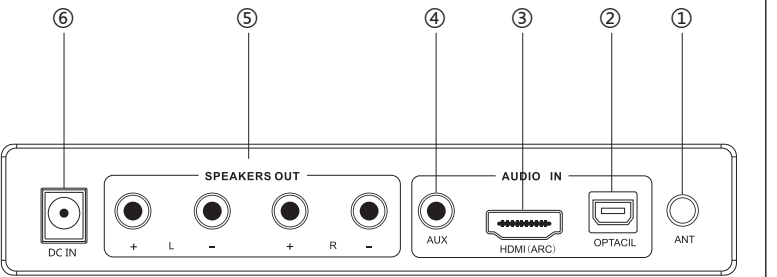
Front Panel Overview:

1. Main Volume Knob: Turn up/down the Amplifier Volume, Push the Volume Knob to Switch the input mode : Bluetooth/HDMI ARC/Optical/AUX/USB
2. USB Input Port: Connect the USB Flash Drive to play the songs
3. IR Window : when you operate the amplifier by remote control , please point the remote control to this IR window for fast and accurate reaction
4. LED Display : Display Input Mode/Volume/Bass/Tremble/Sound effects /Songs List
5. Microphone Input 2: Connect the Second Wired Microphone
6. Microphone Input 1: Connect the First Wired Microphone
7. Microphone Volume Knob: Turn up/down the Microphones, Push the MIC Volume Knob to switch the microphone sound effects : E01 Singing mode/E02 Meeting mode

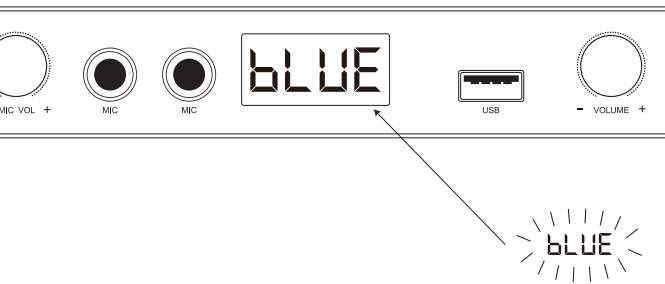


Rear Panel Overview:

1. Bluetooth Antenna Port
2. Digital Optical Input Port
3. HDMI ARC input port
4. 3.5MM AUX Port
5. Speaker R/L output Port
6. DC power supply Input Port



LED Display Instruction:

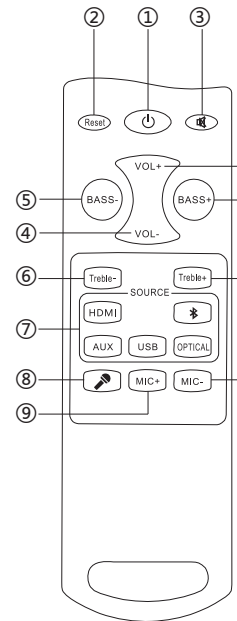


1. **BLUE** : Bluetooth Input Mode
2. **ARC** : HDMI ARC Input Mode
3. **OPT** : Optical Input Mode
4. **AUX** : Auxiliary 3.5MM Input Mode
5. **USB** : USB input Mode

Remark: Please set your audio output mode into PCM when you switch the amplifier into the HDMI ARC or Optical digital Input Mode , Otherwise there will be noise or no sound , because the amplifier doesn't support Dolby sounds decoding.

Remote Control Overview:

1. On/Off : Turn on/off the amplifier
2. Reset: One key to return the factory default setting on the volume and tunes
3. Mute: Mute on/off the amplifier
4. V+/V- : Turn up or turn down the volume
5. Bass+/Bass- : Increase or reduce the Bass
6. Treb+/Treb- : Increase or reduce the treble
7. Source: Switch the audio input mode among : Bluetooth/HDMI ARC/Optical/AUX/USB
8. : Switch the microphone background sounds effect (E01 Singing mode/E02 Meeting mode)
9. MIC+: Increase the microphone volume
10. MIC-: Reduce the microphone volume



Product Parameters:

Power Adapter: 21V/3A, DC Input Range: 12-24V
MAX Power Output: 50W x 2, Terminating Impedance: 2 Ohm - 8 Ohm
THD ≤ 0.04%, SNR ≥ 98dB, Input Sensitivity ≤ 280mV
Frequency Range: 20Hz - 20kHz (±1 dB),
Input Mode: Bluetooth/HDMI (ARC)/Optical /AUX/USB/MIC*2
Bluetooth Transmission Distance: 10M
Product size : 157*93*30MM , Material : Aluminium alloy

Troubleshooting:

Problem	Reason	Solution
No sound from Amplifier	1. Not connected the polarity of passive speakers correctly 2. Not connected the audio cable into the right interface deeply 3.The Input mode is not correct, which your audio source is playing	1. Check whether the connection on the polarity of passive speaker is right 2. Insert the audio cable to the right interface deeply 3. Switch the amplifier input mode to the correct one which you connected
No Power	1. The power adapter is not connected well 2. The power socket is not switch on to supply the power	1. Check and connect the supplied power adapter to the power socket well 2. Make sure the power socket is on power
The bluetooth doesn't work	1. Your audio player doesn't have bluetooth , or don't support A2DP bluetooth music play 2. There're too many connected bluetooth devices to the your bluetooth audio player	1. Check and make sure your audio player have bluetooth function . 2. Reboot the power amplifier , and clear off all the connected bluetooth devices , and reconnect it to the power amplifier
LED display is off	The power amplifier is setted to turn off the automatically within 3 minutes, if there're no operation orders	Press any key on the remote to turn on the LED display
The remote doesn't work	1. The batteries are installed wrongly on the polarity. 2. The batteries are completely exhausted	1. Check the battery polarity mark on the remote battery cavity, and install the batteries correctly 2. Take out the exhausted batteries, and put in the new batteries instead



FCC Caution
This device complies with part 15 of the FCC Rules. Operation is subject to the following two conditions: (1) This device may not cause harmful interference, and (2) this device must accept any interference received, including interference that may cause undesired operation.

Any Changes or modifications not expressly approved by the party responsible for compliance could void the user's authority to operate the equipment.

Note: This equipment has been tested and found to comply with the limits for a Class B digital device, pursuant to part 15 of the FCC Rules. These limits are designed to provide reasonable protection against harmful interference in a residential installation. This equipment generates uses and can radiate radio frequency energy and, if not installed and used in accordance with the instructions, may cause harmful interference to radio communications. However, there is no guarantee that interference will not occur in a particular installation. If this equipment does cause harmful interference to radio or television reception, which can be determined by turning the equipment off and on, the user is encouraged to try to correct the interference by one or more of the following measures:
-Reorient or relocate the receiving antenna.
-Increase the separation between the equipment and receiver.
-Connect the equipment into an outlet on a circuit different from that to which the receiver is connected.
-Consult the dealer or an experienced radio/TV technician for help.

The device has been evaluated to meet general RF exposure requirement. The device can be used in portable exposure condition without restriction.