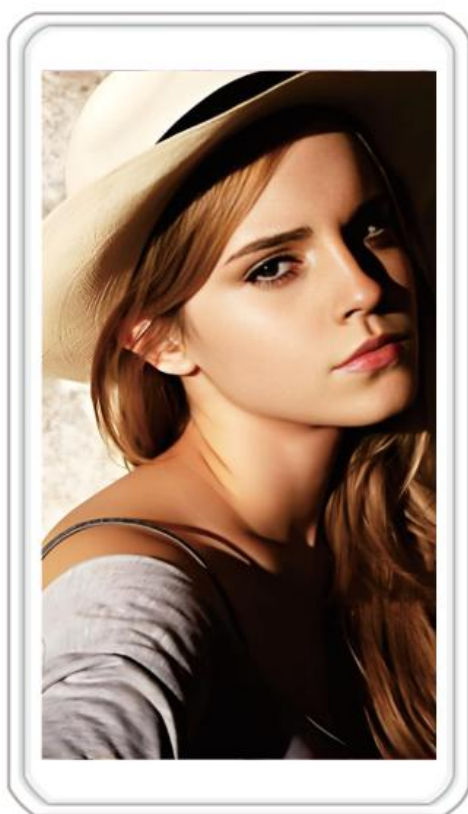


■ 使用说明书 ■



请在 使用本产品之前阅读使用说明书

功能说明

电 源 开 关：拨动开关可打开或关闭机器

充 电 指 示 灯：充电时红灯常亮，充满时红灯灭。

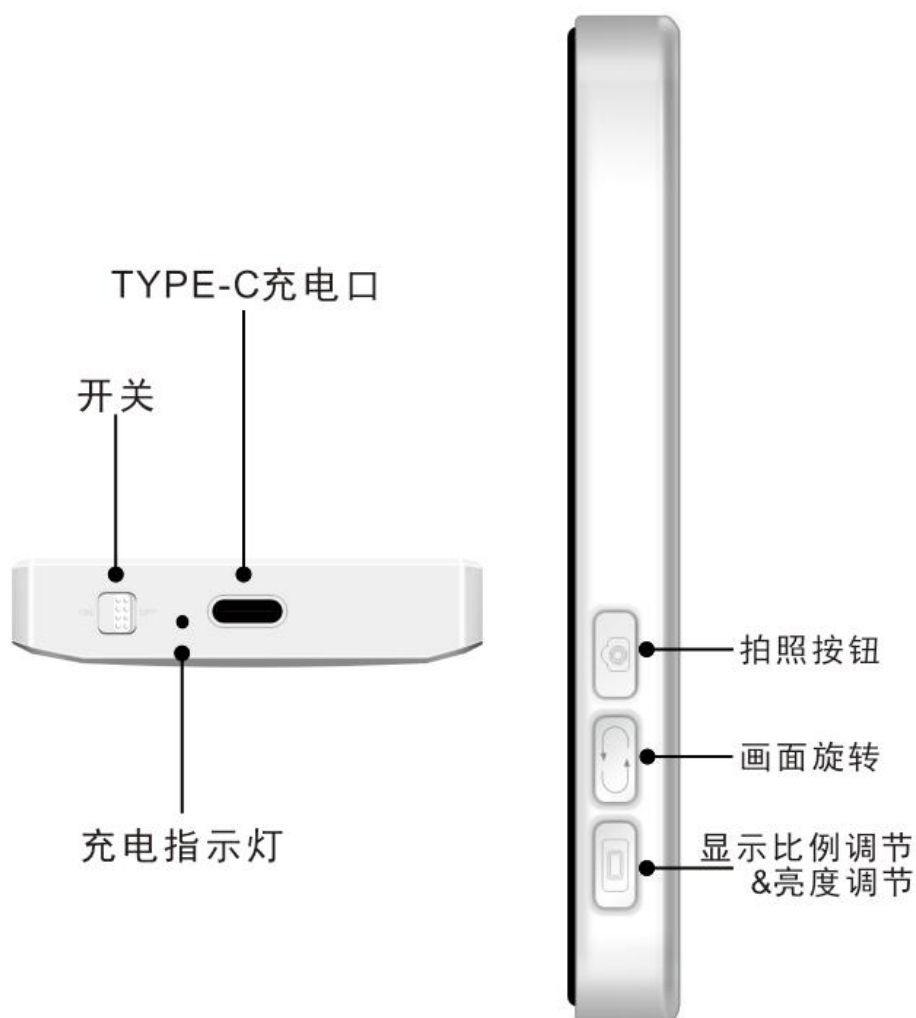
拍 照 按 钮：可操作拍照或录像

（手机要先配对连接设备蓝牙）

画面旋转按钮：可将画面180° 旋转

显示比例调节&亮度调节按钮：

短按可切换全屏模式和1:1模式；长按可调节屏幕亮度。

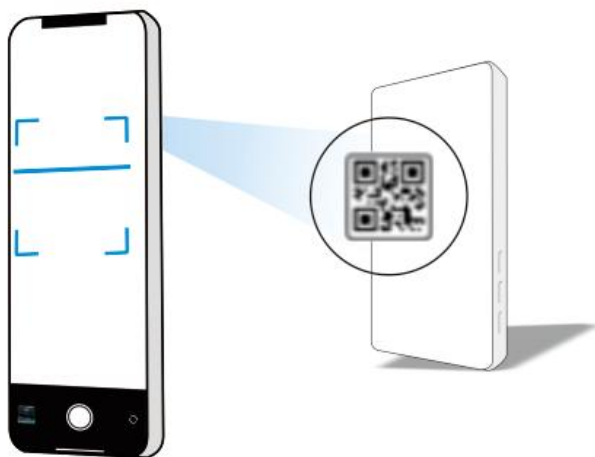


●苹果手机连接方法

连接方法步骤 | 连接方法（一）

步骤一

打开手机相机，扫描设备上二维码加入网络DIRECT-MDXXXX



步骤二

在手机控制中心中点击屏幕镜像

在搜索列表中找到” DIRECT-MDXXXX”,点击连接设备



●苹果手机连接方法

连接方法步骤 | 连接方法（二）

步骤一

打开手机设置-无线局域网，
找到网络DIRECT-MDXXXX
输入密码“12345678”后连接



密码 12345678

步骤二

在手机控制中心中点击屏幕镜像
在搜索列表中找到” DIRECT-MDXXXX”,点击连接设备



● 安卓手机连接方法

连接方法步骤 I

步骤一

从手机屏幕右上角向下滑动，打开快捷菜单栏

步骤二

点击手机无线投屏

步骤三

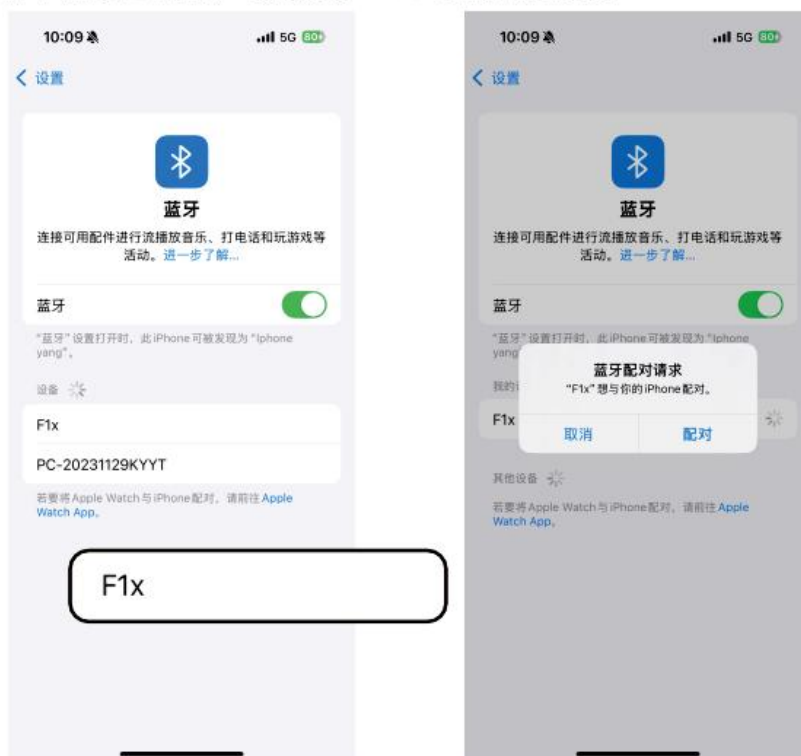
在搜索列表中找到” DIRECT-MDXXXX”,点击连接设备



蓝牙连接步骤 I

(手机连接设备蓝牙后才支持拍照按钮)

打开手机设置-蓝牙，找到设备” F1x”进行配对连接



蓝牙遥控配对步骤 I

步骤一

打开蓝牙遥控器开关

步骤二

打开手机设置-蓝牙，找到设备“AB Shutter3”进行配对连接
连接成功后，可在遥控器上操作拍照和录像功能

■ User Manual ■



Read the instruction manual before use.

Functional specification |

Power Switch: Switch to turn the device on/off.

Charging Indicator: Red light stays on while charging; turns off when fully charged.

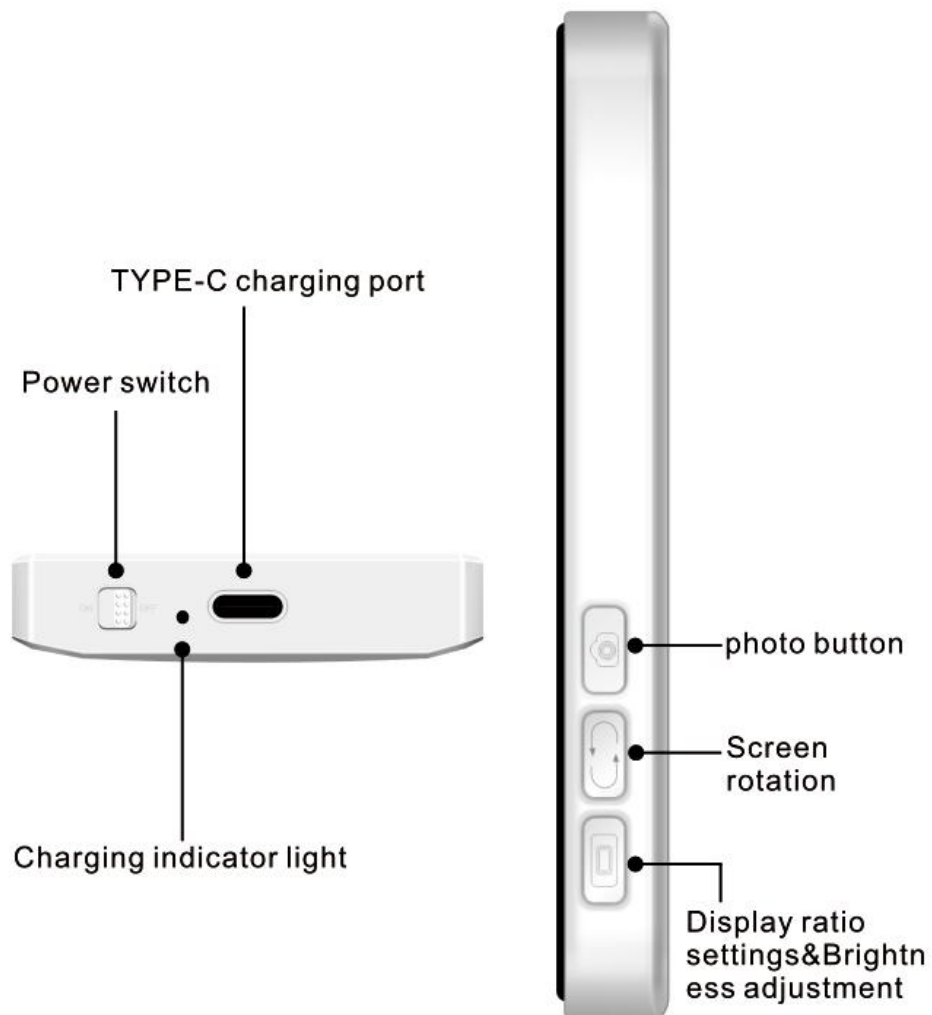
Photo Button: Controls photo/video capture (requires Bluetooth pairing).

Screen Rotation Button: Rotates the display 180°.

Aspect Ratio & Brightness Adjustment Button:

Short press: Switch between full-screen and 1:1 mode.

Long press: Adjust screen brightness.

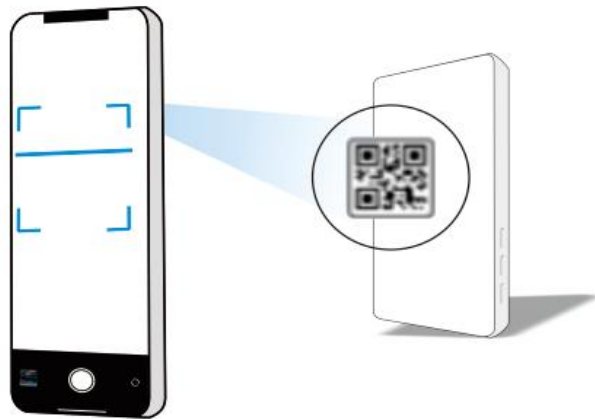


● iPhone Connection Method

Connection Steps | [Method 1:](#)

Step 1

Open the phone's camera and scan the QR code on the device to join the network DIRECT-MDXXXX.



Step 2

Tap Screen Mirroring in the phone's Control Center.
Locate DIRECT-MDXXXX in the search list and tap to connect.



● iPhone Connection Method

Connection Step 1 Method 2:

Step 1

Go to Settings > Wi-Fi, find the network DIRECT-MDXXXX, and connect using the password "12345678".



Step 2

Tap Screen Mirroring in the phone's Control Center.
Locate DIRECT-MDXXXX in the search list and tap to connect.



● Android Phone Connection Method

Connection Step

Step 1

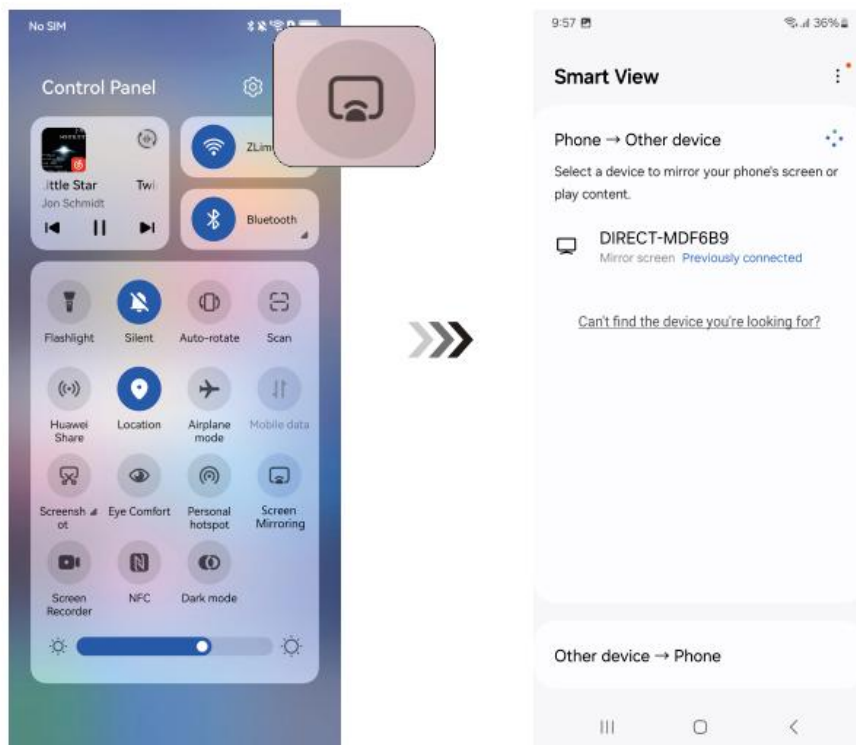
Swipe down from the top-right corner of the screen to open the Quick Settings panel.

Step 2

Tap Screen Mirroring (or Cast).

Step 3

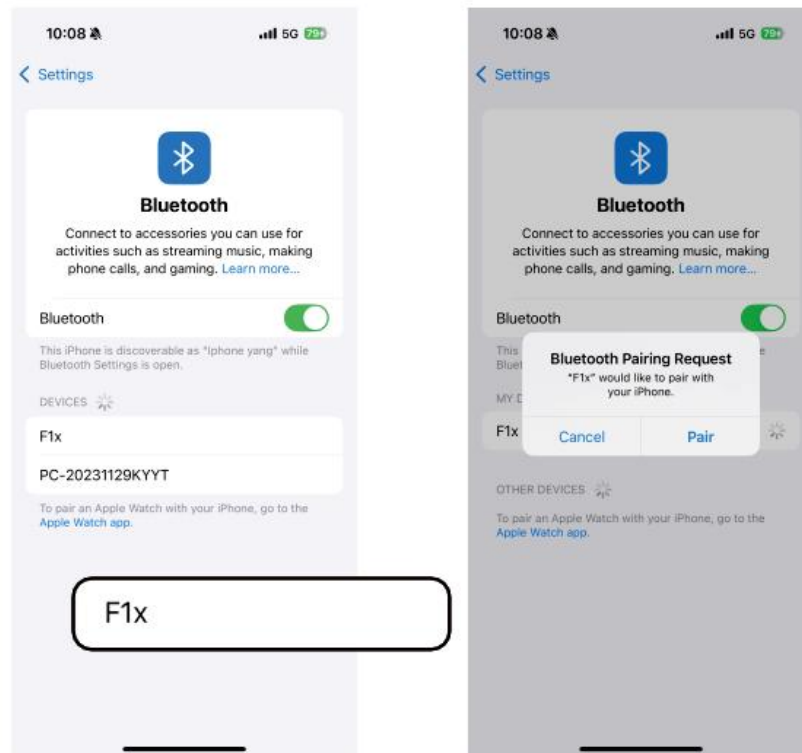
Locate DIRECT-MDXXXX in the search list and tap to connect.



Bluetooth Connection Steps |

(Photo button will be available after paring)

Go to Settings > Bluetooth, find the device F1x, and pair/connect.



Bluetooth Remote Pairing Steps |

Step 1

Turn on the Bluetooth remote control.

Step 2

Go to Settings > Bluetooth, find the device AB Shutter3, and pair/connect. After pairing, use the bluetooth remote to control photo/video functions.

This device complies with part 15 of the FCC Rules. Operation is subject to the following two conditions: (1) this device may not cause harmful interference, and (2) this device must accept any interference received, including interference that may cause undesired operation.

Any changes or modifications not expressly approved by the party responsible for compliance could void the user's authority to operate the equipment.

NOTE: This equipment has been tested and found to comply with the limits for a Class B digital device, pursuant to Part 15 of the FCC Rules. These limits are designed to provide reasonable protection against harmful interference in a residential installation. This equipment generates, uses and can radiate radio frequency energy and, if not installed and used in accordance with the instructions, may cause harmful interference to radio communications. However, there is no guarantee that interference will not occur in a particular installation.

If this equipment does cause harmful interference to radio or television reception, which can be determined by turning the equipment off and on, the user is encouraged to try to correct the interference by one or more of the following measures:

- Reorient or relocate the receiving antenna.
- Increase the separation between the equipment and receiver.
- Connect the equipment into an outlet on a circuit different from that to which the receiver is connected.
- Consult the dealer or an experienced radio/TV technician for help.

The device has been evaluated to meet general RF exposure requirement. The device can be used in portable exposure condition without restriction