

## 1. Antenna Description:

Antenna type	PCB antenna
Model	MJC-CF003
Frequency range	2400-2500MHz
Manufacturer	SHENZHEN MUJICA TECHNOLOGY CO.,LTD
Address	Room 730, Shenzhou Computer Building, JuLiFuRen Blvd, BanTian, Longgang District, Shenzhen City, Guangdong Province, China
ANT Peak Gain	0.82 dBi

## 2. Antenna Photo:





### 3. Test Equipment & Conditions

#### 3.1 Test instrument

VSWR is tested using Agilent E5071B connected to a hand mechanism, and the status is free space.

#### 3.2 Test environment and methods

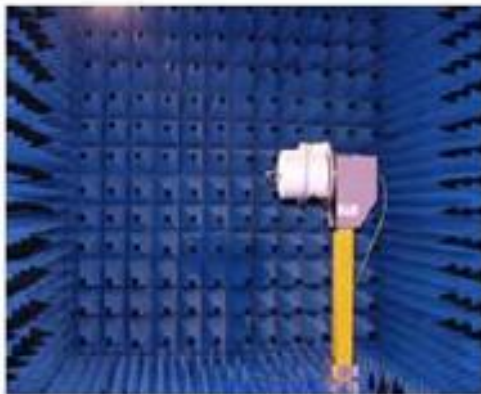
Dark room specifications: ETS-743

TD-SCDMA test equipment: StarPoint SP6010/Agilent 8960

LTE-TDD/FDD-SCDMA test equipment: StarPoint SP8011/CMW500

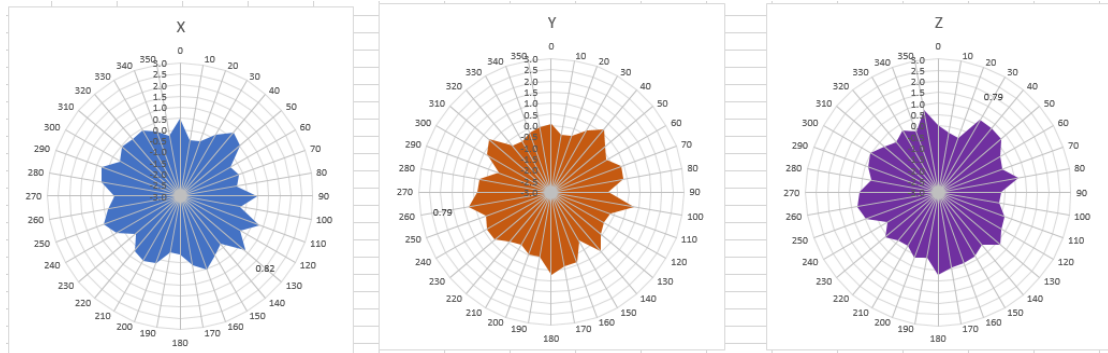
WCDMA/GSM/CDMA test equipment: Agilent 8960

Passive efficiency testing equipment: Agilent Technologies E5071B

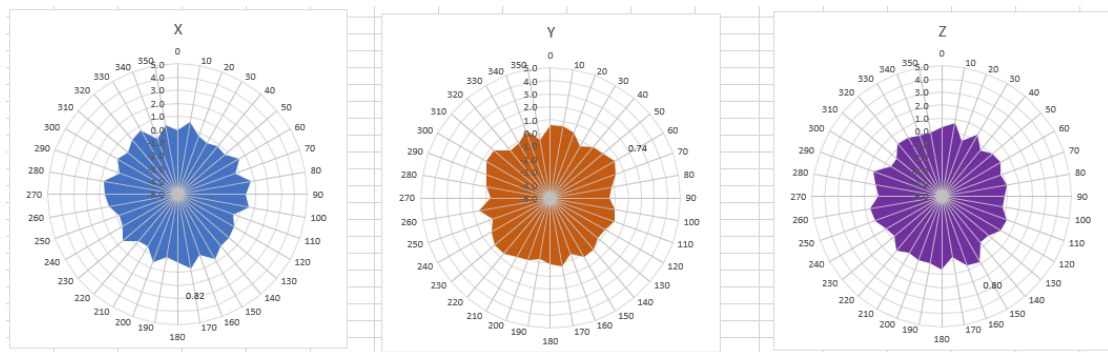


## 4 . Antenna Radiation Pattern

2400MHz



2450MHz



2500MHz

