

# Pet Tracker

## User Manual



Shenzhen Rontex Technology Co., Ltd

### ROTX Pet Tracker

WFBK40002



Thank you for purchasing the world's first true patented AI tracking safety pet tracker. It features our revolutionary AI smart tracking technology, which you can use anywhere in the world with your smartphone through our dedicated app.



This product shall not be used for unlawful tracking, consumers must use it for legal purposes only, and the manufacturer does not accept joint and several liability!!

### 1.Package Contents

- Pet Tracker (Main body)
- Magnetic Detacher



x1



x1

- USB-C Charging Cord
- Magnetic Pins



x1



x4

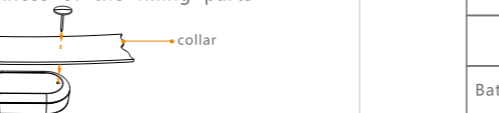
- SIM Card (subscription fees do apply)



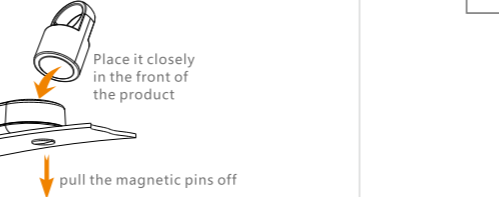
x1

### 2.Use instructions

**Installation:** As shown in the diagram below, pass the pins through the fixing part (collar or clothing), then align them with the magnetic detacher hole on the back of the product. Gently insert the magnetic pins and push them into place. The total thickness of the fixing parts should be  $\leq 5$  mm.



**Disassemble:** Place the magnetic core of the magnetic detacher close to the front of the product and gently pull the magnetic pins off.

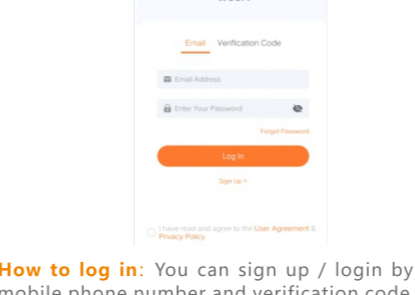


### 3.Technical Specifications

Model	WFBK40002
Working Voltage	3.85V; Quiescent Current<2MA Peak Current<3A
Input Voltage	DC 5V
IP	IP67
Battery Capacity	900mAh
Weight	50g
Size	72mm×37mm×19.5mm

### 4.App Download Channel and Login

- **iOS users** can download the app via searching “Wuufi Tracker” in App Store.
- **Android users** can download the app via the QR code (Figure 1) or search “Wuufi Tracker” in Google Play.



Insert USB-C Power Cord (provided) and fully charge the tracker before use.



**How to log in:** You can sign up / login by your mobile phone number and verification code or by email address and password.

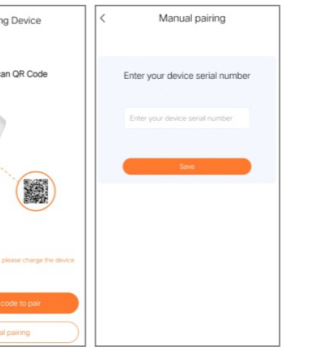
### 5.App Operation Instructions

#### Add Pets



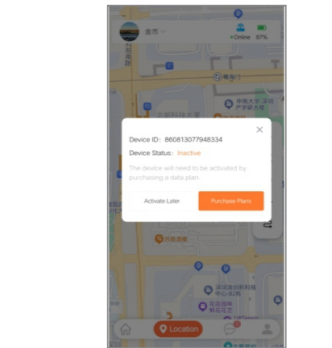
Click on the **Home** tab in the APP to fill in your pet's basic information and save it.

#### Pair the Device



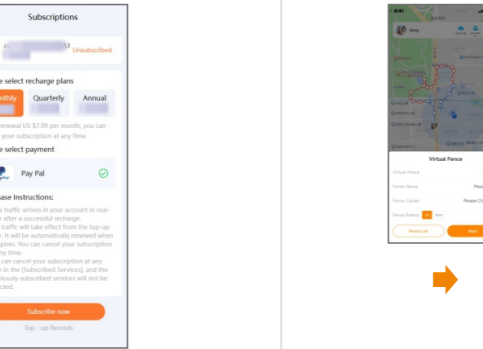
Scan the QR code on the pet tracker or enter the device serial number in the APP.

#### [Device Status] Pop-up



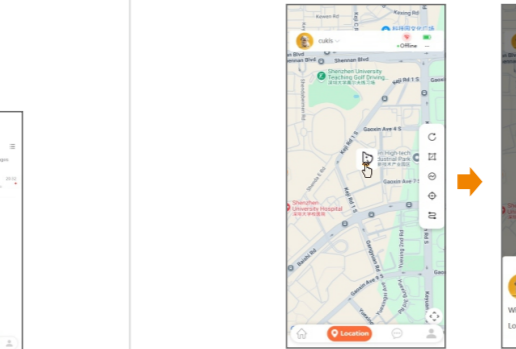
After the device is paired, **Device Status** is displayed in the pop-up window and you can click **Purchase Plans** or **Pairing Transfer** to activate your device.

## Subscriptions



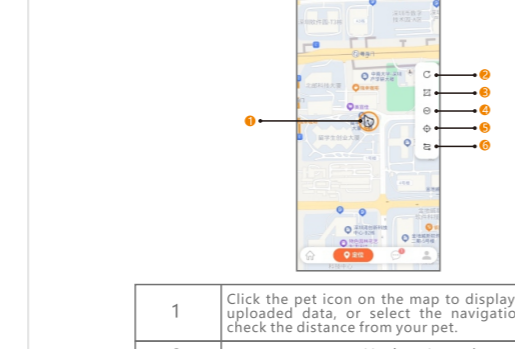
Go to the [My] page → Click [Data Plans] → Select a plan and complete the top-up. Once processed, the [Virtual Fence] and [Device Mode] will be activated.

## Virtual Fence and Device Mode



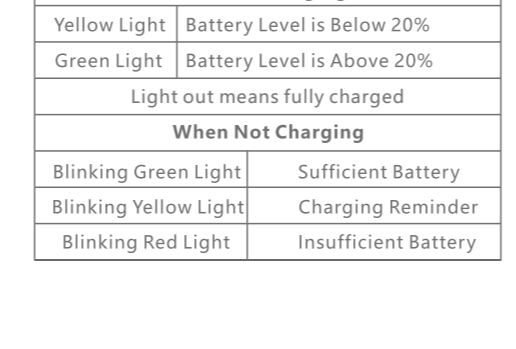
**Virtual Fence** and **Device Mode** functions are available after subscribing to one of the plans.

## Location



When clicking on your pet's avatar on the map, a pop-up window will show their current location and the last time they uploaded data. Click the **Navigation Icon** to go to Google Maps or Baidu Maps to see the distance between you and your pet.

## 6.APP Page Icon



1	Click the pet icon on the map to display the latest uploaded data, or select the navigation icon to check the distance from your pet.
2	Update Location
3	[Virtual Fence] Settings
4	[Device Mode] Selection
5	Mobile Phone Location
6	View Movement History

## 7.Product Indicator Light Guides

While Charging	
Yellow Light	Battery Level is Below 20%
Green Light	Battery Level is Above 20%
Light out means fully charged	
When Not Charging	
Blinking Green Light	Sufficient Battery
Blinking Yellow Light	Charging Reminder
Blinking Red Light	Insufficient Battery

## 8.Features

- Utilizing the low-power worldwide GPS cellular network and Wi-Fi, the tracker can locate the precise location of your pet.
- The tracker not only prevents your pet from getting lost but also monitors the activities and health status.
- On the App, the tracker can display the pet's location and movement track in real-time. You can view the last 3 days' movement histories, which is updated daily.
- Set your own virtual boundaries in your yard/neighborhood. Completely wireless, compared with traditional hardwired fences, there is no need to dig or run any wiring saving hundreds of dollars on installation. It promptly notifies you with an app alert if your pet escapes from the virtual boundary.
- IP67 weather and dust resistant.
- Long Battery Life - up to 15-30 days on a single charge in [Low Power Mode] and up to 7 days in [Normal Mode]. When operating in [Tracking Mode], the device should be recharged promptly after daily use to maintain subsequent operations.

## 9.Glossary

Glossary	Descriptions
Device Mode	Low Power / Normal / Tracking
Data Plans	New devices need to purchase [Subscriptions] before using the location service. If a device already has a subscription service, you can transfer the plan to the new device, and the original device's service is invalidated after transferring.
Transfer Pairing	Plans Type: Monthly   Quarterly   Annual, only PayPal is supported.
Unpair	The saved data will be retained if you choose [Unpair] or [Logout].
Delete	The subscribed plans will be retained if you delete your pet's information or unpair device.
Alarm	Type: Battery alarm / Fence alarm / Signal alarm / Offline alarm.
Management Center	You can add multiple pets, and sliding the pet avatar will display information for all pets added to the current account.

## 10.Caution

- Please review your owner's manual for safety and use instructions. Only use the original power source that came with this product. Improper use can result in serious injuries and / or damage to the product.
- Do not charge the tracker in wet situation.
- Keep the tracker away from heat sources.
- While our pet tracker Collars are designed for durability and daily wear, they may not be suitable for pets that tend to pull. We prioritize safety and encourage you to take extra care when determining the best fit for your pet. Never place the collar around your pet's neck that is too tight or too loose. Pets should always be supervised when using ROTX's pet tracking collars.
- Consumers who use our products acknowledge that Shenzhen Rontex Technology Co., Ltd shall not be liable or responsible for any loss or damage caused, directly or indirectly, by the products, information, or ideas contained in any of our marketing material, packaging, or website. In no event shall we be liable to you or any other party for incidental, punitive or consequential damages. It is the responsibility of the owner to comply with local safety standard when caring for pets.

## 11.Lithium Battery Warning

- Misusing or mishandling a lithium battery may cause fire or explosion, which can result in personal injury and property damage. You must read the safety warnings and resources on using and / or handling batteries. Even if properly handled, lithium batteries may still catch fire or explode. The purchaser acknowledges these risks and absolves Shenzhen Rontex Technology Co., Ltd of any responsibility for any damage these cells may cause.
- Keep lithium batteries away from metal objects. Do not store lithium batteries close to or on your person, in a pocket, purse, backpack, etc. without any protective box or plastic container.
- Lithium batteries must be properly disposed of, not in a fire or in the trash. Laws vary at the city, state and national level, and it is the buyer's responsibility to recycle lithium batteries properly. Many local governments and retail stores offer free recycling.
- Keep lithium batteries away from any heat source. Do not leave a battery inside a hot environment such as an automobile or in direct sunlight.
- Immediately stop charging, storing or using lithium batteries if they emit and unusual odor, feel hot, change color or shape or appear damaged.
- Avoid charging or storing lithium batteries at higher than 120°F (50°C). High temperatures might ignite the battery and cause a fire.
- Avoid charging lithium batteries below 32°F (0°C), as this will permanently reduce the battery capacity due to lithium plating.
- Do not charge lithium batteries overnight or without supervision.
- Keep lithium batteries away from Children.

## Warning

This device complies with part 15 of the FCC Rules. Operation is subject to the following two conditions: (1) This device may not cause harmful interference, and (2) this device must accept any interference received, including interference that may cause undesired operation.

This equipment has been tested and found to comply with the limits for a Class B digital device, pursuant to Part 15 of the FCC Rules. These limits are designed to provide reasonable protection against harmful interference in a residential installation. This equipment generates, uses and can radiate radio frequency energy and, if not installed and used in accordance with the instructions, may cause harmful interference to radio communications. However, there is no guarantee that interference will not occur in a particular installation. If this equipment does cause harmful interference to radio or television reception, which can be determined by turning the equipment off and on, the user is encouraged to try to correct the interference by one or more of the following measures:

- Reorient or relocate the receiving antenna.
- Increase the separation between the equipment and receiver.
- Connect the equipment into an outlet on a circuit different from that to which the receiver is connected.
- Consult the dealer or an experienced radio/TV technician for help.

Changes or modifications not expressly approved by the party responsible for compliance could void the user's authority to operate the equipment.

This equipment complies with FCC radiation exposure limits set forth for an uncontrolled environment.

This equipment should be installed and operated with minimum distance 20cm between the radiator and your body