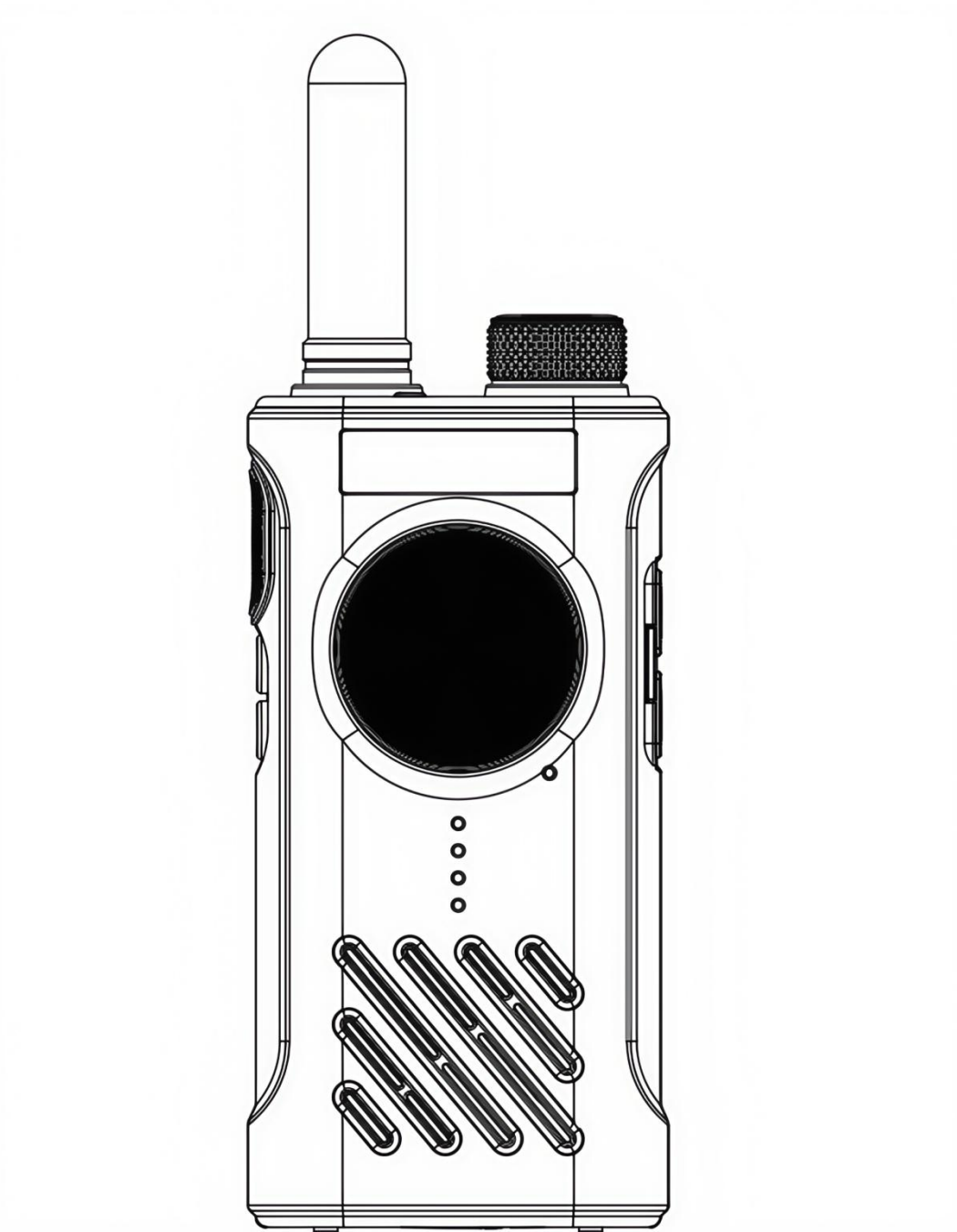
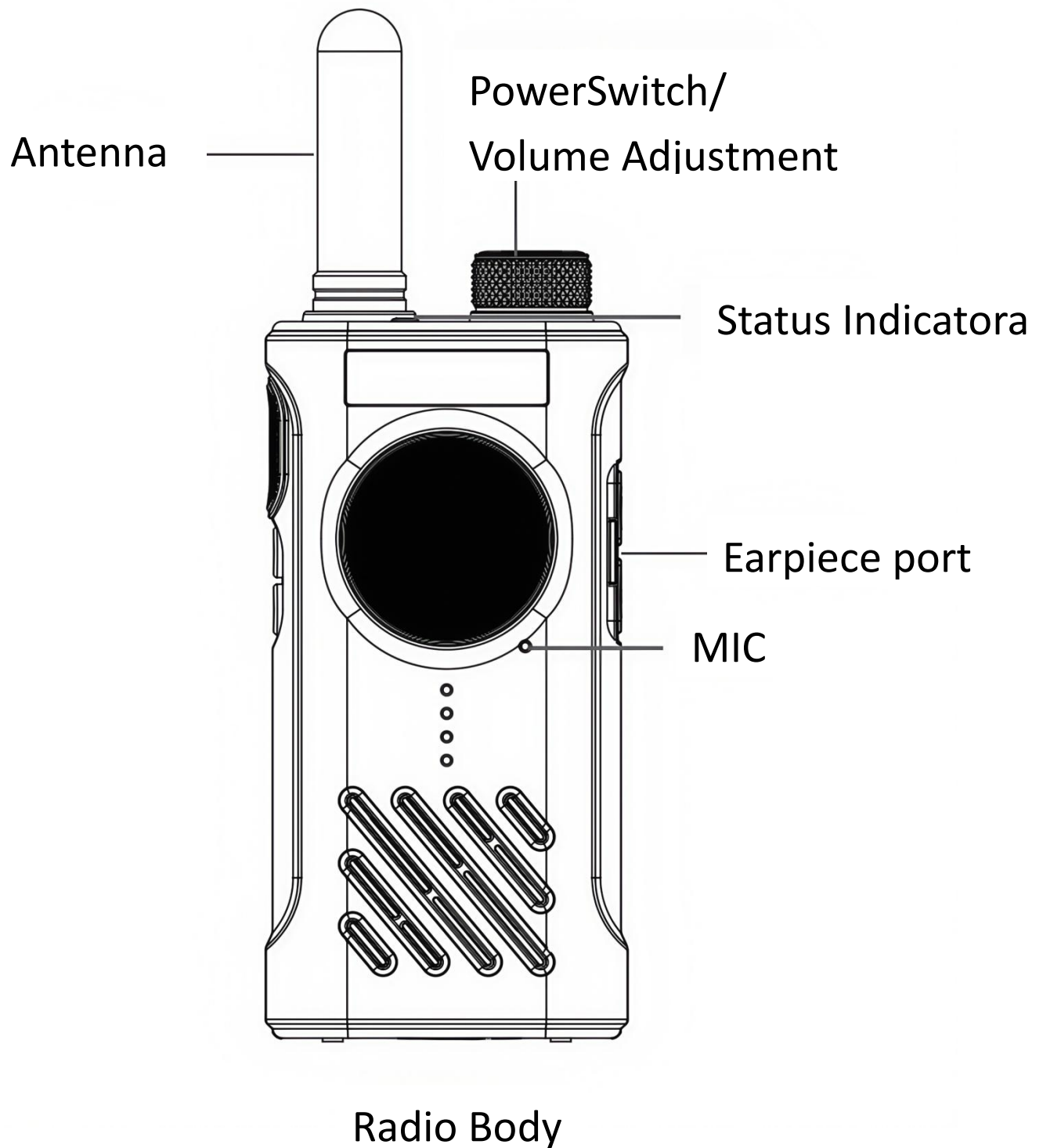


Walkie Talkie

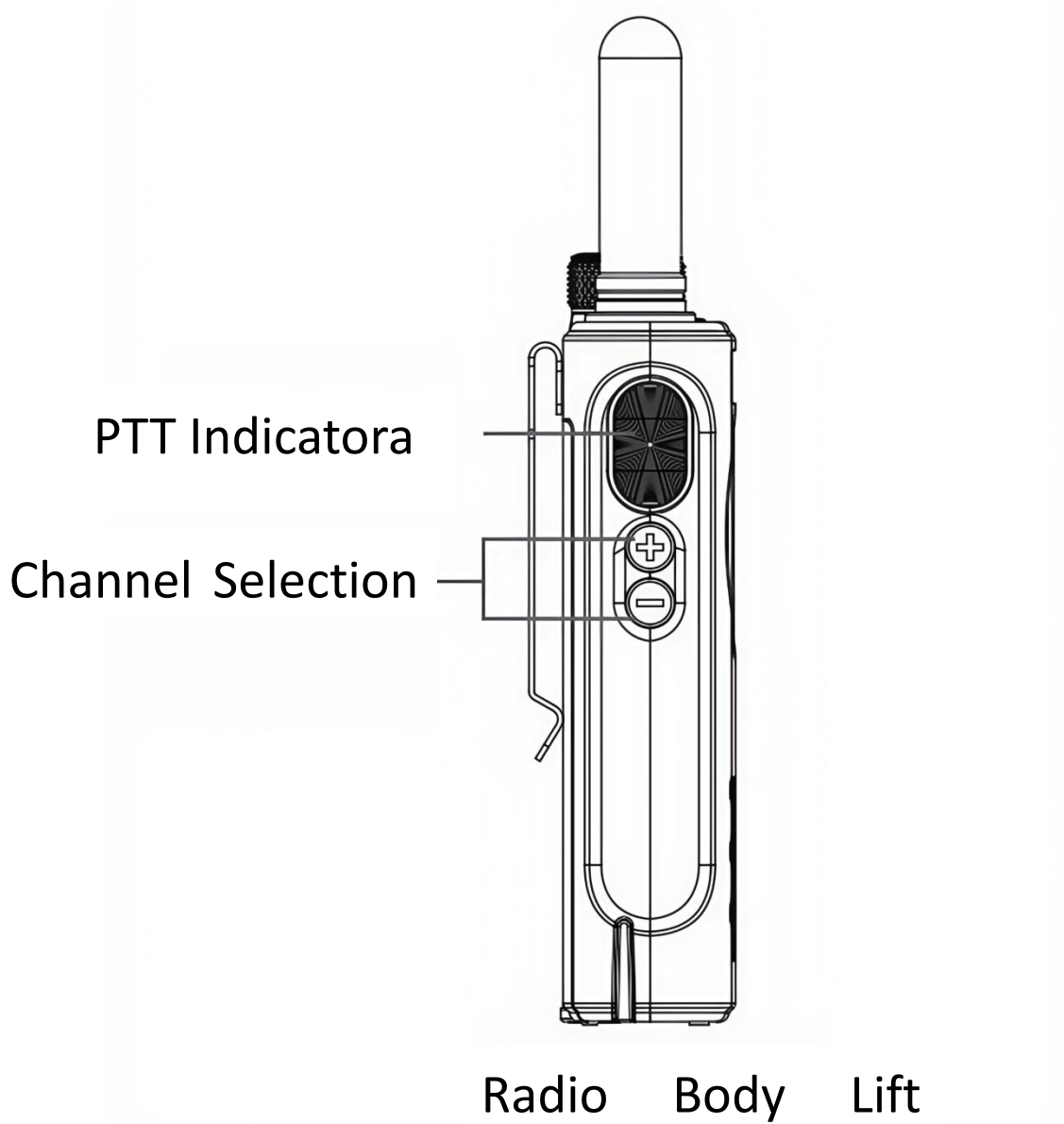


Please read this manual carefully before using the product and keep it in a safe place.

Presentation

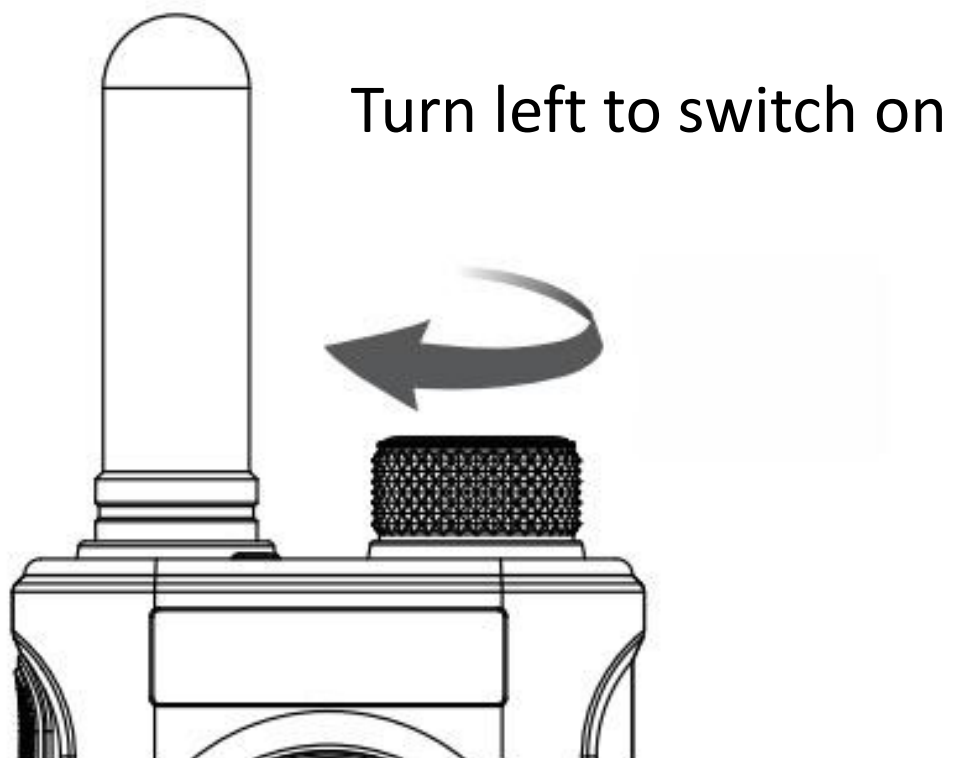


Presentation



Using

Power on



Channel Settings

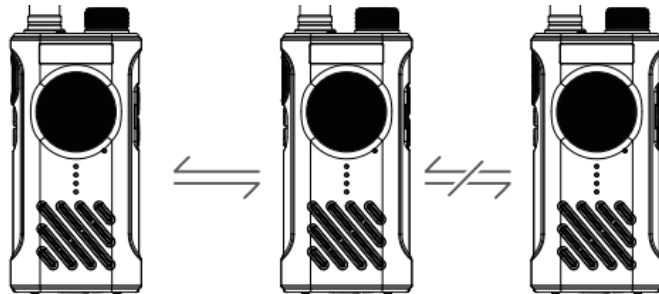
Notes:

Factory channels (H01~H22): Transmit power
462.5500-462.7250MHz: 32.18dBm
467.5625-467.7125MHz: 26.08dBm.

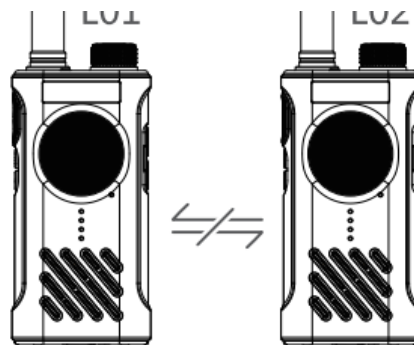
Using

Conversations

Switch on the radio and set it to the same channel to talk to each other.



Preset different channels with different frequencies in addition to different transmitting power, which cannot be intercommunicated;



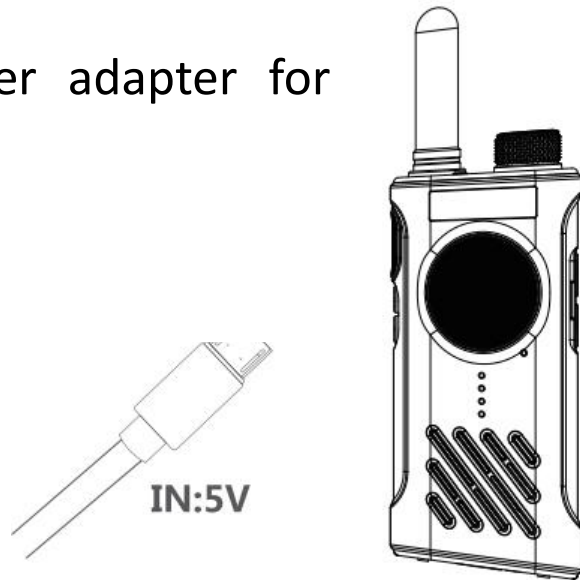
Bring the walkie-talkie to about 3-8cm in front of you and start speaking while holding down the PTT button to send voice in real time.



Using

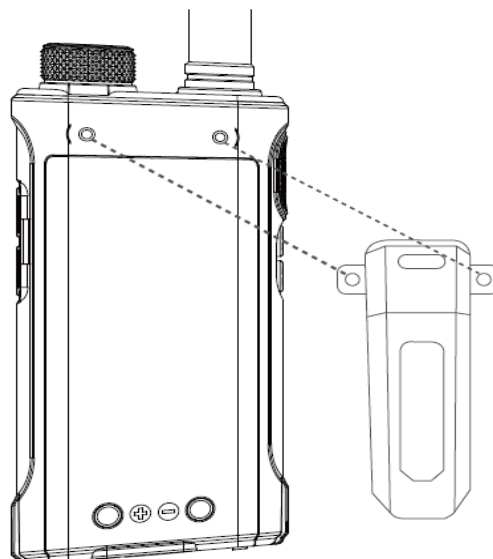
Charging

Note: Please use 5V power adapter for charging.



Belt Clip Installation

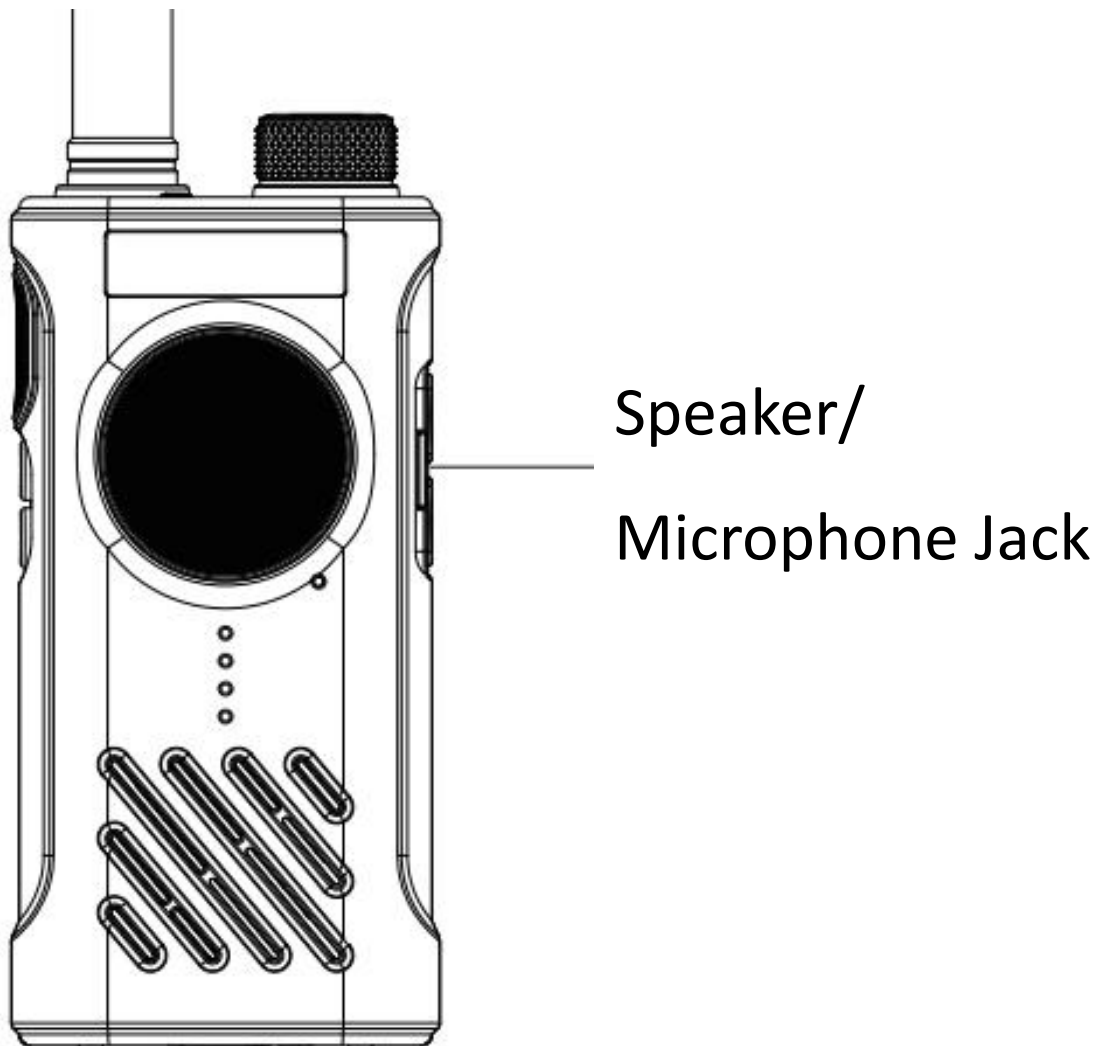
If necessary, you can lock the supplied belt clip into the silk hole on the back of the walkie-talkie to make it easier to carry. To remove the belt clip, you only need to unscrew the two screws.



Using

Installing an external speaker/microphone

Lift the rubber plug and insert the speaker/microphone cable into the speaker/microphone jack on the top of the unit at.



Basic Operations

Switching the power supply.

1, power on: clockwise rotation of the ‘power / volume switch’ control knob to open the walkie-talkie power supply, and at the same time hear a ‘da’ sound, and then hear a series of sharp tone, and then broadcast ‘power on Then you will hear a series of sharp beeps and then broadcast the ‘switch on’ language tone, and finally broadcast the current corresponding channel.

2、Shut down: Press the counterclockwise direction to rotate the ‘power/volume switch’ control knob, until you hear a ‘ta-da’ sound, that is, the intercom has been turned off the power.

Volume Adjustment.

Turn the ‘Power/Volume Switch’ control knob clockwise to increase the volume; turn the ‘Power/Volume Switch’ control knob counterclockwise to decrease the volume.

Squelch Function:

Press the ‘+’ button for 2 seconds, squelch is on.

Channel Selection:

Press ‘+’ button for channel plus, press ‘_’ button for channel minus.

Conversations:

Press and hold the [PTT] key to transmit indicator light on, and speak in normal tone, release the [PTT] key after the call is finished, the unit will switch to to receive. Please keep the distance between your mouth and the intercom 3 to 8cm when speaking.

Basic Operations

Low Battery Warning:

Low battery warning appears when the battery needs to be recharged or replaced.

If you use the walkie-talkie when the battery is low, every 30 seconds you will hear a series of beeps and the Chinese voice prompts 'Please charge' or 'Tick', and the English voice prompts 'Please change battery', and the LED indicator flashes red, prompting the user to please charge or replace the battery.

Battery power saving

If activated by the dealer, the battery power save function reduces power consumption when no signal is received or no operation is performed (no button is pressed, no channel switch is rotated).

The battery power save function is switched on when the channel is not busy and when no operation has been performed for 10 seconds.

When a signal is received or an operation is performed, the battery power saving function is switched off.

Scrambling and spreading

This unit has the function of scrambling and spreading, which can be achieved by selecting None/Scrambling/Spreading as an optional function in each channel of the frequency writing software.

Basic Operations

Special sub-tone function

This machine has special sub-tone function, through the frequency writing software frequency hopping item 'on' or 'off' to achieve the special sub-tone function.

Flashlights Function

This machine has a torch simple lighting function, long press the '-' key for 3 seconds for torch long open, and then press the '-' key for 3 seconds for the SOS electricity open, and then long press the '-' key for 3 seconds for the The torch is switched off by pressing '-' button for 3 seconds.

Channel lock function

Long press the '+' key for 10 seconds, hear the 'tick' sound, channel lock open; and then long press the '+' key for 10 seconds to hear the 'tick' 'tick' 'tick' sound. 'Tick' sound, the channel lock is lifted.

One-key frequency pairing

One-key frequency pairing operation instructions

A machine tuned in the first channel, press and hold the squelch key to boot into the one-key frequency pairing function, into the frequency pairing blue light will flash slowly; B machine transmit to the A machine, the A machine frequency pairing to the signal will be issued 'beep', the blue into a fast flash, that frequency pairing success, and at the same time to save the current frequency, channel conversion and then crack the next frequency.

Basic Operations

Note: After the frequency pairing is completed, please reboot the machine to use, otherwise the machine will be very power-consuming.

Wireless Cloning is a function that allows you to easily copy all channels from one radio (the master) to all other radios within range without the use of wires or cables.

Warnings

Because walkie-talkie transmissions may affect electronic or medical devices, do not use this walkie-talkie in the following scenarios

In hospitals, around people with pacemakers, or near other medical devices.

Explosive locations such as petrol stations (environments with flammable gases, dust, metal powders, granular powders, etc.); and

On board aircraft (and near other electronic equipment that is susceptible to interference).

Any other places where restrictions or warnings regarding radio equipment are posted.

Do not operate this walkie-talkie in violation of the following regulations, as this may cause equipment failure or even personal injury.

Do not apply voltages other than those specified to the power supply or charging port of this walkie-talkie.

Do not disassemble or modify this walkie-talkie.

Do not immerse the walkie-talkie in water.

Do not strike or throw the intercom.

If this walkie-talkie has the following abnormalities, please stop charging or using it immediately, turn off the power of the walkie-talkie, and contact the after-sales service department.

Warnings

If the main unit or charger emits smoke or odour during charging, please turn off the walkie-talkie immediately and unplug it from the power supply to prevent it from heating, burning, fire or even explosion.

Other Precautions

Do not place this walkie-talkie in direct sunlight or near a heater.

Do not operate this walkie-talkie near a TV or radio (radio interference will occur with TV or radio); Do not use this walkie-talkie in crowded places to avoid affecting others or damaging the antenna.

Basic Information

Dimensions:154x55x27mm(including antenna)

Net weight:137g

Battery Type:Li-ion Battery

Operating Temperature:-20°C~50°C

Charging Temperature:0°C~45°C

Interface Type:Type C

Rated Voltage:3.7V

Transmitting power:

462.5500-462.7250MHz: 32.18dBm

467.5625-467.7125MHz: 26.08dBm

Frequency: FRS

Receiving Sensitivity:-122dBm(12dB SINAD)

Subtone Code

Total 121 groups, including 38 analogue sub-tone codes and 83 digital sub-tone codes.

Hazardous substances in electrical and electronic products

Names and contents of hazardous substances in electronic products

| Part Name | Harmful substances | | | | | |
|--------------|--------------------|----|----|--------|-----|------|
| | Pb | Hg | Cd | Cr(VI) | PBB | PBDE |
| Radio body | × | O | O | O | O | O |
| Battery | O | O | O | O | O | O |

This table is compiled according to SJ/T 11364.

O: Indicates that the content of the hazardous substance in all homogeneous materials of the part is below the limit requirement specified in GB/T26572.

X: Indicates that the content of the hazardous substance in at least one homogeneous material of the part exceeds the limit specified in GB/T26572.

Environmental protection use term description

The term of environmental protection refers to the period of time when the toxic and harmful substances or elements contained in the walkie-talkie and its accessory products will not be leaked under normal conditions of use, and when the users of electronic information products will not use the products in such a way that they will not cause serious pollution of the environment or serious damage to their persons and properties.

Walkie Talkie Warranty Policy (This clause is only applicable to Mainland China)

Warranty policy

Walkie-talkie products after-sales service is strictly based on the 'Law of the People's Republic of China on the Protection of Consumers' Rights and Interests' "Product Quality Law of the People's Republic of China" to implement the after-sales three packages of services, the service content is as follows: 1. 7 days from the next day after you sign for the receipt of the product, the product has a "Product Performance Failure Table" of the performance failures listed by the after-sales service centre to determine the test, you can enjoy the return of goods free of charge or replacement services; 2. Within 8 to 15 days from the next day, this product appears 'Product Performance Failure Table' listed performance failure, determined by the after-sales service centre testing, free of charge to enjoy the exchange or repair service 3. 12 months from the next day after your signature, this product appears 'Product Performance Failure Table' listed performance failure, determined by the after-sales service centre testing, free of charge to enjoy the repair service.

Walkie Talkie Warranty Policy

(This clause is only applicable to Mainland China)

Product Performance Troubleshooting

| Name | Performance Failure |
|-------|--|
| RADIO | Product does not charge or does not switch on normally after charging. |
| | Functional buttons of the device cannot be used normally. |
| | The speaker is silent and the display cannot be shown normally. |
| | The same channel, the effective distance can not be normal intercommunication. |

Non-Warranty Policy

The following conditions (but not limited to the following) are covered by non-warranty and need to be repaired at a cost.

Failure or damage caused by private dismantling, repair, modification, misuse, abuse, accidental wave entry, use of non-original parts by personnel not authorised by the company.

Has exceeded the validity period of the three packages.

Walkie Talkie Warranty Policy

Damage caused by force majeure.

Failure to comply with the performance failure listed in the ‘Product Performance Failure Table’ .

Due to man-made reasons for the product and its accessories to produce ‘product performance failure table’ listed in the performance failure not in accordance with the ‘walkie-talkie instruction manual’ requirements for the use, maintenance and adjustment of any damage; - malicious damage to the content of the warranty card, the body of the information, including fuzzy damage, self-tear, change, etc. - other non-product design, manufacturing, quality and other issues caused by the failure and damage.

Remarks

The illustrations of the product, accessories, user interface and other illustrations in the manual are schematic diagrams for reference only. Due to product updates and upgrades, there may be slight differences between the actual product and the schematic diagram, please refer to the actual product.

Product Warranty Card

| | |
|------------------------|---------------------------------|
| Sales Information | Distributor (stamped validity): |
| | Address: |
| | Contact Tel: |
| Product Information | Model No: |
| | Serial No: |
| | Date of purchase: |
| User Information | User Name: |
| | Contact No: |
| | Address: |

Important Notes.

This warranty card serves as an important proof for end users to enjoy warranty service, please keep it properly.

Warranty Notes.

1. The warranty period of this product is counted from the date of sale (based on the date on the sales invoice). Host warranty 12 months accessories warranty 6 months.
2. During the warranty period, the logo or serial number of the product shall not be torn.
3. This warranty card shall be valid only if it is stamped and filled in completely by the authorised dealer.

Belong to one of the following conditions, will not enjoy the free warranty service of the product, need to charge for repair: 1. Normal wear and tear; 2.

2. Exceeding the product warranty period.
3. Not in accordance with the requirements of the product instructions for use, maintenance, storage and damage caused.
4. Damage caused by unauthorised maintenance, disassembly, etc..
5. Without a valid warranty card and a valid invoice (except to prove that the product in the warranty period); 6. Unauthorised alteration of the product warranty card.
7. Warranty card on the product model or serial number

FCC Statement:

Any Changes or modifications not expressly approved by the party responsible for compliance could void the user's authority to operate the equipment. This device complies with part 15 of the FCC Rules. Operation is subject to the following two conditions.

- (1) This device may not cause harmful interference, and
- (2) This device must accept any interference received, including interference that may cause undesired operation.

SAR tests are conducted using standard operating positions accepted by FCC with the device transmitting at its highest certified power level in all tested frequency bands, although the SAR is determined at the highest certified power level, the actual SAR level of the device while operating can be well below the maximum value. Before a new model is available for sale to the public, it must be tested and certified to the FCC that it does not exceed the exposure limit established by the FCC. Tests for each product are performed in positions and locations as required by the FCC.

For body worn operation, this device has been tested and meets the FCC RF exposure guidelines when used with and accessory

designated for this product or when used with and accessory that contains no metall.

To maintain compliance with FCC RF exposure guidelines hold the transmitter and antenna at least 1 inch (2.5 centimeters) from your face and speak in a normal voice, with the antenna pointed up and away from the face.

The equipment complies with FCC radiation exposure limits set forth for an uncontrolled environment. In order to comply with the FCC RF exposure requirement, the antenna installation must comply with following:

Users must be fully aware of the hazards of the exposure and able to exercise control over their RF exposure to qualify for the higher Exposure limits.

Your wireless hand-held portable transceiver contains a low power transmitter. This product sends out radio frequency (RF) signals when the Push-to-Talk(PTT) button is pressed.

The device is authorized to operate at a duty factor not to exceed 50%.

Note: This equipment has been tested and found to comply with the limits for a Class B digital device, pursuant to part 15 of the FCC Rules. These limits are designed to provide reasonable protection against harmful interference in a residential

installation. This equipment generates, uses and can radiate radio frequency energy and, if not installed and used in accordance with the instructions, may cause harmful interference to radio communications. However, there is no guarantee that interference will not occur in a particular installation. If this equipment does cause harmful interference to radio or television reception, which can be determined by turning the equipment off and on, the user is encouraged to try to correct the interference by one or more of the following measures:

- Reorient or relocate the receiving antenna.
- Increase the separation between the equipment and receiver.
- Connect the equipment into an outlet on a circuit different from that to which the receiver is connected.
- Consult the dealer or an experienced radio/TV technician for help.