

1. Antenna Description:

Antenna type	PIFA antenna
Model	61010W
Frequency range	2400-2500MHz
Manufacturer	Zhongshan Anjielo Smart Technology Co., Ltd
Address	Room 803, Building 8, No. 1, Shatan South Road, Tanzhou Town, Zhongshan City, Guangdong Province, China 528467
ANT Peak Gain	1.55 dBi

2. Antenna Photo:

Length:48.32mm
Width:7.47mm



3. Test Equipment & Conditions

3.1 Test instrument

VSWR is tested using Agilent E5071B connected to a hand mechanism, and the status is free space.

3.2 Test environment and methods

Dark room specifications: ETS-743

TD-SCDMA test equipment: StarPoint SP6010/Agilent 8960

LTE-TDD/FDD-SCDMA test equipment: StarPoint SP8011/CMW500

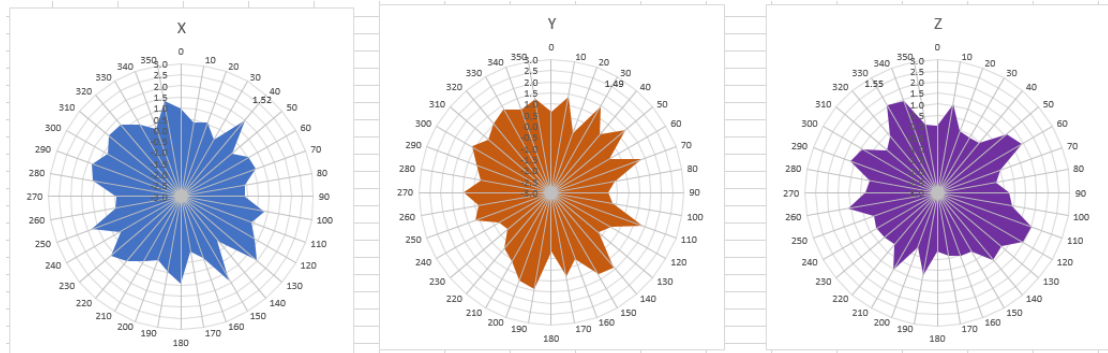
WCDMA/GSM/CDMA test equipment: Agilent 8960

Passive efficiency testing equipment: Agilent Technologies E5071B

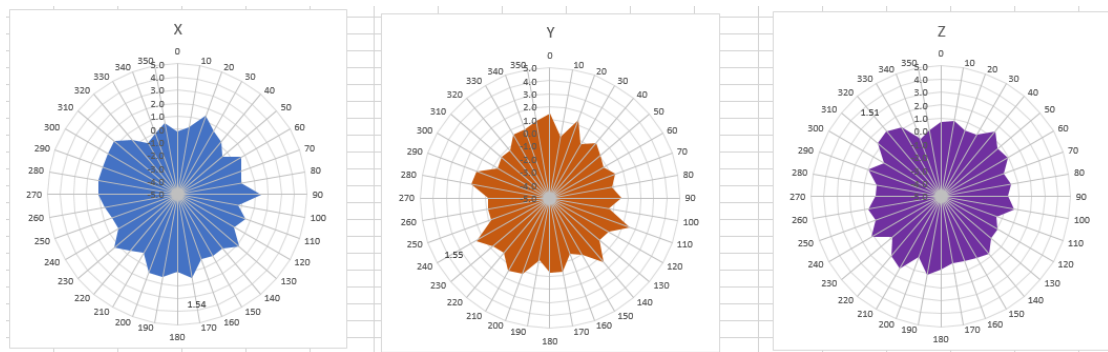


4 . Antenna Radiation Pattern

2400MHz



2450MHz



2500MHz

