

PLEASE READ
THE PRODUCT MANUAL
BEFORE USE

CYBERSKIN®

The Warrior Sucking Male Masturbators User Manual



Thank you for using this product.
Please read this user manual carefully before use.

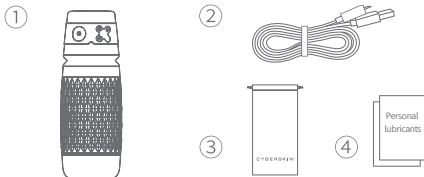
Product Description:

The Warrior Automatic Male Masturbators is a multi-functional adult toy that can provide a variety of high-level and interesting means of orgasm. It has a standard soft elastomer for comfortable use.

Precautions:

- ① Volume tips: This product produces a sound of less than 60 db (depending on the mode in use). Recommended for use in a private environment.
- ② This product has a variety of play and function modes. It is recommended to try different modes, looking for your play or mode. If you are not satisfied with the automatic mode, the manual mode is recommended.

Packing List

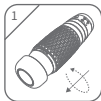


- ① Masturbator cup
- ② USB Type-C Charging Cable
- ③ Portable Travel Bag
- ④ Four bags of water-based personal lubricants

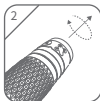
※No charger is provided for this product.
Please use a smart phone charger.

Disassembly and installation method of soft elastomer

Disassembly steps



1. Turn counter clockwise to open the cup lid.



2. Rotate clockwise to open the head.



3. Pull out the head.



4. Take out the soft elastomer.

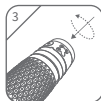
Installation steps



1.Place the elastomer in the cup and align the groove with the indicator sticker.



2.Align the head motor with the hole in the soft elastomer motor.



3. Turn counter clockwise to fix the head once the motor is fully inserted into the hole.



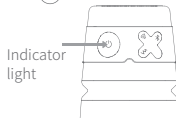
4.Turn clockwise to secure the cup cover.

Charging method

①



②



① [Charging instructions] Insert the USB Type-C cable into the charging port behind the head.

②[Indicator light prompt] The indicator light is in breathing mode when charging. When it is fully charged, the indicator light remains on, and when the power is low, the indicator light flashes.

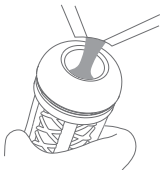
Charging precautions:

※Connect to the Type-C cable after power off only.

※Keep your hands dry when plugging/unplugging the cable.

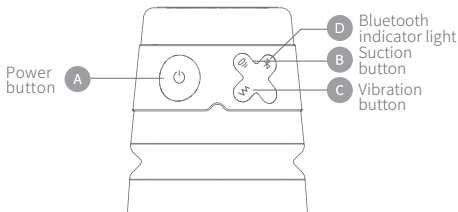
3 ※Charge the battery for 1-2 hours before first use.

User guidance



※Please note that before use, be sure to add lubricant to the inlet of the soft elastomers of the cup, as shown in the figure on the left. The absence of lubricant, will cause problems, and damage to your skin and the machine.

※Please buy lubricants on a compliant website for future use.



Power Button A



Press and hold this Button A for 2 seconds to turn on/off the cup. Press and hold this button for 2 seconds to turn on the cup; the power light remains on, the vibration and suction functions work for 1 second, then it enters a standby state. After 20 minutes of standby, the cup switches off automatically. While the vibration or sucking function operate, press the power button, the corresponding function will pause, and the power light will flash one time. Press the button again; the corresponding function will be restored, and the light will flash one time.

Notes on the operation function buttons

Suction Button B



Confirm that the appliance is switched on, press button B to activate the first working mode, and the indicator light remains on. Press the button again, the suction mode changes, and the light flashes once. There are three suction modes:

- a) Gentle suction
- b) Rhythmic suction
- c) Deep throat suction

Press and hold the Button B for 2 seconds to stop this function, and the light will turn off.

Vibration Button C



Confirm that the power supply is on, and press the Button C to activate the first working mode and the light remains on. Press this button again; the vibration mode will change, and the light will flash one time. There are four vibration modes:

- a) Soft vibration
- b) Strong vibration
- c) Pulse vibration
- d) Fluctuating vibration

Press and hold the vibration key for 2 seconds to stop the function.

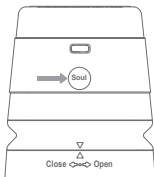
Bluetooth indicator light D



a) Turn on the device, enable Bluetooth broadcasting, and wait for the App to connect.

b) If the App is not connected within 5 minutes after turning on the device, the Bluetooth broadcasting will be turned off. In this case, to connect the App, you need to turn off the device, turn it on again, and restart the Bluetooth broadcasting status.

c) When the device is turned off, the Bluetooth broadcasting will be turned off.



One Button Climax Mode Explanation

Press this one button climax button, and the manual climax mode will activate. At the same time, the vibration and suction functions will be in the strongest state, and all the indicator lights will be on. Press the keys as you like to enjoy a wonderful and amazing experience.

Note: When the power is turned on in any current mode, press this button to switch to the manual climax mode. Release the button to enter the pause mode.

Cleaning and storage



Product electronics

The head electronic components is the core electronic part, and it is not waterproof. Do not wash it with water or wipe it with a wet towel. In order to ensure the service life of this product, store it in a cool and dry place. Do not put this product in a place that is too wet or too hot.

Soft elastomer



1) You may take it out of the cup and wash its interior directly under the tap.



2) Do not clean it with cleaning liquid and disinfectant containing alcohol or corrosive substances. Please clean it with skin-care shower gel and then wash it with lukewarm water below 40°C.



3) Having cleaned off the lubricant and residue, wipe off any water stains with a clean, soft cloth. Please put it flat in a cool and ventilated place.



4) Do not dry it with a hair dryer or an air heater to avoid irreparable damage. After it is thoroughly dried, apply special care powder or baby powder to the surface to ensure the product remains dry and smooth for a long time. Then put it back into the cup.

Soft elastomer



5) Do not store the product in direct sunlight or in high temperature conditions (e.g. a car parked outdoors exposed to high temperatures) to avoid deterioration or deformation of product materials.

Note: The soft elastomer is a consumable. It is recommended to be replaced after 60 times of use or every four months (the service life varies with the method of use). If the it is cracked, please stop using it immediately in order to prevent liquid from leaking into the electronics and causing damage. To replace the elastomer, please visit the web page of this product to select the one you desire.

Recycling instructions for the product and components

For the sake of environmental protection, after this product, or any of its components become unserviceable, you are responsible (as a consumer) for separating this product or any of its components from household garbage and sending it to a qualified recycling site where it will be sorted, disassembled, recycled, and reused according to relevant national regulations.

- ※The battery must be removed from the device before it is thrown away.
- ※Please confirm that the device is powered off before the battery is removed.
- ※Dispose of the battery in a safe manner.

Precautions:

Intended users:

- This product is only suitable for adults 18 years of age and older. To avoid contagious diseases, please keep this product for personal use only.
- Please stop using this product if you are feeling unwell.
- Please do not use the product if you are using any medical electronics (such as pacemakers), pregnant, or may suffer physical discomfort.

Storage:

- Please turn off the power of the product and store it properly if it is not to be used for a long time.
- Please do not place the product in the sun or store it in a high temperature environment to avoid the possibility of malfunction, heat or fire, do not store the product in the sun or in a hot environment (for example, in a car parked outdoors and exposed to high temperatures).
- Please do not remove the electronic components part of the product, removal may cause damage to the product or endanger your safety.
- Please do not dry the product with any external heating equipment, such as a microwave oven, hair dryer, etc.
- When carrying the product with you in a backpack or briefcase, keep it in the original storage bag or your storage bag to avoid unnecessary scratches or contact with germs.

Resetting of Product:

- If the program is malfunctioning or if a function becomes unusable, please turn the product off, charge it, and restart it to recover the function.

Specifications

Product name: The Warrior Sucking Male Masturbators

Product model: The Warrior-BT

Product dimension: $\phi 83 \times 235 \text{mm}$

Product material: ABS, TPE, Silicone

Total weight: 785g

Built-in power supply: Lithium battery 3.7V 520mAh

Rated Voltage: 3.7V ===

Rated Power: 3.5W

Charging time: Approx. 1-2 hours

Duration: About 1h (depending on the use mode)

※ The product electronics are not waterproof, but the soft elastomer is washable.

After-sales information

※ We guarantee one year warranty for the whole machine

※ After Sales Service: Please remember your order number and product name, then contact us via email address.

※ If you have any questions in the process of using the service, please contact us by E-Mail.

※ We will give you a satisfactory answer within 24 hours.

※ sales@cyberskin.com

FCC Warning

This device complies with Part 15 of the FCC Rules. Operation is subject to the following two conditions:

(1) This device may not cause harmful interference, and (2) this device must accept any interference received, including interference that may cause undesired operation.

NOTE 1: This equipment has been tested and found to comply with the limits for a Class B digital device, pursuant to part 15 of the FCC Rules. These limits are designed to provide reasonable protection against harmful interference in a residential installation. This equipment generates, uses and can radiate radio frequency energy and, if not installed and used in accordance with the instructions, may cause harmful interference to radio communications. However, there is no guarantee that interference will not occur in a particular installation. If this equipment does cause harmful interference to radio or television reception, which can be determined by turning the equipment off and on, the user is encouraged to try to correct the interference by one or more of the following measures:

- Reorient or relocate the receiving antenna.
- Increase the separation between the equipment and receiver.
- Connect the equipment into an outlet on a circuit different from that to which the receiver is connected.
- Consult the dealer or an experienced radio/TV technician for help.

NOTE 2: Any changes or modifications to this unit not expressly approved by the party responsible for compliance could void the user's authority to operate the equipment.

The device has been evaluated to meet general RF exposure requirement. The device can be used in portable exposure condition without restriction.

MADE IN CHINA