

PLEASE READ
THE PRODUCT MANUAL
BEFORE USE

CYBERSKIN®

The Titan Masturbator

User Manual



Thank you for using this product.
Please read this user manual carefully before use.

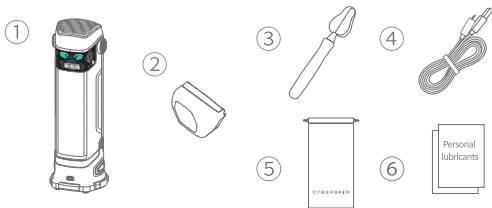
Product Description:

The Titan Masturbator is a multi-functional adult toy. This feature allows you to experience continuous pleasure and the anticipation of taking on the next challenge. The massaging touch feature that spreads down from the head of the penis brings indescribable stimulation for orgasmic pleasure.

Precautions:

- ①Noise reminder: the noise during use is less than 60 decibels (the volume level varies depending on the mode of use), and it is recommended to use it in a private environment.
- ②This product has a variety of play and function modes, it is recommended to try more different modes to find the right one for you.
- ③Please be sure to use this product with a lubricant, do not use it directly to avoid injury.

Packing List



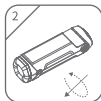
- ① Masturbation Cup ② Masturbation Cup Lid
③ Sleeve Cleaning Sponge Stick ④ USB Type-C Charging Cable
⑤ Portable Travel Bag ⑥ Four bags of water-based personal lubricants

Disassembly and installation method of soft elastomer

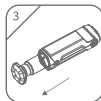
Disassembly Steps



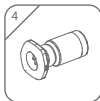
Remove the base.
or remove the lid.



Pinch the soft rubber
retaining ring at the
logo, twist open
counterclockwise.

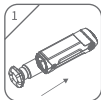


Pull the soft rubber
out of the cup, bottom
magnetic release.

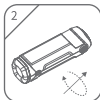


Disassembled
and finished.

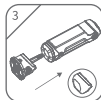
Installation Steps



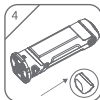
Place the soft rubber into the cup, once a magnetic sound is heard the soft rubber is in place.



Pinch the soft rubber retaining ring at the logo, tighten clockwise.



Attach the base or attach the lid.



The installation is complete.

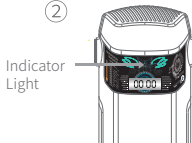
Charging Method

①



Charging Port

②



① [The method of charging] Insert the USB Type-C charging cable into the charging port located at the back of the head.

② [Explanation of power display] Turn on the power, the indicator white light is always on; When the battery is low, the indicator light blinks red 10 seconds, then power off; White breathing light indicates when charging, white light illuminates when fully charged; Red color for low battery.

Charging Precautions:

※Connect to the Type-C cable after power off only.

※Keep your hands dry when plugging/unplugging the cable.

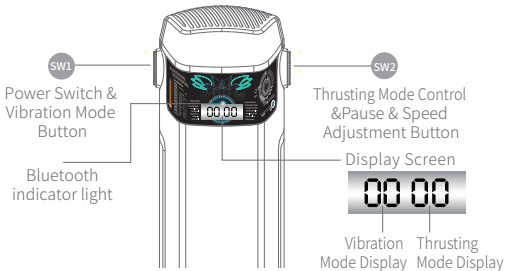
3 ※Charge the battery for 2-3 hours before first use.

User Guidance



※Please note that before using the masturbator cup, follow the illustration on the left to apply an appropriate amount of lubricant to the entrance of the masturbator cup's soft rubber to ensure comfortable use.

※We recommend purchasing lubricant from official websites for future use.



Button

SW1



【Power Control】

Press the SW1 button for 2 seconds to control the power on/off; After powering on, the display lights up to show, while automatically pumping two times to randomly enter the standby state. After 15 minutes of standby, the masturbator cup will turn off automatically.

Notes on the operation function buttons

Button

SW1——



【Introduction Of Vibration Mode】

Under power-on condition, click SW1 button to change the vibration mode. There are 10 vibration modes and two digits on the left side of the display show 0 - 10 vibration modes. Power on into vibration mode initially at 0. Double-click SW1 to pause the vibration, then click to turn it on, the vibration mode will automatically be the previous mode.

[Ten Vibration Modes]

- | | |
|---------------------------------|---|
| a) Medium intensity vibration | f) Long-shock cyclic vibration |
| b) High intensity vibration | g) Long and short cyclic vibration |
| c) Cyclic vibration | h) Medium-frequency cyclic vibration |
| d) Pulsating vibration | i) High-frequency cyclic vibration |
| e) Short-shock cyclic vibration | j) Medium and high frequency cyclic vibration |

Button

SW2——



【Introduction Of Thrusting Mode】

a) Under power-on condition, press SW2 briefly to open the thrusting mode conversion. A total of 10 thrusting modes, two digits on the right side of the display show 0 - 10 thrusting modes. Short press to switch the modes, double-press to pause the thrusting, short press for start.

b) The thrusting and vibration mode button's functions can only be realized when the SW1 is pressed and held for 2 seconds to activate power on or in standby mode. Thrusting and vibration mode buttons cycle through one of 10 modes.

Button SW2

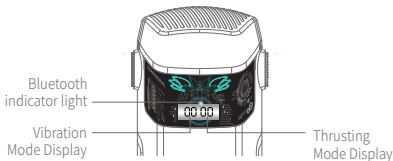


【Thrusting speed】

After the thrusting start, the initial speed is 3, turning clockwise SW2, the thrusting speed rises to the highest value of 15, and turning counterclockwise SW2, the thrusting mode decelerates to the lowest value set by the machine.

【Ten Thrusting Modes】

- | | |
|---------------------------|---------------------------|
| a) Full-stroke thrusting | f) Accelerating thrusting |
| b) Short-pulse thrusting | g) Brake thrusting |
| c) Long-pulse thrusting | h) Gentle thrusting |
| d) Short-stroke thrusting | i) Charming thrusting |
| e) Curved thrusting | j) Impact thrusting |



【Bluetooth indicator light】

- After the device is powered on, Bluetooth is enabled by default, and the Bluetooth indicator light flashes rapidly;
- When a Bluetooth connection is established, the Bluetooth indicator light remains steadily lit.
- If the App is not connected within 5 minutes after turning on the device, the Bluetooth broadcasting will be turned off. In this case, to connect the App, you need to turn off the device, turn it on again, and restart the Bluetooth broadcasting status. When the device is turned off, the Bluetooth broadcasting will be turned off.

【Display Screen】

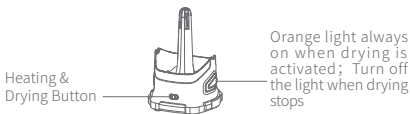
- When the power is turned on, the display lights up, the vibration and thrusting modes show 00-00 on the display.
- When adjusting the vibration modes, two digits on the left side of the display show 01-10. When adjusting the thrusting modes, two digits on the right side of the displays show 01-10.

【Heating Dock】

a.After the base is plugged lugged in and energized, the indicator light will not light up, Press 2 seconds to starts the heating at a constant temperature of 107°F, while the orange breathing light lights up. The heating stops after 20 minutes, and the orange light goes out after the heating stops.

b.After the base is plugged in and energized, Double-click the button to automatically start heating and drying at a constant temperature of 107°F, while the orange color lights up. The heating stops after 60 minutes, and the orange light goes out after the drying stops.

c.Long press button to force off heating, drying and indicator light.



Note:

After heated or dried, you need to use your fingers to feel whether the temperature of the soft rubber channel is overheated. If it feels hot, you should let it cool down for 3 to 5 minutes before adding water-based lubricant can be used only to avoid burns or discomfort caused by overheating.

Cleaning and storage



Electronic parts of the product

The head (core electronics) and heated base not waterproof, so do not wash. It is recommended to use a semi-dry towel to scrub. In order to ensure the service life of the product, you can usually stored in a cool and dry place and do not place in high humidity or temperature.

Soft Elastomer



1) The soft gel can be removed from the cup and rinsed directly inside the soft gel under the faucet.



2) Do not use cleaning and sanitizing solutions that contain alcohol or corrosive ingredients to clean the soft gel. The gel can be cleaned with a body lotion and then washed with warm or clean water at a temperature of less than 40 degrees Celsius.



3) Soak the soft gel channel cleaning rod in warm water, and after it's moistened, gently insert it into the soft gel channel and brush gently to remove lubricant and residue. Then gently wipe the surface of the channel with a soft cloth to absorb moisture. Lay the soft gel channel in a cool and well-ventilated area to air dry that ensure it is completely dry.



4) Do not use hair dryers or hot air devices to blow-dry the soft gel, as it may cause irreversible damage to the product. After the soft gel is completely air-dried, you can apply specialized utensil care powder on the surface of the soft gel to ensure a dry and smooth product.



5) Please do not place the product in direct sunlight or store it in high-temperature environments (such as leaving it outdoors or in a car exposed to high heat) to prevent material degradation and deformation of the product.

Note: The soft gel is a consumable item. It is recommended to replace the soft gel every 60 uses or every four months (The lifespan varies based on different usage methods). If you notice any cracks in the soft gel, please stop using it immediately to prevent liquid from leaking into the electronics and causing damage.

Precautions

User Group(s)

- This product is only suitable for adults aged 18 and above. To avoid transmitting diseases, please use it for personal use and do not share it with others.
- Do not use this product if you are feeling unwell.
- Individuals using medical electronic devices (such as pacemakers) and anyone who may experience discomfort should not use this product.

Storage and Preservation

- When not in use for an extended period, please fully turn off the product's power before storing it. In very rare cases, if the product's built-in battery naturally deteriorates due to non-use or lack of charging for over six months or an extended period. Please make sure to fully charge the product at least once every 3 months.
- Please do not store the product in direct sunlight or in high-temperature environments (such as leaving it outdoors or in a car exposed to high heat) to avoid the possibility of malfunction, overheating, or fire.
- Please do not disassemble any parts of the product, as it may result in damage or compromise your safety.
- Please do not use any external devices to heat or dry the product, such as microwaves, hair dryers.
- When placing the product in a handbag or briefcase, please put it in your provided storage bag to avoid unnecessary scratches or contact with external bacteria.

Product Electronic Reset

- If you encounter program errors or a situation where certain functions cannot be used, please turn off the product and charge it. That will reset the electronic functions of the product. Then, turn on the product again to resume normal operation.

Product Specification

Product Name:The Titan Masturbator

Product Model:The Titan-BT

Product Dimensions:309.4x102x100mm

Product Material:ABS、TPE

Product Weight:1035g **Rated Voltage:**7.4V === **Rated Power:**10W

Built-in Power Supply:Rechargeable Lithium Battery Pack 7.4V 800mAh

Charging Time:Approx. 2-3 hours

Usage Time:About 1h (depending on the use mode)

Product Name:The Titan Masturbator Heating Dock

Rated Voltage:5V === **Rated Power:**10W

※ The electronic components are not waterproof, but the soft gel can be washed with water.

Recycling instructions for the product and components

In order to protect the environment, after the product or its components are discarded, as a responsible consumer, you have the responsibility to separate them from household waste and take them to qualified recycling facilities. These facilities will handle the sorting, disassembly, recycling, and reuse according to local regulations.

※ Before discarding the appliance, it is necessary to remove the batteries from the device.

※ The device must be powered off when removing the batteries.

※ Batteries should be disposed of safely.

After-Sales Service

※ We provide a one-year warranty for the product.

※ After-Sales Service: Please remember your order number and product name, then contact us via email address.

※ If you have any questions during the use of the service, please contact us via email.

※ We will provide you with a satisfactory response within 24 hours.

※ sales@cyberskin.com

FCC Warning

This device complies with Part 15 of the FCC Rules. Operation is subject to the following two conditions:

(1) This device may not cause harmful interference, and (2) this device must accept any interference received, including interference that may cause undesired operation.

NOTE 1: This equipment has been tested and found to comply with the limits for a Class B digital device, pursuant to part 15 of the FCC Rules. These limits are designed to provide reasonable protection against harmful interference in a residential installation. This equipment generates, uses and can radiate radio frequency energy and, if not installed and used in accordance with the instructions, may cause harmful interference to radio communications. However, there is no guarantee that interference will not occur in a particular installation. If this equipment does cause harmful interference to radio or television reception, which can be determined by turning the equipment off and on, the user is encouraged to try to correct the interference by one or more of the following measures:

- Reorient or relocate the receiving antenna.
- Increase the separation between the equipment and receiver.
- Connect the equipment into an outlet on a circuit different from that to which the receiver is connected.
- Consult the dealer or an experienced radio/TV technician for help.

NOTE 2: Any changes or modifications to this unit not expressly approved by the party responsible for compliance could void the user's authority to operate the equipment.

The device has been evaluated to meet general RF exposure requirement. The device can be used in portable exposure condition without restriction.

MADE IN CHINA