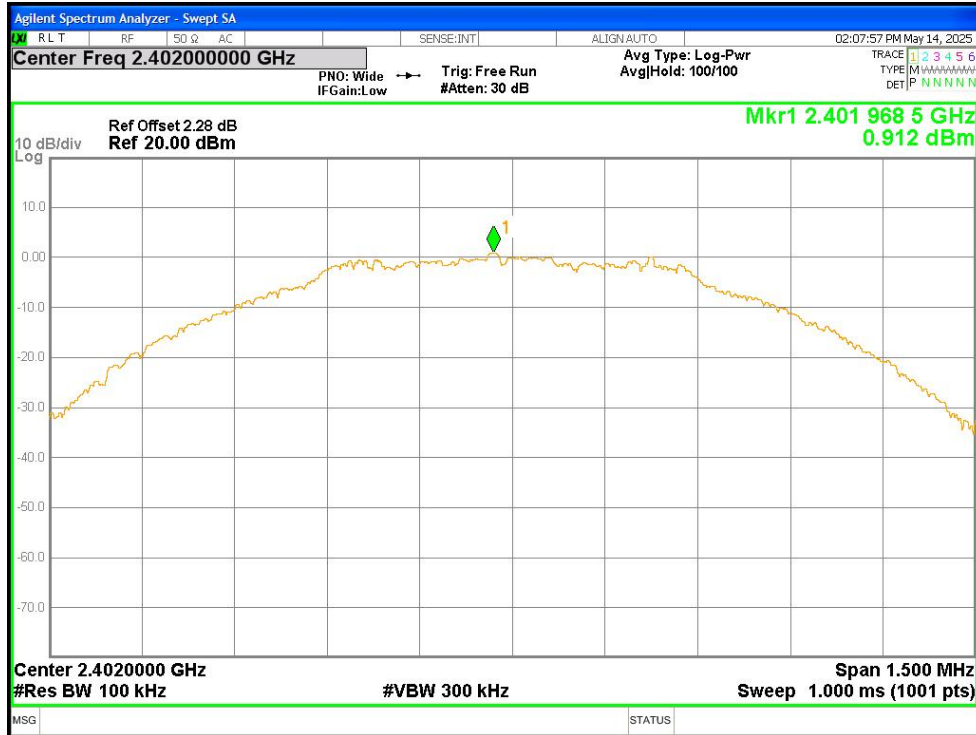
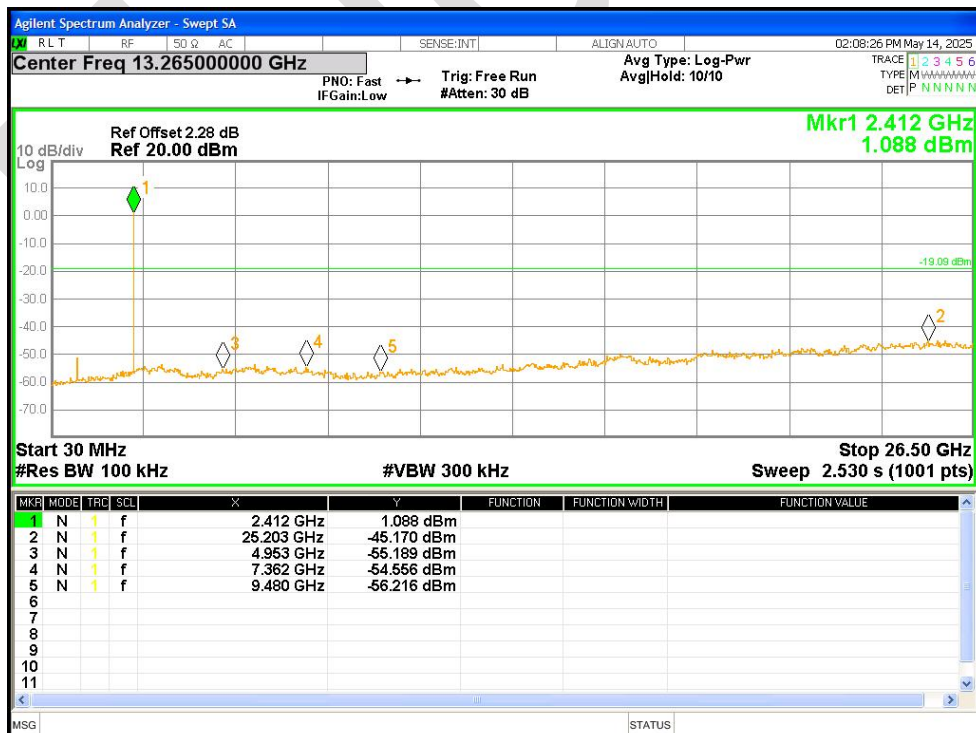


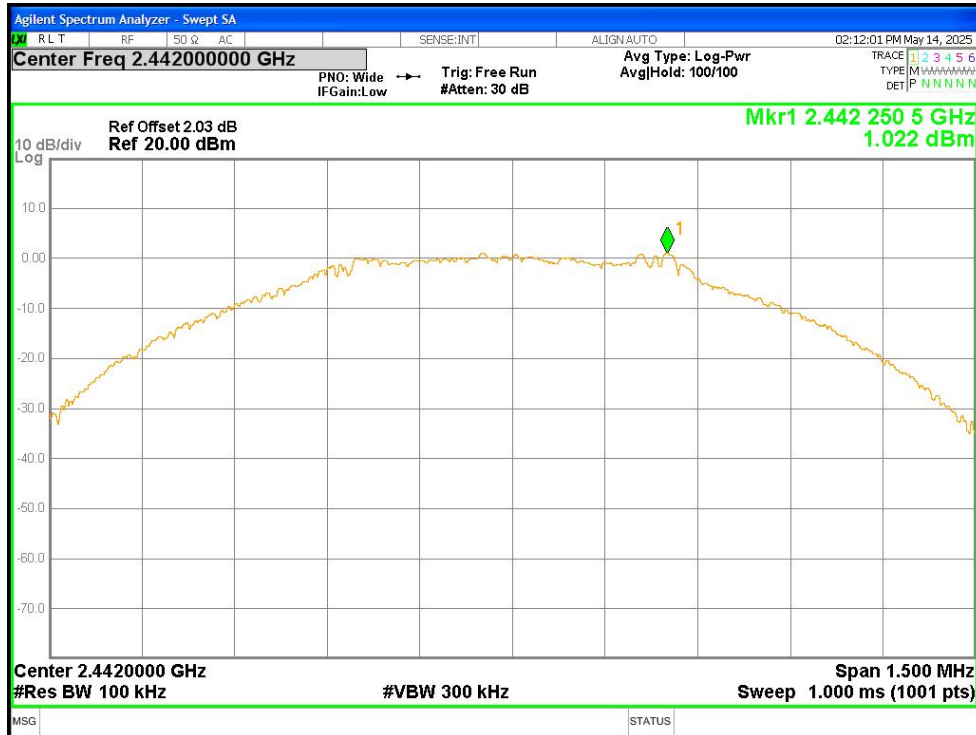
Tx. Spurious NVNT BLE 1M 2402MHz Ant1 Ref



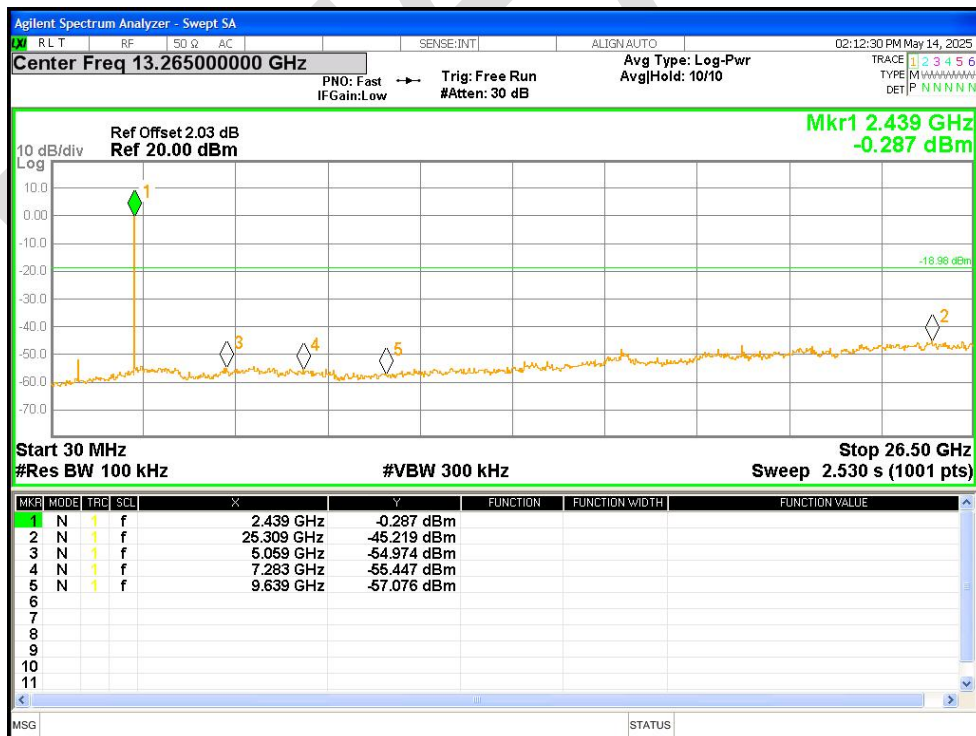
Tx. Spurious NVNT BLE 1M 2402MHz Ant1 Emission



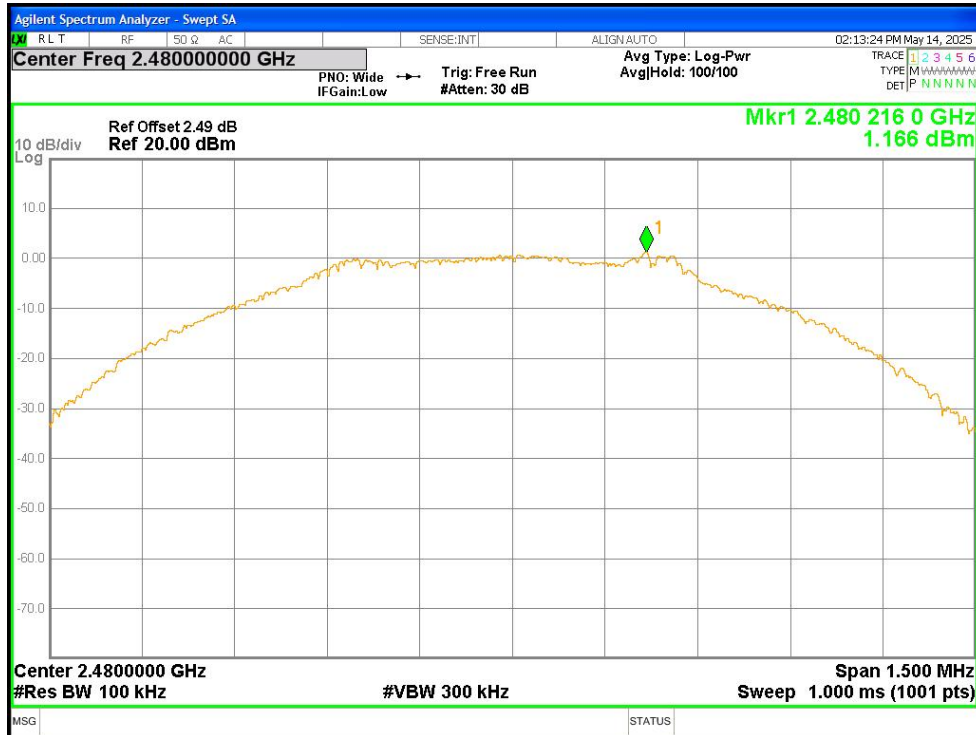
Tx. Spurious NVNT BLE 1M 2442MHz Ant1 Ref



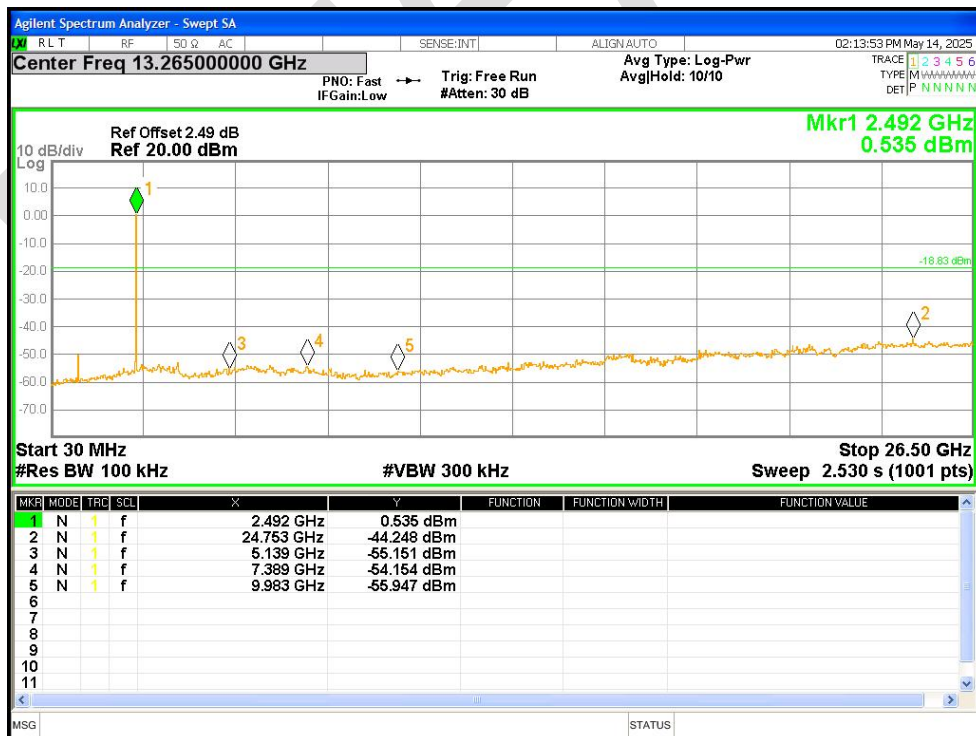
Tx. Spurious NVNT BLE 1M 2442MHz Ant1 Emission



Tx. Spurious NVNT BLE 1M 2480MHz Ant1 Ref

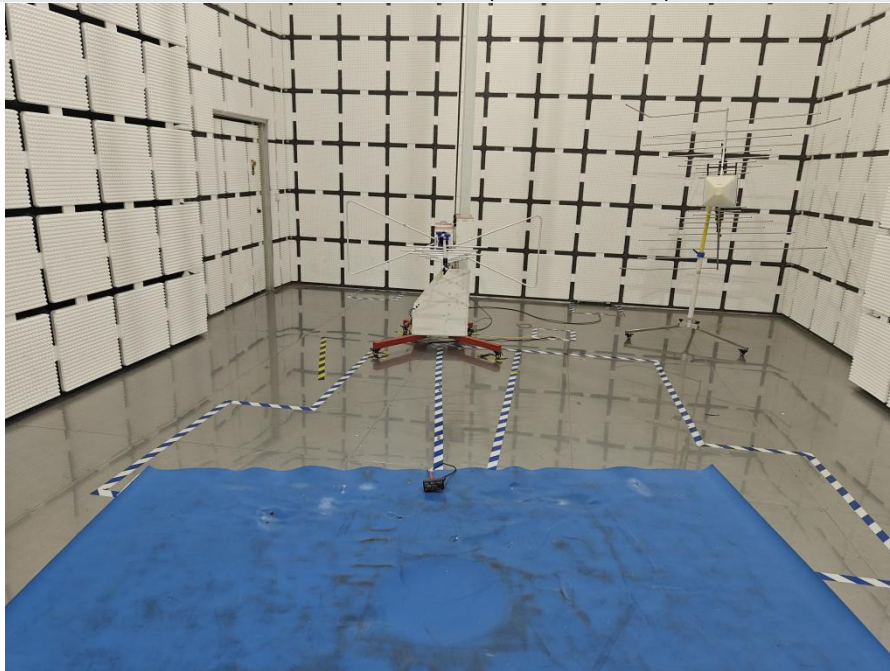


Tx. Spurious NVNT BLE 1M 2480MHz Ant1 Emission



Appendix B: photographs of test setup

Radiated Emissions (30MHz-1GHz)



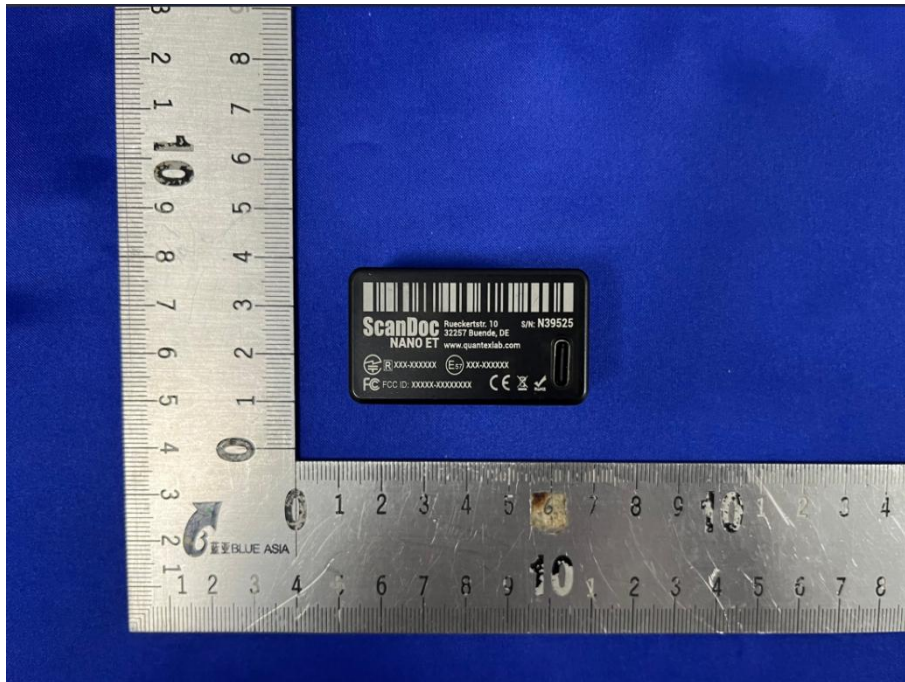
Radiated Emissions (above 1GHz)



Conducted Emissions at Mains Terminals (150 kHz-30MHz)



Appendix C: photographs of EUT



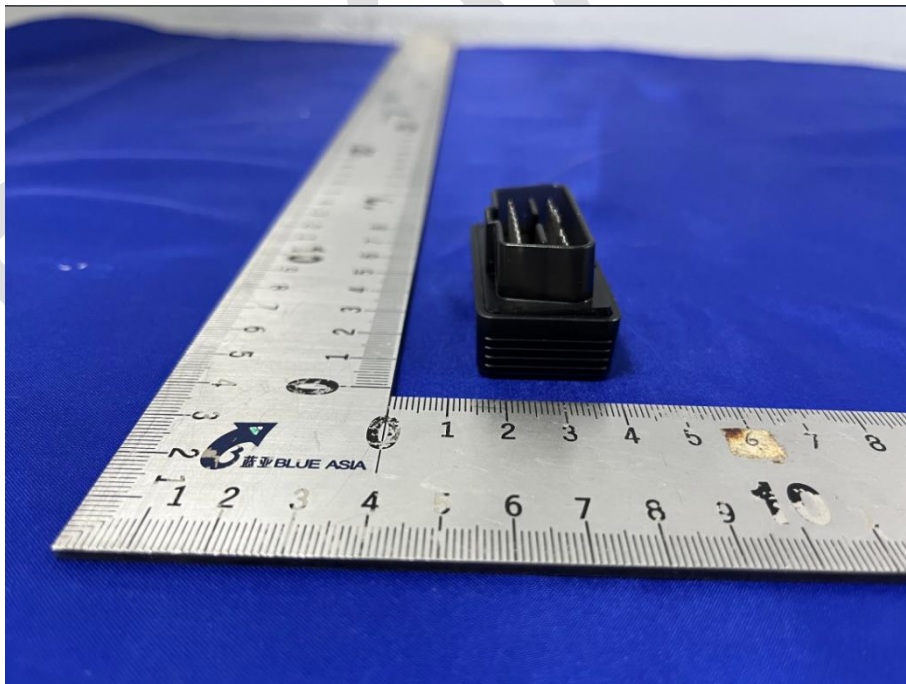
View of Product-1



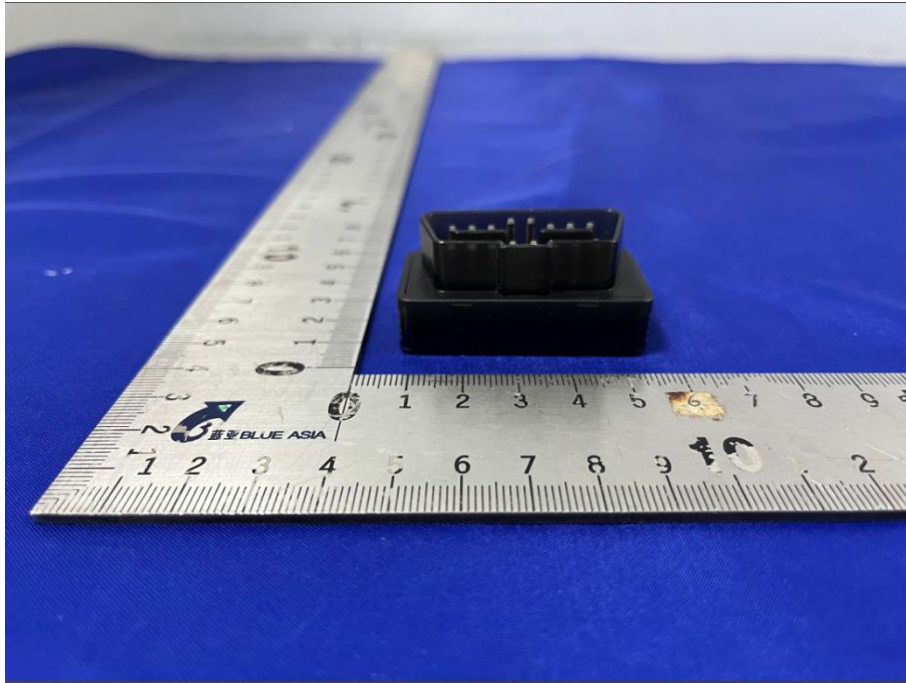
View of Product-2



View of Product-3



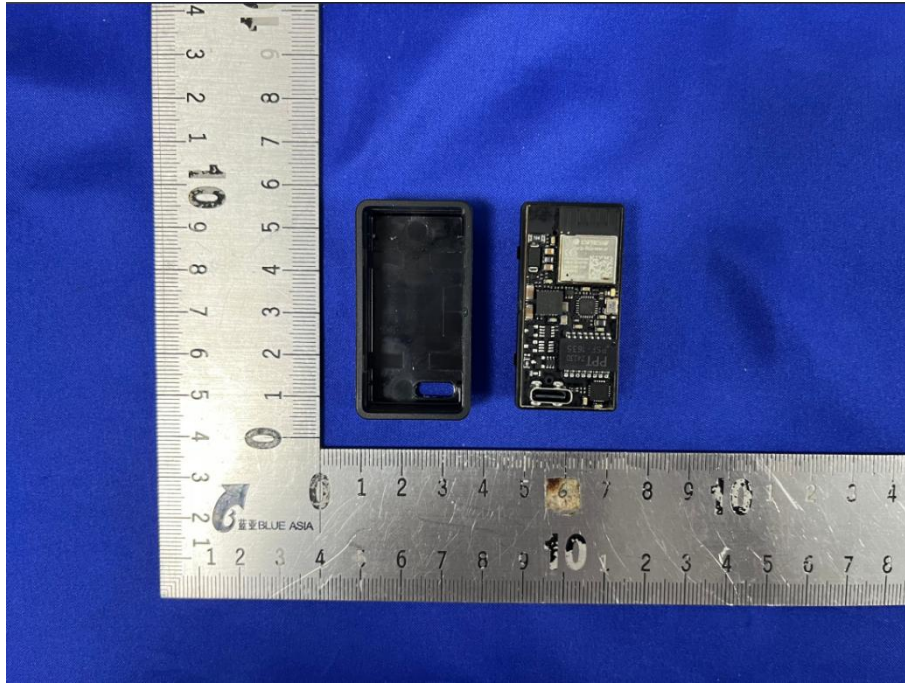
View of Product-4



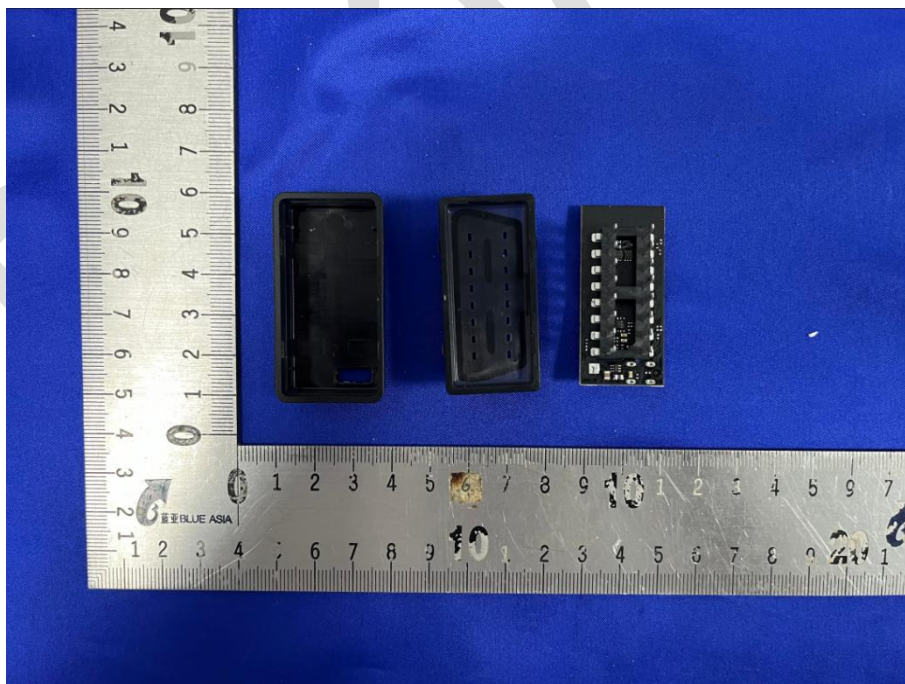
View of Product-5



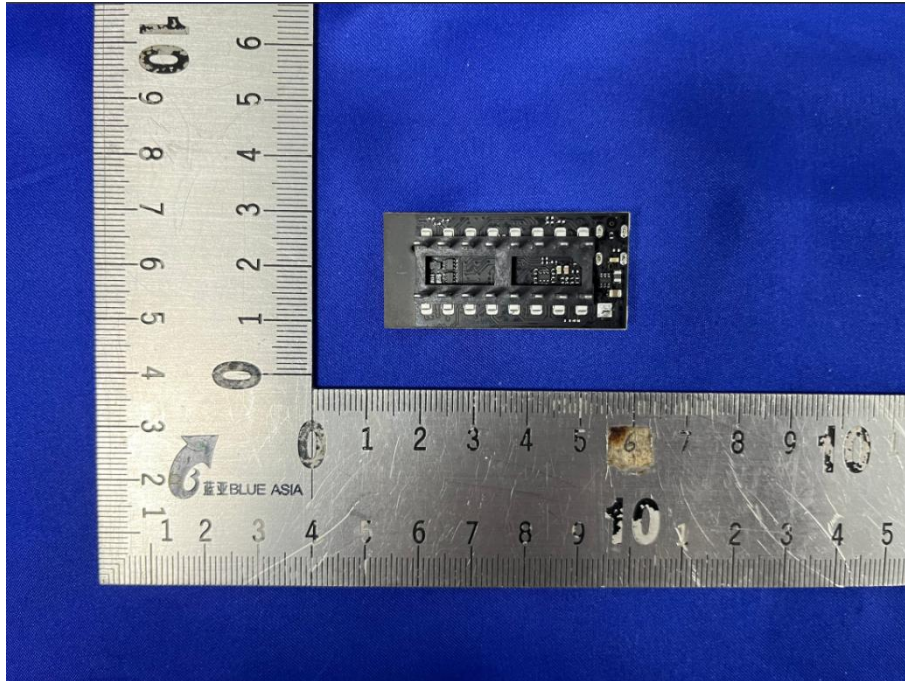
View of Product-6



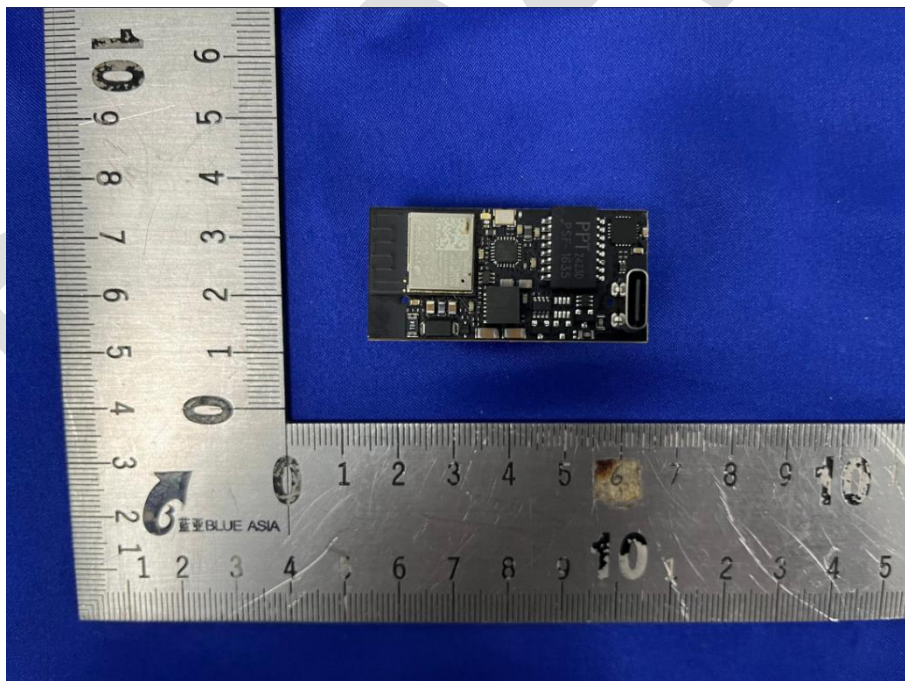
View of Product-7



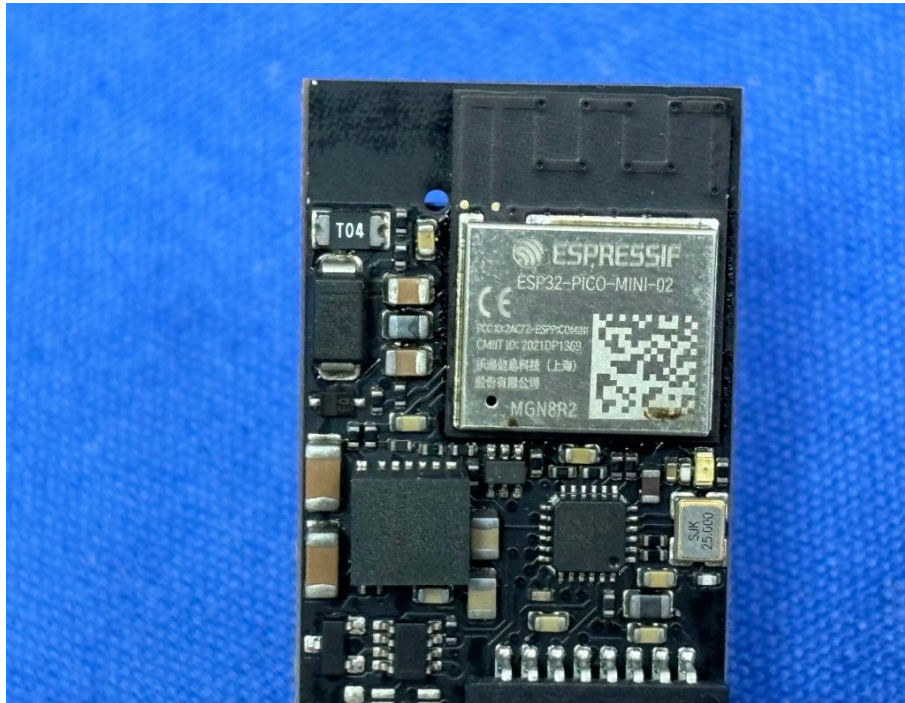
View of Product-8



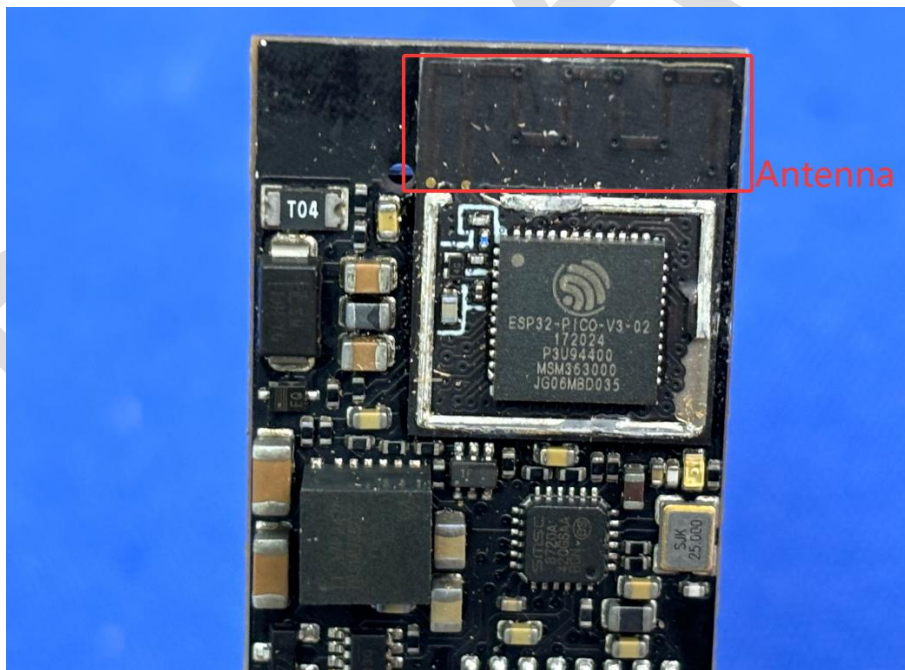
View of Product-9



View of Product-10



View of Product-11



View of Product-12

----END OF REPORT----

The test report is effective only with both signature and specialized stamp, the result(s) shown in this report refer only to the sample(s) tested. Without written approval of BlueAsia, this report can't be reproduced except in full.

BlueAsia of Technical Services (Shenzhen) Co., Ltd.

Tel: +86-755-23059481

Email: marketing@cblueasia.com www.cblueasia.com

Version: v1.3