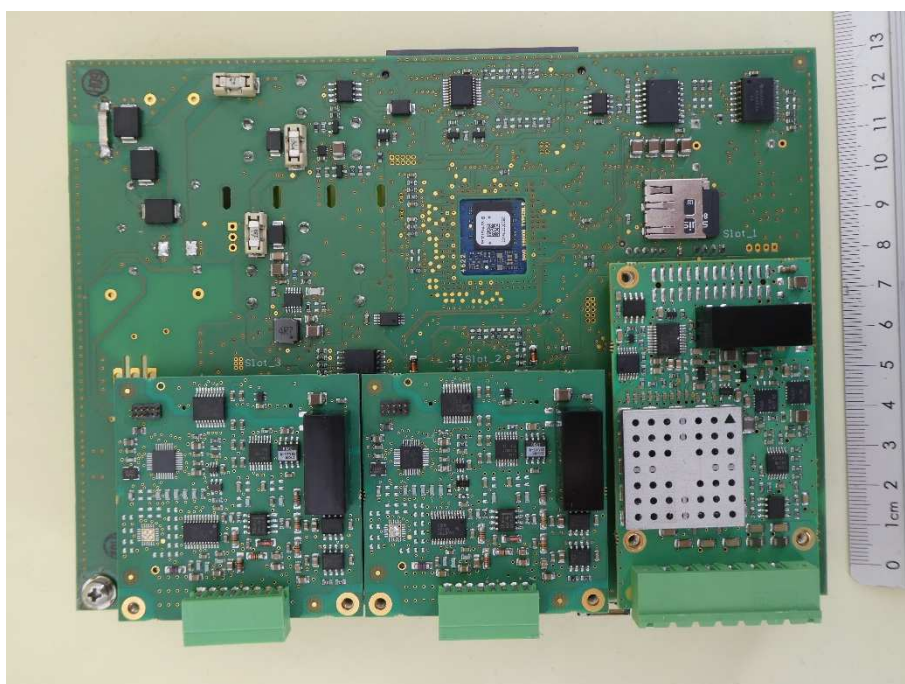


Internal Photographs (EUT with 24 V supply)

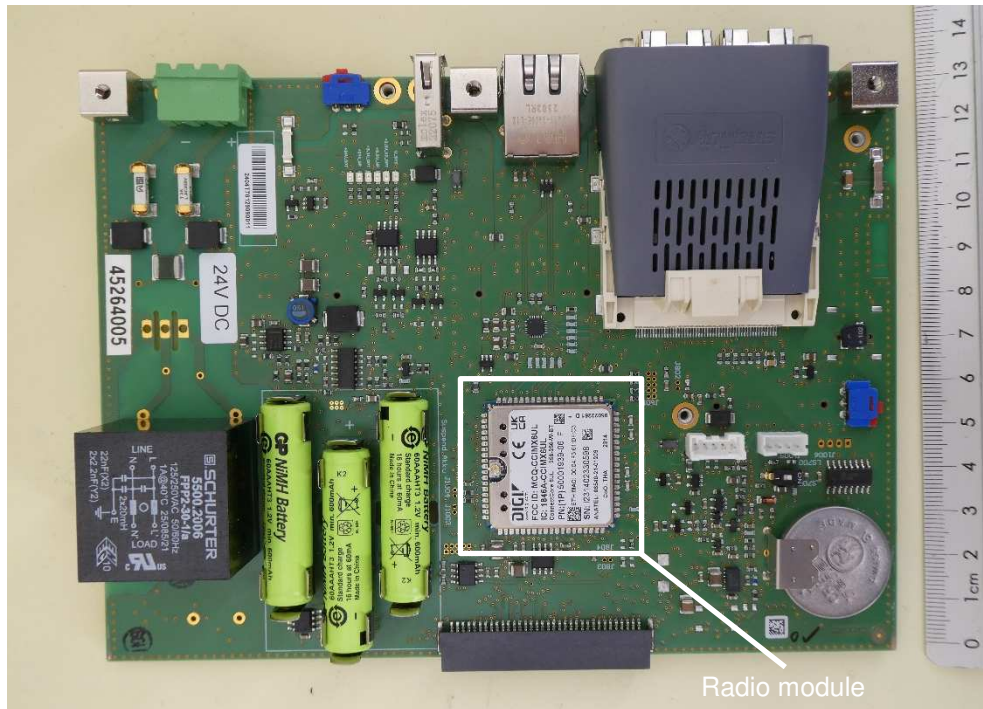


EUT – housing opened

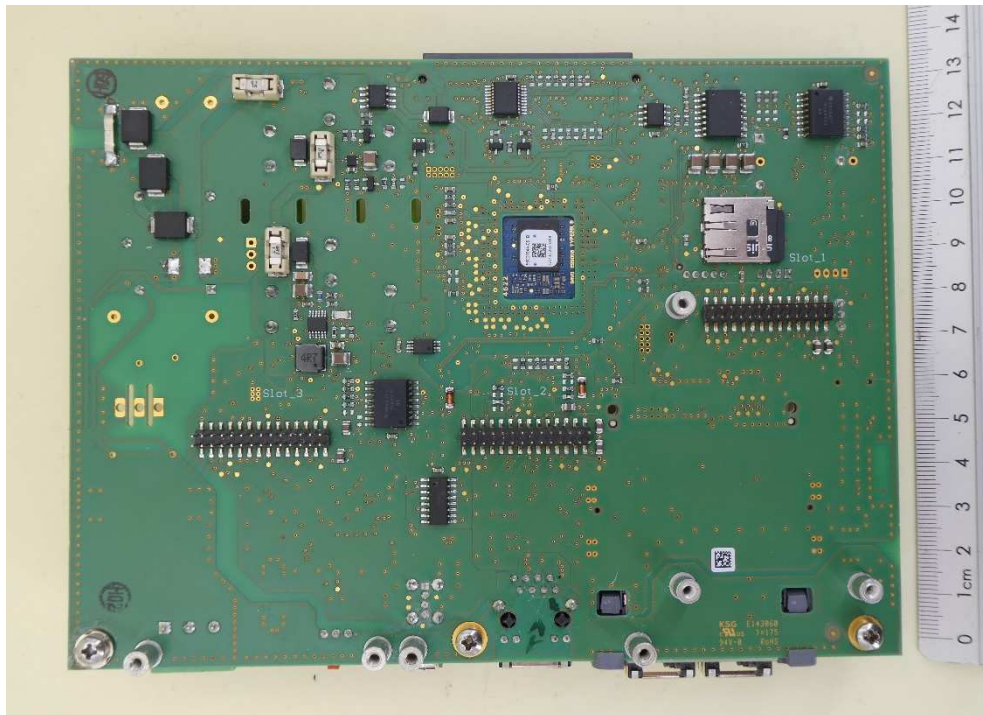


Main PCB – PCBs mounted

Internal Photographs (EUT with 24 V supply)



Main PCB – top view

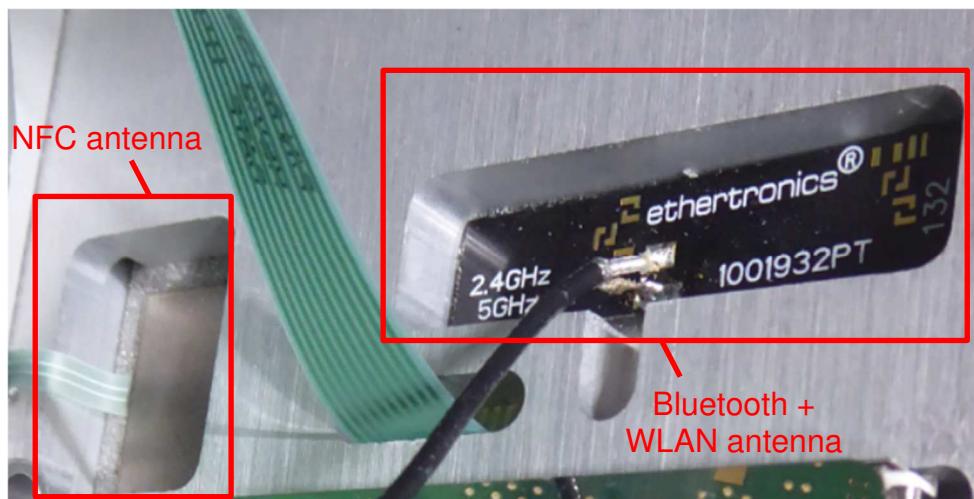


Main PCB – bottom view

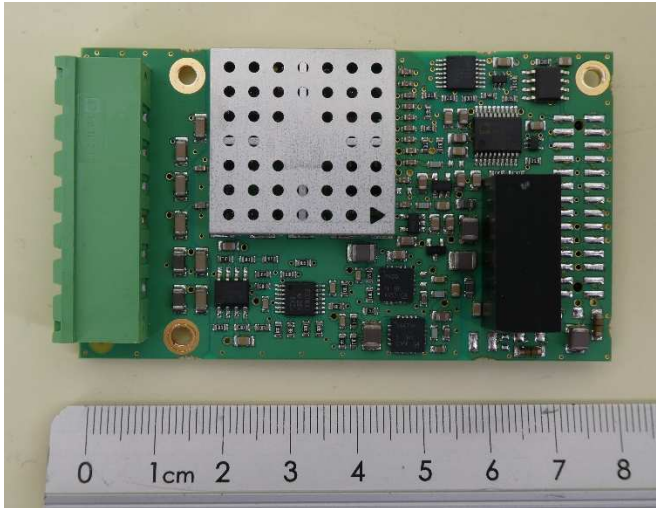
Internal Photographs (EUT with 24 V supply)



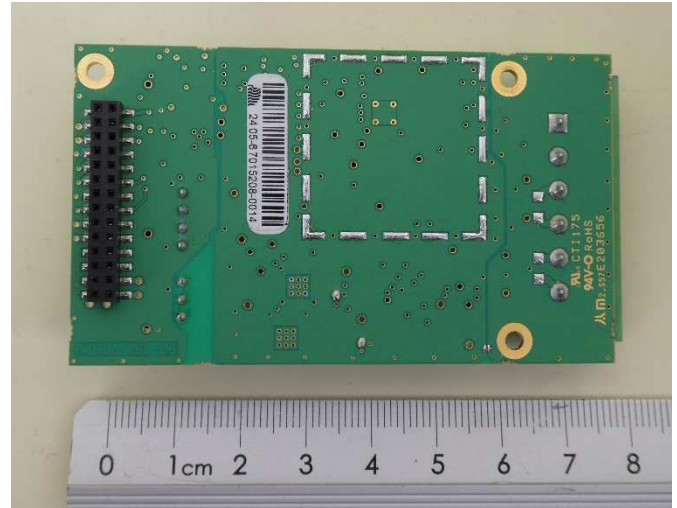
Radio module



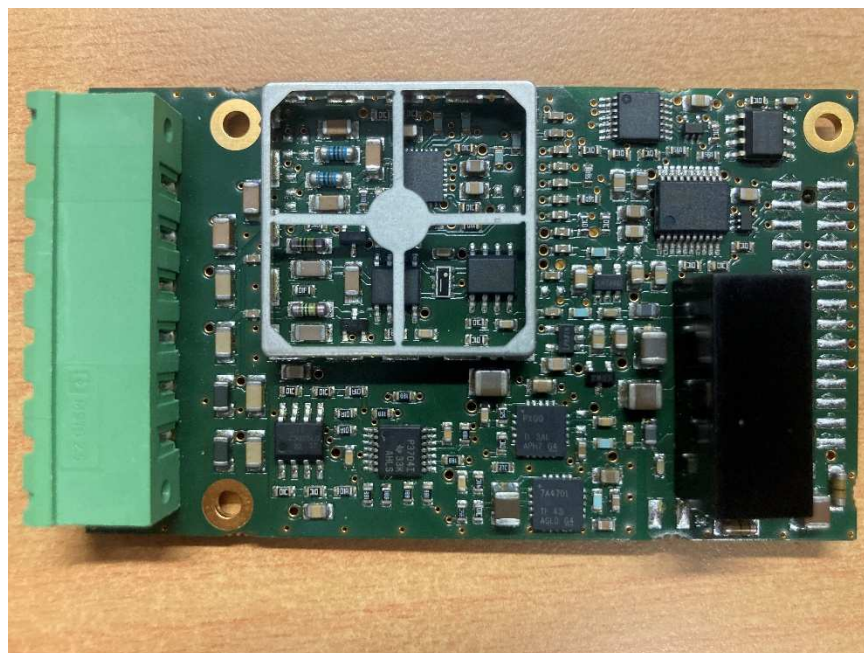
Internal Photographs (EUT with 24 V supply)



Connector PCB 1 – top view

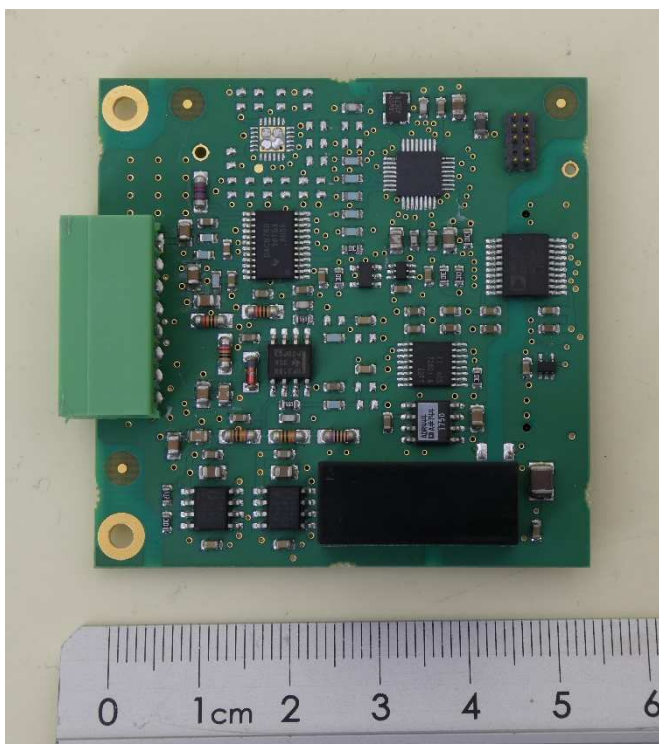


Connector PCB 1 – bottom view

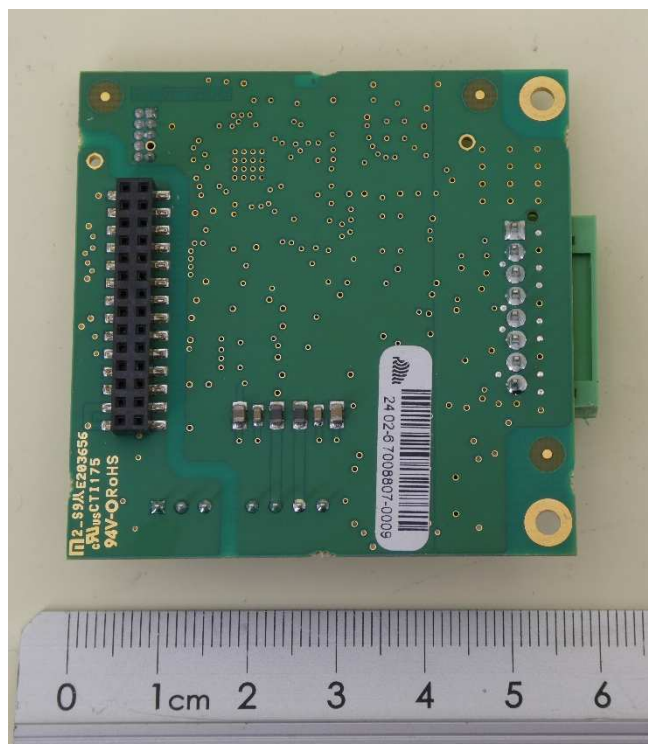


Connector PCB – shielding removed
Remark: This image was provided by the applicant

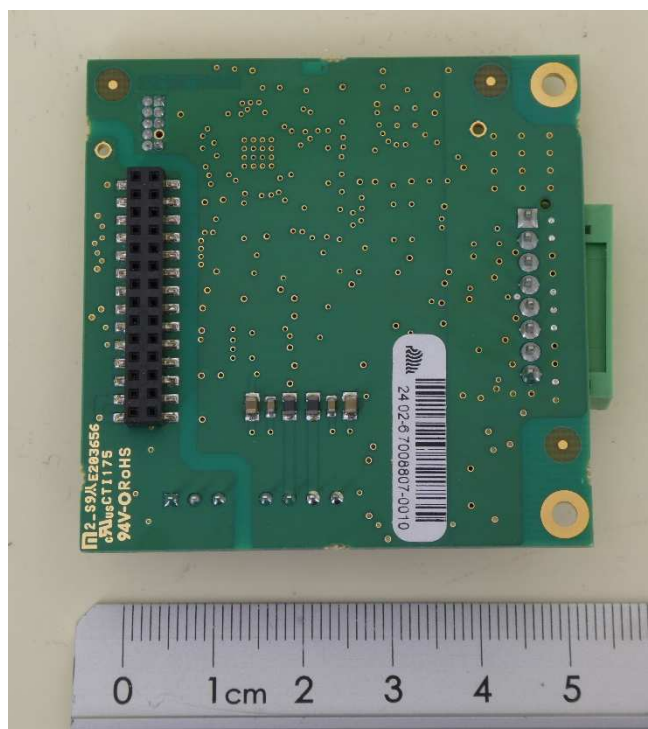
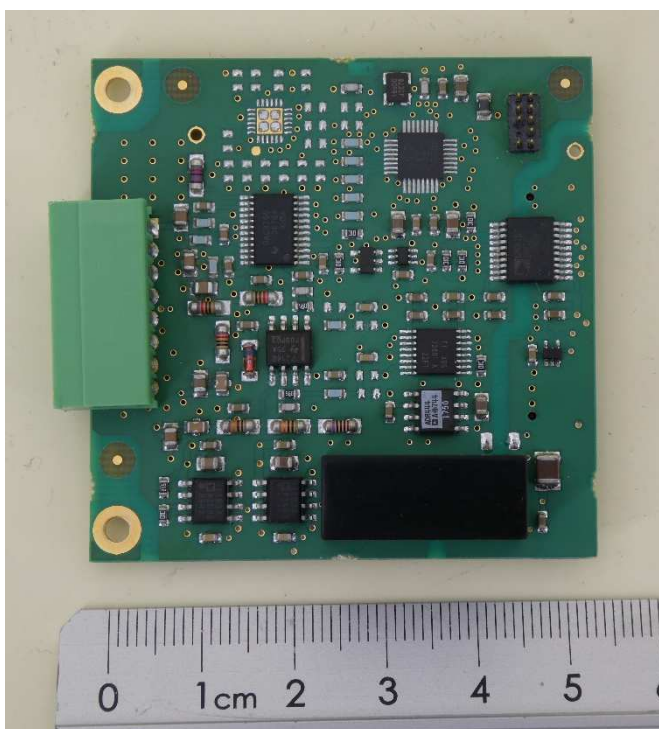
Internal Photographs (EUT with 24 V supply)



Connector PCB 2 – top view



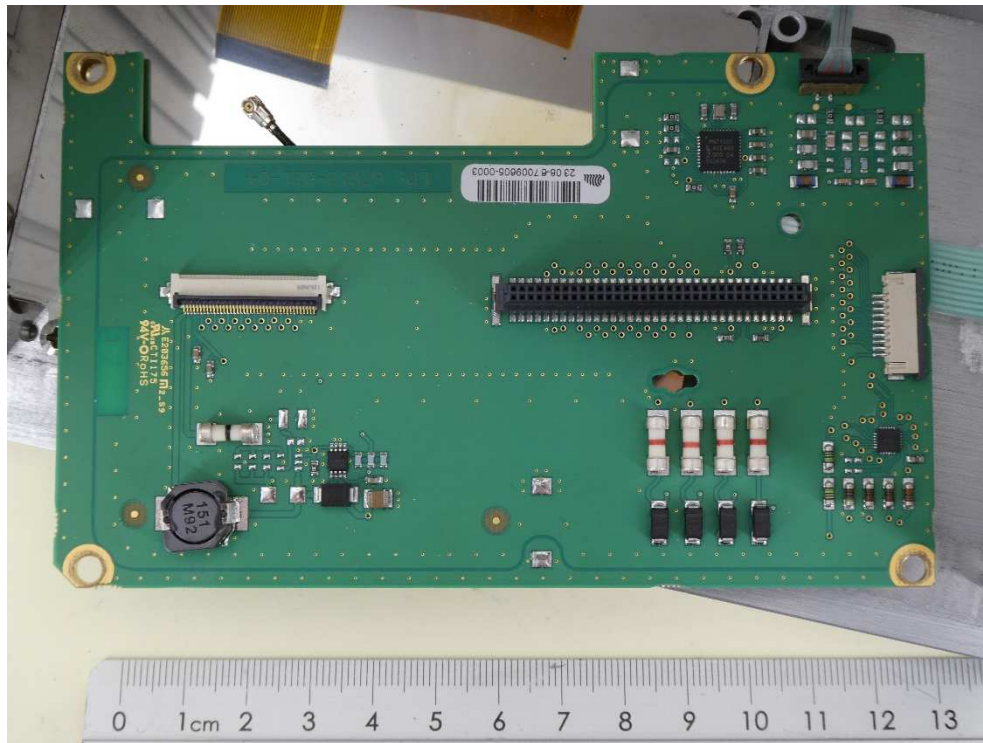
Connector PCB 2 – bottom view



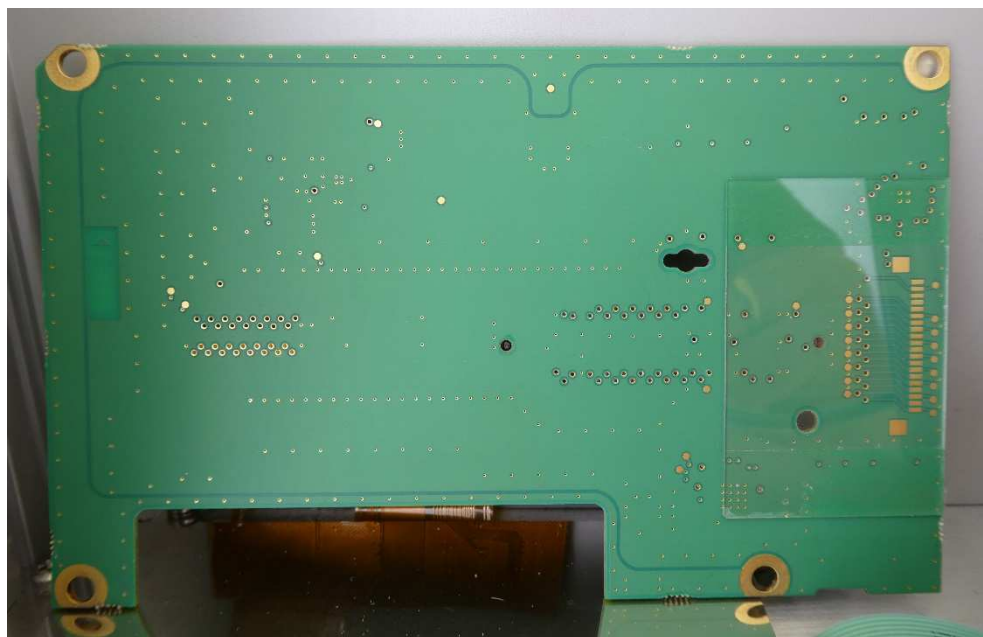
Internal Photographs (EUT with 24 V supply)

Connector PCB 3 – top view

Connector PCB 3 – bottom view



Front PCB – top view



Front PCB - bottom view