
USER MANUAL

Tablet PC

Tablet with Android™

Please read this manual before operating your tablet,
and keep it for further reference.

FEATURES

Browse the web

Visit your favorite websites.

Check your E-mail

Keep in touch with friends and families.

Make watching your favorite videos easier with the YouTube app

Explore brand new content, music, news and more with the official YouTube app.

Connect to the Internet wirelessly

With high-speed Wifi 802.11a/b/g/n(2.4GHz/5GHz) networking, you can enjoy your media library anytime and anywhere.

TF memory card reader

Increase your storage capacity (up to 1TB supported).

Built-in camera

Convenient front-facing camera 2MP/rear camera 8MP (support flash).

Automatic orientation detection

Read any way you want, the display adjusts automatically!

GETTING STARTED

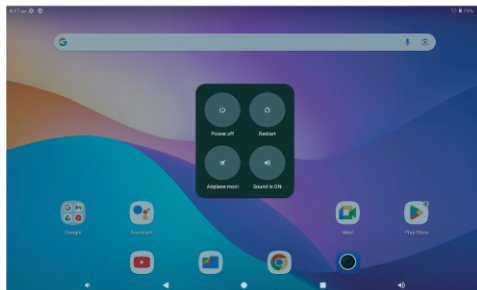
Turning on/off the tablet

To turn on the tablet:

Press and hold the Power button until the LCD screen turns on. Wait until the Home screen appears, the tablet is now ready for use.

To turn off the tablet:

1. Press and hold the Power button until the Device Options menu appears.



2. Tap "Power off" to turn off the tablet.

Turning on/off the screen (Sleep mode)

When the tablet is on, you can turn off the screen to save battery power. Simply press the Power button once to turn the screen off. Press the Power button again to turn the screen back on.

To save battery power, the screen can be set to turn off automatically when the tablet is not in use (between 1 minute and 30 minutes).

This screen timeout option can be found in the Display menu.

Changing the language

Many users purchase Android tablets that come with the user interface in English, and they want to use their native language, like Spanish, French, Chinese, German and so on.

Go to Settings → System → Language & Input → Languages → Add a language. A list is shown with all the available display languages that you can use on your Android device. Tap and hold the lines near the name of the language that you want to use, and drag it to the top of the list.

If you do not need a particular display language, you can delete it. Click the three dots near the text Language preferences on the top-right corner of the screen, a menu will show, tap "Remove".

Home Screen

- ① **Back:** Press to check the previous operating display.
- ② **Home Screen:** Press to go to the home screen.
- ③ **Background:** Press to check applications running in the background. Closing idle apps may provide a better performance.
- ④ **Application Panel:** Swipe up the screen to check all available applications.

Wallpaper

Tap and hold your finger in any blank space of the home screen, you will see a pop-up menu; you can choose an image from Gallery or your downloaded files or those listed as options; set the one you like to be your the wallpaper.

Widgets

Tap and hold your finger in any blank space of home screen, you will see a pop-up menu with widget.

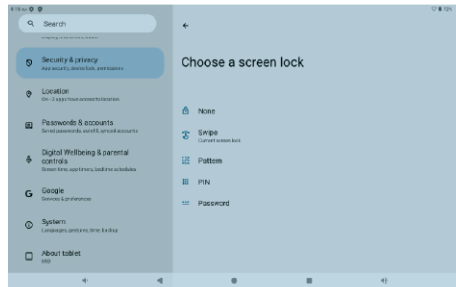
Tip:

1. To make a folder on the home screen, drag an app onto another app. To rename the folder, tap the folder, tap 'Unnamed Folder', and then enter the new name.
2. Swipe down vertically from the top of your screen to enter the quick notification menu.

Screen Lock

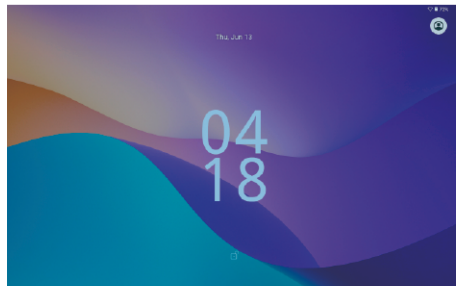
Set a screen lock to secure your tablet.

Go to Setting → Security → Screen security → Select screen lock, and select a mode from None, Swipe, Pattern, PIN and Password. You can create a Backup PIN as a safety measure in case you forget your code.



Unlocking the Screen

When the screen turns off, you will have to unlock the screen when you turn it back on. To unlock the screen, swipe up the lock icon.

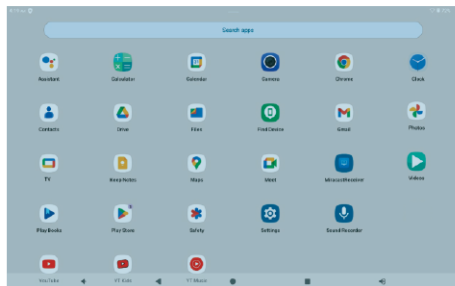


Taking a Screenshot

Press and hold the power button and volume "+" at the same time to take a screenshot. The screenshot will be saved in the photos file.

ABOUT APPLICATIONS

To open an application, tap the application icon on the home screen or in the Launcher where you can tap the icon right up on the home screen to get in.



The screen shown above is for illustrative purposes only. We reserve the right to modify and improve the final list of applications available on the tablet.

Pre-installed Applications

Some applications have been installed on your tablet for your convenience.

These applications include:

- Browse the web.
- Perform simple mathematical operations.
- Take pictures or videos with the camera.
- Check your e-mail.
- Play music.
- Access the Settings menu to adjust the tablet's options.

Installing Applications

You can also download and install additional applications from the device's applications marketplace, the web browser, or other sources.

The tablet must be set to allow the installation of applications from non-market sources. The unknown sources option can be set in the Application settings menu.

Note:

- Users are responsible for all charges from specific apps if it is necessary.
- Manufacturers/sellers are not responsible for apps that are incompatible with the device.
- In some cases, there may be no icon in the App Panel after an app is installed. Possible reasons may be that this app is not compatible with your OS or the downloaded file is a broken one so you may need to download a full version. If you install and use an OS other than the one provided by the manufacturer, it may cause your device to malfunction, therefore, your device will no longer be covered by the warranty in this condition.

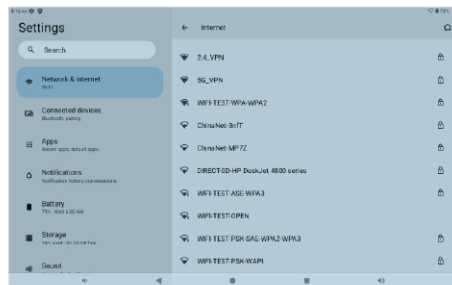
CONNECT TO A Wifi NETWORK

The Notification bar displays icons that indicate your tablet's Wifi status.

- Notification that an open Wifi network is in range.
- Connected to a Wifi network (waves indicate connection strength).
- [no icon] There are no Wifi networks in range, or the Wifi radio is off.

1. Turn on Wifi

- Swipe up on the screen and tap Settings.
- Tap Network & internet And then Wifi.
- Turn on Use Wifi.



Your device will automatically search for available Wifi networks.

Note: If a network that you've connected to before is available, the tablet will connect to it. If the network you want isn't listed, but is nearby, wait for the list to refresh. Or, tap Add network, enter the network name (SSID) and security details, and tap Save.

2. Select an available Wifi network to connect:

In the same Wifi settings menu above, tap a network in the list.

If the network is open, the tablet will prompt you to confirm connection to the network. Tap **"Connect"** to confirm.

If the network is secured (as indicated by a Lock icon), the tablet will prompt you to enter a password or other credentials. Tap the Wireless password box to show the on-screen keyboard and then use it to enter the password.

Tap **"Connect"** to confirm.



When you have successfully connected to a Wifi network, the Notifications bar at the upper right of the screen will show a Wifi signal indicator.

Note: To learn about how to add a Wifi network when it is not in range or when the router is set to obscure the network name (SSID), or to configure advanced Wifi options, please refer to the manual.

INTERNET NAVIGATING

Before using your browser, make sure Wifi or mobile data is turned on.

Setting Browser

You can use the browser preinstalled, or download others you prefer. Tap the icon on the top right corner of the browser page to open the sub-menu for more detailed settings.

Navigating

Tap the browser icon to open your browser. You can access a website quickly by entering the URL using the on-screen keyboard. Websites are optimized for viewing on your actual devices.

Bookmarks

1. Tap ☆ on any web page to add a bookmark. You can then tap "OK" to save or rename the website.
2. Tap ★ to view bookmarked sites, pages you saved and your browsing history.
3. To delete a bookmark, go to bookmarks page, tap and hold the bookmark you want to delete. Tap **"Delete bookmark"**. At the Delete confirmation window, tap OK.

Cookies

Cookies placed on your device by a website during navigation contain some site-specific information. It can also contain some personal information (such as a username and password) which can pose a security risk if not properly managed. You can clear these cookies from your device at any time. Go to Home webpage, tap Settings → Privacy & Security → Clear all cookies data.

CONNECT TO A BT DEVICE

Turn on BT

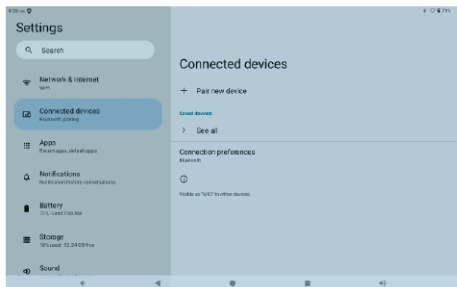
You must pair your device with another device before you can transfer files between them. Under “Settings”, tap “Connected devices → Connection preferences → BT → ON”, the BT indicator then appears in the status bar. It will start searching for available devices nearby. If you need to rescan, tap the menu on the top right corner, and tap “refresh”.

Scan Device

After scanning, there will be a list of all available BT devices in range. If the device you want to pair with isn't in the list, ensure that the other device is turned on and set to be discoverable.

Pair with BT Device

Tap the name of an available BT device you want to pair with. On the target device you will get a “BT Pairing Request” dialog. Tap “Pair”, it will then show you paired devices.



Device Reset

You may reset your tablet when necessary. For example, you can choose to reset your tablet if you forgot the password or PIN of the tablet. Resetting your tablet will clear all info in your tablet and restore your device to factory default settings.

WARNING!

If you perform a Hard Reset, all data from your tablet, including your account configuration, apps, music, pictures, and files, will be deleted. Please remember to back up any important data before performing a Hard Reset.

OPTIONAL CONNECTIONS

Connecting to a Computer

Connect the tablet to a computer to transfer files.

1. Connect your tablet to the computer.

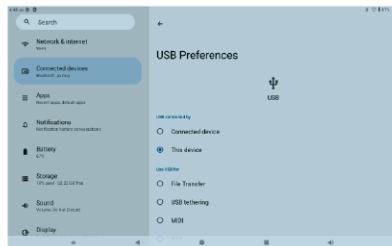
Connect the included USB cable to your tablet's USB Type-C port and your computer's USB port.

2. Tap the notification on the tablet.

Swipe down the notifications panel and tap the USB icon.

3. Tap Media Device (PTP).

This allows you to transfer files between your computer and tablet.



TROUBLESHOOTING

1. Device doesn't power on.

- Reboot your device after charging it for 30 minutes.
- Shortly press your power button to check if it lights up in case your device is in sleep mode.
- Press the power button for 20 seconds.
- Start a hard reset by pressing the reset button with a pin.

2. Device doesn't take charge.

- Keep your device into power for 30 minutes if it was completely drained.
- Check and make sure the charger is properly inserted into the charging port.
- Try another outlet or compatible charger.

3. Error message during operation.

- Uninstall the application with an error message and download it to install again. You can also update certain applications with errors.
- Delete and clear the system to factory mode with a system reset.

4. Device can't be detected by a PC.

- Make sure your device is in "on" status.
- Try with another USB cable.
- Connect your device to a different port on your PC.

5. Device can't be connected with Wifi.

- Make sure your turn Wifi to "ON" status.
- Unplug the Wifi router, wait for 2 minutes and plug to connect again.
- Make sure you input the correct password by selecting "show password" when you input it.
- Check and make sure there is no filtering setting or device connection limit in your router setting.
- Forget original Wifi connection, reset the Wifi router, and connect again.

6. Storage not enough.

- Delete applications you don't use often to spare some space.
- Clean caches in your device regularly. Tap Settings→ Apps & notifications → See all XX apps. Tap on an app, then tap Storage. Choose to Clear storage or Clear cache.
- Install a third-party system cleaner.
- Factory reset your tablet to clear all data.
- Insert a TF card (microSD card) to expand its memory.

Note: This equipment has been tested and found to comply with the limits for a Class B digital device, pursuant to part 15 of the FCC Rules. These limits are designed to provide reasonable protection against harmful interference in a residential installation. This equipment generates, uses and can radiate radio frequency energy and, if not installed and used in accordance with the instructions, may cause harmful interference to radio communications. However, there is no guarantee that interference will not occur in a particular installation. If this equipment does cause harmful interference to radio or television reception, which can be determined by turning the equipment off and on, the user is encouraged to try to correct the interference by one or more of the following measures:

- Reorient or relocate the receiving antenna.
- Increase the separation between the equipment and receiver.
- Connect the equipment into an outlet on a circuit different from that to which the receiver is connected.
- Consult the dealer or an experienced radio/TV technician for help.

Important: Change or modifications not expressly approved by the manufacturer responsible for compliance could void the user's authority to operate the equipment.



Made in China