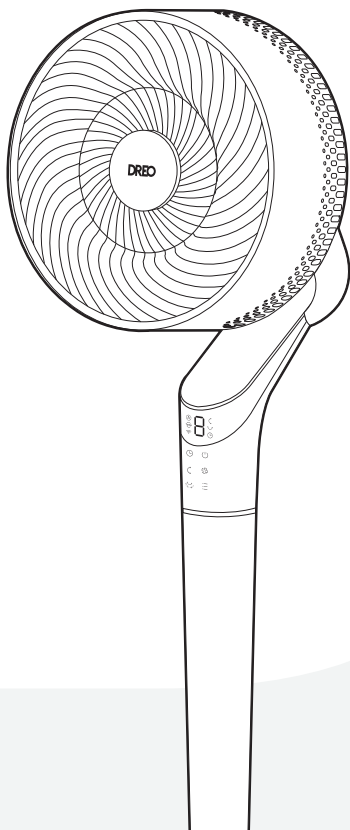


# DREO | TurboPoly™ Fan 350S

## USER MANUAL



//

# Thanks for Choosing **DREO!**

Your support means the world to us. We hope you enjoy our product as much as we did creating it.

# CONTENTS

## 01

IMPORTANT SAFETY  
INSTRUCTIONS

1-3

---

## 02

ASSEMBLING YOUR  
APPLIANCE

4-6

---

## 03

CONNECTING TO  
YOUR APPLIANCE

7

---

## 04

KNOWING YOUR  
APPLIANCE

8-9

---

## 05

USING YOUR  
APPLIANCE

10-13

---

## 06

CLEANING AND  
MAINTENANCE

14-17

---

## 07

TROUBLESHOOTING

18

---

## 08

DREO CUSTOMER CARE

19-20

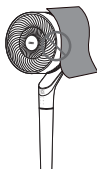
---

# IMPORTANT SAFETY INSTRUCTIONS

# 01



READ ALL CAUTIONARY MARKINGS ON THE APPLIANCE AND SAFETY INSTRUCTIONS IN THE USER MANUAL BEFORE USE.



**Do not** cover the air inlet and outlet while in operation.

**Do not** use the air circulator near flammables and combustibles.

## General Safety

1. Children shall not play with the appliance. Cleaning and maintenance shall not be performed by children without supervision.
2. Use the appliance as described in the user manual only. Any other use not recommended in the user manual may cause fire, electrical shock, or personal injury.
3. This appliance is not intended for use by persons (including children) with reduced physical, sensory or mental capabilities, or lack of experience and knowledge, unless they have been given supervision or instruction concerning use of the appliance by a person responsible for their safety.

## Operation Safety

1. Place the appliance on a flat, dry surface before use.
2. Do not immerse in water and any other liquids.
3. Do not use the appliance until the base is installed.
4. Do not insert your fingers, pencil and any other objects into the grilles while in operation.
5. Do not attempt to repair or modify any electrical or mechanical functions on the appliance. Doing so will void your warranty. All servicing should be performed by qualified personnel only.
6. Ensure that the fan is switched off from the supply mains before removing the guard.

## Electricity Safety

### WARNING:

1. Make sure that the voltage of your electricity supply is the same as that indicated on the appliance.
2. Always unplug before cleaning or leaving the appliance unused for a long period of time. Keep your hands dry when plugging/unplugging.
3. Do not operate any fan with a damaged cord or plug. Discard fan or return to an authorized service facility for examination and/or repair.
4. Do not run cord under carpeting. Do not cover cord with throw rugs, runners, or similar coverings. Do not route cord under furniture or appliances. Arrange cord away from traffic area and where it will not be tripped over.
5. WARNING: To Reduce The Risk Of Fire, Electric Shock Or Injury To Persons, Do Not Use Replacement Parts That Have Not Been Recommended By The Manufacturer (e.g. Parts Made At Home Using A 3D Printer).
6. WARNING: To Reduce The Risk Of Fire Or Electric Shock, Do Not Use This Fan With Any Solid-State Speed Control Device.
7. The appliance shall not be modified by users, such as by adding supplemental filters to the appliance.
8. This appliance employs overload protection (fuse). A blown fuse indicates an overload or short-circuit situation. If the fuse blows, unplug the product from the outlet. Replace the fuse as per the user servicing instructions and check the appliance. If the replacement fuse blows, a short-circuit may be present and the appliance should be discarded or returned to an authorized service facility for examination and/or repair.
9. This appliance has a polarized plug (one blade is wider than the other). To reduce the risk of electric shock, this plug is intended to fit in a polarized outlet only one way, If the plug does not fit fully in the outlet, reverse the plug. If it still does not fit, contact a qualified electrician. Do not attempt to defeat this safety feature.

# FOR HOUSEHOLD USE ONLY

## READ AND SAVE THESE INSTRUCTIONS

### Gentle Reminder:



Check the appliance regularly and refer to TROUBLESHOOTING or contact our customer support if it shows any of the following signs:

- Power cord or plug is damaged.
- Loud noise, unusual smell or excessive heat.

### Specifications

Model No.	DR-HPF020S
Input	AC 120V~60Hz
Rated Power	36W
Battery Type	AAA

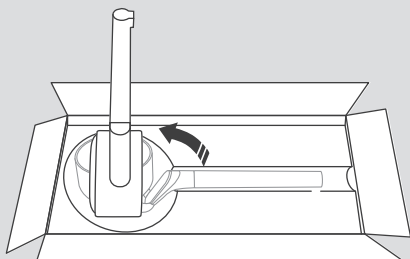
# ASSEMBLING YOUR APPLIANCE

# 02

## Assembly Instructions

When using the appliance for the first time, remove the wraps and attach the parts by following the steps below.

1



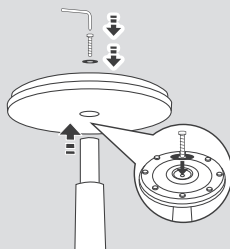
Turn the fan body upside down.

2



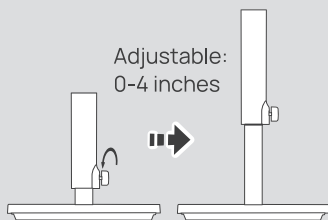
Install the short pedestal into the fan body column by rotating the pedestal until tightened.

3



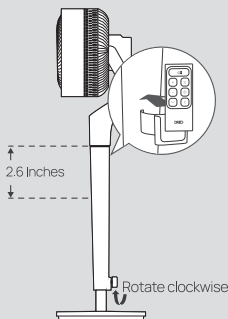
Push the column into the base, then thread the screw through the flat washer and use the included screwdriver to drive the screw into the bottom of the column.

4

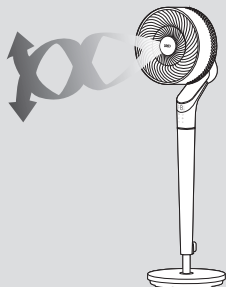


Hold the main body while rotating the adjustment collar counterclockwise to raise or lower the pedestal air circulator fan to the desired height.

5



Tighten the adjustment collar and install the remote control holder.

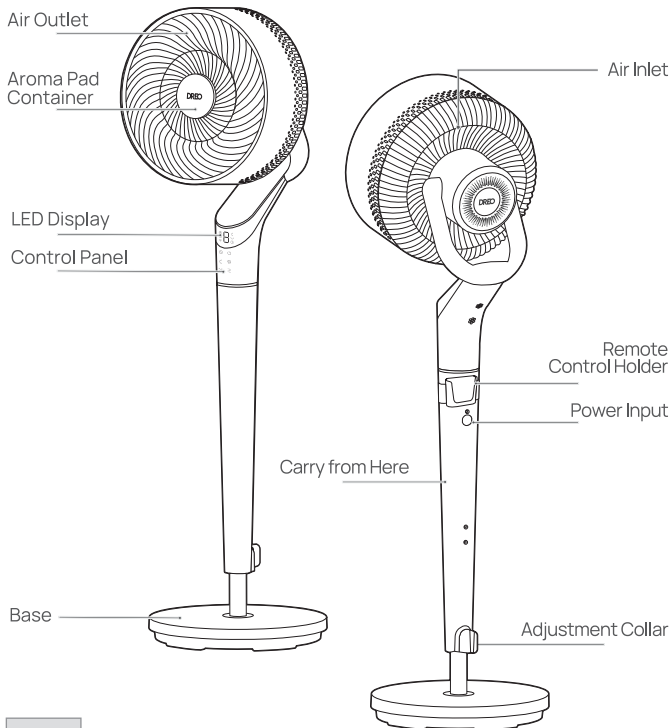


## CAUTION

- **DO NOT** operate the air circulator fan if the base has not been installed.
- Please exercise caution and handle the base with care during installation.
- **ONLY** carry the fan by holding the pedestal column.
- **DO NOT** place your hands behind the fan head while it is oscillating.



# Package Contents



# CONNECTING TO YOUR APPLIANCE

# 03



Before connecting the appliance to your mobile device, please scan the QR code on the left or go to the app store and search “DREO”, then select and download the app.






Look for “TurboPoly™ Fan 350S” when connecting your new appliance.



You can use the DREO app to connect your appliance to **Amazon Alexa** or **Google Home**. Please follow the in-app instructions to set up your voice assistant.

NOTE: You must create a DREO account to access voice assistants.

- 1 Launch DREO and sign in or create account by following in-app instructions.
- 2 Enable Bluetooth on your mobile device and plug in your appliance.
- 3 Hold  for 5 seconds to start WiFi connection settings.  
(Tip: The WiFi icon  will keep flashing when pairing.)
- 4 Tap+ **Add Device** and select **TurboPoly™ Fan 350S**.
- 5 Follow in-app instructions to complete WiFi connection.
- 6 You're now ready to control the appliance on your app.  
(Tip: To restart connection settings, hold  again for 5 seconds)

# KNOWING YOUR APPLIANCE

# 04

## Control Panel



### Power Button

- Turn power on/off.
- Long press for 10 seconds to reset to factory settings.



### Fan Speed Button

- 1-9 levels-Turbo.



### Mode Button

- Switch between Normal/Auto/Turbo Mode.
- Long press for 3 seconds to mute/unmute.



### Timer Button

- Select to set a timer (0-8h).



### Vertical Oscillation Button

- Sweep airflow vertically (0°/30°/60°/90°).
- Long press for 3 seconds to activate/deactivate fan repositioning.



### Horizontal Oscillation Button

- Sweep airflow horizontally (0°/30°/60°/90°/120°)
- Long press for 5 seconds to start network settings and device pairing.

## LED Display



Auto Mode



Turbo Mode



WiFi Connection



Fan Speed/Timer  
Hour



Vertical  
Oscillation



Horizontal  
Oscillation

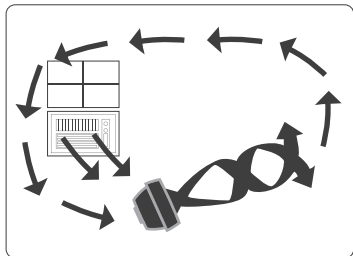


Timer

# USING YOUR APPLIANCE

# 05

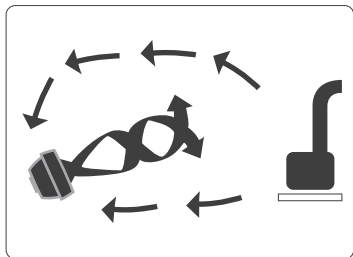
## Getting the Most out of Your Air Circulator



### Summer:

#### Use with Air Conditioner

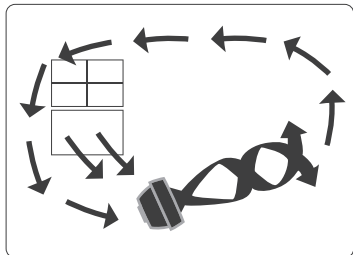
Position the air circulator in front of your AC to circulate cold air and provide better cooling.



### Winter:

#### Use with Heater

Send the heat to corner of the room and circulate warm air faster.









### Spring & Fall:

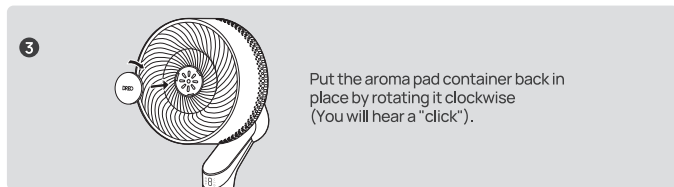
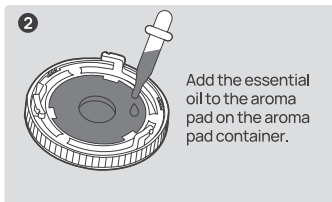
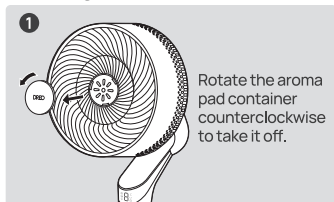
#### Circulation

Make the indoors as fresh and pleasant as the outdoors.

## Working Modes (Press on the remote)

	<b>Normal Mode</b> Fan runs at the fixed speed.
	<b>Auto Mode</b> Fan automatically increases speed when room temp is higher and decreases speed when temp is lower.
	<b>Turbo Mode</b> Fan runs at the maximum speed.
	<b>Natural Mode</b> <b>(Available in the DREO app)</b> Fan speed goes up and down intermittently to replicate the natural breeze.
	<b>Custom Mode</b> <b>(Available in the DREO app)</b> Fan speed changes according to temperatures or time you desire.
	<b>Sleep Mode</b> <b>(Available in the DREO app)</b> Balance comfort and noise by automatically decreasing fan speed as you fall sleep.  If the fan speed is higher than 4, it will decrease two times at most, one speed every 30 minutes, then it will remain constant.  If the fan speed is 3 or lower it will remain constant.



## Adding Essential Oil



## Additional Features



### Child Lock

Long press  and  for 3 seconds to turn on/off Child Lock.

*Note: Child Lock doesn't apply to operations from the remote control. You can also turn off Child Lock by re-plugging in, resetting to factory settings.*



### Memory

If the fan is turned OFF or disconnected from power, it will operate under the previous settings (except the Timer setting) when it is turned ON again.



### Countdown Display

When long pressing buttons for Factory Reset, Child Lock, and Mute, a countdown will show on the display accordingly.



### Firmware Update

Check the firmware version on the DREO app and update regularly for the air circulator to work more efficiently.



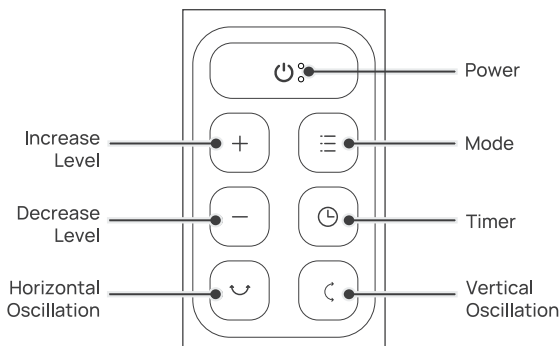
Display will show "U" during the update process.  
Do not operate until the update is completed.



### Display Auto Off

Display turns off after 1 minute (after 5 seconds in sleep mode). Wake up the display with any button.  
To disable this feature, please go to the DREO app.

## Remote Control

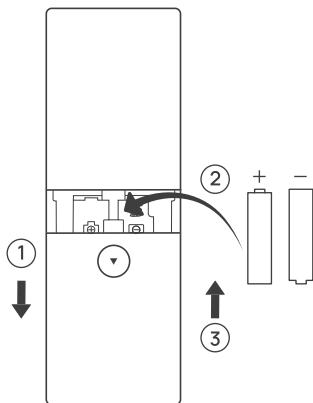


## Battery Replacement

1. Remove the battery cover in the direction indicated by the arrow.
2. Replace with two new AAA 1.5V batteries. Make sure that the positive (+) and negative (-) terminals are positioned correctly.
3. Push the battery cover back into place.

### **WARNING**

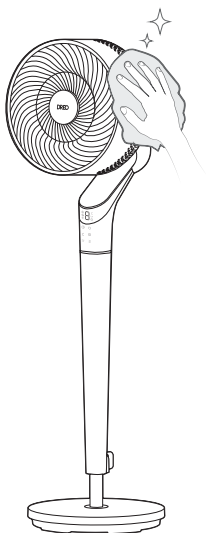
- Replace with new batteries of the same type when replacement is required.
- Remove the batteries when the remote control is unused for long period of time.
- Do not attempt to dismantle the batteries.
- Do not dispose the batteries in fire, batteries may explode or leak.
- Chemical burn hazard. Keep batteries away from children.
- Do not mix old and new batteries and Do not mix alkaline, standard (carbon-zinc) or rechargeable (ni-cad, ni-mh, etc.) batteries.





# CLEANING AND MAINTENANCE

# 06



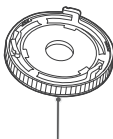
## Outer Surface

Gently wipe off the dust with a soft, dry cloth.

## Base

The base can be disassembled in the reverse order of assembly.

## Aroma Pad Container & Aroma Pad



Aroma Pad Container



Aroma Pad

Remove the aroma pad container. Take out the aroma pad, clean it with water and dry it up.

Put the dried aroma pad back into the aroma pad container, and install back in place.

## CAUTION



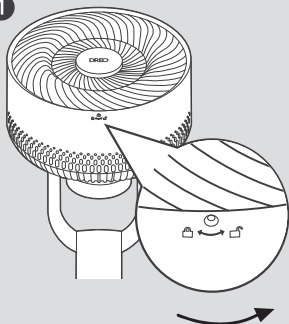
1. Always unplug the fan before any cleaning or maintenance to avoid the risk of fire, electric shock, or injury to persons.
2. Do not immerse in water or get water inside the motor housing.
3. Do not use any chemical agents when cleaning the fan.
4. Store in a cool, dry place and cover it to protect from dust.
5. It is recommended to disassemble and clean under professional guidance.
6. Clean the aroma pad container and aroma pad before adding new essential oils if it hasn't been used for a long time.
7. Keep the essential oils away from parts other than the aroma pad container (such as the grille or main unit) to avoid damage. If contact occurs, clean immediately or wipe with a dry cloth.



## WARNING

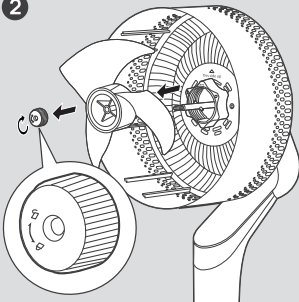
To reduce the risk of electrical shock and injury to persons, turn off and unplug the appliance before any cleaning and maintenance.

1



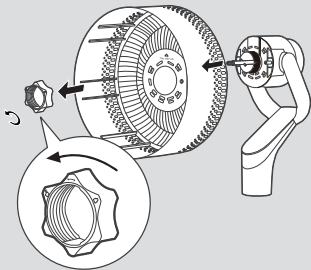
Remove the screw on the front grille, rotate the grille counterclockwise to take off.

2



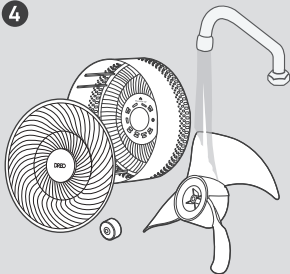
Remove the blade cap by rotating it as shown and take the blade assembly out of the shaft.

3



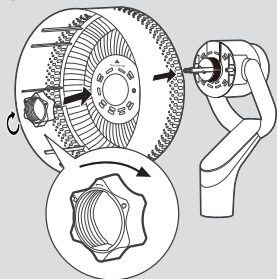
Remove the hexagram screw to take off the rear grille.

4



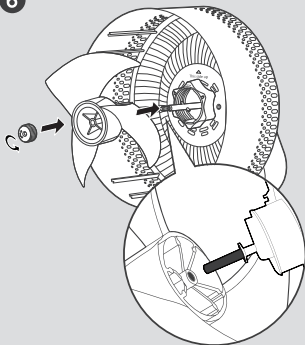
Rinse cap, blades, and grilles under running water or with a clean, damp cloth.

5



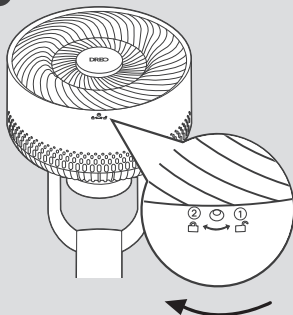
Dry up all parts, and screw the rear grill back into place by aligning the "This side up" arrow with the top hole, then put the hexagram screw back into place.

6



Insert the blade assembly back into the shaft by aligning the centers.

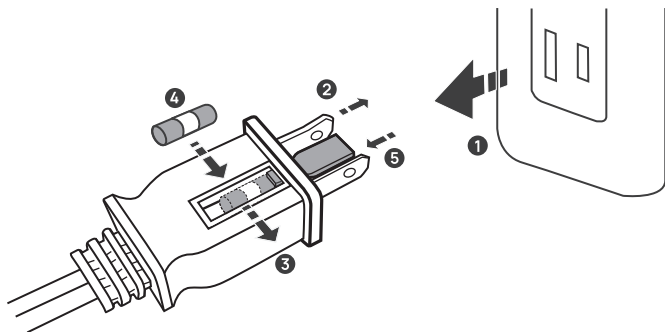
7



- ① Align the point on the front grille with the right point on the casing.
- ② Rotate the grille clockwise and install the screw back in place.

## User Servicing Instructions (Fuse)

This appliance features a fused safety plug that protects against overload or short-circuit situations. If the fuse blows, please cut off power and follow the below instructions or consult a qualified electrician.



- 1 Grasp plug and remove from the receptacle or other outlet device. Do not unplug by pulling on cord.
- 2 Open fuse cover. Slide open fuse access cover on top of attachment plug towards blades.
- 3 Remove fuse carefully. Push the fuse from the other side to remove the fuse.
- 4 Risk of fire. Replace fuse only with 5 Amp.125 Volt fuse.
- 5 Close fuse cover. Slide closed the fuse access cover on top of attachment plug.



### WARNING

Risk of fire. Do not replace attachment plug.  
Contains a safety device(fuse) that should not be removed.  
Discard product if the attachment plug is damaged.

## **My pedestal air circulator fan won't turn on!**

Make sure that the cord is connected to a powered outlet and the mains voltage corresponds with the voltage indicated on the pedestal air circulator fan.

## **My pedestal air circulator fan is shaky and wobbling!**

1. Place the pedestal air circulator fan on a flat, level surface.
2. Incorrect installation might also cause shakiness. Please refer to the assembly instructions in **page 4-5**.

## **My pedestal air circulator fan is making vibration and noise!**

1. Place the pedestal air circulator fan on a flat, level surface.
2. Be sure not to insert anything into the air inlet and outlet.

If your problem is not listed or still persists, please contact our Customer Support (see page 20).

# DREO CUSTOMER CARE

# 08

## 12-MONTH LIMITED WARRANTY

### What is Covered

DREO warrants to you that your product will be free from original defects in materials and workmanship for a period of twelve (12) months from the date of your purchase, when you use your product for intended purposes in accordance with this User Manual.

Please retain your proof of purchase. If you do not retain your proof of purchase, your warranty will start two (2) months from the date of manufacture printed on your product label.

### What is Not Covered

This limited warranty only applies to the original purchaser of your product and is non-transferable. This warranty is only valid if your product is used in the country in which you originally purchased it. In addition, this warranty will not apply, and DREO will not be liable for any costs, damages, or repairs, in connection with any of the following:

- Accidents or use of your product with inappropriate force;
- Damage or destruction caused by wrong voltage or unstable electric current;
- Normal wear and tear;
- Careless operation or handling, misuse, abuse, neglect, and/or failure to maintain or use your product in accordance with this User Manual;
- Any partially or completely altered, modified and/or dismantled products;
- Reduction in battery discharge time due to battery age or use (as applicable);
- Products with altered or removed serial numbers;
- Clearing any blockages from the product;
- Purchases from retailers and distributors not authorized by DREO to sell this product;
- Defects caused by or resulting from damages from shipping or handling by any third party not authorized by DREO to ship or handle your product; or
- Defects caused by or resulting from repairs, service, improper maintenance, or alteration to your product or any of its components by anyone other than a repair person authorized by DREO.

Any service and customer support that DREO provides to you under this limited warranty will not extend the duration of this limited warranty.

## Warranty Limitations and Exclusions

ANY IMPLIED WARRANTIES RELATING TO YOUR PRODUCT, INCLUDING BUT NOT LIMITED TO THE WARRANTY OF MERCHANTABILITY AND THE WARRANTY OF FITNESS FOR A PARTICULAR PURPOSE, ARE LIMITED TO THE DURATION OF THE LIMITED WARRANTY SET FORTH ABOVE AND ARE OTHERWISE DISCLAIMED.

THIS LIMITED WARRANTY SHALL BE THE SOLE REMEDY OF THE PURCHASER OR USER OF THE PRODUCT, AND DREO SHALL NOT BE LIABLE FOR AN ALLEGEDLY DEFECTIVE OR DAMAGED PRODUCT EXCEPT TO REPAIR OR REPLACE IT IN ACCORDANCE WITH THIS LIMITED WARRANTY. DREO WILL NOT BE LIABLE FOR SPECIAL, INCIDENTAL, INDIRECT, CONTINGENT, OR CONSEQUENTIAL DAMAGES OR LOSSES OF ANY NATURE THAT YOU MAY INCUR IN CONNECTION WITH YOUR PURCHASE OR USE OF YOUR PRODUCT.

Some jurisdictions do not allow limitations on how long an implied warranty lasts or the exclusion or limitation of incidental or consequential damages, so the above limitations or exclusions may not apply to you. This limited warranty gives you specific legal rights, and you also may have other rights which vary from jurisdiction to jurisdiction.

## Limited Remedies

If your product fails because of an original defect in material and/or workmanship during the warranty period, DREO will repair or replace (in DREO's sole discretion) your product.

To obtain warranty service on your product, contact us at support@dreo.com or at (888) 290-1688 (available from Monday-Friday, 9:00 AM-5:00 PM PST/PDT) for further instructions.

IN THE EVENT OF AN ORIGINAL DEFECT IN MATERIAL AND/OR WORKMANSHIP, TO THE EXTENT PERMITTED BY LAW, THE REMEDIES SET FORTH IMMEDIATELY ABOVE ARE YOUR SOLE AND EXCLUSIVE REMEDIES.

## FCC Statement

This device complies with Part 18 of the FCC Rules. Operation is subject to the following two conditions: (1) this device may not cause harmful interference, and (2) this device must accept any interference received, including interference that may cause undesired operation.

Any changes or modifications of this product is not expressly approved by the party responsible for compliance could void the user's authority to operate the equipment.

NOTE: This equipment has been tested and found to comply with the limits for a Class B digital device, pursuant to Part 15 of the FCC Rules. These limits are designed to provide reasonable protection against harmful interference in a residential installation. This equipment generates, uses and can radiate radio frequency energy and, if not installed and used in accordance with the instructions, may cause harmful interference to radio communications. However, there is no guarantee that interference will not occur in a particular installation.

If this equipment does cause harmful interference to radio or television reception, which can be determined by turning the equipment off and on, the user is encouraged to try to correct the interference by one or more of the following measures:

- Reorient or relocate the receiving antenna.
- Increase the separation between the equipment and receiver.
- Connect the equipment into an outlet on a circuit different from that to which the receiver is connected.
- Consult the dealer or an experienced radio/TV technician for help.

This equipment complies with FCC radiation exposure limits set forth for an uncontrolled environment. This equipment should be installed and operated with a minimum distance of 20cm between the radiator & your body. This transmitter must not be co-located or operating in conjunction with any other antenna or transmitter.

Model No.: DR-HPF020S

Rev\_1.0\_EN

## We're Here to Help!



(888) 290-1688 (Mon - Fri, 9:00 am-5:00 pm PST/PDT)



support@dreo.com



www.dreo.com



Intertek

[www.dreo.com](http://www.dreo.com)

## Looking for help?

Contact us to get expert support.



[support@dreo.com](mailto:support@dreo.com)



[\(888\) 290-1688](tel:(888)290-1688)



[www.dreo.com](http://www.dreo.com)

Mon - Fri, 9:00 am-5:00 pm PST/PDT