

User Manual

Wireless charger solar power bank CH311

Tech Specs

Material	PC+ABS
Input	5V/2A,9V/1A,9V/2A
Output	5W/7.5W/10W/15W
Input Port	Type-C
Wireless Charging Distance	<4mm
Applicable Mobile Phones	iPhone12,13,14,15 and above series

● Please first check the charging function as instructed below before installing the mount in your car. If you are unable to charge normally in the car, please also proceed with the following steps.



1. First find a power plug adapter with an A-port and connect it to our cable and the mount.
2. And then plug it into the power supply, use above iPhone 12-16 series (without phone case) to attach the wireless charger directly.
3. If the charging logo is displayed and the phone can be charged steadily, it means that our mount is working properly, please check if there is a problem with the USB cigarette car charger or if the power is too low.

If you find that the mount does not charge, please contact us immediately and we will certainly try our best to solve the problem for you.

Installation Steps



1. Unscrew the nut from the magnetic holder, pass through the ball head of the Dashboard Holder, clip the ball into the hole on the back of the magnetic holder, and tighten the nut clockwise.

2. Select the installation area of the Dashboard or Windscreen that is most suitable for the range of vision and driving position, and use an alcohol sheet to clean the area and keep it dry.

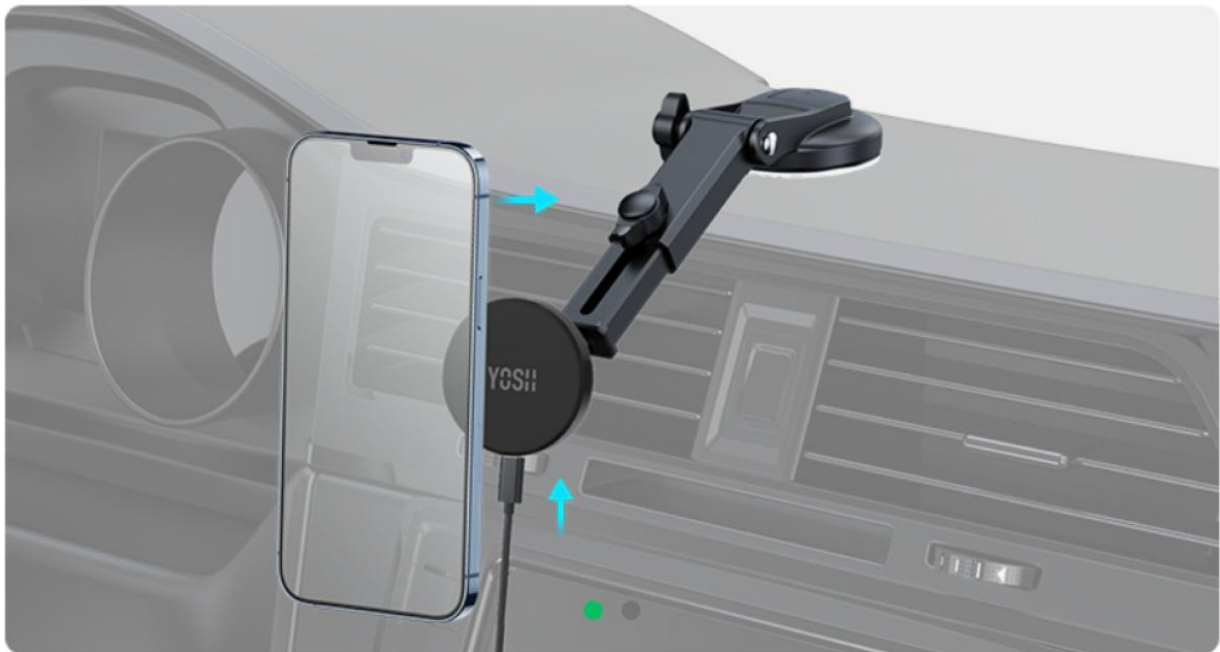
3. Open the switch, tear off the protective film of the suction cup, press the suction cup firmly for about 30 seconds, and then close the switch.

4. Do not use the holder within 24 hours after installation, and wait until the suction cup is fully absorbed.

5. To remove it, first unlock the suction cup switch, hold the arm of Dashboard Holder and pull it up to make the chassis enter the air, then gradually increase the force from the side to pull up the entire suction cup.

6. The phone can be rotated 360 degrees to adjust the angle you need.

Instructions of Usage:



1. When the power is turned on, put the IPHONE 12/13/14/15/16 series close to the holder, and the phone will be automatically adsorbed on the holder.

2. Highly-flexible ball-joint 360° rotation provides infinite viewing angles.

Status Indicator

Standby Mode: the blue light is always on after power on, the wireless charger enters standby mode.

Charging Mode: the blue light is off, the wireless charger enters charging mode.

Automatic FOD (Foreign Object Detection): intelligently identify foreign objects, such as coins, keys and other metal or magnetic objects, the blue light flashing.

Attention

1. Do not rotate the screw bolt excessively, otherwise, the holder will be damaged and cannot be used.
2. This magnetic wireless car charger mount is specially designed for iPhone16/15/14/13/12 series, suitable for iPhone13/12 Mini, iPhone16/15/14 Plus, iPhone16/15/14/13/12, iPhone16/15/14/13/12 Pro, iPhone16/15/14/13/12 Pro Max.
3. If you're using a phone case, please make sure to use the MagSafe case. This mount is not compatible with a phone case without MagSafe, which may weaken the magnetic and affect the wireless charging.

4. When used on the dashboard, it is only suitable for the flat dashboard surface, NOT suitable for curved, uneven, raised, folded corners, soft leather dashboards and dashboards with segmented dividers or cut lines.

5. Please check the stability of the suction cup base every time before driving. If it loose, please reinstalls.

6. Before reinstalling the holder, please wash the suction cups with warm water and dry thoroughly before proceeding with the installation steps. Otherwise, it may cause weak stickiness.

7. When the mobile phone is installed on the phone holder, please make sure that is in place.

8. Tips for Optimal Charging: For best performance, always use the provided USB cable. Ensure your car charger supports 18W output (QC2.0/3.0 or PD3.0/3.1) with at least 9V/2A.

9. Built-in USB-A/C ports in vehicles often have low output power and may not support fast-charging wireless products.

10. Please avoid violent use of plastic products. Do not place it in extreme environments (under too high or low temperature) to use.

11. This product contains small parts and should be kept away from children.

12. It is a normal phenomenon that the phone will naturally heat up during the charging process, but not a product quality problem.

13. If the use results in imprints on your phone or phone case, simply use a damp cloth to wipe and restore.

2. Extended Warranty

This product is guaranteed a 6-month warranty by YOSH. After registering as a member of YOSH through the link below, you can have the extended warranty up to 12 months.



Warranty Claim



Please note that YOSH is not responsible or liable for any damage incurred due to incorrect use, installation, or storage of this product.

3. Customer Support

We hope this product is in good working condition and to your satisfaction. In case of any problems or queries, feel free to contact us. We will get back to you within 24 hours.



Submit a Case



FCC Statement

This device complies with part 15 of the FCC rules. Operation is subject to the following two conditions: (1) this device may not cause harmful interference, and (2) this device must accept any interference received, including interference that may cause undesired operation.

Caution: Changes or modifications not expressly approved by the party responsible for Compliance could void the user's authority to operate the equipment.

NOTE: This equipment has been tested and found to comply with the limits for a Class B digital device, pursuant to part 15 of the FCC Rules. These limits are designed to provide reasonable protection against harmful interference in a residential installation. This equipment generates uses and can radiate radio frequency energy and, if not installed and used in accordance with the instructions, may cause harmful interference to radio communications. However, there is no guarantee that interference will not occur in a particular installation. If this equipment does cause harmful interference to radio or television reception, which can be determined by turning the equipment off and on, the user is encouraged to try to correct the interference by one or more of the following measures:

- Reorient or relocate the receiving antenna.
- Increase the separation between the equipment and receiver.
- Connect the equipment into an outlet on a circuit different from that to which the receiver is connected.
- Consult the dealer or an experienced radio/TV technician for help important announcement .

Radiation Exposure Statement

To comply with FCC RF exposure compliance requirements, this grant is applicable to only mobile configurations. The antennas used for this transmitter must be installed to provide a separation distance of at least 20 cm from all persons and must not be co-located or operating in conjunction with any other antenna or transmitter.