

Portable Projector



✕ User Manual ✕

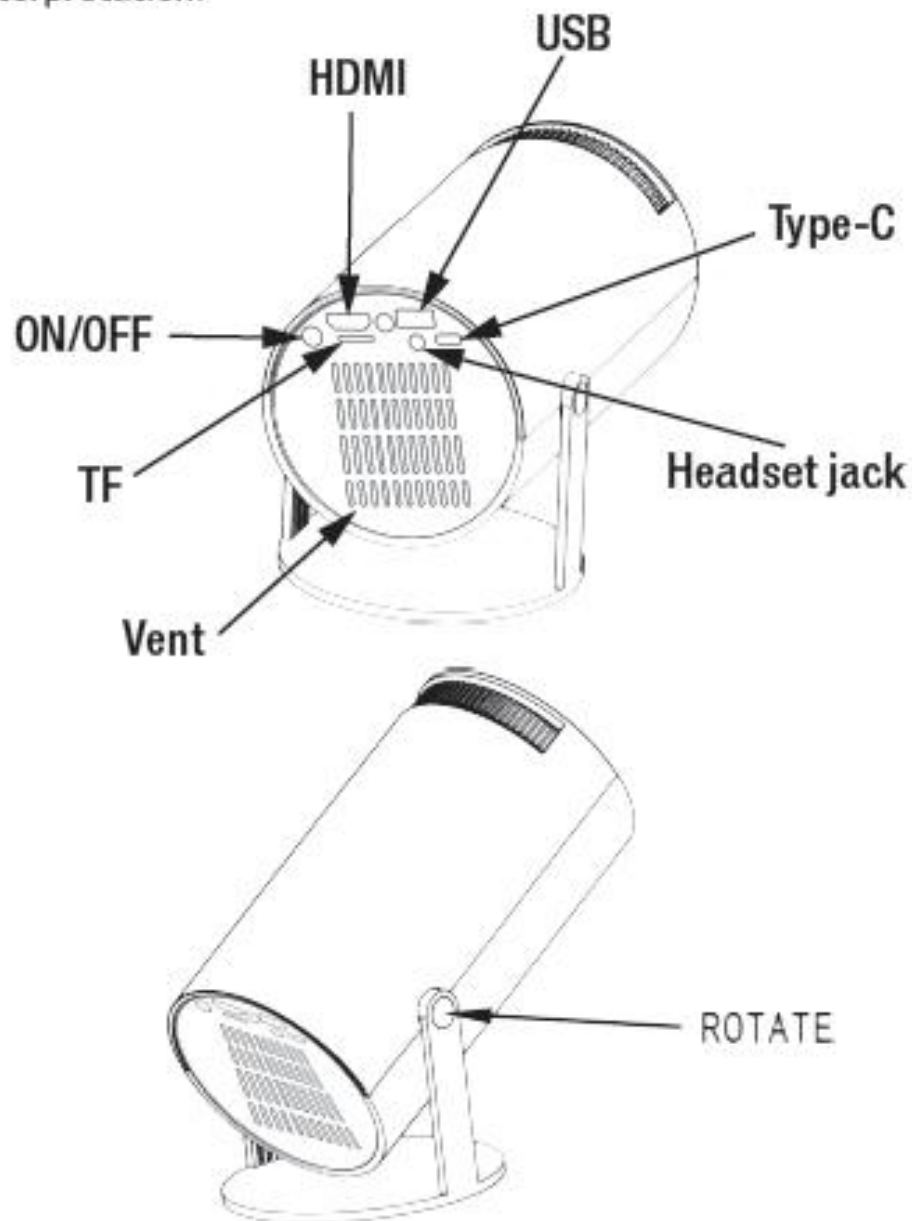
Attention

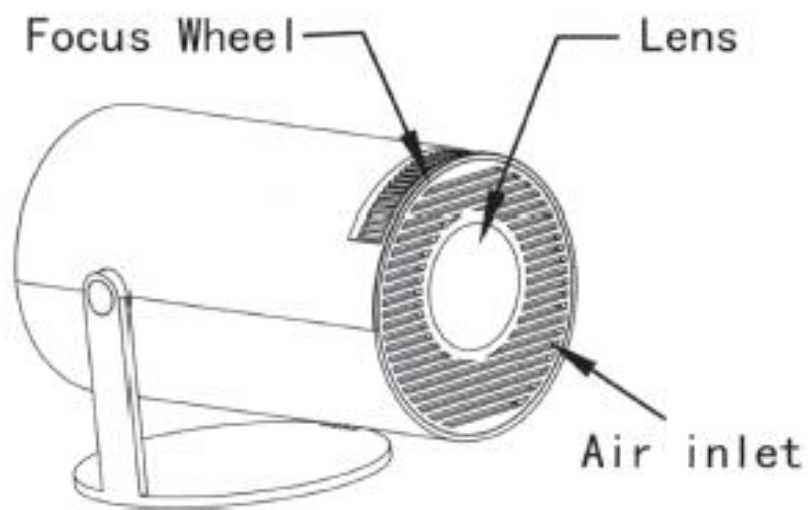
Please read this manual carefully before use and keep it for future reference.

- 1 .The projector is non dustproof or waterproof.
- 2.In order to reduce the risk of fire and electric shock, do not expose the projector to rain and fog.
- 3.Please use the original power adapter. The projector should work under specified rated power supply.
- 4.When projector is working, please do not look directly into the lens, the strong light will flash your eyes and cause slight pain. Children should use the projector under the supervision of adults.
- 5.Do not cover the vents of projector. Heating will reduce the life of projector and cause danger.
- 6.Regularly clean projector vents, or dust may cause cooling malfunction.
- 7.Do not use the projector in greasy, damp, dusty or smoky environment. Oil or chemicals will cause malfunction.
- 8.Please handle with care during daily use.
- 9.Please cut off the power if the projector is out of use for long time.
- 10.Non-professionals are forbidden to disassemble the projector for testing and maintenance.

Structure Description

This manual is for reference only. It is subject to change without prior notice. Hotack reserves the right of final interpretation.





Remote Component and Functions



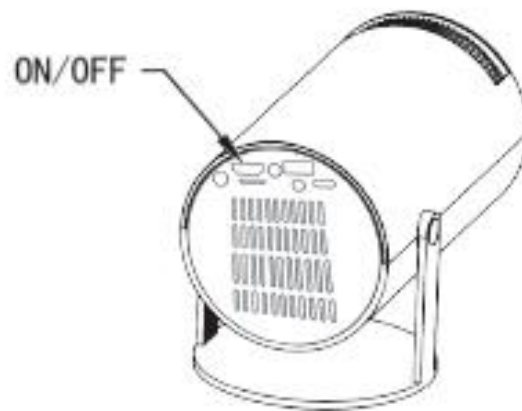
Power ON/OFF

Power On

Long press Power button on projector for 3 seconds.

Power Off

When the projector is power-on, press and hold the power button on the projector or the remote control for 3s to power off.



Focus Adjustment

When projector is on, adjust sharpness by focus wheel on the back of projector.

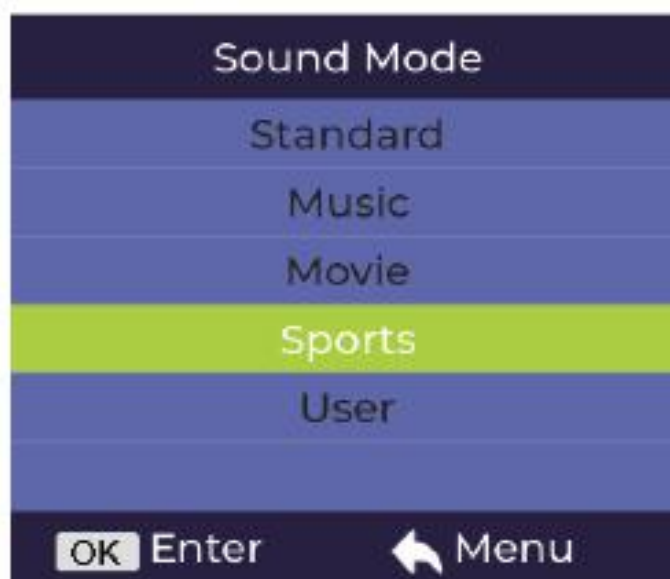


Launcher Ui



Image Mode

Setting - Picture Settings - Image Mode > To select different mode according to your application scenario. Four modes are available < Standard, Dynamic, Mild, User >.



Color Temperature

Setting - Picture Setings - Color Temperature > To select different mode according to your application scenario. Three modes are available < Cold, Standard, Warm >.



OSD Language

Setting - System Settings - OSD Lang > To choose your language.



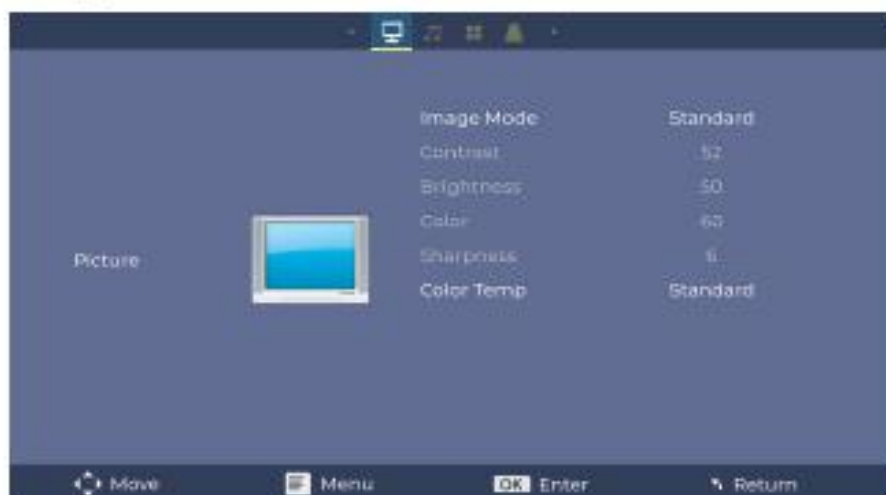
Home Background

Setting - System Settings - Home Background > Choose the Home Background you want < Blue, Dark blue, White, Grey >.



Projector Mode

Setting - System Settings - Flip > To select different mode according to your application scenario. Four modes are available < Front Table, Front Ceiling, Back Table, Back Ceiling >.



Media Player

Insert the U disk and click the USB icon on the homepage to read the local video & music & photo & Book.



HDMI Signal

Connect projector and external sourcing device by HDMI cable. Enter HDMI on the homepage, the signal from the sourcing device will be transmitted to projector and cast out.



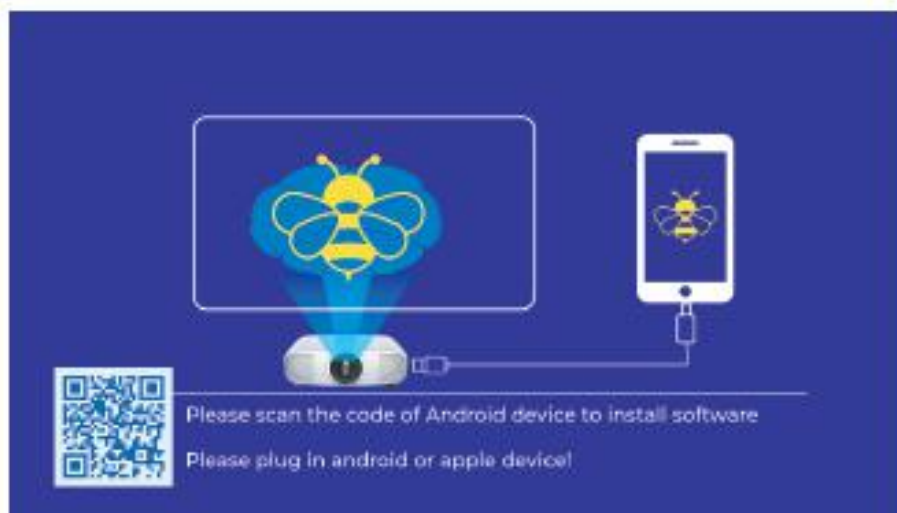
Wired Screen

iOS connect by Cables

1. Connect your iPhone to the projector via the original iPhone charging cable. (Cable has a USB port and Lighting Port)
2. Please click "Trust" when the iPhone shows a pop-up window.
3. Enter device password.

Android cable is on the same screen

1. Connect your Android phone to the projector via the original Android phone cable. (The data cable must have a USB port and be connected to a computer to read the contents of the phone)
2. Install the APK required for the same screen according to the prompt, or scan the two-dimensional code on the projector screen interface to download and install.
3. After the APK is installed successfully, the same screen function can be realized.
4. Note that when Android phones are on the same screen, the sound is coming from the phone, not the projector.



【Safety instructions】

- Please pay attention to important information related to the operation and maintenance of the projector. You should read this information carefully to avoid problems. Following safety instructions will increase the life of projector.
- Please consult the qualified personnel for installation and repair services, and do not use damaged wires, accessories and other peripherals.
- Projector should be kept away from flammable, explosive, strong electromagnetic interference (large radar stations, power stations, substations) ,etc. Strong ambient light (avoid direct sunlight), etc.
- Do not cover projector vents.
- Please use the original power adapter.
- Keep adequate ventilation and make sure vents are not covered to avoid projector overheating.
- When projector is working, please do not look directly into the lens, the strong light will flash your eyes and cause slight pain.
- Do not bend or drag the power cord.
- Do not put power cord under projector or any heavy objects.
- Do not cover other soft materials on power cord.
- Do not heat the power cord.
- Avoid touching power adaptor with wet hands.

【Disclaim】

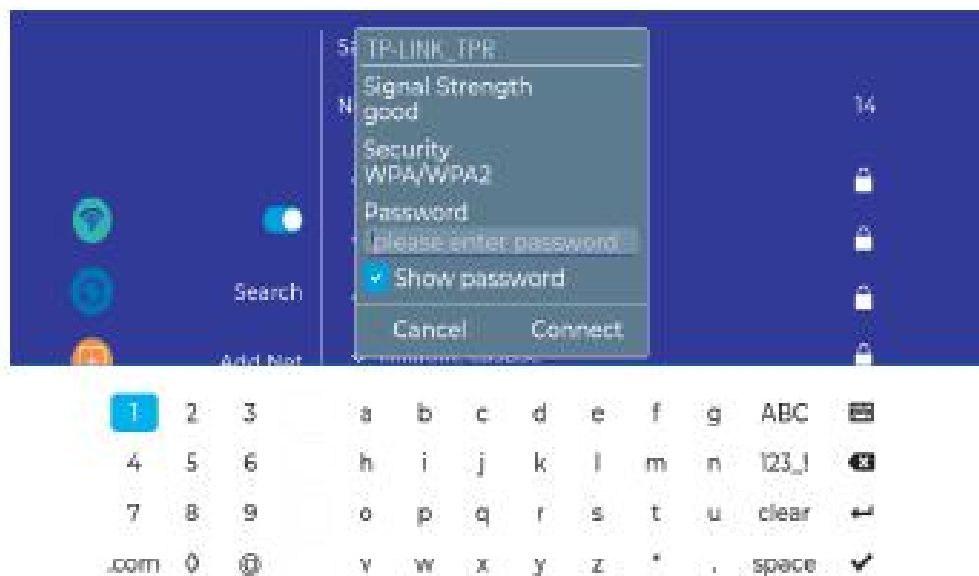
This manual is general instructions, The pictures and functions in this manual should subject to the actual product. Our company is devoting to improve product performance, we reserve the right to modify product functions and interface described in this manual without notice.

Please keep your device properly. We are not responsible for any loss caused by wrong operation of software/hardware or repairing or any other reasons. We are not responsible for any loss of any third party claims.

This manual has been carefully checked by professional engineer, please understand for any inevitable omissions.



Wireless connectivity 2.4G



connect to WiFi



Wireless screen casting

FCC Statement:

This device complies with part 15 of the FCC Rules. Operation is subject to the following two conditions:

- (1) This device may not cause harmful interference, and
- (2) this device

must accept any interference received, including interference that may cause undesired operation. This

equipment has been tested and found to comply with the limits for a Class B digital device, pursuant to

part 15 of the FCC Rules. These limits are designed to provide reasonable protection against harmful

interference in a residential installation. This equipment generates, uses and can radiate radio frequency

energy and, if not installed and used in accordance with the instructions, may cause harmful interference

to radio communications. However, there is no guarantee that interference will not occur in a particular

installation. If this equipment does cause harmful interference to radio or television reception, which can

be determined by turning the equipment off and on, the

user is encouraged to try to correct the interference by one or more of the following measures:—Reorient

or relocate the receiving antenna.

—Increase the separation between the equipment and receiver.

—Connect the equipment into an outlet on a circuit different from that to which the receiver is connected.

—Consult the dealer or an experienced radio/TV technician for help.

Caution: Any changes or modifications not expressly approved by the party responsible for compliance could void the user's authority to operate the equipment.

This equipment complies with FCC radiation exposure limits set forth for an uncontrolled environment.

This transmitter must not be co-located or operating in conjunction with any other antenna or transmitter. To satisfy FCC RF exposure requirements, a separation distance of 20cm or more should be

maintained between the antenna of this device and persons during device operation. To ensure compliance,

operations at closer than this distance is not recommended.



Attention:

Please do not look directly into the lens when projecting to prevent the strong light doing harm to your eyes. Kids should use the projector under the supervision of adults.