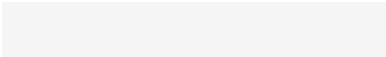
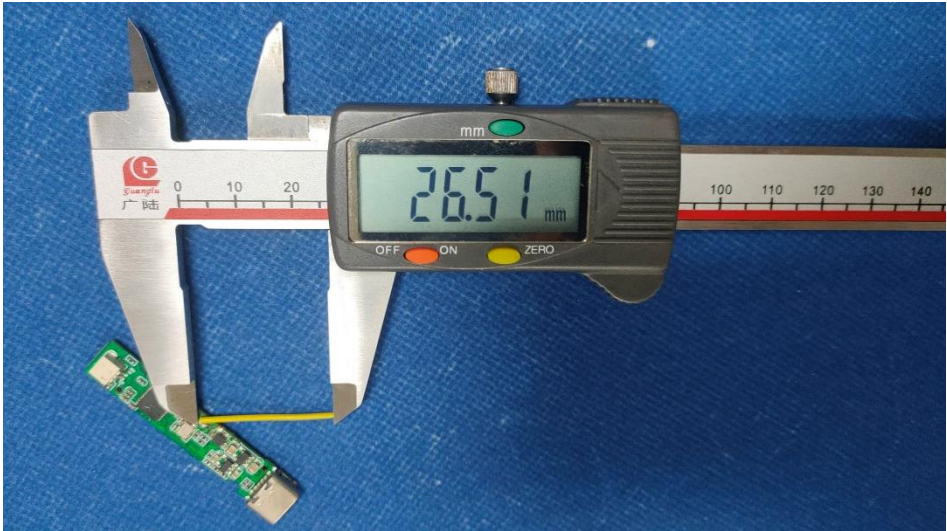


1. Antenna Description:

Antenna type	Internal antenna
Model	H1201
Frequency range	2400-2500MHz
Manufacturer	Guangdong Hongkangyi Medical Technology Co., Ltd.
Address	Room 418, Building B, Sai Bino GMP Factory, No. 19 Keji Zhongyi Road, Malin Community, Yuehai Subdistrict, Nanshan District, Shenzhen, Guangdong, China
ANT Peak Gain	0.5 dBi

2. Antenna Photo:



3. Test Equipment & Conditions

3.1 Test instrument

VSWR is tested using Agilent E5071B connected to a hand mechanism, and the status is free space.

3.2 Test environment and methods

Dark room specifications: ETS-743

TD-SCDMA test equipment: StarPoint SP6010/Agilent 8960

LTE-TDD/FDD-SCDMA test equipment: StarPoint SP8011/CMW500

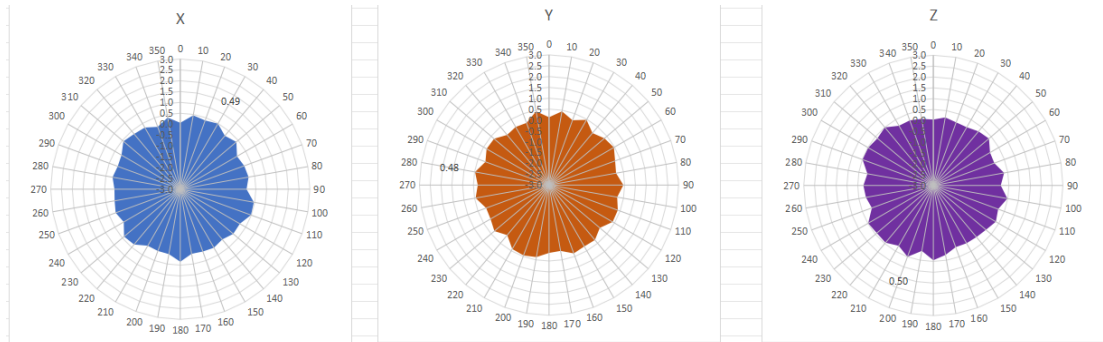
WCDMA/GSM/CDMA test equipment: Agilent 8960

Passive efficiency testing equipment: Agilent Technologies E5071B

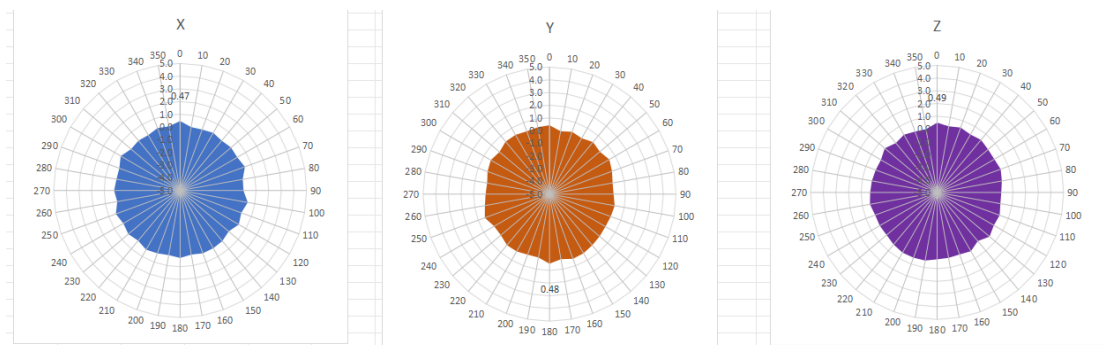


4 . Antenna Radiation Pattern

2400MHz



2450MHz



2500MHz

