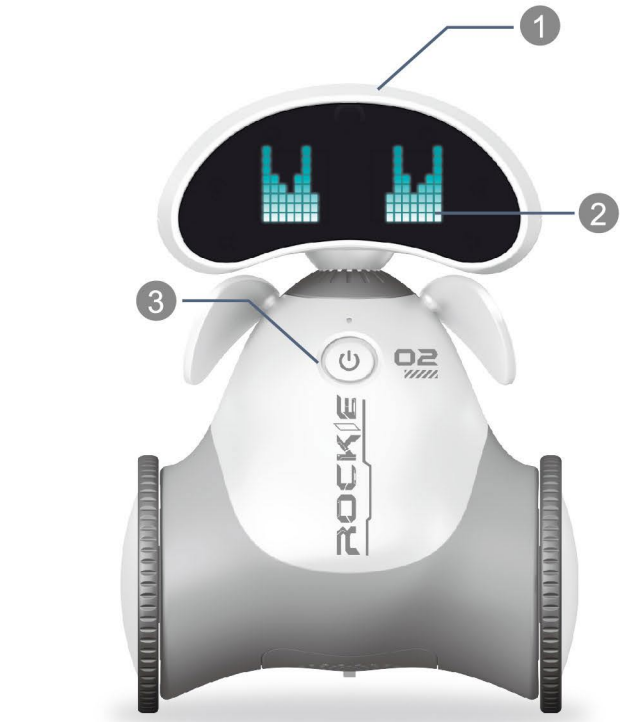
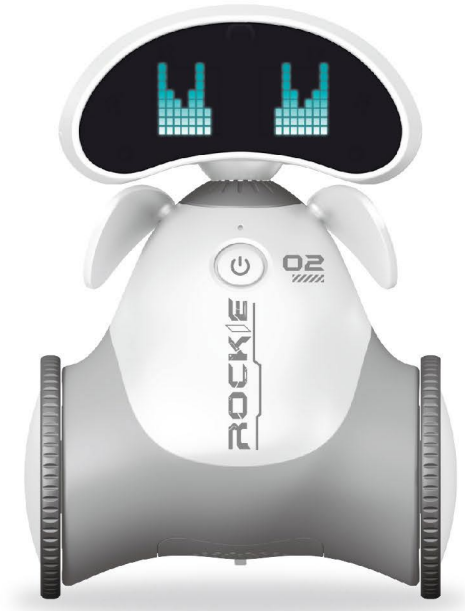


ROBOTICS

HI! I AM ROCKIE, A ROBOT FROM THE PLANET BACA.



- ① Touch Area ② LED Light
③ Switch

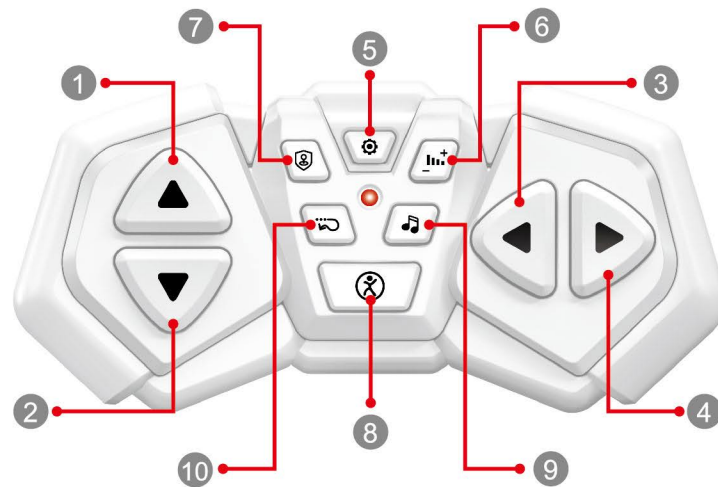
01



- ④ Charging Port

02

Remote Control Introduction

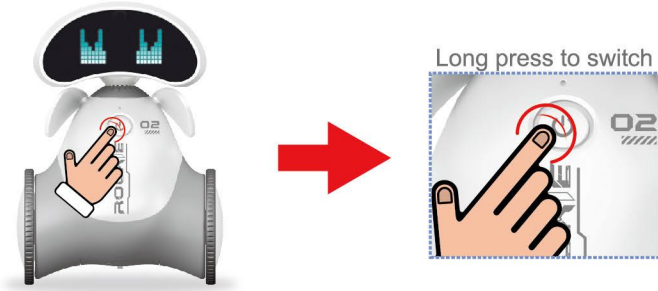


- ① Forward ② Backward
③ Turn Left ④ Turn Right
⑤ Programming ⑥ Volume
⑦ Dance ① ⑧ Dance ②
⑨ Music ⑩ Demo Mode

03

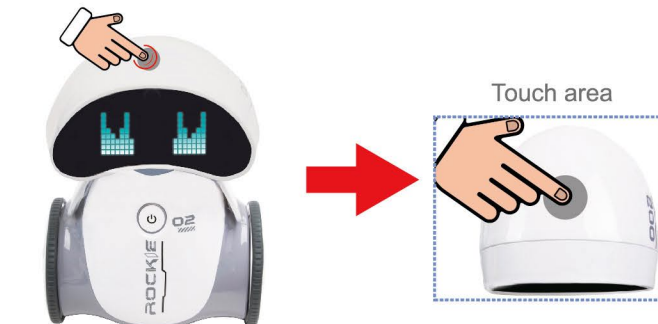
Control Your Robot

- 1.Long press to power on
2.Long press to power off



- 3.Rest State
Every 1 minute play a standby prompt sound, 4 minutes after the prompt shutdown sound shutdown sleep.

- 4.Lower power alert
5.Touch function

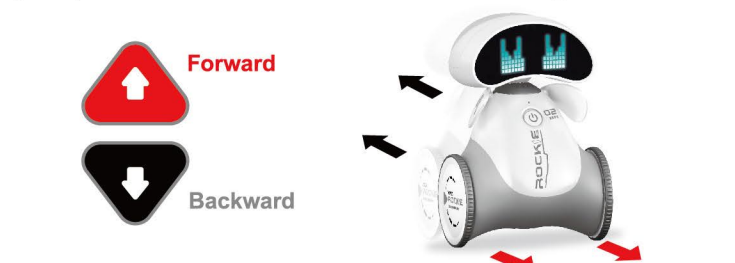


04

6.Forward/Backward

Forward: the single key has been long press the robot has beenforward, release to stop; Hold the forward button long and then long The left and right keys can be combined to control the robot's steering.

Backward: press the single key and hold the robot back all the time, release and stop; Hold the back button long and press againThe left and ight keys can be combined to control the robot's steering.



7.Turn Left/Turn Right

Turn Left: press and hold the robot left turn, release and stop; Hold the left turn button long and press longThe forward and back keys can be combined to control the robot's steering.

Turn Right: press and hold the robot to the left, release and stop; Hold the right turn button long and press again The forward and back keys can be combined to control the robot's steering.



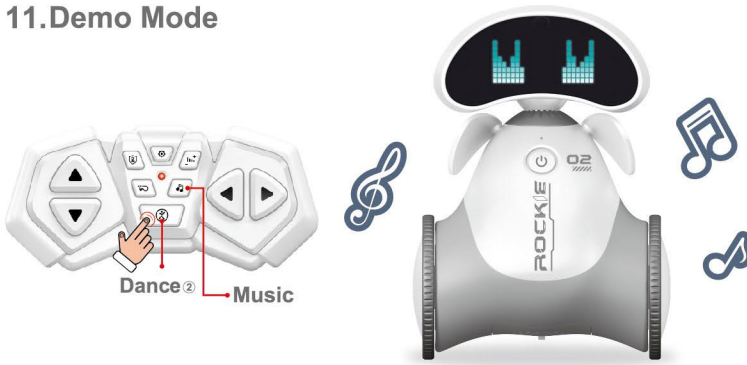
05

8.Dance①

9.Dance②

10.Music

11.Demo Mode



12.Programming

Press the programming button to start "Programming Mode", and then start programming the required actions, up to 30 programs Actions; Press the programming button again to end programming. Then the robot will play as what you've programmed. If there is no programming content or programming is full Sound prompts.

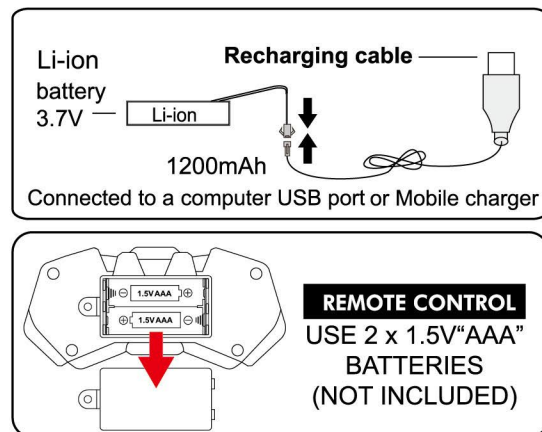
13.Volume

Press the volume button to change the volume as shown below (100% volume by default)

- ① 100% ② 75% ③ 50% ④ 25% ⑤ 50% ⑥ 75%

06

Battery diagram



Each vehicle includes 1 x 3.7V Li-ion Battery and USB charge line
The Remote Control requires 2x1.5V AAA batteries (Not Included)
For best Performance use only Alkaline or Rechargeable NiMH Batteries
Observe correct polarity when inserting batteries
Use only Alkaline or Rechargeable Batteries-Do Not Mix Types!
Remove discharged batteries from the Remote Control immediately
Remove batteries from Remote Control when toy is stored

BATTERY INSTRUCTION:

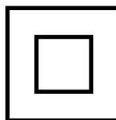
KEEP THESE INSTRUCTIONS FOR FUTURE REFERENCE BECAUSE THEY CONTAIN IMPORTANT INFORMATION.
DO NOT DISPOSE OF BATTERIES IN FIRE;THEY MAY LEAK OR EXPLODE.
DO NOT MIX ALKALINE,STANDARD(CARBON-ZINC) OR RECHARGEABLE(NICKEL-CADMIUM) BATTERIES.
DO NOT MIX OLD AND NEW BATTERIES.
USE ONLY BATTERIES OF THE SAME OR EQUIVALENT TYPE AS RECOMMENDED BY THE MANUFACTURER.
BE SURE TO INSERT BATTERIES WITH CORRECT POLARITIES AND ALWAYS FOLLOW MANUFACTURERS INSTRUCTIONS.
REMOVE EXHAUSTED BATTERIES FROM PRODUCT PROMPTLY.
DO NOT SHORT-CIRCUIT SUPPLY TERMINALS.
REMOVE BATTERIES BEFORE STORAGE OR EXTENDED PERIODS OF NON-USAGE.
CLEAN THE CONTACTS ON THE BATTERIES AND THE DEVICE PRIOR TO BATTERY INSTALLATION.
RECHARGEABLE BATTERIES ARE NOT RECOMMENDED FOR USE IN THIS PRODUCT.

WARNING:

This toy produces flashes that may trigger epilepsy in sensitized individuals.

07

This toy is only to be connected to equipment bearing either of the following symbols:



- Non-rechargeable batteries are not to be recharged,
- The rechargeable batteries should be charged under adult supervision
- This toy contains batteries that are non-replaceable
- The charger used with the toy is to be regularly examined for damage to the cord,plug,enclosure and other parts,and that, in the event of such damage, the toys must not be used with this charger until the damage has been repaired.

WARNING:
CHOKING HAZARD - Small parts.
Not for children under 3 years.

PRECAUCIONES:
PELIGRO DE AHOGARSE. Contiene partes pequeñas.
No recomendado para niños menores de 3 años.

NOT SUITABLE FOR CHILDREN UNDER 3 YEARS DUE TO SMALL PARTS
هشدار: برای کودکان زیر ۳ سال مناسب نیست. دارای قطعات کوچک است.
تذکره: این اسباب بازی برای کودکان زیر ۳ سال مناسب نیست. قطعات کوچکی دارد.
COUNTRY OF ORIGIN: CHINA
بازو سازنده: چین

صنعت وفقا للمواصفات والمعايير العالمية
Tested according to international standards

MANUFACTURER: SHANTOU XINBIDA EARLY EDUCATION TECHNOLOGY CO., LTD.
MANUFACTURER ADDRESS: Floor 2, (Rear Plant Area) Xinning Technology Toy Factory, Fengxiang Road,Chenghai District, Shantou City, Guangdong Province, China
Identification of the EU importer
Company Importe:V.CHRISTAKOPOULOS S.A.
Address:SOULIOU 6,136 74 AHARNES, GREECE
The package must be retained since it contains important information.
Maintenance:please wipe and clean with a soft cloth

SPECIFICATIONS COLOURS AND CONTENTS MAY VARY FROM ILLUSTRATIONS.



08

Product parameter

Product name: Intelligent robot
Product material: Plastic and electronic components
Battery capacity: 1200mAh
Battery type: Rechargeable Battery
Rated input: 3.7V

Key	Function description
Switch	1.Long press to power on 2.Long press power off
Touch key	Voice prompt
Loudspeaker	High fidelity sound
USB charging	Connect the USB cable to charge
Programming	Enter programming
Go the rounds	Move forward in an S shape
Volume	Cycle up the volume, down the volume
Shifting key	1.Forward/backward moving key - front/back directi on gliding 2.Left \ right turn moving key - left \ right direction taxi
Music	Play music, LED expression show - sound column undulation
Dance ①	Dynamic music, LED expression show - sound column undulation, Robot moving rotation
Dance ②	Dance music plays and the robot moves and spins

Safety precautions

- The equipment should not be exposed to water droplets or splashes, and liquid filled objects such as vases should not be placed on the equipment;
- If the battery is not replaced properly, there is a risk of explosion, and only the same type or equivalent type of battery can be replaced;
- The battery (battery pack or combination battery) shall not be exposed to similar overheating environment such as sun/fire;
- Please check the USB connector regularly and replace it in time if it is damaged;
- The robot can only use recommended transformers;
- Do not use while charging;
- The manual contains important information, please keep it properly for future use;
- Maintenance method: Please use tissue or cloth to wipe, do not wash.

09

ROBOTICS

HI! I AM ROCKIE, A ROBOT FROM THE PLANET BACA.