

PET SMART FEEDER

HIGH DEFINITION VIDEO MANUAL



Before using the product, please read this manual carefully and keep it in a safe place.

Feeding suggestions

(Dog) Weight	Normal Activity	Extra Activity	Body weight	Normal activity	Normal activity Extra Activity
2kg	39g	45g	8kg	111g	128g
4kg	66g	76g	10kg	131g	152g
6kg	89g	104g	12kg	150g	174g

(Dog) Weight	Normal Activity	Extra Activity	Body weight	Normal activity	Normal activity Extra Activity
14kg	178g	206g	20kg	233g	270g
16kg	197g	228g	22kg	250g	290g
18kg	197g	228g	24kg	267g	309g

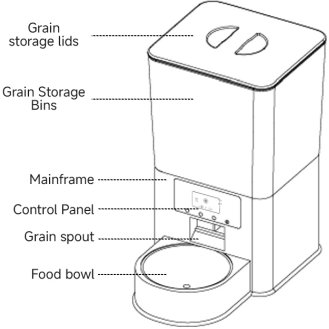
(Dog) Weight	Normal Activity	Extra Activity	Body weight	Normal activity	Normal activity Extra Activity
26kg	274g	318g	36kg	350g	405g
28kg	290g	336g	38kg	364g	422g
30kg	305g	353g	40kg	379g	439g
32kg	320g	371g	42kg	393g	455g
34kg	335g	388g	44kg	407g	471g

(Cat) Months old	1-2 months	2-4 months	4-6 months	6-7 months	8-12 months
Daily Recommended Amount	20-30g	30-50g	50-70g	70-80g	80-90g

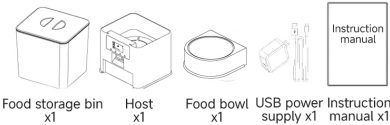
(Cat) Weight	2-3kg	3-5kg	5-7kg	Pregnant female cat	Lactating female cat
Daily Recommended Amount	25-35g	35-55g	55-85g	70-110g	120-190g

If you find that your pet is unable to digest the food in the bowl, please reduce the number of meals and servings set out appropriately.

Product Introduction



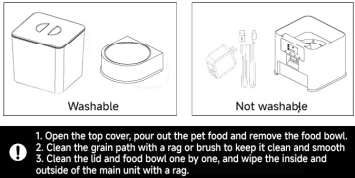
Product accessories list



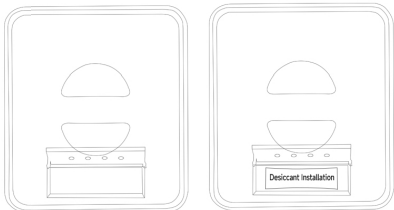
Product Specification

Product Name	Pet Smart Feeder (Video Version)
Suitable for pets	Cats, puppies, rabbits, chinchillas, squirrels and other small animals
Rated Voltage	5V 1A
Product power	10W
Power supply type	5V external power supply
Material	ABS+PC
Weight	1.6kg
Capacity	5L
Applicable Grain	Recommended to use 5-16mm dry non-sticky pet food
Grain Grams	~10g each (pet food size and density of different specific please refer to the food out of the weight-bearing standards)
Product Size	Length*Width*Height: 275*190*340mm
Standard	GB4706.1

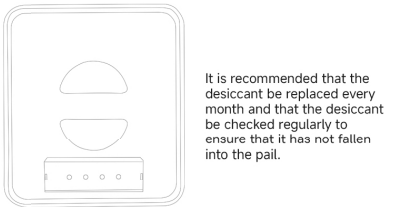
Care and Maintenance



Desiccant Installation



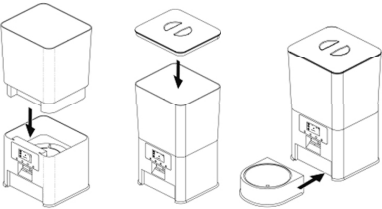
1. Open the lid 2. Put in the desiccant



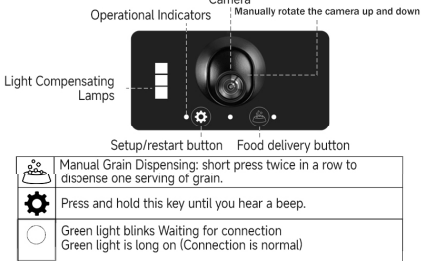
It is recommended that the desiccant be replaced every month and that the desiccant be checked regularly to ensure that it has not fallen into the pail.

Product assembly and accessories installation

1. Place the grain storage bin into the main unit, cover the storage lid and insert the food bowl.

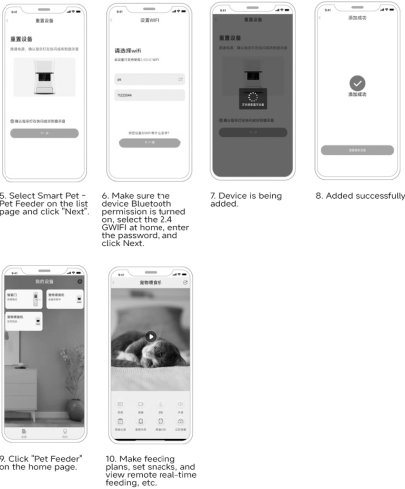


Interface Description



Manual Grain Dispensing: short press twice in a row to dispense one serving of grain.
Press and hold this key until you hear a beep.
Green light blinks Waiting for connection Green light is long on (Connection is normal)

Dingdong APP Usage Guide



Q&A Troubleshooting

Q:When the mobile app sends a feeding request, no food falls to the food tray.
A:The feeder carousel is rotating but no food is falling, please check if the food storage bucket is empty.
Q:In case the power cord is chewed off by the pet, will it hurt the pet?
A:The product equipment adopts 5V safe voltage, it will not hurt pets electrically.
Q:Why can't the main unit be rinsed with water directly?
A:There are precise electronic parts and circuit boards inside the mainframe, so if you need to clean it, you only need to wipe the mainframe with wet wipes after power off.

Safety instructions and precautions

1. Please store this product in a cool and dry place, and do not use it for any other purpose except feeding.
2. Please do not drop anything other than dry pet food into the storage bin, otherwise it will cause abnormal use or even cause pet safety problems.
3. Please place the feeder horizontally, and it is recommended to place it against the wall to prevent tripping over wires or being torn by pets.
4. Please do not intrude the body and power supply into the water, because it will damage the electronic components.
5. Check the device after installation, if there is water on the power cord or plug, please do not power on.
6. Children must be used under the guidance of an adult.
7. Be sure to unplug the unit before installing and removing spare parts.
8. If you do not use the product for a long time, please remember to unplug it.
9. Do not attempt to repair or modify the pet feeder.
10. If you need to use an extension cord, use an extension cord with the same rating.
11. Using accessories that are not supplied or recommended by the original factory will result in an unsafe situation.
12. Please read carefully the precautions listed in the instructions and on the package.
13. The illustrations of the products and accessories in the manual, such as the user interface of the tonneau, are schematic diagrams for reference only. Due to product updates and upgrades, there may be slight differences between the actual product and the schematic, please also prevail in kind.

After-sales service card

Warranty regulations
During the warranty period, if there is a product performance failure caused by non-human damage, you can enjoy the following three guarantees.
1. Within 7 days from the date of purchase, if this product has quality problems, consumers can choose to return it at the delivery price or replace it with a product of the same model and specification;
2. Within 15 days from the date of purchase, if this product has quality problems, consumers can choose to replace it with a product of the same model and specification;
3. The three-guarantee period for this product is half a year;
4. This certificate shall not be altered, otherwise it will be deemed invalid;
5. This certificate will only take effect after being stamped by the sales unit;

Non-warranty regulations
The following situations (but not limited to the following situations) are not covered by the 'Three Guarantees'
1. No 'Three Guarantees' certificate or missing valid invoice or expired 'Three Guarantees' service validity period
2. Damage caused by failure to use, maintain, and store in accordance with the user manual
3. Damage caused by force majeure such as fire, lightning, floods, etc.
4. The product model or number on the warranty card does not match the actual product;
5. Damage caused by repair by non-authorized service providers of the company;
6. Normal fading and wear and tear caused by pet scratching during product use are not covered by the warranty.

Repair date: _____

Reason for repair: _____

Repair failure: _____

Proof of pickup: _____

Signature of repairman: _____

FCC Warning

This device complies with part 15 of the FCC Rules. Operation is subject to the following two conditions: (1) This device may not cause harmful interference, and (2) this device must accept any interference received, including interference that may cause undesired operation.

Any Changes or modifications not expressly approved by the party responsible for compliance could void the user's authority to operate the equipment.

Note: This equipment has been tested and found to comply with the limits for a Class B digital device, pursuant to part 15 of the FCC Rules. These limits are designed to provide reasonable protection against harmful interference in a residential installation. This equipment generates uses and can radiate radio frequency energy and, if not installed and used in accordance with the instructions, may cause harmful interference to radio communications. However, there is no guarantee that interference will not occur in a particular installation. If this equipment does cause harmful interference to radio or television reception, which can be determined by turning the equipment off and on, the user is encouraged to try to correct the interference by one or more of the following measures:

- Reorient or relocate the receiving antenna.
- Increase the separation between the equipment and receiver.
- Connect the equipment into an outlet on a circuit different from that to which the receiver is connected.
- Consult the dealer or an experienced radio/TV technician for help.

This equipment complies with FCC radiation exposure limits set forth for an uncontrolled environment. This equipment should be installed and operated with minimum distance 20cm between the radiator & your body.