




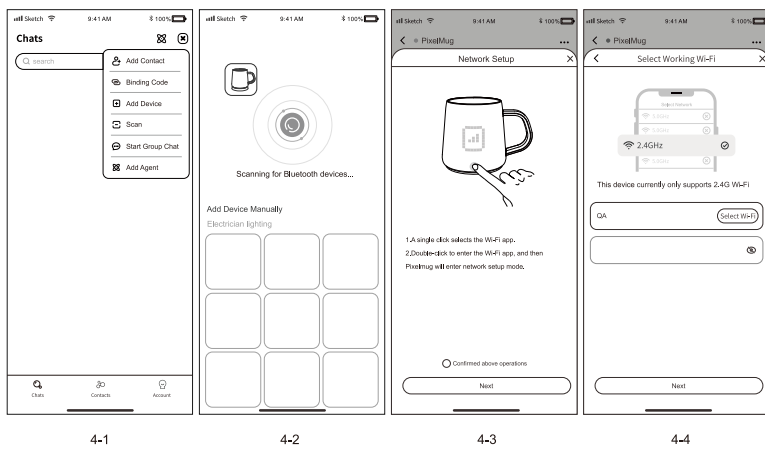
Note: Product illustrations, accessories, and user interfaces shown in this manual are for reference only. Due to product updates and upgrades, the actual product may vary slightly from the illustrations. Please refer to the actual product.

- It is recommended to charge the PixelMug before first use.
 - Connect the adapter's power cord to the input port located at the back of the charging base, and then insert the adapter plug into the AC socket.
 - Place the charging base flat on a smooth tabletop or platform.
 - Place the PixelMug onto the charging base of the base.
- 

3. Enter Network Setup Mode

- A single click selects the Wi-Fi app.
- Double-click to enter the Wi-Fi app, and then Pixelmover will enter network setup mode.

- #### 4. Network Configuration for the PixelMug Device
- 4-1. Open the App and tap the "+" icon located in the top-right corner of the home screen, and select "Add Device".
 - 4-2. On the Bluetooth search page, click to select the scanned PixelMug device.
 - 4-3. Follow the on-screen instructions to set the mug into network setup mode (Refer to Step 3 for details).
 - 4-4. Enter Wi-Fi password, submit and the PixelMug will be successfully connected to the internet.



Address: No. 1 Keji Avenue, Keji Xincheng, Development Zone, Jurong City
Manufacturing Enterprise: Shenzhen Digital Dragon Electronics Co., Ltd.
Address: Digital Dragon Science and Technology Park, No. 27 Dahe Industrial Zone, Huanguan South
Road, Guanhu Street, Longhua District, Shenzhen City

- Do not use steel wool or other abrasive cleaners to scrub the Mug.
- Keep the product away from heat sources, high voltage, and high magnetic fields when in use.
- Do not place the product in areas with excessive smoke and dust.
- Do not subject the product to mechanical vibration or shaking, and do not squeeze or strike the product screen and battery with sharp objects.

- Insufficient battery power will cause the device to shut down forcibly, ensure timely charging or connect to a power source.

- Within 7 days from the date of receiving the product, if the product has performance issues listed in the "Product Performance Fault Table," it can be returned or exchanged for free after confirmation.
- From the 8th to the 15th day after receiving the product, if the product has performance issues listed in the "Product Performance Fault Table," it can be repaired or exchanged for free after confirmation.
- From the 16th day to 12 months after receiving the product, if the product has performance issues listed in the "Product Performance Fault Table," it is eligible for free repair service after confirmation.

- Unauthorized repairs, misuse, collision, negligence, abuse, liquid innaress, accidents, modifications, incorrectuse of non-original accessories, or tampering with, defacing labels or anti-counterfeiting marks.

- Damage caused by force majeure.
- Situations that do not conform to the performance faults listed in the "Product Performance Fault Table."
- Performance faults of this product and its accessories caused by human factors as listed in the "Product Performance Fault Table."
- Normal aging, wear, and discoloration during the product usage process.

Official Email: support@pixelmug.com
Service Website: www.pixelmug.com
Manufacturer: Changban intelligent (Jiangsu) Technology Co., Ltd.
Address: No. 1 Keji Avenue, Keji Xincheng, Development Zone, Jurong City

材质: **120g双胶纸。**
装订方式: 风琴折
注意:
1. 说明书采用**单色印刷**
2. 说明书采用书页式装订方式, 单页尺寸: **113mm*90mm**
3. 印刷一定要清晰, 不能出现缺印、漏印、模糊等不良现象。
4. 不能出现颜色偏差。

This device complies with part 15 of the FCC Rules. Operation is subject to the following two conditions: (1) This device may not cause harmful interference, and (2) this device must accept any interference received, including interference that may cause undesired operation.

Any Changes or modifications not expressly approved by the party responsible for compliance could void the user's authority to operate the equipment.

Note: This equipment has been tested and found to comply with the limits for a Class B digital device, pursuant to part 15 of the FCC Rules. These limits are designed to provide reasonable protection against harmful interference in a residential installation. This equipment generates uses and can radiate radio frequency energy and, if not installed and used in accordance with the instructions, may cause harmful interference to radio communications. However, there is no guarantee that interference will not occur in a particular installation. If this equipment does cause harmful interference to radio or television reception, which can be determined by turning the equipment off and on, the user is encouraged to try to correct the interference by one or more of the following measures:

- Reorient or relocate the receiving antenna.
- Increase the separation between the equipment and receiver.
- Connect the equipment into an outlet on a circuit different from that to which the receiver is connected.
- Consult the dealer or an experienced radio/TV technician for help.

FCC Radiation Exposure statement

The device has been evaluatec to meel general RF exposure requirement. The device can be used in portable exposure condition without restriction.