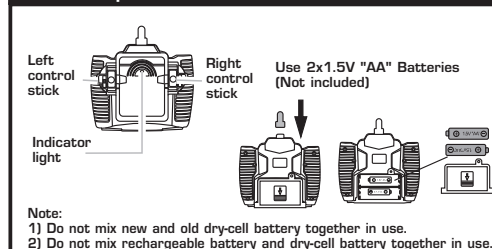


# Remote control ship series

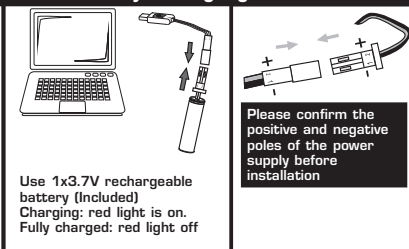
## Packaging list

RC Boat x1, remote control x1, 3.7V battery x1,  
USB charging cable x1, manual x1,  
black plastic stand x1, white rudder x1

## Remote operation



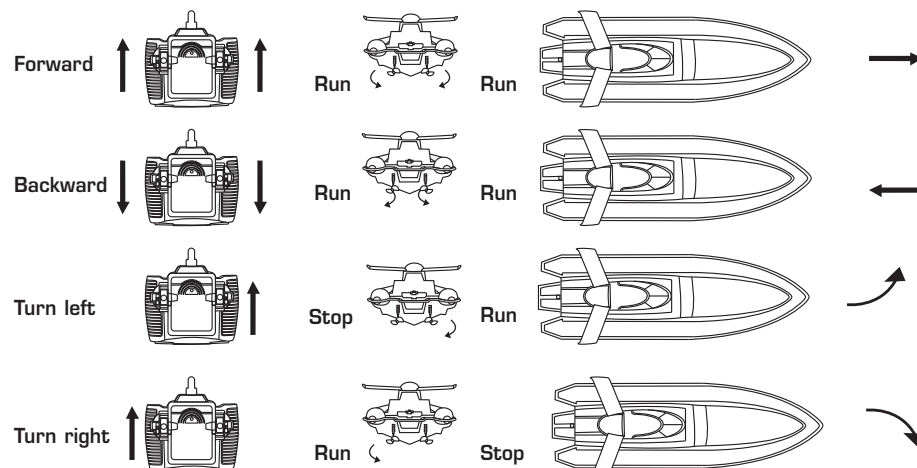
## Boat Battery Charging



## Product Usage Operation

This product adopts gyro 2.4G technology. It can automatically connect to the frequency and support multiple products to play at the same time.

1. Correctly connect the battery plug to the power socket on the boat and then put on the top cover, place the boat on the water.
2. Insert the AA batteries into the remote control and push the remote control stick, the indicator light of the remote control flashes quickly. Automatic frequency matching.
3. Low battery protection: When the boat speed drops suddenly and slowly, the battery power is insufficient, and the boat has entered the low protection state, you need to charge the boat battery. When the remote control light flashes, the remote control is in a low power state. You need to replace the remote control batteries.



## Maintenance

1. The water in the boat should be wiped dry in time after use to avoid aging of components;
2. When the boat is not used for a long time, the boat battery and remote control batteries should be removed to prevent battery leakage and damage to the product;
3. The boat surface should avoid long-term insolation of sunshine and oil taint to prevent lacquer painting damage, the surface should be wiped clean with clean water after use.

## FCC Warning

This device complies with Part 15 of the FCC Rules. Operation is subject to the following two conditions:

- (1) This device may not cause harmful interference, and (2) this device must accept any interference received, including interference that may cause undesired operation.

**NOTE 1:** This equipment has been tested and found to comply with the limits for a Class B digital device, pursuant to part 15 of the FCC Rules. These limits are designed to provide reasonable protection against harmful interference in a residential installation. This equipment generates, uses and can radiate radio frequency energy and, if not installed and used in accordance with the instructions, may cause harmful interference to radio communications. However, there is no guarantee that interference will not occur in a particular installation. If this equipment does cause harmful interference to radio or television reception, which can be determined by turning the equipment off and on, the user is encouraged to try to correct the interference by one or more of the following measures:

- Reorient or relocate the receiving antenna.
- Increase the separation between the equipment and receiver.
- Connect the equipment into an outlet on a circuit different from that to which the receiver is connected.
- Consult the dealer or an experienced radio/TV technician for help.

**NOTE 2:** Any changes or modifications to this unit not expressly approved by the party responsible for compliance could void the user's authority to operate the equipment.

The device has been evaluated to meet general RF exposure requirement. The device can be used in portable exposure condition without restriction.