

65*65mm

多功能触摸屏 遥控器

JX-13



视频/阅读/自拍遥控器说明书

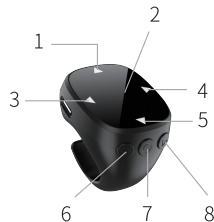
产品简介

视频/阅读遥控器支持短视频(抖音、快手、微视等)及个别手机阅读APP的翻页功能,支持调节手机音量加减,真正释放双手!还是一个自拍遥控器,在观看短视频时,拍个美美的自拍照!

规格参数

适用系统:视频/阅读/自拍遥控器
支持iOS 14.8/Android 8.0以上
蓝牙版本:蓝牙5.3
发射频率:2.4-2.4835GHz
工作电压:3.9-4.2V(聚合物锂电池)
工作温度:0-50°C
通讯距离:10m

按键功能说明



- 1.触屏上方区域:
短按:向上滑动视频
长按:音量增加
- 2.触屏中间区域:
活动鼠标
- 3.触屏左方区域:
短按:向左翻页
长按:上一曲音乐
- 4.触屏右方区域:
短按:向右翻页
长按:下一曲音乐
- 5.触屏下方区域:
短按:向下滑动视频
长按:音量减小

6号按键
单击:确认/暂停
长按:向上缓慢划屏
双击:返回主菜单

7号按键
长按:开机/关机
单击:拍照
双击:音乐暂停/播放

8号按键
单击:确认/暂停
长按:向下缓慢划屏
双击:自动点赞
(按一键动作退出)

同时按6和8号按键3秒,闪蓝光时切换另一种手机系统的兼容模式

指示灯说明

长按7号键开机闪蓝光,表示已开机,蓝牙待连接状态,成功连接手机蓝牙后,灯不亮;长按7号键关机时闪几下红灯后熄灭,表示已关机。

充电闪红灯,充满电后长亮蓝光。

关于苹果手机

使用苹果手机时,请注意以下几点:

- 1.确保手机iOS软件为14.8以上
- 2.辅助触控功能必须打开

iOS14.8以上版本需设置方可使用。设置如下:设置→辅助功能→触控→辅助触控→打开,出现圆点即可。
设置如下:

- 6.Click: Confirm/Pause
Long press: Slowly swipe up the screen
Double click: Return to the main menu
- 7.Long press: Power on/off
Click: Take a photo
Double click: Music Pause/Play
- 8.Click: Confirm/Pause
Long press: Slowly swipe down the screen
Double click: automatic like
(Press one click action to exit)

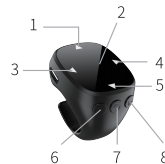
Press keys 6 and 8 simultaneously for 3 seconds, and switch to another compatibility mode of the phone system when the blue light flashes

Indicator description

Long press the 7th key to turn on the phone and the blue light will flash, indicating that it has been turned on and the Bluetooth connection is pending. After successfully connecting to the phone's Bluetooth, the light will not turn on; Press and hold key 7 to turn off the device. If the red light flashes a few times before turning off, it indicates that the device has been turned off. Flashing red light for charging, keeping blue light on after fully charged

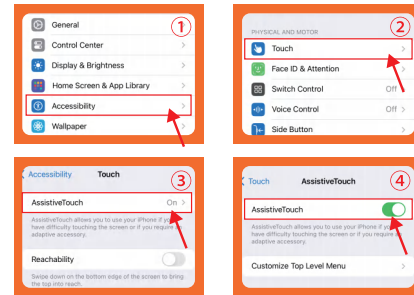
About iPhone

When using an iPhone, please note a few things:



注:iOS系统用户如遇触控辅助圆点指标持续往上跳动后无法上下操作,应调节跟踪灵敏度 从左右到调节到适应位置便可以正常使用,(执行触控手势)必须打开,如下图

1. Ensure that the iOS software of the mobile phone is 14.8 or higher
 2. Auxiliary touch function must be turned on
- iOS14.8 and above versions need to be set before use. The settings are as follows: Settings → Accessibility → Touch → Assistive Touch → On, and a dot appears. The settings are as follows:



Note: If the iOS system user is unable to operate up and down after the touch assisted



跟踪灵敏度调节滑动,调节之后必须把辅助触控关闭再重新打开辅助触控

如无法正常操作,请调低灵敏度。

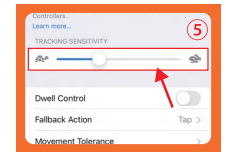
- 3.以上2项如果确认OK,还是不能正常使用请把手机关机再开机一次
- 4.打开辅助触控后,会出现2个点。大的圆圈是可以移动的,小的是没有办法移动的,不刷视频时30秒消失,安卓和鸿蒙没有这个点。
- 5.苹果问题:点击鼠标点跳动,不能刷屏,请把辅助触控关闭再开启就可以正常使用

Android版本手机蓝牙配对即可使用,如鼠标或圆点不在拍照键上,可参考设置1。



微信扫描二维码进入
JX-13视频使用教程

dot indicator continues to jump up and down, he should adjust the tracking sensitivity from left to right to the adaptive position for normal use. (Execute touch gesture) must be turned on, as shown in the following figure



Tracking sensitivity adjustment sliding, after adjustment, the auxiliary touch must be turned off and then turned on again

If unable to operate normally, please lower the sensitivity.

3. If the above two items are OK and still cannot be used normally, please turn off the phone and turn it on again
4. After opening the auxiliary touch, 2 dots will appear. The big circle can be moved, and the small one cannot be moved. It disappears in 30 seconds without brushing the video. Android and Hongmeng do not have this point.
5. Apple problem: Click the mouse to beat, can not brush the screen, please turn the auxiliary touch off and on can be used normally

The Android version of the mobile phone can be used after Bluetooth pairing. If the mouse or dot is not on the camera button, please refer to Setting 1.

Tip: If this product cannot be used due to the upgrade of the iOS system, it is a force majeure.

Multifunction touch screen remote control

JX-13



Video/Reading/Selfie Remote Control Instructions

Product introduction

The video/reading remote control supports short videos (Tik Tok, Kuai shou, Weishi, etc.) and the page-turning function of individual mobile phone reading APPs, supports adjusting the volume of the mobile phone to increase or decrease, and truly releases both hands! It is also a selfie remote control, when watching short videos, take a beautiful selfie!

Specifications

Applicable system: video/reading/selfie remote control
Support iOS 14.8/Android 8.0 and above
Bluetooth version: Bluetooth 5.3
Transmission frequency: 2.4-2.4835GHz
Working voltage: 3.9-4.2V (polymer lithium battery)
Operating temperature: 0-50°C
Communication distance: 10m

Button function description

1. Short press: Slide the video up, Long press: Volume increases
2. Active Mouse
3. Short press: Page left, Long press: Previous music
4. Short press: Page to the right, Long press: Next music track
5. Short press: Slide down the video, Long press: Volume decreases

FCC Caution:

This device complies with part 15 of the FCC Rules. Operation is subject to the following two conditions: (1) This device may not cause harmful interference, and (2) this device must accept any interference received, including interference that may cause undesired operation.

Any changes or modifications not expressly approved by the party responsible for compliance could void the user's authority to operate the equipment.

NOTE: This equipment has been tested and found to comply with the limits for a Class B digital device, pursuant to Part 15 of the FCC Rules. These limits are designed to provide reasonable protection against harmful interference in a residential installation. This equipment generates, uses and can radiate radio frequency energy and, if not installed and used in accordance with the instructions, may cause harmful interference to radio communications. However, there is no guarantee that interference will not occur in a particular installation.

If this equipment does cause harmful interference to radio or television reception, which can be determined by turning the equipment off and on, the user is encouraged to try to correct the interference by one or more of the following measures:

- Reorient or relocate the receiving antenna.
- Increase the separation between the equipment and receiver.
- Connect the equipment into an outlet on a circuit different from that to which the receiver is connected.
- Consult the dealer or an experienced radio/TV technician for help.

The device has been evaluated to meet general RF exposure requirement. The device can be used in portable exposure condition without restriction.