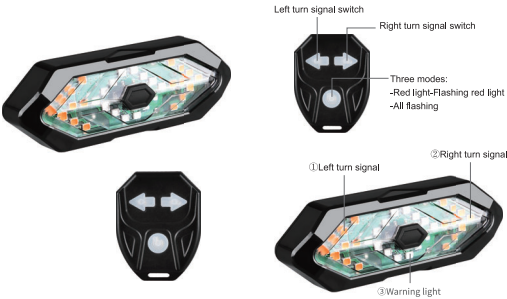


WIRELESS REMOTE TURN SIGNAL  
USER MANUAL



Function Description:

Remote control: a total of 4 buttons, each button is equipped with an indicator.

Left turn signal switch Right turn signal switch

Three modes:  
-Red light-Flashing red light  
-All flashing

① Left turn signal  
② Right turn signal  
③ Warning light

Product features:

1. Large visual range.
2. Easy to install.
3. Built in 900mAh rechargeable battery, long life
4. The surface waterproof effect reaches IPX2 to ensure daily use.
5. High quality led to ensure the warning effect.

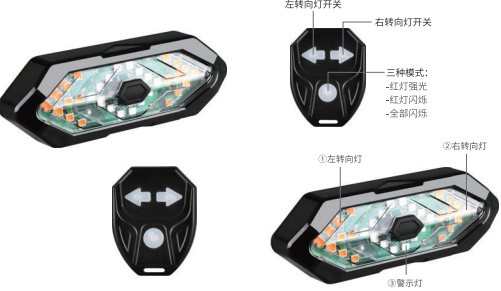
Operation method of tail lamp:

- ① When charging, please remove the tail lamp, open the protective cover of the rubber charging port on the back of the tail lamp, and plug in the micro plug for USB charging cable.
- ② The lamp and remote control are matched at the factory and can be used after installation.
- ③ The tail lamp and controller are combined with the corresponding accessories, and then respectively installed in the appropriate position of the vehicle.
- ④ When the battery is replaced after the match is forgotten because the battery is exhausted, long press the main light switch and remote control switch for 3 seconds at the same time.

Matters needing attention:

1. Don't disassemble and refill without permission.
2. This product is only rain proof, do not soak the product in water.
3. After use, please turn off the tail light switch button to avoid battery power loss.
4. Pay attention to the battery inside the tail lamp, and do not replace it by yourself.

遥控自行车转向灯  
使用手册



转向灯功能说明:

遥控器: 共4个按键, 每个按键配备一个指示灯。

左转向灯开关 右转向灯开关

三种模式:  
-红灯强光  
-红灯闪烁  
-全部闪烁

① 左转向灯  
② 右转向灯  
③ 警示灯

产品特点:

1. 大角度的视觉范围。
2. 安装方便。
3. 内装900mAh充电电池, 持久续航。
4. 表面防水效果达到IPX2, 保障日常使用。
5. 高质量LED, 保证警示效果。

尾灯操作方法:

- ① 充电时请将尾灯取下, 打开尾灯背面的橡胶充电口保护罩, 插入Micro插头进行USB充电线进行充电。
- ② 车灯与遥控器出厂时已匹配, 安装之后就可以使用了。
- ③ 把尾灯和控制器与对应配件组合一起, 然后分别安装到车辆合适的位置上。
- ④ 当匹配因为电量耗尽遗忘后 更换电池后 将要主灯开关和遥控器开关同时长按3秒即可。

注意事项:

1. 不要私自拆卸改装。
2. 本产品只防雨水, 请勿将产品浸泡水中。
3. 使用完后后请关闭尾灯开关按钮, 避免电池跑电。
4. 注意尾灯内装电池不允许自行更换。

This device complies with part 15 of the FCC Rules. Operation is subject to the following two conditions: (1) this device may not cause harmful interference, and (2) this device must accept any interference received, including interference that may cause undesired operation.

Any changes or modifications not expressly approved by the party responsible for compliance could void the user's authority to operate the equipment.

NOTE: This equipment has been tested and found to comply with the limits for a Class B digital device, pursuant to Part 15 of the FCC Rules. These limits are designed to provide reasonable protection against harmful interference in a residential installation. This equipment generates, uses and can radiate radio frequency energy and, if not installed and used in accordance with the instructions, may cause harmful interference to radio communications. However, there is no guarantee that interference will not occur in a particular installation.

If this equipment does cause harmful interference to radio or television reception, which can be determined by turning the equipment off and on, the user is encouraged to try to correct the interference by one or more of the following measures:

- Reorient or relocate the receiving antenna.
- Increase the separation between the equipment and receiver.
- Connect the equipment into an outlet on a circuit different from that to which the receiver is connected.
- Consult the dealer or an experienced radio/TV technician for help.

The device has been evaluated to meet general RF exposure requirement. The device can be used in portable exposure condition without restriction