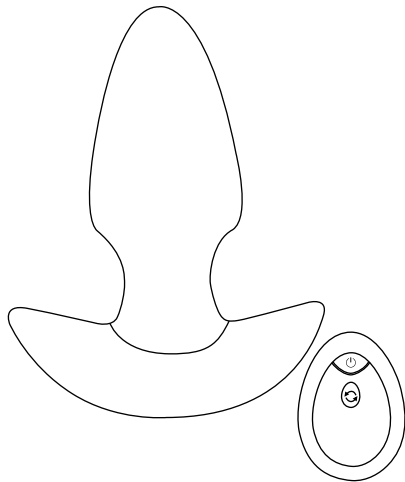


120*110mm 70g铜版纸

INSTRUCTION MANUAL



Baby, maybe we're not romantic enough

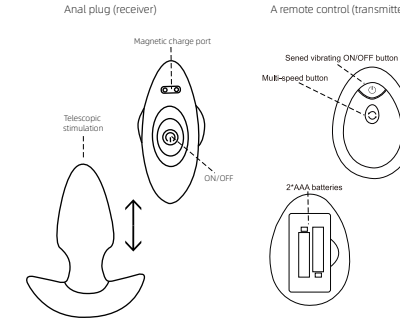
PRODUCT SPECIFICATION:

BRAND:	Green Baby/格林宝贝
Model	QF987
Material:	Plastics; ABS; silica gel
Size:	100mm*78mm*37mm (Receiver) 72mm*51.5mm*25.7mm (Transmitter)
Weight:	97.9g (Receiver) 25g (Transmitter)
Color:	black
Length of use:	≥ 50 minutes
Function:	10-frequency Telescopic
Control Mode:	Wireless remote control

POINTS TO NOTE:

1. This product is for personal use, for your health, please do not use more than one person.
2. Please do not disassemble to avoid damage to the product.
3. After use due to a large number of residual lubricant fluid, if not cleaned for a long time. It's easy for bacteria to grow, so wash your partner as soon as you're done using it.
4. Do not use detergent containing alcohol, gasoline or acetone for cleaning.
5. After use, please use neutral antibacterial liquid clean this product, and gently dry with a soft cloth after natural air-dry, and then the product received. Avoid exposure to the sun!

INSTRUCTIONS:



PACKING LIST:

Receiver * 1, transmitter * 1, manual * 1, charging line * 1

CHARGING INSTRUCTIONS:

1. This product adopts a magnetic charging mode.
2. Must be charged before use to activate the product function!
3. Please use a charger with matching parameters for charging. Charging with a charger with mismatched parameters may affect battery life or cause product damage.
4. When the product is charged, the indicator light flickers. When it is fully charged, the indicator light is always on.
5. Product built-in current protection function, charging the product automatically into the protection state, the product can not be used, fully charged automatically resume the use of state.

PRODUCT FEATURES:



Tip:
Please keep this product out of the reach of minors.
For consumers who are allergic to silicone products, please use with caution.

HOW TO USE IT:

RECEIVER

1. One touch button of 4.5*4.5*4mm, two blue lights: After startup, the button light turns on and flashes slowly. When the power button is briefly pressed, the inverter light also flashes slowly all the time.
2. Press and hold the power button for 2 seconds to turn on/off: After turning on, it enters the standby state (at this time, the light is on and flashes slowly). Press and hold the power button briefly to turn on the first swing vibration function. Press and hold again briefly, and the inverter light will also flash slowly all the time. There are a total of 10 gears (weak, medium, strong +7 inverter) : 1--2--3--10--1--2-- This cycle works (The main unit will automatically shut down when the standby time exceeds 30 minutes!)

THE TRANSMITTER

1. Two buttons and one blue light: When the power button is clicked, the button light turns on. When the gear switch button is pressed, the light flashes and remains on constantly.
2. Press the power button briefly to turn on/off the remote control function. If the host is running, after turning on the remote control, regardless of the working state of the host, the host enters the default first gear. When the remote control is turned off, the main unit will enter standby mode! The host will automatically shut down when the standby time exceeds 30 minutes!
3. Short press gear switch mainframe gear, such as the host to 5:6-7-8-9-10 - standby - 1-2-3 - so cycle!

FCC Warning

This device complies with part 15 of the FCC Rules. Operation is subject to the following two conditions:

(1) This device may not cause harmful interference, and (2) this device must accept any interference received, including interference that may cause undesired operation.

Any Changes or modifications not expressly approved by the party responsible for compliance could void the user's authority to operate the equipment.

Note: This equipment has been tested and found to comply with the limits for a Class B digital device, pursuant to part 15 of the FCC Rules. These limits are designed to provide reasonable protection against harmful interference in a residential installation. This equipment generates uses and can radiate radio frequency energy and, if not installed and used in accordance with the instructions, may cause harmful interference to radio communications. However, there is no guarantee that interference will not occur in a particular installation. If this equipment does cause harmful interference to radio or television reception, which can be determined by turning the equipment off and on, the user is encouraged to try to correct the interference by one or more of the following measures:

- Reorient or relocate the receiving antenna.
- Increase the separation between the equipment and receiver.
- Connect the equipment into an outlet on a circuit different from that to which the receiver is connected.
- Consult the dealer or an experienced radio/TV technician for help.

* RF warning for Portable device:

The device has been evaluated to meet general RF exposure requirement. The device can be used in portable exposure condition without restriction.