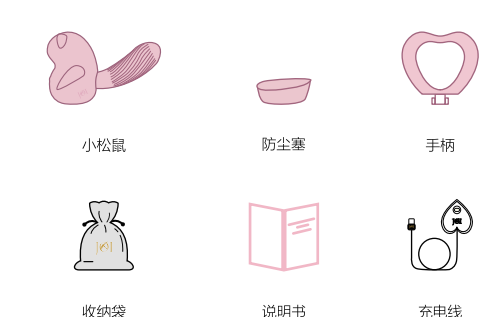




## 了解您的玩具

**名称：**小松鼠智能健康按摩器  
**版本：**V3.02  
**颜色：**莫兰迪粉 / 马卡龙绿  
**电池：**充电式锂电池 (身体400mAh, 小尾巴480mAh)  
**材质：**亲肤安全硅胶  
**输入：**5.0V MAX 880mAh  
**防水等级：**IPX7  
**噪音指数：**< 50分贝  
**标准：**CE/30214WXS R01-2020  
**尺寸：**120mm\*85mm\*55mm

## 配件



1

## 玩法推荐

### 让我们一起找到G点这个快乐按钮

#### 在哪里

通常可在阴道壁顶部找到它，但这并不是它唯一存在的地方

#### 深度不一

大部分人在距离阴道口3~4cm处找到它，但有些人需要探索那些手指无法触及的深处

5

## 好好爱护我

- 每次使用前请用清水，使用完毕后请清洗，擦拭后保持清洁，尤其请擦干充电触点，避免氧化。请不要用尖锐的东西（例如指甲尤其指甲）清除充电触点
- 产品建议放置在阴凉干燥的地方，避免阳光直射
- 勿在高温、潮湿环境、盐水或海水中使用，以免造成故障
- 请勿将产品长时间浸泡在水中或煮沸
- 本产品于微弱水流中冲洗下仍可正常运转的防水设计，恕以强力水柱或在水深1米以上浸浴使用，以免造成故障
- 请勿在疲劳、饮酒后等易造成身体不适状态下使用
- 请勿画圈或重击，以避免触电、短路或故障
- 请勿使用有机溶剂、去油漆、酒精、热水等清洗，有可能造成产品变形或变色
- 请使用清水冲水或沐浴露等中性清洁剂清洗
- 请定期进行产品检查，如果使用时发现产品损坏或产品工作异常，或身体有不舒适，请停止使用
- 此产品属于私密物品，出于健康卫生状况考虑，请勿与他人共用
- 此产品仅适合16岁及以上成年人使用，请远离小朋友



7

## Know your toy

**Name:** Squirrel PRO Health Massager  
**Version:** V3.02  
**Color:** Morandi pink/Macaroon green  
**Battery:** Rechargeable Lithium battery (Body 400mAh, Tail 480mAh)  
**Material:** Soft liquid silica  
**Input:** 5.0V MAX 880mAh  
**Waterproof:** IPX7  
**Noise Index:** Less than 50 db  
**Standard:** CE/30214WXS R01-2020  
**Size:** 120mm\*80mm\*55mm

## Accessory



10

## Recommended playing method

### Let's find the "Happy Button"

#### Where it is

You can find it on the top of vaginal wall, Close to the top of vaginal wall, On the side of vaginal wall, On the bottom of vaginal wall, Random spot in the vagina

#### Different depth

For the majority of women, G-spot can be found in about 3-4 centimeters away from vaginal opening. However, some women need to try other places that fingers can't reach

14

## Take good care of me

- Wash and clean the product before use and after use, keep it clean and place safely. Do not clean the mouth with sharp objects such as sharp nails
- Store the product in a dry and cool place, and avoid direct sunlight
- Do not use in high temperature and humid space, not use in sea to avoid failure
- Do not keep the product in water long time and avoid boiling water
- It works with weak water flow flushing because of waterproof design, do not wash with strong flushing or place in water more than 1hr
- Do not use the product after drunk or feeling not well
- Do not drop and hit heavily to avoid short current or no-working
- Do not clean with organic solvent, oil or alcohol to avoid deformation or discoloration
- Do not use with silicone lubricant, suggest to use water soluble lubricant
- Please wash the product with clean water or neutral detergents
- Please check the product regularly. If it is damaged, do not use it any longer
- It is private and personal product, please do not share with others
- The product is only intended for adults, please keep it away from children



16

## 如何使用

### 连接手机使用



### 直接按键使用

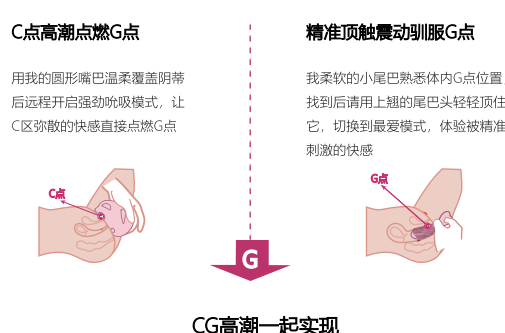


2

## 了解G点的特征

- 它通常在快速勃起后出现，膨胀并变得敏感，因此我们在寻找它之前需要充分热身
- 如果你没有找到也不用沮丧，有些人确实没有小尾巴G点，但探索本身也很快乐
- 不像阴道敏感那样易于表面，G点的让你获得深深刺激，甚至还能带来高潮
- 每个人都有自己的个性，G点也不例外

### 如何照顾好G点



根据阴道结构调查得知，女性的一生中只有1-2次CG高潮的机会！我的尾巴和小尾巴可定时刺激C点和G点敏感区域，让CG高潮发生的几率大大增加，让女性可以享受更多的高潮~

6

## JOI质保服务

- JOI产品保修期为购买后1年，任何因产品制造或材料缺陷引起的质量问题均属于质保范围
- 请不要尝试打开或拆卸JOI产品，否则将无法享受免费维修服务
- 如果您有任何此类质量问题，请在质保期内扫码联系JOI微信官方售后服务，JOI将为您提供免费更换产品服务



## 报废与回收处理

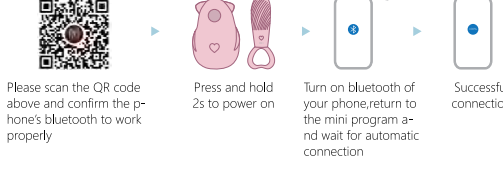
废旧电子设备的处理方法（适用于欧盟及其他具有垃圾分类处理系统的欧洲国家）



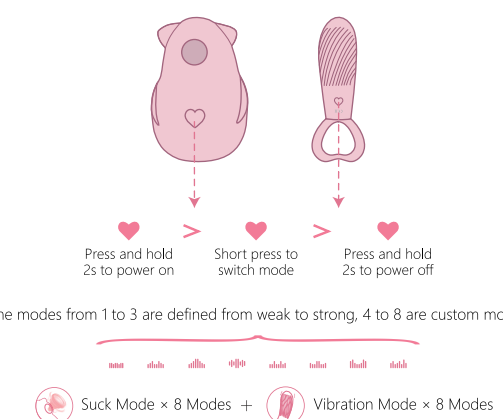
8

## How to use

### Use it by connecting to a phone

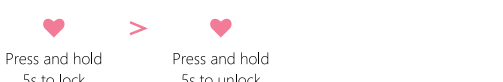


### Direct use by pressing the button



11

## Safety lock setting

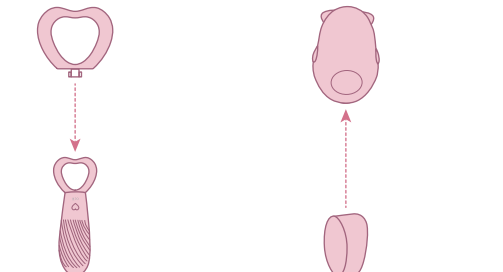


## Tail is always there to warm you up

The mini program starts the tail's vibration or long press for 2s on button and short press it, the tail will automatically heat about 42°C

## Handle

The handle can be installed onto the tail's charge port, it is convenient for handheld use



12

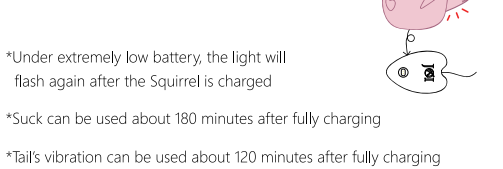
**FCC Caution:**  
This device complies with part 15 of the FCC Rules. Operation is subject to the following two conditions: (1) This device may not cause harmful interference, and (2) this device must accept any interference received, including interference that may cause undesired operation.

Any changes or modifications not expressly approved by the party responsible for compliance could void the user's authority to operate the equipment.  
**NOTE:** This equipment has been tested and found to comply with the limits for a Class B digital device, pursuant to Part 15 of the FCC Rules. These limits are designed to provide reasonable protection against harmful interference in a residential installation. This equipment generates, uses and can radiate radio frequency energy and, if not installed and used in accordance with the instructions, may cause harmful interference to radio communications. However, there is no guarantee that interference will not occur in a particular installation. If this equipment does cause harmful interference to radio or television reception, which can be determined by turning the equipment off and on, the user is encouraged to try to correct the interference by one or more of the following measures:  
-- Reorient or relocate the receiving antenna.  
-- Increase the separation between the equipment and receiver.  
-- Connect the equipment into an outlet on a circuit different from that to which the receiver is connected.  
-- Consult the dealer or an experienced radio/TV technician for help.  
The device has been evaluated to meet general RF exposure requirement. The device can be used in portable exposure condition without restriction.

## How to charge

Flash: Charging Light on : Fully charged Dim light : Low power

Please fully charged the Squirrel before use, putting it on the magnetic charge base will ensure its successful charging



- To avoid short circuit, please wipe off the water from the contact before charging
- Please use a 5V (1A, 2A, or 4.5A) charger which complies with the national standards
- If the product is not used for a long time, please charge it once per two months to maintain its charging performance
- To prevent over charging to reduce the battery life, please disconnect the charger after fully charged
- In the process of charging, please do not expose the product in damp & high temperature environments

13

## 满电我更有劲

闪烁：充电中 / 长亮：电充满 / 暗淡：电量不足  
使用前请先将小松鼠充满电，将小松鼠直接放到磁吸充电底座上面，即可成功充电



- \*磁吸充电时充电效率约50%
- \*充电时间约180分钟
- \*充电尾巴温度约20分钟
- \*充电前请将磁吸充电触点和水槽拭干净，避免短路
- \*请使用符合国家标准的5V(1A或者2A或者4.5A)充电头充电
- \*若长时间放置，请每2个月充电一次以维持其充电性能
- \*充电后请与充电底座断开，防止过充而缩短电池寿命
- \*充电时不得暴露在潮湿或高温环境中

4

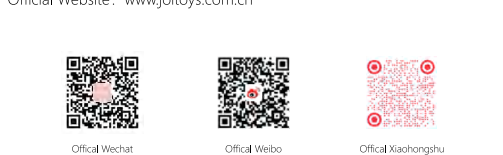
**Disclaimer:** Product users at their own risk. The Company and its retailers shall not be liable or liable for any physical or non-physical injury or damage caused directly or indirectly by the use of the products

JOI reserve the right to modify the contents of this manual without prior notice

## Warning

- Do not disassemble, repair or transform the product by yourself in order to avoid damage, water inflow, fire and other abnormal actions that may cause injury
- Users who are using medical electronic devices such as artificial pacemakers, pregnant women or those suffering from other diseases under medical treatment, please consult a doctor before using this product
- Please keep out of reach of children to avoid swallowing of parts or detachable parts

©2023 JOI All Rights Reserved  
Designed and operated by Jiangsu Changcheng Electronic Technology Co., Ltd  
Official Website: www.joi toys.com.cn



18