



Affordable. Reliable. Home Improvement.

Bluetooth Speaker

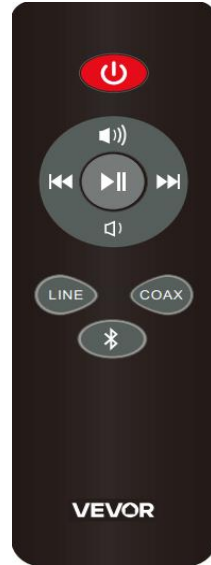
Model: VV-4P

Technical Support and E-Warranty Certificate
www.vevor.com/support

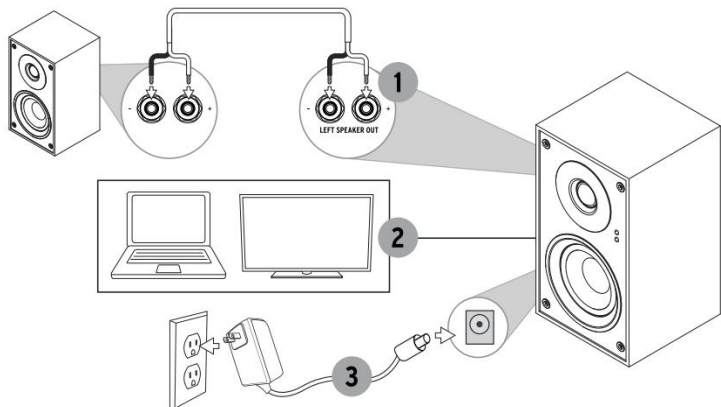
Bluetooth Speaker

Description of Infrared Remote Control (9-key)

- 1、 On/Standby
- 2、 Previous Track/REW
- 3、 Play/Pause
- 4、 Next Track/FWD
- 5、 Volume Up
- 6、 Volume Down
- 7、 On/Line Source Select
- 8、 On/ Coaxial
- 9、 On/Bluetooth Source Select 2nd function: Bluetooth



Paring






1. Product Overview

- **Model:** VV-4P
- **Product Type:** Active Bookshelf Speakers (Pair)
- **Power Specification:** AC100-240V 50/60Hz
- **Max Power:** 20W*2
- **Tweeter/Woofer Size:** 0.5 inch / 4 inch
- **Key Features:**
 - Supports 5.3 Bluetooth, infrared remote control, and volume adjustment
 - Provides high-quality audio output

2. Main Features

- **Bluetooth Connectivity**
 - Enable the speaker's Bluetooth mode and pair with a compatible device.
- **Stereo Audio Output**
 - Enjoy clear, high-fidelity stereo sound suitable for various audio playback needs.
- **Multiple Input Options**
 - Utilize Bluetooth, LINE IN, or coaxial inputs to select your preferred audio source.


3. Sound Source Selection

Short-press the [VOLUME/SOURCE] encoder knob on the amplifier's rear panel or the    key on the remote control to select the audio source:

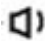

- Bluetooth (Bluetooth): Blue LED lights up

- Line Input (LINE IN): Green LED lights up
- Coaxial Input (Coaxial): Red, green, and blue LEDs all light up


4. Bluetooth Connecting, Pairing & Play

1. After connecting the DC power, the device automatically enters the default "Bluetooth" pairing mode, indicated by a fast-flashing blue LED.
2. Activate the Bluetooth function on your phone to search for nearby devices (refer to your phone's manual for details).
3. From the list of detected Bluetooth devices, select the target device (VV-4P), then click "Connect" to pair. Once successfully paired, the blue LED will stay solid, and you can start playing music.
4. To disconnect Bluetooth, press and hold the  key on the remote for 3 seconds, or press the [VOLUME/SOURCE] encoder knob for 3 seconds to re-enter pairing mode (blue LED fast-flashing).

5. Volume Adjustment

- Turn the knob [VOLUME/SOURCE] left or short-press the  key on the remote to decrease volume.
- Turn the knob [VOLUME/SOURCE] right or short-press the  key on the remote to increase volume.
- Rotate the knob [BASS] counter clockwise to reduce low frequencies or clockwise to enhance them.
- Rotate the knob [TREBLE] counter clockwise to reduce high frequencies or clockwise to enhance them.

6. Standby & Wake-Up

When the system enters sleep mode (power-saving), the red LED lights up. To wake the device, short-press the key  on the remote or the encoder knob [VOLUME/SOURCE] the red LED will turn off.

7. Factory Data Reset

Press the encoder knob [VOLUME/SOURCE] for 10 seconds until the LED flashes rapidly 5 times, then release. The device will restore factory data settings.

8. Important Notes

- **Edge Protection**
 - Avoid using sharp objects that might scratch or damage the sheet metal/stainless steel finish.
- **Usage Environment**
 - Ensure the operating environment is dry and free from excessive heat or humidity to maintain optimal performance.
- **Safety Precautions**
 - Do not disassemble the device. Follow the provided instructions for proper connections and operation.
 - Ensure the red wire connects the + terminal and black wire connects the - terminal
 - If the machine is not used for a long time, please unplug the power adapter from the power source.

9. Package Contents

- Speakers *2
- Manual ×1
- Infrared Remote Control (9-key) ×1
- Speaker Cable (2 meters) ×1
- Power Adapter ×1
- RCA Audio Cable (with connector, 1 meter) ×1



This device complies with Part 15 of the FCC Rules. Operation is subject to the following two conditions: (1) this device may not cause harmful interference., and (2) this device must accept any interference received, including interference that may cause undesired operation

NOTE: This equipment has been tested and found to comply with the limits for a Class B digital device, pursuant to Part 15 of the FCC Rules. These limits are designed to provide reasonable protection against harmful interference in a residential installation. This equipment generates, uses and can radiate radio frequency energy and, if not installed and used in accordance with the instructions, may cause harmful interference to radio communications. However, there is no guarantee that interference will not occur in a particular installation. If this equipment does cause harmful interference to radio or television reception, which can be determined by turning the equipment off and on, the user is encouraged to try to correct the interference by one or more of the following measures. Reorient or relocate the receiving antenna.

--Increase the separation between the equipment and receiver...--Connect the equipment into an outlet on a circuit different from that to which the receiver is connected--Consult the dealer or an experienced radio/TV technician for help.

Warning: changes or modifications not expressly approved by the party responsible for compliance could void the user's authority to operate the equipment

The device has been evaluated to meet general RF exposure requirements, the device can be used in portable exposure condition without restriction