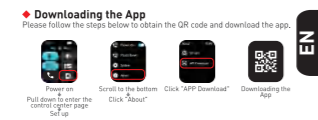
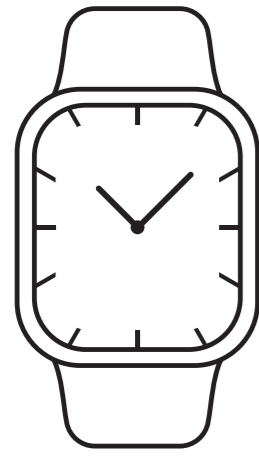


Smart Watch User Manual



• Downloading the App
Please visit the App Store or Google Play to download the app.

• Charging and Active
Charging and Active before the first use using. To charge your device, plug the watch into a power adapter or USB port on your computer.

• Pairing
Open the App and set up your smartwatch.
Go to the [Device] > [Connect a Device].
Choose your device on the scanning list.
Finish.

• Smart Watch Features
The new features on the "Settings" > "About" page could help you identify your watch on the scanning list.

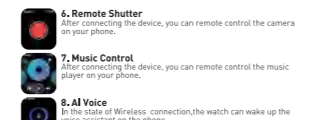
1. Wireless Calling
When you are wearing the Watch to the phone, you can use the watch to make calls. To use the phone for making calls, you need to wear the watch on your wrist. You can also make calls using the watch when you are not wearing the watch. You can also use the watch to make calls using the Phone Call function.

2. Sports
The watch automatically records steps taken on the screen. After the movement ends, it records the steps taken.

3. Training
The watch can be used on the screen to start a speed training measure. The watch will show 12 speed training data.

4. Weather
The watch can be used on the screen to start a weather forecast. The watch will show the weather forecast.

5. Message Reminder
The watch can be used on the screen to start a message reminder. The watch will show the message reminder.



6. Remote Shutter
When you are wearing the device, you can remotely control the camera on your phone.

7. Music Control
When you are wearing the device, you can remotely control the music on your phone.

8. AI Voice
In the case of Bluetooth connection, the watch can wake up the voice assistant on the phone.

9. Alarm
When the alarm is on, the device will vibrate to remind you on time.

10. Remind to Move
The device will vibrate to remind you to move after 1 hour of sitting.

11. Remind to Drink
The device will vibrate to remind you "Time to Drink Some Water" at the set time.

12. Other Features
Other features include: step counter, sleep monitor, heart rate monitor, blood oxygen saturation monitor, etc.

• General Info & Specifications
1. Environmental Conditions
Operating temperature: 0°C to 35°C (32°F to 95°F)
Storage temperature: -10°C to 40°C (14°F to 104°F)

2. Storage and Recovery
The watch is not waterproof. It is not suitable for swimming or showering. Please do not use the watch in the rain or in the sea. Please do not use the watch in the hot sun or in the hot water. Please do not use the watch in the hot air or in the hot steam.

• FCC Warning
This device is a Class 1 digital device. Operation is subject to the following two conditions: (1) the device may not cause harmful interference, and (2) the device must accept any interference received, including interference that may originate from authorized radio frequency devices. This device complies with the FCC's Part 15.247 requirements for Class 1 digital devices. Operation is subject to the following two conditions: (1) the device may not cause harmful interference, and (2) the device must accept any interference received, including interference that may originate from authorized radio frequency devices. This device complies with the FCC's Part 15.247 requirements for Class 1 digital devices. Operation is subject to the following two conditions: (1) the device may not cause harmful interference, and (2) the device must accept any interference received, including interference that may originate from authorized radio frequency devices.

• CE Marking
The watch is CE marked. It is not suitable for use in the USA, Canada, Mexico, and other countries where CE marking is not required.

• RoHS
The watch is RoHS compliant. It does not contain any hazardous substances.

