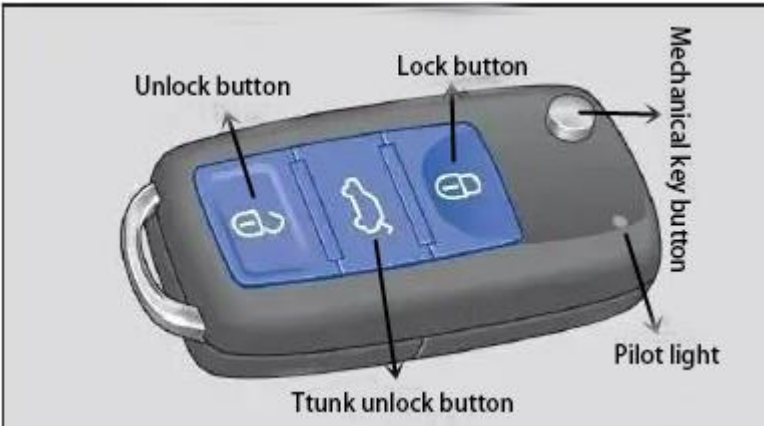


Schematic diagram of the product buttons



Function	Use the buttons on the car key :The picture above operation		
Unlock the car	Press the button		Press and hold to easily open
Lock the vehicle	Press the button		Press and hold to easily close
Unlock the trunk lid	Press the button		

Car unlocking and latching

The car can be locked and unlocked only when the battery is fully charged and the car key is within a few meters of the car's surroundings.

- When the car is locked, all turn signals flash once to confirm.
- Confirm that all turn signals flash twice when the car is unlocked. If the turn signal does not flash to confirm, at least the driver's side door is unlocked. The car cannot be locked with a key when the driver's side door is open.

If the car is unlocked without opening either door or trunk lid, the car automatically locks back after a few seconds to prevent the car from being unlocked by mistakenly pressing the unlock button.

Car key indicator

When a button on the key is pressed briefly, the indicator flashes briefly once. When a button is pressed and held for a long period of time, such as when it is conveniently turned on, the light flashes multiple times. If the indicator light in the car key does not light up when the button is pressed, the battery in the car key must be replaced.

How to turn over and fold back a mechanical key

Press the button (A, below) to unlock the key head and flip it out.

To fold back, press and hold button A and press the key head back at the same time

until it snaps.



prompt

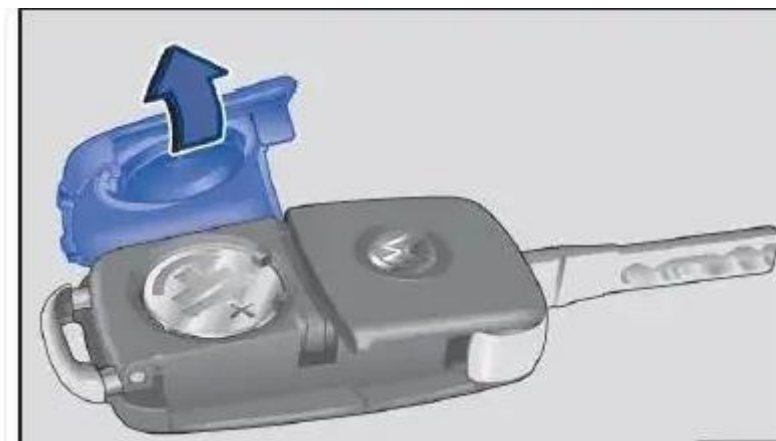
Each car key is equipped with electronic components, so it is important to keep the key safe from damage, moisture and strong vibration. When you really need the corresponding function, you can press the button on the car key. Pressing a button by mistake when it is not needed can cause the car to be unlocked unintentionally or an alarm triggered. Even if the key is not in range, do not press the button on the key at will. If there is more than one transmitter (e.g., walkie-talkie or mobile phone) operating at the same frequency in the vicinity of the car, it may interfere with each other and affect the remote control function of the car key for a short time. Obstacles between the keys and the car, adverse weather conditions, and low battery levels can reduce the range of the radio signal. If the button on the key is pressed several times in a short period of time. The central door locking system may be closed for a short period of time to prevent overloading. The car is unlocked at this point. The car can be locked if necessary.

How to replace the remote control battery

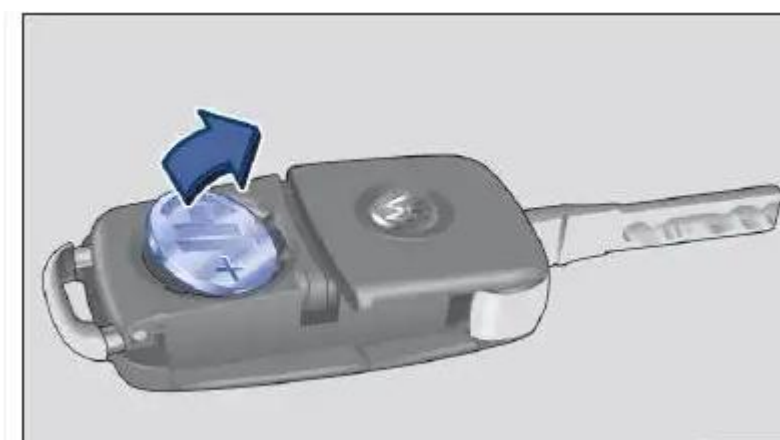
The battery is located under the cover on the back of the car key.

Replace the battery

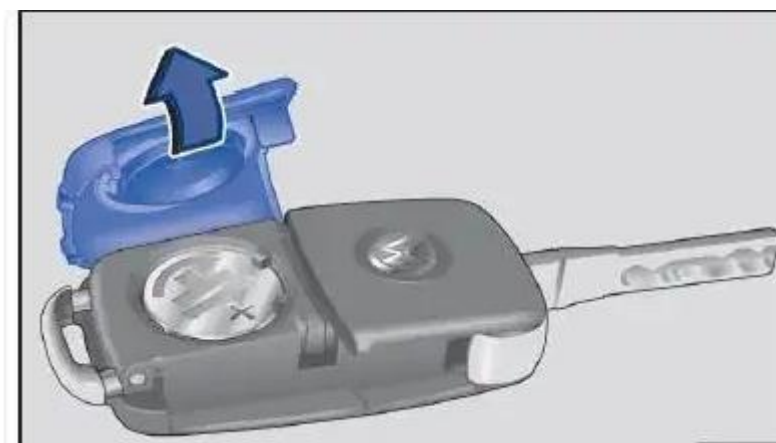
- Turn the key head outward.
- Remove the cover on the back of the key in the direction of the arrow.



- Pry the battery out of the battery compartment with a suitable flat utensil.



- Place the new battery and press it into the battery compartment.
- Place the cover in the opposite arrow direction as shown in the figure, and then press it onto the car key housing until it stops.



prompt

- Improper battery replacement may damage the car key.

- An unqualified or unsuitable battery may damage the car key. Only depleted batteries can be replaced with new batteries with the same rated voltage, construction size, and specifications.
- Be sure to install the battery according to the correct method above. Damage to the key due to self-replacement of the battery is not covered by the warranty. Be sure to dispose of waste batteries in strict accordance with the relevant provisions of the Environmental Protection Law. Batteries in car keys may contain perchlorate, so it is important to comply with regulations when handling them.

FCC Warning:

This equipment has been tested and found to comply with the limits for a Class B digital device, pursuant to part 15 of the FCC Rules. These limits are designed to provide reasonable protection against harmful interference in a residential installation. This equipment generates, uses and can radiate radio frequency energy and, if not installed and used in accordance with the instructions, may cause harmful interference to radio communications. However, there is no guarantee that interference will not occur in a particular installation. If this equipment does cause harmful interference to radio or television reception, which can be determined by turning the equipment off and on, the user is encouraged to try to correct the interference by one or more of the following measures:

- Reorient or relocate the receiving antenna.
- Increase the separation between the equipment and receiver.
- Connect the equipment into an outlet on a circuit different from that to which the receiver is connected.
- Consult the dealer or an experienced radio/TV technician for help.

Caution: Any changes or modifications to this device not explicitly approved by manufacturer could void your authority to operate this equipment.

This device complies with part 15 of the FCC Rules. Operation is subject to the following two conditions:

(1) This device may not cause harmful interference, and (2) this device must accept any interference received, including interference that may cause undesired operation.

This equipment complies with FCC radiation exposure limits set forth for an uncontrolled environment. This equipment should be installed and operated with minimum distance 0cm between the radiator and your body.