

User Manual



This instruction for use (full version) is suitable for the machine firmware. Because the firmware

Part introduction



■ flashing light
The flash will flash in the set mode. You can also set up a no-flash
■ shot
Lens used for taking photographs. Be sure not to block the lens when filming.
■ micro SD Card slot
Slot for mounting the micro SD card.
■ Reset the hole
If the camera does not function properly, press this button to force the camera off. Do not use the reset button when the camera works properly. Otherwise it may result in the loss of the photo data.
■ USB port
USB port is only for charging for data transfer.
■ Camera rope hook
For the mounting of the shoulder strap / camera rope.
■ MIC
For calls, recordings, and voice recognition
■ Switch button
Short press the screen, long press 3s shut down.
■ Photo button
Half-press the shutter button to focus the subject. Half-press and the shutter button to the bottom, you can complete the photo shooting. Press the shutter button in playback mode to cut back to shooting mode.
■ pilot light
When the camera is charging, the left indicator light is red and the full light is off. When the camera is working, the right indicator light is blue and the shutdown light is off.
■ T (blow up) button
Support for camera / picture amplification

Part introduction

■ W (deflate) button	■ ▲ button
Support for camera / picture reduction	Press ▲ on the camera screen to show / not display the grid line, or go up on the menu screen.
■ ▼ button	■ OK button
Press the ▼ in the camera interface to set the selfie timing, and in the menu interface, choose down	In the camera interface, press the ok button to select the mode, in the menu interface is to enter the lower menu
■ ◀ button	■ M (carte) button
Press ◀ on the camera interface can turn on or off the macro function, and choose to the left on the menu interface	Press M in the camera interface, enter the menu setting interface, and press again to return to the camera interface
■ ▶ button	■ 📺 (playback) button
Press ▶ short on the camera screen to set the flash mode, and choose to the right on the menu screen	In shooting mode, this button switches to playback mode. Click again to return to the shoot mode

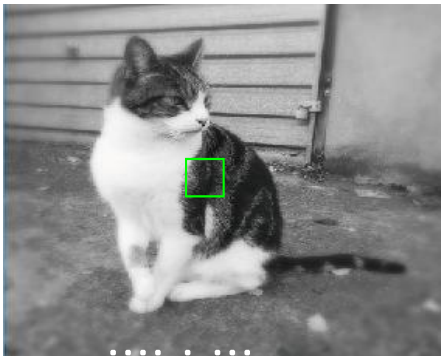
Six views



Basic shooting

Give the following instructions about the basic photo-taking steps.

- 1 Turn on the power supply
- 2 Hold the camera.
- 3 Set the lens effect according to individual needs.
- 4 Determine the composition.
Press either W or T to adjust the composition. Press T to enlarge the shooting picture, and press W to reduce the enlarged shooting picture.
- 5 Half-press the shutter button to focus the subject.



A "beep" is heard during focus, and a green autofocus box appears on the LCD.

- 6 Half-press the shutter button, press the shutter button completely

- When taking photos, keep your arms close to your body and hold the camera firmly with both hands.
- Be careful not to touch the camera lens when pressing the shutter button.
- When pressing the shutter button to the end, please press it gently to avoid the camera shaking.
- Be careful not to block the fingers or strap from the flash or lens.
- Flash, when you push the shutter button to the bottom. You can change the flash settings so that the flash does not flash.

- Notes about the memory
- When the memory is full, the shutter cannot be released and pictures cannot be taken. Please remove some images, or use a memory card.
- Images in memory may be damaged or lost due to a camera failure.
- It is recommended to copy important images to other media (hard disk, CD-R, CD-RW, DVD-R, etc.), serves as a backup.
- We cannot guarantee the integrity of the data in the memory after the camera is repaired.

Basic playback and playback settings

You can replay the taken images on the LCD monitor.

- 1 Turn on the power supply
- 2 Press the (📷) button to display the last photo taken.
- 3 Press ◀ or ▶ to select the image you want to display. Press (📷) short again, and you will return to the shooting interface.

Replay the picture

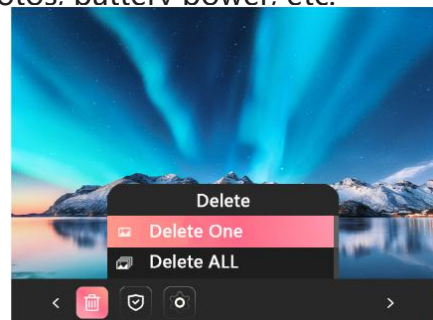
You can zoom in or out, or roughly view all images.

- Reduce the image

- 1 Next ◀ or ▶ Select the image you want to display.
- 2 Press W or T to display the zoom in or out screen.



- 3 Under the normal image, short pressing W can roughly view the nine-grid image
- 4 Short press ▲ can turn on / off the watermark (including time, total number of photos, battery power, etc).



- 5 Short-press ▼ to delete the selected photo.
- 6 Short press M to display the playback menu bar, you can delete photos, encrypt, set the language and so on

Add effects for a photo

Choose the lens effect

Follow the following steps to select the type of lens effect.

- 1 Show the shot picture.
- 2 Press ok [confirm] to select the type of lens effect.
- 3 Choose the desired style



Take a photo with a flash light

Use a flash when taking pictures at night or in dim rooms. You can also set it up to prevent the flash light.

- 1 Press ► on the shot to enter the flash setting.



- 2 Press ◀ or ▶ to select the flash settings.
- 3 Press the shutter button through through

The type of flash

⚡ Automatic flash

The flash will automatically flash when the surroundings is dark. This setting applies for most situations.

⚡ Forced flash

The flash flashes regardless of the brightness of the surroundings. This setting is recommended when the subject is dark due to the backlight.

⚡ No flash

The flash does not flash even when the surroundings are dark. This setting applies to filming in places where the flash is disabled.

When shooting in the dark without a flash, it is recommended to hold the camera on a table for shooting

Macro shooting

Use the macro shooting feature when photographing subjects in close proximity.

- 1 Press ◀ on the shooting screen, enter the macro shooting setting, and continue to press ◀ or ▶ to select the macro on or off.



- 2 Press the shutter button to the end for macro or shooting..

gridlines

You can press ▲ to open the grid line and press ▲ to close the grid line



Use the selfie-taking-timing function

In the need to take a group photo including the photographer, or want to prevent the camera in the photo shoot This function can be used when the shutter button is pressed

- 1 Press ▼ on the shooting screen, and enter the selfie timing setting



- 2 Press ◀ or ▶ to select [2 seconds] [10 seconds].
An icon corresponding to the set selfie function will appear in the center of the screen.
If the selfie function is not set, select [off].
- 3 Press the shutter button through through
Countdown began
If selected for [2 seconds]:
A beep prompt appears when you press the shutter button.
If selected for [10 seconds]:
When you press the shutter button, the timing starts and then flashes 2 seconds before the photo.

To cancel the selfie during the selfie, please press

Shooting menu

You can change the various settings related to shooting from the shoot menu

- 1 Press the M button short in the shooting interface to enter the menu interface



- 2 Press the ◀ or ▶ button to select the items.
- 3 Press the ▲ or ▼ button to change the settings.
- 4 Pressing the OK (confirm) button will apply the changed settings and return to the shooting interface

■ Shooting menu items

[colour]

You can choose your favorite shooting style here, support: retro, black and white, nostalgic, bright, gradually halo, sketch.

[Optometry mode]

You can switch between three different metering modes to help you get the right exposure in different light environments.

[Shooting Dimensions]

Different shooting sizes can be set.

【ISO】

You can set up a different ISO.

[exposure]

Different levels of exposure can be set.

[Face Beauty]

[Face Beauty] When on, the camera will recognize the face and focus the focus And the brightness gathers to the face rather than the background,

making the character more prominent.

[Photo date printing]

The watermark of the time and date can be displayed on the photos taken

Settings: [off], [date], or [time / date]

【setting】

1, WiFi

Scan the QR code and download the corresponding APP.After downloading, the phone's App Connect to the hotspot name displayed on the machine side, Enter the password, 12345678,Wait for the successful connection of the mobile phone and the machine.

The phone will display the camera preview screen on the machine, and the machine will turn off Close any operation and show only the camera preview screen.



2, Light source frequency

Set two frequencies: [50Hz], [60Hz].

3, Sound setting

You can set the volume of the camera operating sound, respectively:[Closed], [Low], [middle], [high]

4, language

Set the language displayed on the camera.

5, Date time

Set the date and the time.

6, auto shut off

After the set time is not operated, the phase will automatically shut down in order to save power, If you do not want to shut down automatically, please set this to [off].

7, and the LCD brightness

Set the brightness of the display screen.

8, Format

If the memory is full and the image in the card has been backed up, you can format the card here.(Note: Format atting ars all files in the memory card)

9, resetting

Restore the settings to the factory default settings.

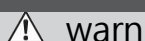
10, and the firmware version

Displays the current firmware version WiFi

FAQ

phenomenon	Possible causes and solutions
Unable to turn on the camera	The battery may not be charged. Please charge up for the camera.
Battery power consumption is too fast	If the camera is used in very cold places, the battery consumes very quickly. Please give up before filming Machine warming
Can't charge	Ensure that the USB power adapter plug is properly connected to the indoor power outlet. Disconnect the power supply when charging. Charging cannot be performed under the power supply state.
Press the shutter button cannot take a picture	Ensure that the power supply is turned on. If the battery level is low, please charge the camera. If the memory or memory card is full, insert a new memory card or remove an unwanted image. Use a memory card that is formatted locally. If the contact surface of the memory card (the gold part) is dirty, wipe it clean with a dry, soft cloth. The memory card may be damaged. Please insert a new memory card. Maybe currently in a half-press state, in the calibration mode, please fully press and can hear the shutter sound.
The flash light does not flash	Did you select no flash in the flash setting? Please select a setting other than a prohibited flash.
The image is blurred	If a fingerprint is attached to the lens, please clean the lens. Make sure the autofocus box is green before taking photos. Be sure to keep the camera stable, especially in the dark.

Notice of safe use



warn

⚠ If the following situation occurs, please immediately unplug the USB charging cable, power off the camera, and stop using the camera.

- The camera is hot, smoking, burnt, or has other abnormal conditions.
- The camera falls into the water, or foreign objects such as water and metal enter inside the camera.

⚠ This device uses a built-in battery, so do not heat the camera, put the camera in an open fire, or fall against the camera.



warn

⚠ Do not attempt to dismantle the product. May lead to an injury.

⚠ If the product is exposed due to fall or damage, do not touch it, which may cause injury. Please contact your dealer.

⚠ Do not wet or touch this product with wet hands. Could lead to an electric shock. Unplug the USB charging cable immediately after the battery is fully charged.

⚠ Do not store them at the reach of the children. May lead to injuries to children.

⚠ Do not cover or wrap the camera or AC power adapter with a cloth or blanket. Overheating can cause the camera to deform and even cause a fire.

FCC Warning

This device complies with part 15 of the FCC rules. Operation is subject to the following two conditions: (1) this device may not cause harmful interference, and (2) this device must accept any interference received, including interference that may cause undesired operation.

Changes or modifications not expressly approved by the party responsible for compliance could void the user's authority to operate the equipment.

NOTE: This equipment has been tested and found to comply with the limits for a Class B digital device, pursuant to part 15 of the FCC Rules. These limits are designed to provide reasonable protection against harmful interference in a residential installation. This equipment generates uses and can radiate radio frequency energy and, if not installed and used in accordance with the instructions, may cause harmful interference to radio communications. However, there is no guarantee that interference will not occur in a particular installation. If this equipment does cause harmful interference to radio or television reception, which can be determined by turning the equipment off and on, the user is encouraged to try to correct the interference by one or more of the following measures:

- Reorient or relocate the receiving antenna.
- Increase the separation between the equipment and receiver.
- Connect the equipment into an outlet on a circuit different from that to which the receiver is connected.
- Consult the dealer or an experienced radio/TV technician for help.

Specific Absorption Rate (SAR) information

This device meets the government's requirements for FCC exposure limits set forth for an uncontrolled environment. This device was tested for typical body-worn operations with the back of the mobile phone kept 0 mm from the body. To maintain compliance with FCC RF exposure requirements, use accessories that maintain an 0 mm separation distance between the user's body and the back of the Digital Camera. The use of belt clips, holsters and similar accessories should not contain metallic components in its assembly. The use of accessories that do not satisfy these requirements may not comply with FCC RF exposure requirements, and should be avoided.