

1. Antenna Description:

Antenna type	Ceramic antenna
Model	A207
Frequency range	2400-2500MHz
Manufacturer	Shenzhen ROSOTO Technology Co., Ltd.
Address	2F, Building A&E, Debaoli Industrial Park, Shangxue Technology Zone, Xinxue Community, Bantian Subdistrict, Longgang, Shenzhen, Guangdong, China
ANT Peak Gain	1.66dBi

2. Antenna Photo:



3. Test Equipment & Conditions

3.1 Test instrument

VSWR is tested using Agilent E5071B connected to a hand mechanism, and the status is free space.

3.2 Test environment and methods

Dark room specifications: ETS-743

TD-SCDMA test equipment: StarPoint SP6010/Agilent 8960

LTE-TDD/FDD-SCDMA test equipment: StarPoint SP8011/CMW500

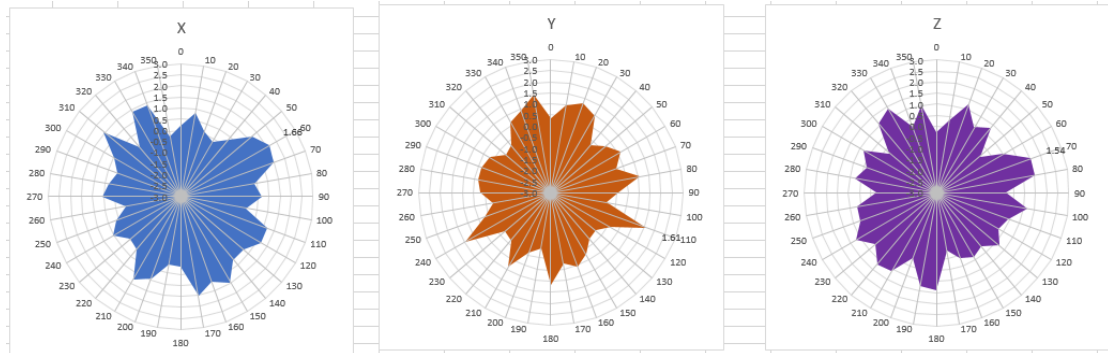
WCDMA/GSM/CDMA test equipment: Agilent 8960

Passive efficiency testing equipment: Agilent Technologies E5071B

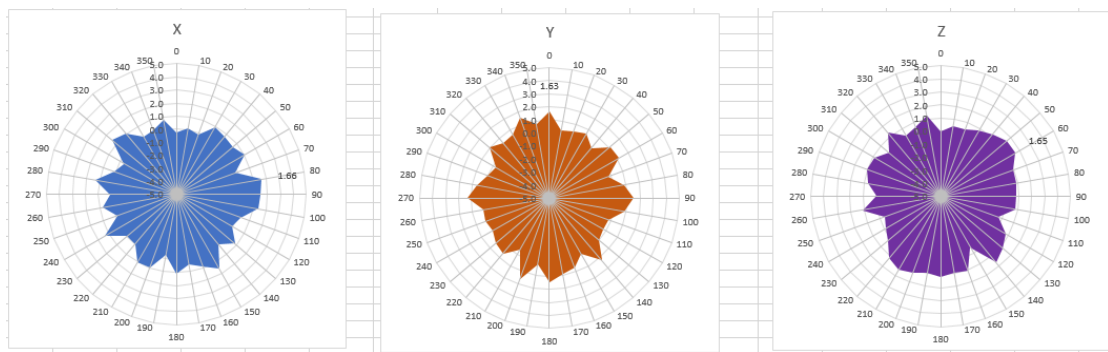


4 . Antenna Radiation Pattern

2400MHz



2450MHz



2500MHz

