

Instruction

1:24 R/C DRIFT RETURNS

V2022.01

GB USA Dear customers:

- Thank you for purchasing our RC model car. As we always strive to develop and improve our products, we reserve the right to make changes on technologies, functions, materials and design at any time without prior notice.
- No claims will be accepted for any slight differences between the product you have received and the data or illustrations in the manual.
- Please read this manual carefully before using the product.
- Please keep this manual for future reference and in the event that the product is passed on to a third party.

Warnings!

Improper use of the product may result in serious injury or property damage. The manual contains technical safety regulations and information on maintenance and operation.



Warnings!

This model car is not safe for children under the age of three, as the small components may cause harm to them. Remove all packing materials and wire fasteners before giving the model car to children.



This symbol indicates not to mix exhausted batteries, rechargeable batteries, button batteries, rechargeable battery packs, equipment batteries, and discarded electrical equipment in household waste, because they are harmful to the environment and health. Please protect the environment and your health and tell your children to properly dispose of the used batteries and discarded electrical equipment. Do not mix different types of batteries, or the old and new batteries. Connect the correct polarity of the battery. Take the exhausted batteries out of the product. Do not charge the non-rechargeable batteries, as it may cause explosion. Take the rechargeable battery out of the toy before charging. Avoid short circuits in the power terminal. Rechargeable batteries can only be charged by adults or children above the age of eight. For batteries and charger used for the model car, check their power wires, plugs, casing and other components regularly for any damages. If there are damages, do not use them before repair.

Safety instructions

- The RC model car is designed for amateurs and can be used only in an open space. **Warnings!** Do not use RC vehicle in road traffic.
- Do not play it on grass surface. Do not use it to transport goods, people or animals.
- Do not play it outdoors in a rainy or snowy weather. Do not drive this non-amphibious car in water, puddle or snow, and always park it in a dry place.
- Do not drive the RC car near the river, pond or lake, avoid the risk of falling into the water. Do not drive on a runway that is completely covered with sands.
- Do not expose the RC car to direct sunlight.
- Always Place the car on the floor by hand. Never throw the car on the floor from a standing position.

- Never jumping from jumps or ramps higher than 5 cm (0.16 ft).
- The model car must be checked before and after operation. Tighten the screws or nuts that may be loose.
- Do not modify the model car without permission, because this may cause damage to the car or serious injuries.

Rechargeable batteries available (note to buy the correct model)

- Remove the battery box cover with a screwdriver. Insert the rechargeable battery into the car in correct polarity. Tighten the battery box cover with a screwdriver.

Install the non-rechargeable battery in the car (Mindful of the model version)

- Remove the battery box cover with a screwdriver. Insert the non-rechargeable battery into the car in correct polarity. Tighten the battery box cover with a screwdriver.

Install batteries into the remote controller

- Open the battery box cover with a screwdriver and insert the non-rechargeable battery into the remote controller in correct polarity. Tighten the battery box cover with a screwdriver.

Now you can drive

- Set the switch of the car to the "ON" mode.
- Turn on the controller. The LED on the controller will flash, and then turn off in several seconds, indicating that the controller is successfully matched to the car. The LED is on when the controller works.

How to operate the RC model car?

- Please read the illustrations and instructions carefully for proper operation of the car.

How to charge batteries? (Note to charge the rechargeable batteries only)

- Please read the illustrations and instructions carefully for proper charging of the battery. For first-time usage, charge the battery for at least 4 hours. For subsequent usage, charge 3 to hours.

Solutions for breakdowns

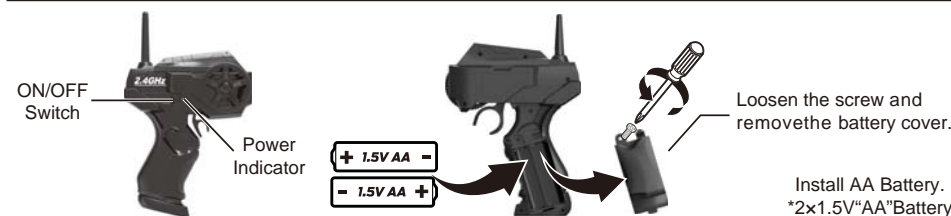
The car does not work

- Set the switch of the transmitter and the vehicle to the "ON" mode.
- Check if the battery or battery pack is connected in correct polarity.
- Check the battery contact for any damages.
- Check the battery for power capacity.
- Check the car and controller for correct connection (see 5).

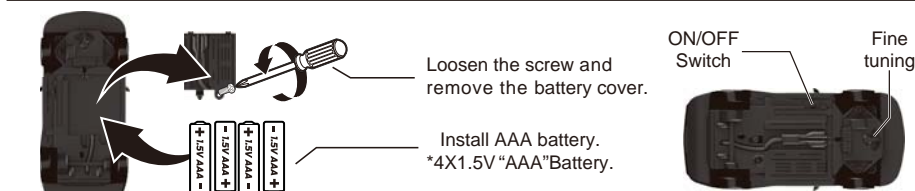
The car cannot work normally: the launch distance is too short!

- Is the battery power decreasing?
- Are there any other RC car devices transmitting at the same frequency nearby?
- Are there metal railings causing interference?
- Are there walkie-talkie/wireless networks nearby causing interference?
- If the car is hot, turn off the car and controller and cool the car for about 30 minutes.

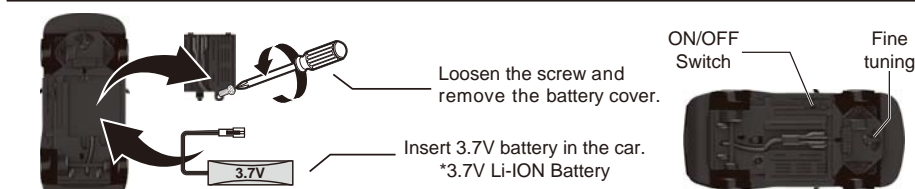
Install the controller batteries



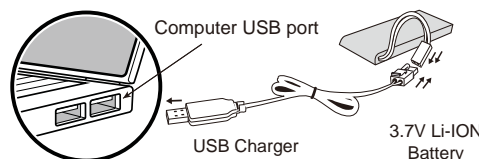
Install AAA Battery (Non-Rechargeable) In the car. Be mindful of the model version.



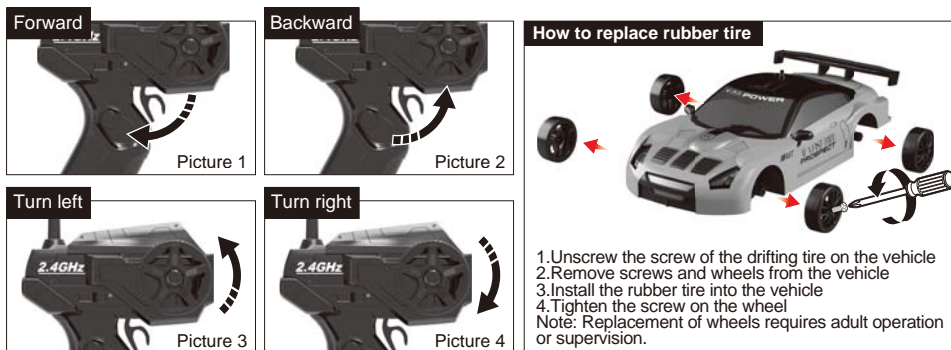
Install Battery pack (Rechargeable) In the car. Be mindful of the model version.



Method for charging battery pack.



RC car user guide



FCC Statement:

This device complies with part 15 of the FCC Rules. Operation is subject to the following two conditions: (1) This device may not cause harmful interference, and (2) this device must accept any interference received, including interference that may cause undesired operation.

This equipment has been tested and found to comply with the limits for a Class B digital device, pursuant to part 15 of the FCC Rules. These limits are designed to provide reasonable protection against harmful interference in a residential installation. This Equipment generates,uses and can radiate radio frequency energy and,if not installed and used in accordance with the instructions,may cause harmful interference to radio communications.However,there is no guarantee that interference will not occur in a Particular installation.If thise quipment does cause harmful interference to radio or television reception, which can be determined by turning the equipment off and on, the user is encouraged to try to correct the interference by one or more of the following measures:

—Reorient or relocate the receiving antenna.

—Increase the separation between the equipment and receiver.

—Connect the equipment into an outlet on a circuit different from that to which the receiver is connected.

—Consult the dealer or an experienced radio/TV technician for help.

Caution: Any changes or modifications not expressly approved by the party responsible for compliance could void the user's authority to operate the equipment.

This equipment complies with FCC radiation exposure limits set forth for an uncontrolled environment. This transmitter must not be co-located or operating in conjunction with any other antenna or transmitter.

产品操作说明书

1:24四驱漂移车

V2022.01

尊敬的顾客

- 非常感谢您购买遥控模型车。由于我们一直在努力开发和改进我们的产品，我们保留在任何时候进行修改的权利，无论是技术性质的修改，还是在功能、材料和设计方面的修改，都无需事先通知。
- 如果您的产品与说明书中的数据和插图有任何细微的偏差，我们将不接受任何索赔。
- 使用产品前请仔细阅读说明书，做到正确使用。阅读完毕后请保存说明书以备将来参考，并在产品被传递给第三方的情况下可以使用。

警告！

不正确使用可能导致严重伤害或财产损失，必须小心谨慎的操作。操作说明书包含安全技术规程的说明，以及维护和操作产品的信息。



警告！

本玩具含有小零件，可随意翻动，不适合3岁以下儿童使用。在把玩具交给孩子之前，先拆下所有包装材料和电线紧固件。



这个符号表示不能把空电池、充电电池、纽扣电池、充电电池组、设备电池、废弃的电气设备丢弃在生活垃圾中。因为它对环境和健康有害。请保护环境和健康，并告诉您的孩子如何正确处理用过的电池和废弃的电气设备。不能混合使用不同类的电池，也不要同时使用新旧电池。电池的极性要正确。空电池应该从产品中取出。请勿给不可充电的电池充电，以免发生爆炸。可充电电池在充电前必须从玩具中取出。电源端子不得短路。可充电电池只能由成人或至少8岁的儿童进行充电。与玩具一起使用的电池与充电器应定期检查电源线、插头、外壳和其它部件是否有损坏，如有损坏，在修复之前不得使用。

安全指令

- 1 遥控模型车是专为业余爱好者使用，并只能在空闲的场地使用。**警告！**切勿在拥挤的道路上使用遥控模型车。
- 2 切勿在草地上使用本产品。切勿使用遥控车运送货物、人或动物。
- 3 在下雨或下雪时，切勿在户外使用遥控车。不是水陆两栖的车辆不能在水、水坑和雪地中行驶，必须始终存放在干燥的地方。
- 4 切勿在河流、池塘或湖泊附近驾驶车辆，以免出现车辆落水的危险。避免在完全铺有沙子的跑道上行驶。
- 5 不要将遥控车在阳光下曝晒。
- 6 用手把车辆放在地板上。不要站着把车辆扔在地板上。
- 7 避免从高于5厘米（0.16英寸）的跳台或坡道上跳下。
- 8 遥控模型车必须在使用前和使用后进行检查，以确保车辆正常使用。任何在操作过程中可能松动的螺丝或螺母都必须拧紧。
- 9 请不要随意改装遥控车，这会导致车辆损坏或严重伤害。

车辆安装可充电电池（注意对应购买的版本）

- 1 用螺丝刀将车辆的电池箱盖取下。将可充电电池插入车内，确保极性正确。用螺丝刀重新将电池箱盖拧紧。

车辆安装不可充电电池（注意对应购买的版本）

- 2 用螺丝刀将车辆的电池箱盖取下。将不可充电电池插入车内，确保极性正确。用螺丝刀重新将电池箱盖拧紧。

遥控器安装电池

- 3 用螺丝刀打开电池箱盖，将不可充电电池装入遥控器，确保极性正确。用螺丝刀重新将电池箱盖拧紧。

现在您可以开车了

- 4 1. 将车辆上的开关置于“ON”位置。

- 5 2. 打开遥控器开关。遥控器上的LED将会闪烁，几秒钟后，遥控器的LED将熄灭，这意味着遥控器与车辆对频成功。遥控器开始操作时，LED才会点亮。

如何玩遥控车？

- 6 请仔细阅读本说明书的插图与说明，它将教会您如何正确操作遥控车。

如何给电池充电？（注意购买的版本是可充电电池，才能给电池充电）

- 7 请仔细阅读本说明书的插图与说明，它将教会您正确的给电池充电。在首次充电的时候，充电时间至少要4小时，之后充电时间是3-4小时。

故障排除

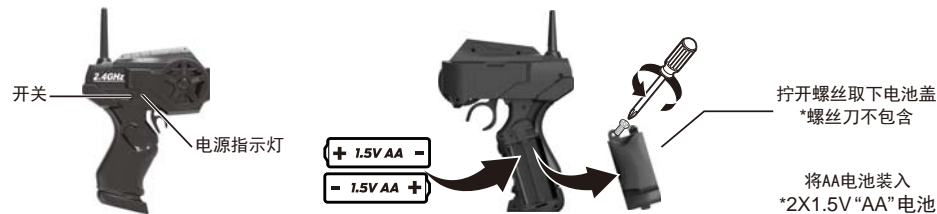
车子坏了

- 将遥控器和车辆上的开关置于“ON”位置。
- 检查电池或电池包极性是否正确？
- 电池触点是否损坏？
- 电池电量是否耗尽或有缺陷？
- 车辆和遥控器是否连接正确（see 5）？

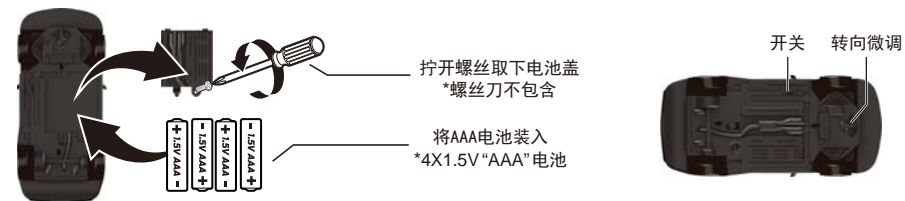
车辆不能正常工作；发射距离太短！

- 电池电量是否在衰减？
- 附近是否有其它遥控装置以相同的频率发射？
- 是否有金属栏杆造成干扰？
- 附近是否有对讲机/无线网络可能造成干扰？
- 车子很暖和。关掉车子与遥控器开关，让车子冷却大约30分钟。

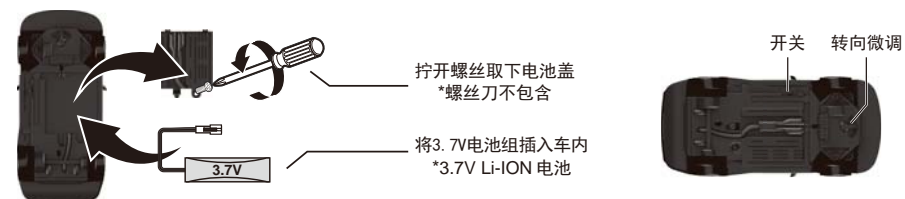
遥控器电池安装



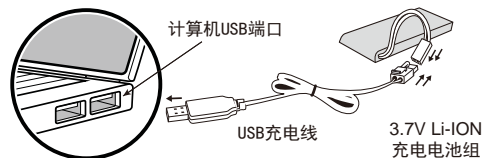
车辆AAA电池安装（不可充电），请对应购买的版本



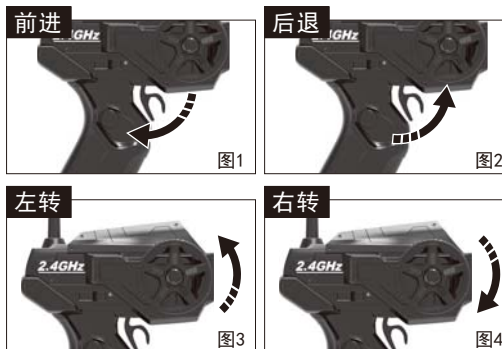
车辆电池组安装（可充电），请对应购买版本



电池组的充电方式



遥控车操作教程



如何更换橡胶轮胎

