

# RC car instruction manual

To ensure proper use, please read the following instructions and fully understand the product before use.

## Product maintenance:

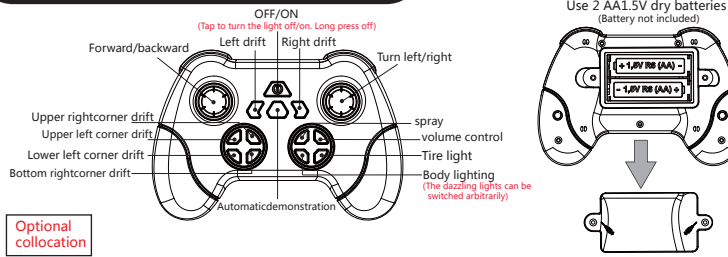
This product contains electronic components, do not use in water or damp environment. Wipe the surface with a cloth.

## Electronic control products:

Suitable for children over 6 years old.

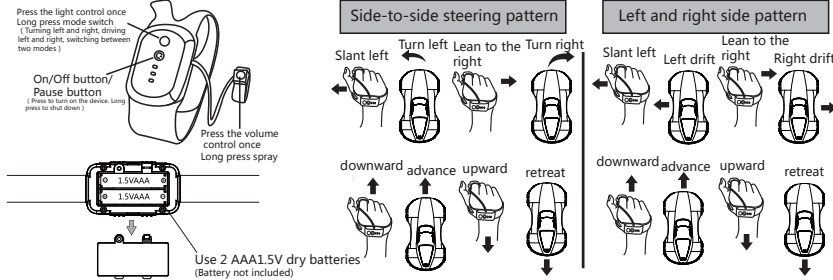
All electronic products should be used with care to prevent electric shock

## Function description of remote control



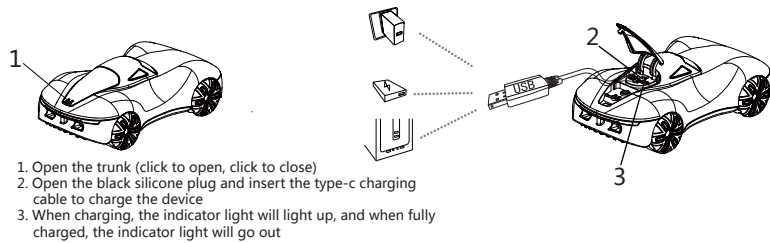
Optional collocation

## Watch remote control function description



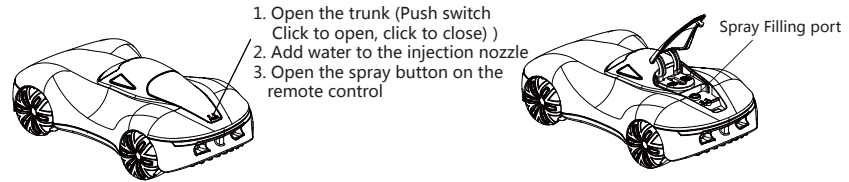
Note: To use the watch remote control, you need to turn off the handle remote control, and then restart the remote control car for frequency. (Two remote controls cannot be used at the same time)

## Charging function instructions



Note: The remote control car switch must be turned OFF to OFF gear when charging

## Spray function description



## FCC Warning Statement

Changes or modifications not expressly approved by the party responsible for compliance could void the user's authority to operate the equipment. This equipment has been tested and found to comply with the limits for a Class B digital device, pursuant to Part 15 of the FCC Rules. These limits are designed to provide reasonable protection against harmful interference in a residential installation. This equipment generates uses and can radiate radio frequency energy and, if not installed and used in accordance with the instructions, may cause harmful interference to radio communications. However, there is no guarantee that interference will not occur in a particular installation. If this equipment does cause harmful interference to radio or television reception, which can be determined by turning the equipment off and on, the user is encouraged to try to correct the interference by one or more of the following measures:

- Reorient or relocate the receiving antenna.
- Increase the separation between the equipment and receiver.
- Connect the equipment into an outlet on a circuit different from that to which the receiver is connected.
- Consult the dealer or an experienced radio/TV technician for help.

This device complies with part 15 of the FCC Rules. Operation is subject to the following two conditions: (1) This device may not cause harmful interference, and

(2) This device must accept any interference received, including interference that may cause undesired operation.

NOTE: This device and its antenna(s) must not be co-located or operation in conjunction with any other antenna or transmitter.

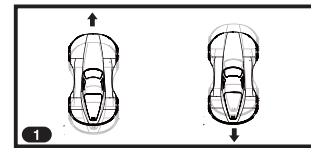
The device has been evaluated to meet general RF exposure requirement. The device can be used in portable exposure condition without restriction.

## Meteoro super corrida

NO:HH1104

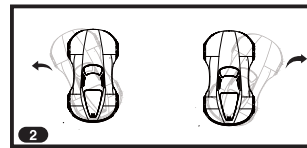
### Forward/backward

Operate the remote control forward/backward function button, control the remote control car forward and backward



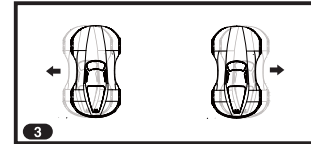
### Turn left/right

Operate the remote control left/right turn function button, control the remote control car left and right turn



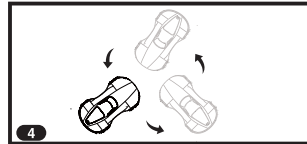
### Left drift/right drift

Operate the remote control left horizontal/right horizontal function button, control the remote control car left drift and right drift



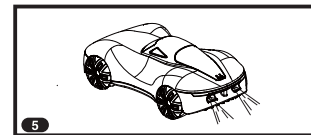
### 360° rotation

Long press the remote control to turn left or right to control 360 degree rotation of the remote control car



### spray

Operate the remote control spray function button, control the remote control car spray



### Automatic demonstration

Operate the remote control automatic demonstration function button, control the remote control car in different directions automatic demonstration

