

Dash cam HC3002

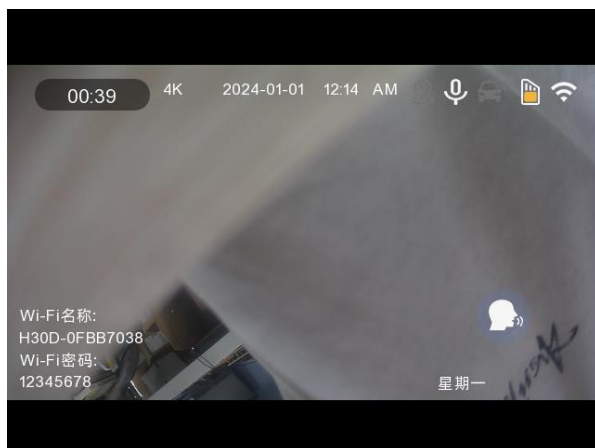
1. Basic Configuration/BASIC EQUIPMENT

CPU	SA230D
Pre-Sensor	GC4653 (customer selected)
After Sensor	1080P Sensor (customer optional)
Reversing Image	support
Display	3-inch high-definition IPS screen 640*360 resolution (customer choice)
DDRM	2G bit
SPI NOR Flash	16M Bytes
Audio	Yes, recording is supported
G Sensor	Support (customer optional)
GPS	Support (customer optional)
WIFI	5.8G
RTC	Yes, built-in system clock
Memory Card	SDHC Class10 (8GB ~ 128GB), speed C10 or above
Key	7 Key
Battery	Built-in lithium battery (500MA or above)
Compression format	H264
File Format	The image file format is TS, the photo format is JPG
Voice control	Support (Speech Chinese and English) (customer selection)
Algorithm	Customer selection
Operating temperature	-20-65°C (Storage temperature: -30-70°C)
Operating current	5V 900ma (need car charger 5V 1.5A)
RTC quiescent current	2uA (button battery fully charged can be used for 1 month) (customer optional)
Complete quiescent current	6mA

2. Introduction to main functions

Photography mode

When a TF card is inserted into the machine, it will automatically enter the video recording mode after powering on. When recording, a logo will flash in the upper left corner of the screen.



Short press the upper button to record and capture, long press the upper button to turn on/off wifi;

Short press the menu button to enter the system settings, long press has no function;

Short press the lower button to turn on/off recording, long press has no function;

Short press the OK button to start/stop recording, long press has no function;

Short press the M button to switch the front and back windows, long press has no function;

Short press the lock button to record and lock, long press has no function;

Main interface mode

After powering on, it will automatically enter the recording mode. Short press the menu button to enter the main interface



Short press the up button to select the menu upwards;

Short press the menu button to return to the recording interface;

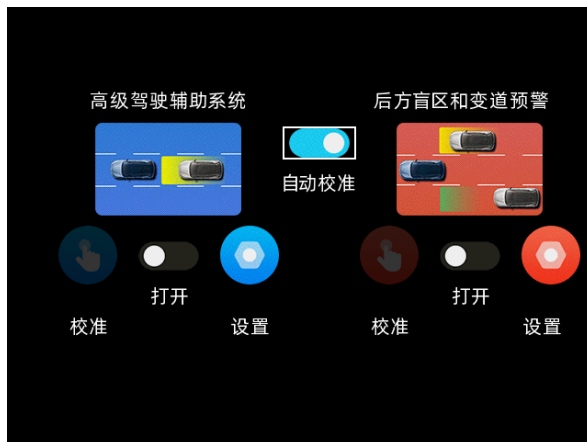
Short press the down button to select the menu downwards;

Short press the OK button to confirm the selection;

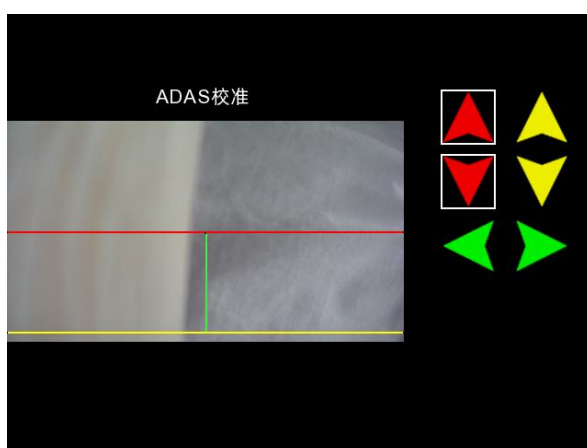
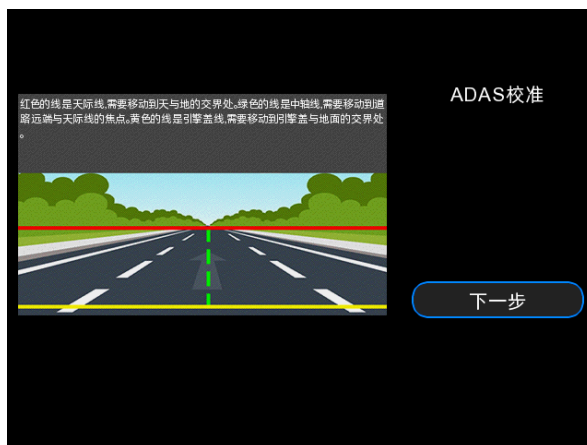
Short or long press the mode button or lock button has no function;

Intelligent driving mode

After powering on, enter automatic recording, short press the menu button to enter the main interface, short press the up/down button to select smart driving, and then short press the OK button to enter the smart driving calibration settings.



After turning off the automatic calibration, short press the up/down key to select the ADAD calibration operation icon, and short press the OK key to enter the ADAS calibration interface (as shown in the figure)



The lines in the image correspond to the arrows of the same color on the right. Short press the OK button to switch the lines (color arrows). Short press the up button (left) to adjust the lines. Short press the down button (right) to adjust the lines. Short press the menu button to save the settings and exit the ADAS calibration interface.

ADAS settings

Front vehicle collision warning: high, medium, low, off

Lane change line pressure warning: high, medium, low, off

Pedestrian collision warning: high, medium, low, off

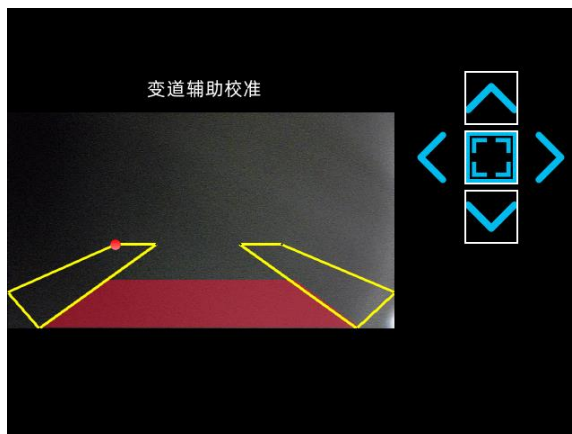
Front vehicle start warning: high, medium, low, off

Vehicle distance warning: high, medium, low, off

Alarm tone: off, on

Lane line and frame display: off, on

After turning off automatic calibration, short press the up/down button to select the lane change assist calibration operation icon, and short press the OK button to enter the lane change assist calibration interface (as shown in the figure)



The square area in the image is the blind spot alarm area. Short press the up button to move the red dot of the box up (left), short press the down button to move the red dot of the box down (right), short press the OK button to switch the red dot of the box, short press the M button to switch the direction (or long press the menu button), short press the menu button to save the setting and exit the calibration interface

Blind spot monitoring settings (Note: The monitoring sensitivity is the relative speed between the detected object and the vehicle. The higher the sensitivity, the easier it is to trigger the alarm)

Alarm sensitivity: high (alert when detected), medium (alert when relative speed ≥ 0 km/h), low (relative speed ≥ 10 km/h), very low (relative speed ≥ 20 km/h)

Speed threshold: 0km/h, 30km/h, 50km/h, 80km/h, 100km/h

Alarm prompt sound: off, on

Show alarm area and prompt box: off, on

Playback mode

After powering on, enter the recording mode to record automatically. Short press the menu button to enter the main interface, select the playback mode, and short press the OK button to enter the playback mode.



Short press the up button to select the file, short press the down button to select the file, short press the OK button to play, short press the menu button to return to the previous level; short press the lock button to add/unlock files in the list interface (no function in the picture file list), short press the M button to delete files; short press the OK button to pause/start playing when playing files, short press the up/down button to switch file playback

Note: Currently, ordinary files account for 70% of the total card capacity, locked files account for 30% of the total card capacity, and picture files are recorded 200 times before and after. When the file capacity is reached, it will be deleted in a loop.

System Settings

After powering on, enter the video recording mode to record automatically. Short press the menu button to enter the main interface and select the setting mode. Short press the OK button to enter the setting mode.

Recording resolution: 1080P, 2.5K, 4K

Loop recording: 1 minute, 2 minutes, 3 minutes

Light source frequency: 50Hz, 60Hz

Gravity sensor sensitivity: Off, Low, Medium, High

Parking monitoring: Off, Low, Medium, High

Time-lapse recording: Off, 1FPS/S, 2FPS/S, 5FPS/S

Time-lapse recording duration: 12 hours, 24 hours, 48 hours, 72 hours

Recording: Off, On

Video watermark: Off, On

WDR: Off, On

Night vision without light: Off, On

Rear camera direction: Keep original image, Up Upside down, left and right mirror, upside down + left and right mirror

Volume settings: Off, Low, Medium, High, Highest

Key tone: Off, On

Screen sleep: Off, 1 minute, 3 minutes

Language settings: English, Simplified Chinese, Traditional Chinese

Voice control: Off/On and voice command display

Display time and date: Off, On

WiFi information: Off/On and account password display

Time settings: RTC system time

Disk formatting: Confirm, Cancel

Version information: System version number

Restore factory settings: Confirm, Cancel

Note: The time-lapse video setting needs to be equipped with a special step-down line for the car to be displayed; the voice control commands include turning on the screen, turning off the screen, showing the front road, showing the back road, viewing all, turning on recording, turning off recording, video lock, and taking pictures. Except for the two commands of turning on the screen and turning off the screen, other commands are only functional when shouted in the video recording interface.

Power button: short press to turn on the screen in any interface, and long press to turn off.

3. Precautions

1. Note: Please do not remove or insert the TF card when the machine is working to avoid damage.
2. Please pay attention to the direction of the TF card insertion. If it is inserted upside down, it may damage the machine and the TF card.
3. When you insert the TF card into the machine, the machine will set the TF card as the default storage device, and the data in the original TF card may not be read.

1. If the TF card is incompatible with the machine, please insert it again or change another TF card and try again.
2. Support up to 128G
3. Temperature range -20~70° C

If the recorder shows that the card is full or the card is wrong, it cannot record:

1. The new card is used on the machine for the first time, and it must be formatted on the machine before use.
2. If it prompts a card error or prompts that there is no card after inserting the card, it is recommended to re-insert the TF card and format it. If it still doesn't work, take the card to the computer to try whether it can be formatted. If not, the card is broken.
2. If it prompts card error or no card after inserting the card, it is recommended to reinsert the TF card and format it. If it still doesn't work, take the card to the computer to see if it can be formatted. If not, the card is broken.

IV. System error message definition

Error message	描述	解决方法
Card not inserted	No memory card detected, unable to record	Please insert the card
No file	1 SD card not inserted 2 No file	Insert the card to record or take photos
Card error/please format	Wrong card format	Enter the menu to format the SD card
SENSOR FAIL	Sensor initialization error, unable to record	If the problem persists, please contact the dealer for repair
SD card is full	Insufficient remaining space when taking photos Displayed when taking photos	Please delete or unlock some files to free up space

5. Instructions for using WiFi

1. Install the mobile APP

Select a commonly used mobile phone to scan the device WiFi information QR code or search for 6 Detective on your mobile phone to download and install

2. WiFi mobile phone connection

1) Check the WiFi information in the device system settings to turn on WiFi

2) Search WiFi on your mobile phone, find the WiFi name: H30D-E42AEF37, enter the password: 12345678 to connect

Note: A recorder can only be connected to one mobile phone at a time

3. APP operation

1) Open the APP, add the recorder, and enter the recorder preview interface after adding successfully according to the steps

Click the preview image to enter the playback mode

Long press the preview image to select batch download or delete files

Note: The playback resolution of undownloaded videos is low, it is recommended to download before playing.

4. Other instructions

WiFi cannot be connected: Make sure the recorder is turned on or connected to other mobile phones (only one mobile phone can be connected at the same time)

The recorder cannot record: Make sure the SD card is full or damaged, you can format the SD card or replace the SD card for troubleshooting

The APP screen is not smooth or real-time: Try to keep the background software of the mobile phone as few as possible, and keep the phone close to the recorder, you can close the APP and restart (Wifi competes for bandwidth on the same channel, and adjacent channels interfere with each other)

The image quality is not clear: Check whether there is any stolen goods on the recorder lens and car windshield

This system supports up to 128G Micro SD memory card. In order to keep the video recording smooth, it is recommended to use Class 10 or higher high-speed cards. At the same time, do not plug or unplug the SD card when the system is turned on to avoid damage to the SD card.

SD cards are consumables, so please maintain them regularly, such as formatting them every 1 to 2 months.

Wednesday, May 14, 2025

This device complies with part 15 of the FCC Rules. Operation is subject to the following two conditions: (1) This device may not cause harmful interference, and (2) this device must accept any interference received, including interference that may cause undesired operation.

Any Changes or modifications not expressly approved by the party responsible for compliance could void the user's authority to operate the equipment.

Note: This equipment has been tested and found to comply with the limits for a Class B digital device, pursuant to part 15 of the FCC Rules. These limits are designed to provide reasonable protection against harmful interference in a residential installation. This equipment generates uses and can radiate radio frequency energy and, if not installed and used in accordance with the instructions, may cause harmful interference to radio communications. However, there is no guarantee that interference will not occur in a particular installation. If this equipment does cause harmful interference to radio or television reception, which can be determined by turning the equipment off and on, the user is encouraged to try to correct the interference by one or more of the following measures:

- Reorient or relocate the receiving antenna.
- Increase the separation between the equipment and receiver.
- Connect the equipment into an outlet on a circuit different from that to which the receiver is connected.
- Consult the dealer or an experienced radio/TV technician for help.
- This equipment complies with FCC radiation exposure limits set forth for an uncontrolled environment. This equipment should be installed and operated with minimum distance 20cm between the radiator & your body.