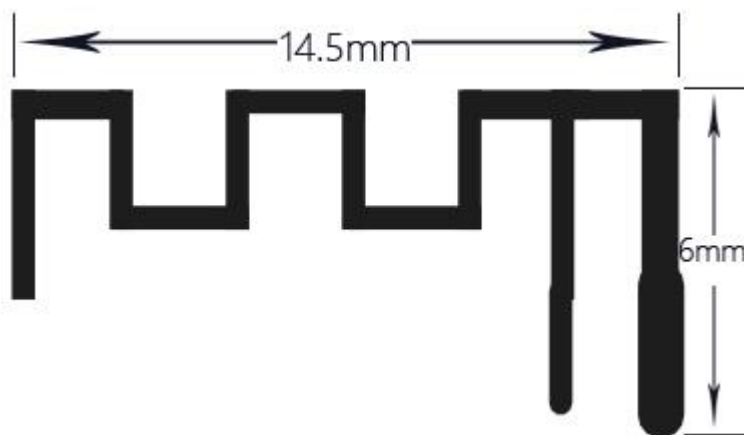


## 1. Antenna Description:

|                 |   |
|-----------------|---|
| Antenna type    | External antenna  |
| Model           | CP4H  |
| Frequency range | 2400-2500MHz  |
| Manufacturer    | Shenzhen Jianuzi Technology Co., Ltd  |
| Address         | 408, Building D, Youzhu International Science and Technology Park, No.1 Liyuan 2nd Road, Zhancheng Community, Fuhai Street, Bao'an District, Shenzhen |
| ANT Peak Gain   | 2.50 dBi  |

## 2. Antenna Photo:



## 3. Test Equipment & Conditions

### 3.1 Test instrument

VSWR is tested using Agilent E5071B connected to

a hand mechanism, and the status is free space.

### 3.2 Test environment and methods

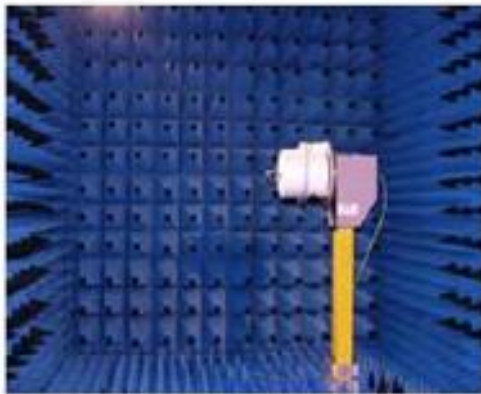
Dark room specifications: ETS-743

TD-SCDMA test equipment: StarPoint SP6010/Agilent 8960

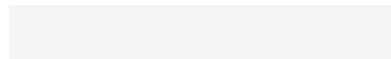
LTE-TDD/FDD-SCDMA test equipment: StarPoint SP8011/CMW500

WCDMA/GSM/CDMA test equipment: Agilent 8960

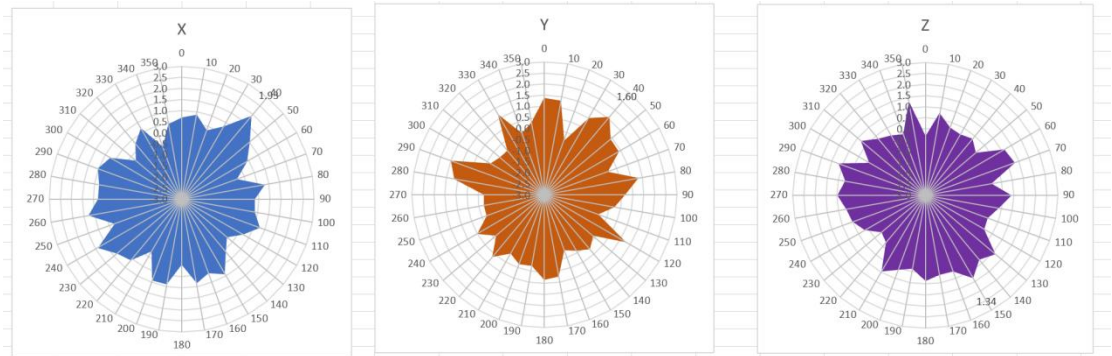
Passive efficiency testing equipment: Agilent Technologies E5071B



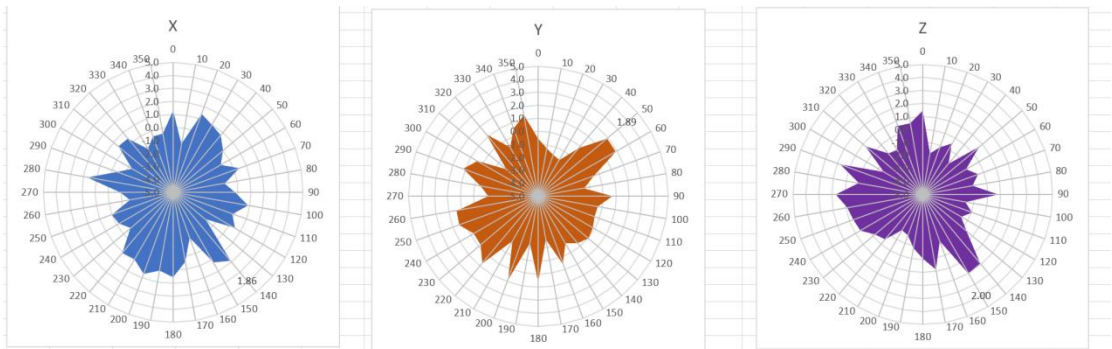
## 4 . Antenna Radiation Pattern



## 2400MHz



## 2450MHz



## 2500MHz

