

Product Introduction: Musical Bubble Wall

The Musical Bubble Wall is a sleek, wall-mounted display that combines mesmerizing bubble visuals with high-quality sound. Its elegant design features a central bubble lamp section flanked by two full-range speakers, delivering immersive audio and captivating light effects.

Key Features:

- Dimensions: 1195mm (W) x 595mm (H) x 85mm (D)
- Audio: Two 4-inch speakers with adjustable bass, treble, and Bluetooth connectivity
- Lighting: Remote-controlled dynamic light effects
- Power: 12V DC, 4A power supply
- Design: Glossy white finish with clean, modern aesthetics

Ideal for homes, offices, sensory rooms, and commercial spaces, this product offers relaxation and sophistication, creating a calming atmosphere with its stunning blend of bubbles, light, and sound.

Product Includes:

1. Bubble Water Column Lamp (Main Unit): Complete with integrated features for bubbles and lights.
2. Power Adapter (4A, 12V DC): Provides reliable power for smooth operation.
3. Funnel: For easy water filling during setup.
4. Lighting Remote Control: Enables adjustment of colors and lighting modes.
5. Mounting Bracket Set**: Ensures secure wall installation.
6. Expansion Screws Pack**: For reliable and easy mounting on various wall types.

Tools Required for Installation

1. Phillips Screwdriver: For securing the stabilizing bracket and screws.
2. Hammer: To insert and secure expansion screws into the wall.
3. Measuring Tape: To measure the installation height and position accurately.
4. Spirit Level: To ensure the bracket and lamp are mounted straight.
5. 5mm Drill Bit and Drill: For drilling holes in the wall to mount the bracket.

Step 1: Preparing for Installation

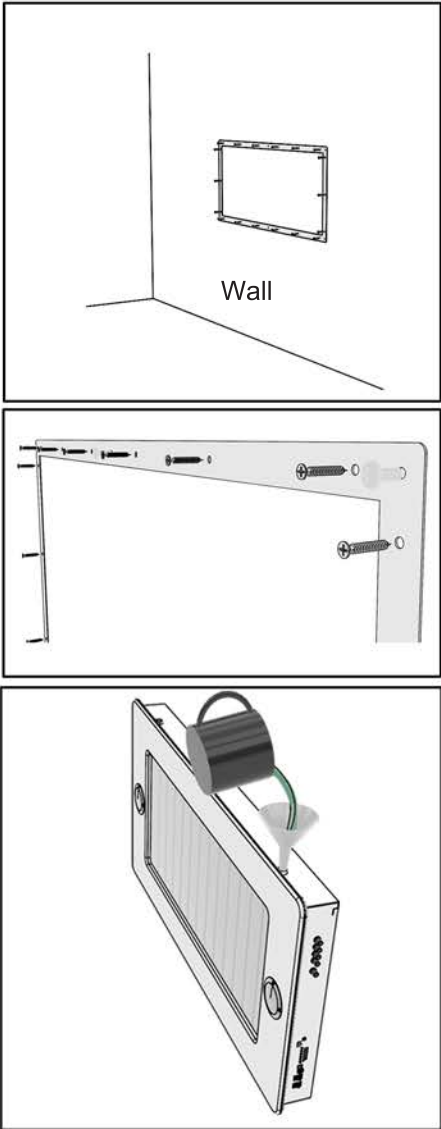
1. Choose the Installation Location
 - Select a stable and flat wall near a power outlet.
 - Ensure there is enough space for the bubble column lamp and its components.
 - The area should be free from obstructions and accessible for setup.
2. Mark the Installation Position
 - Use a measuring tape to determine the desired height for the lamp.
 - Hold the stabilizing bracket at the chosen height against the wall.
 - Use a spirit level to ensure the bracket is horizontally straight.
 - Mark the screw hole positions on the wall with a pencil.

Step 2: Installing the Stabilizing Bracket

1. Drill Holes in the Wall
 - Use a 5mm drill bit and drill holes at the marked positions on the wall.
 - Ensure the holes are deep enough to securely hold the expansion screws.
2. Insert Expansion Screws
 - Place the provided expansion screws into the drilled holes.
 - Use a hammer to gently tap them until they are flush with the wall surface.
3. Secure the Bracket
 - Align the stabilizing bracket with the expansion screws.
 - Use a Phillips screwdriver to tighten the screws and secure the bracket to the wall.
 - Ensure the bracket is firmly attached and does not wobble.

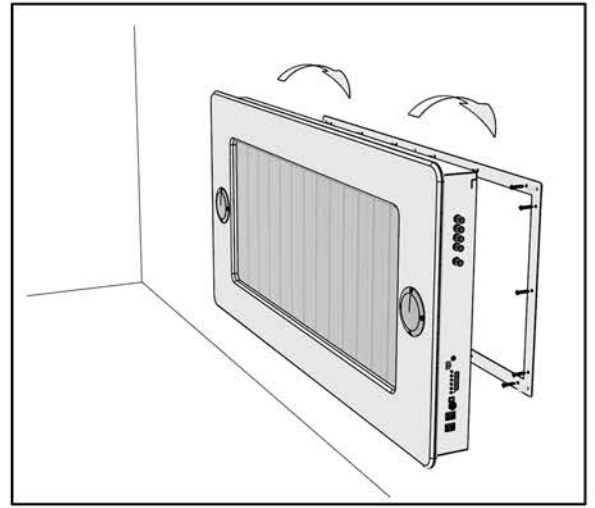
Step 3: Adding Water to the Bubble Column Lamp

1. Position the Lamp
 - Place the bubble column lamp upright against the wall in its intended position. Ensure it is stable before proceeding.
2. Prepare for Filling
 - Take the provided funnel and a water container (e.g., a jug or cup) filled with clean water.
3. Start Adding Water
 - Insert the funnel into the water inlet located at the top of the lamp.
 - Slowly pour water into the funnel, allowing it to flow into the acrylic tank.
4. Monitor the Water Level
 - Continue adding water until it reaches the visible upper edge of the acrylic tank.
 - Stop adding water once the tank is full and ensure no water overflows.



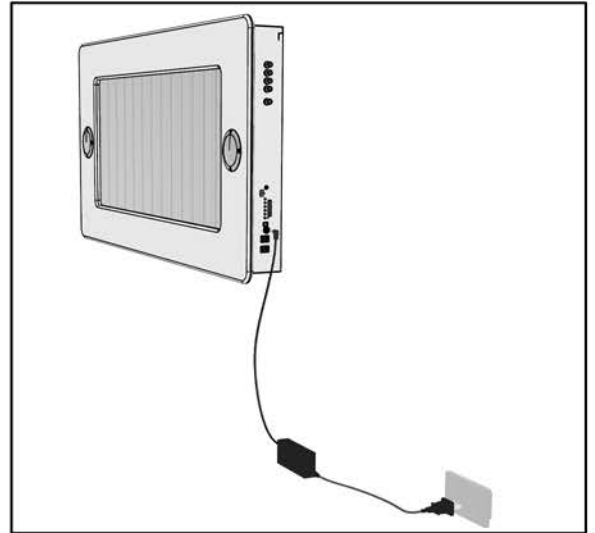
Step 4: Mounting the Bubble Column Lamp onto the Wall

1. Prepare for Mounting
 - Ensure the stabilizing bracket is securely attached to the wall.
 - Confirm the water has been added and the lamp is stable in its upright position.
2. Lift the Lamp
 - This step requires **two people**:
 - One person should hold the top of the lamp.
 - The other person should hold the bottom.
3. Align with the Wall Bracket
 - Carefully lift the bubble column lamp.
 - Align the back of the lamp with the open slots on the stabilizing wall bracket.
4. Hang the Lamp
 - Slowly lower the lamp onto the bracket, ensuring it securely fits into the designated slots.
 - Confirm that the lamp is evenly hung and firmly supported by the bracket.



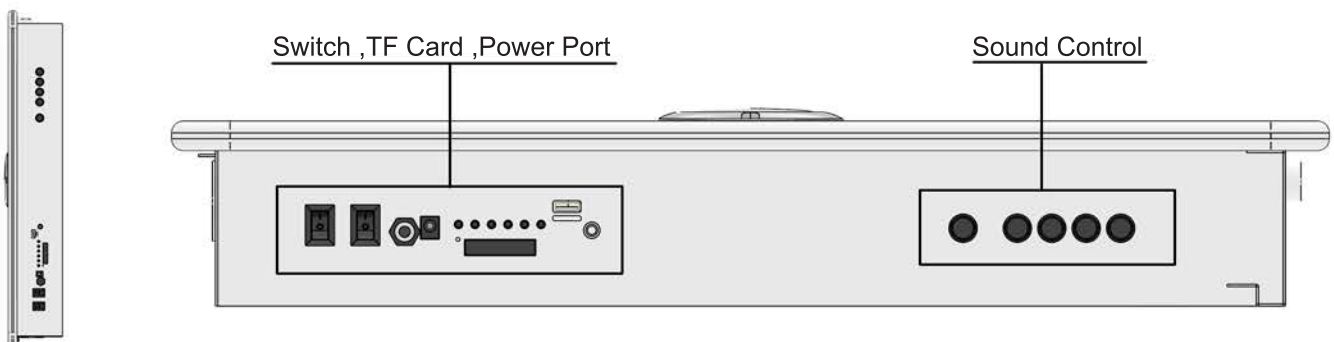
Step 5: Connecting the Power Supply

1. Prepare the Power Adapter
 - Take the provided power adapter from the accessories.
 2. Connect to the Product
 - Insert the DC plug of the power adapter into the **DC socket** located on the side of the bubble column lamp.
 - Ensure the plug is securely inserted to avoid loose connections.
 3. Plug into a Power Outlet
 - Insert the other end of the power adapter into a nearby wall socket.
 4. Verify Operation
 - Check that:
 - Bubbles begin to rise inside the column.
 - The LED lights inside the lamp illuminate.
 - The lights on the amplifier panel on the side of the product are on.
- If all components are functioning as described, the product is working correctly.



Step 6: Setting Up and Using the Music Control Panel

1. Locate the Music Control Panel
 - Find the **music control panel** on the side of the bubble column lamp.
 - This panel features controls for adjusting sound settings and a Bluetooth module.
2. Connect to Bluetooth
 - Turn on the Bluetooth function of your smartphone, tablet, or other Bluetooth-enabled device.
 - Search for available devices and look for the Bluetooth name: **AMP**.
 - Select **AMP** to connect.
 - Once connected, you can play music through the lamp's speakers.
3. Adjust Sound Settings
 - Use the music control panel to fine-tune the sound to your preference:
 - Bass: Adjust the depth of low-frequency sounds.
 - Mid: Control the clarity of mid-range frequencies.
 - Treble: Adjust high-frequency sounds for crispness.
 - Volume: Increase or decrease the overall sound level.
4. Play Your Favorite Music
 - Open your music app and select a track to play.
 - Enjoy the immersive combination of sound and the visual effects of bubbles and lights.



Step 7: Maintenance and Care

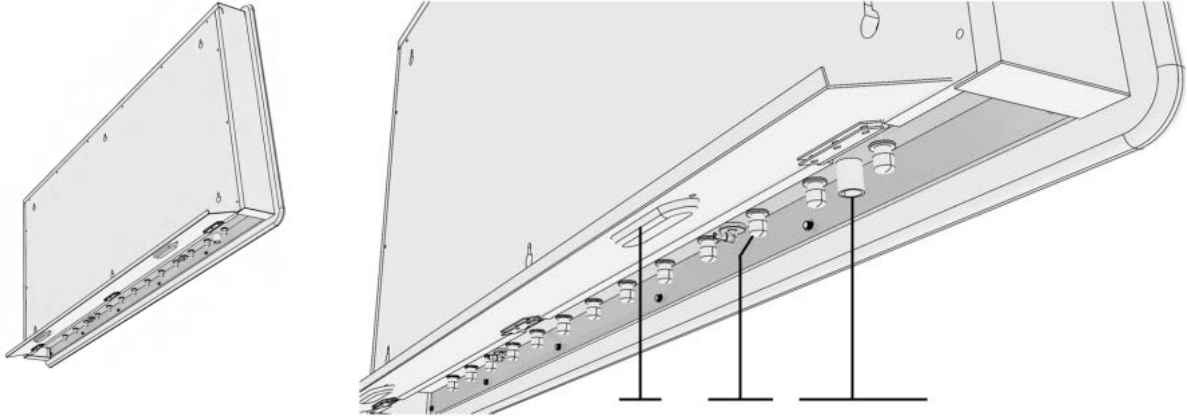
Proper maintenance ensures the longevity and performance of your bubble column lamp. Follow these steps to keep your product in excellent condition:

1. Avoid Direct Sunlight

- Do not install the lamp in an area exposed to direct sunlight.
- Sunlight can cause algae and bacteria growth in the water, which can affect the appearance and cleanliness of the product.

2. Adjusting Airflow

- Open the base of the lamp to access the **airflow control knobs** for each air nozzle.
- To adjust the airflow:
 1. Turn the knobs to regulate the bubble intensity.
 2. If no bubbles are forming, adjust the knobs until the airflow resumes.



3. Draining Water

- The **drainage outlet** is located at the bottom of the lamp and is easy to identify.
- Steps to drain water:
 1. Place a bucket beneath the drainage outlet.
 2. Remove the rubber stopper to release the water.
 3. Allow the water to flow completely into the bucket for disposal.

4. Cleaning the Acrylic Panel

- The acrylic panel is fragile and must be handled with care.
- Use a **soft cloth** to clean the surface to avoid scratches.
- Avoid using harsh chemicals or abrasive materials to prevent damage.

5. Troubleshooting Common Issues

- **Product Not Turning On**
 - Check the power adapter to see if its indicator light is on.
 - If the light is off, inspect the power plug for loose connections or replace the adapter if necessary.
- **Bubbles Working but Lights Not Turning On:**
 - Use the **lighting remote control** to turn on the lights.
 - Ensure the batteries in the remote are functional.
- **Lights Working but No Bubbles:**
 - This may indicate an issue with the **internal controller**.
 - Adjust the airflow control knobs. If the issue persists, contact the seller for replacement parts or technical support.

By following these care and maintenance steps, you can ensure the optimal performance of your bubble column lamp. For unresolved issues or additional assistance, reach out to the seller.

FCC WARNING

This device complies with part 15 of the FCC Rules. Operation is subject to the following two conditions: (1) This device may not cause harmful interference, and (2) this device must accept any interference received, including interference that may cause undesired operation.

Note: This equipment has been tested and found to comply with the limits for a Class B digital device, pursuant to part 15 of the FCC Rules. These limits are designed to provide reasonable protection against harmful interference in a residential installation. This equipment generates, uses and can radiate radio frequency energy and, if not installed and used in accordance with the instructions, may cause harmful interference to radio communications.

However, there is no guarantee that interference will not occur in a particular installation. If this equipment does cause harmful interference to radio or television reception, which can be determined by turning the equipment off and on, the user is encouraged to try to correct the interference by one or more of the following measures:

- Reorient or relocate the receiving antenna.
- Increase the separation between the equipment and receiver.
- Connect the equipment into an outlet on a circuit different from that to which the receiver is connected.
- Consult the dealer or an experienced radio/TV technician for help.

Note: The Grantee is not responsible for any changes or modifications not expressly approved by the party responsible for compliance. Such modifications could void the user's authority to operate the equipment.

The device has been evaluated to meet general RF exposure requirement.

This equipment complies with FCC's RF radiation exposure limits set forth for an uncontrolled environment. This device and its antenna(s) must not be co-located or in conjunction with any other antenna or transmitter.