

Maintenance & Cleaning

MAINTENANCE

- The SensaMist Scent Diffuser must be operated and maintained in accordance with this user manual.
- **DO NOT** mix the fragrance oil refill with water.
- **DO NOT** tilt the device when replacing the fragrance oil.
- Ensure the atomizer nozzle head is screwed on tightly to the top of the fragrance oil bottle before reinstalling it.

CLEANING

Clean every 3-6 months, depending on usage. To clean the diffuser:

1. Replace oil bottle with a 50 ml bottle of industrial alcohol (isopropyl alcohol)
2. Run on high for 5-10 minutes in a ventilated area.

Troubleshooting

Always wear PPE when inspecting the device for faults.



NO DISPLAY	<ul style="list-style-type: none">• Check that the power adapter is plugged in to a power outlet and the power is on.• Check that the power adapter is connected to the device.• Check that the power adapter is not faulty - check the wire has not been damaged.
NO SCENT	<ul style="list-style-type: none">• Check that the pump is working - you should be able to hear it.• Check that the atomizer nozzle is not blocked.• Check that there is fragrance oil in the bottle.• Check that the tube is attached and not blocked.
LEAKING	<ul style="list-style-type: none">• Oil leakage inside the machine: Check that the fragrance oil bottle is tightly attached to the atomizer nozzle head.• Oil leakage from the nozzle: Check that the nozzle is clean and free from debris.
UNUSUAL NOISES	<ul style="list-style-type: none">• Check that the nozzle is not blocked.• Check refill is installed properly.

Compliance

FCC Compliance Statement

This device complies with Part 15 of the FCC Rules. Operation is subject to the following two conditions:

1. This device may not cause harmful interference.
2. This device must accept any interference received, including interference that may cause undesired operation.

Changes or modifications not expressly approved by the party responsible for compliance could void the user's authority to operate the equipment.

This equipment has been tested and found to comply with the limits for a Class B digital device, pursuant to Part 15 of the FCC Rules. These limits are designed to provide reasonable protection against harmful interference in a residential installation. This equipment generates, uses and can radiate radio frequency energy and, if not installed and used in accordance with the instructions, may cause harmful interference to radio communications. However, there is no guarantee that interference will not occur in a particular installation.

If this equipment does cause harmful interference to radio or television reception, which can be determined by turning the equipment off and on, the user is encouraged to try to correct the interference by one or more of the following measures:

- Reorient or relocate the receiving antenna.
- Increase the separation between the equipment and receiver.
- Connect the equipment into an outlet on a circuit different from that to which the receiver is connected.
- Consult the dealer or an experienced radio/TV technician for help.

FCC Radiation Exposure Statement

This equipment complies with FCC radiation exposure limits set forth for an uncontrolled environment. This equipment should be installed and operated with minimum distance 20cm between the radiator and your body. This transmitter must not be co-located or operating in conjunction with any other antenna or transmitter.

MODEL	FCC ID
SensaMist SM3000	2BOO9-SM3000

Warranty

CONDITIONS OF A LIMITED WARRANTY

- Subject to the terms and conditions hereinafter your Vectair product is automatically covered by a standard limited warranty for the period laid out in the table below from the date of purchase only from an authorized Vectair Distributor.
- We will repair or replace any defect that arises due to faulty materials or workmanship free of charge during this Warranty Period.
- Notwithstanding anything to the contrary, should any person other than an authorized representative of Vectair attempt a repair to your product, without prior consent, the Warranty will become invalid.
- Any claim made under the terms of the Warranty should have an original invoice or bill of sale issued at the time of purchase available should this be required to validate the warranty.
- Vectair reserves the right to make changes or improvements in design or manufacturing without assuming any obligation to modify products previously manufactured and/or sold.
- The product warranty is only valid in the country where the product was purchased.
- This Warranty will follow the law of the respective markets should it differ from the stated warranty policy.
- This Warranty is governed by English law unless otherwise agreed and is in addition to and does not diminish your statutory or other legal rights.

MODEL	WARRANTY (YEARS)
SensaMist SM3000	1

EXCLUSIONS OF WARRANTY

This Warranty does not cover:

- Faults that arise as a result of negligence, wilful abuse, improper use, shock, electrostatic discharge, heat or humidity beyond product specifications. (including but not limited to failure to comply with the installation and user instructions).
- Incorrect installation, maintenance, or modification.
- Malfunctions caused by other equipment.
- Use of dispensers with non-approved refills.
- Product(s) returned with removed, damaged, or tampered labels or any alterations (including removal of any component or external electrical covers).
- Consequential damages; incidental damages; and costs related to removal and installation.
- Losses caused by unforeseeable events (including but not limited to flood, lightning storms, frost, or other bad weather conditions, acts of God), fair wear and tear, shipping accidents, acts of war, incorrect voltage supply, or use of unauthorized refills.
- Any loss due to cancellation of any events, rent of replacement equipment, costs due to third parties, loss of profit, incidental or consequential damages, or any other indirect cost or losses however incurred.



IMPORTANT! WARRANTY VOID IF USED WITH NON-VECTAIR SENSAMIST FRAGRANCE OILS AND MAY CAUSE DIFFUSER MALFUNCTION.



SCAN FOR ONLINE
PRODUCT SUPPORT

Vectair Systems (Netherlands) B.V.

De Boelelaan 7, 7th Floor,
1083HJ Amsterdam, Netherlands

Tel: +31 208 025 280

Email: emea.info@vectairsystems.com

Vectair Systems Ltd.,

Unit 3, Trident Centre,
Armstrong Road, Basingstoke,
Hampshire, RG24 8NU, UK

Tel: +44 (0) 1256 319 500

Email: emea.info@vectairsystems.com

Vectair Systems, Inc.,

2095 Spicer Cove,
Covington Way Distribution Center,
Memphis, TN 38134, USA

Tel: +1 901 373 7818

Email: info@vectairsystems.com

www.vectairsystems.com



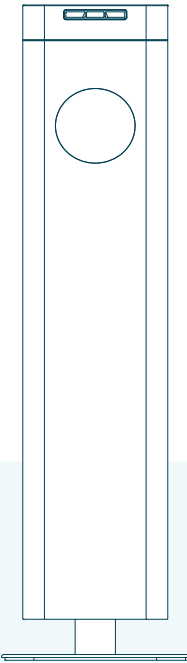
SENSAMIST® SM3000 SCENT DIFFUSER



WIRELESS APP
CONTROLLED

TECHNICAL SPECIFICATIONS

CODES:	GDIS-3000-S-2-EU GDIS-3000-S-2-US
VOLTAGE:	12V~2A
POWER:	15W
CAPACITY:	1500 ML / 50 FL OZ
WEIGHT:	5.8 KG / 12.8 LB
VOLUME:	<45 DBA
SIZE:	186mm x 186mm x 650mm (L x W x H) 7.3" x 7.3" x 25.6"



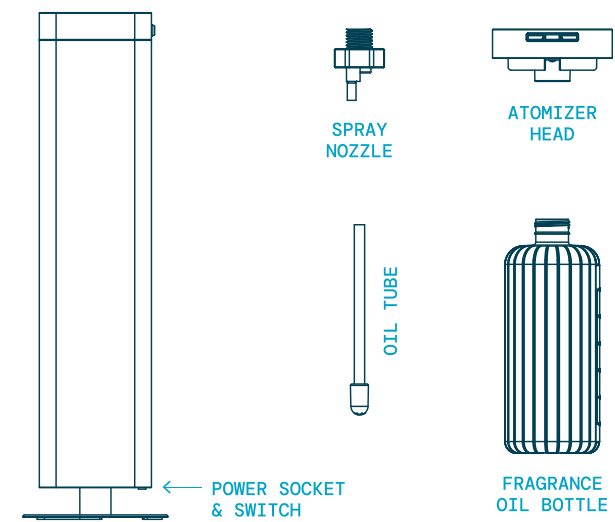
www.vectairsystems.com



LAB-3930-001

- THE APPLIANCE IS ONLY TO BE USED WITH THE RECOMMENDED VAPORIZING MEDIUM. THE USE OF OTHER SUBSTANCES MAY GIVE RISE TO A TOXIC OR FIRE RISK.
- THIS APPLIANCE CAN BE USED BY CHILDREN AGED FROM 16 YEARS AND ABOVE AND PERSONS WITH REDUCED PHYSICAL, SENSORY OR MENTAL CAPABILITIES OR LACK OF EXPERIENCE AND KNOWLEDGE IF THEY HAVE BEEN GIVEN SUPERVISION OR INSTRUCTION CONCERNING USE OF THE APPLIANCE IN A SAFE WAY AND UNDERSTAND THE HAZARDS INVOLVED.
- CHILDREN SHALL NOT PLAY WITH THE APPLIANCE.
- CLEANING AND USER MAINTENANCE SHALL NOT BE MADE BY CHILDREN WITHOUT SUPERVISION.
- FOR PROFESSIONAL USE ONLY.

Installation



INSTALLATION WARNINGS

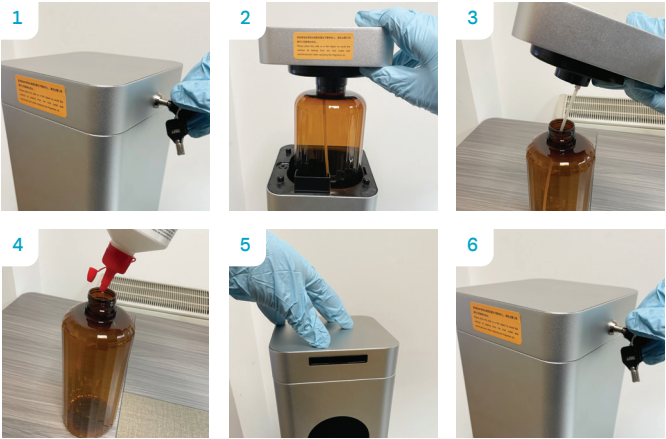
- The device must be kept upright at all times once installed.
- Only use with the supplied power adapter. Do not use if damaged.
- Do not use the device in high temperatures or a wet environment.
- Keep away from heat, moisture, and flammable/explosive materials.
- Do not install near or above flammable, painted or varnished surfaces.
- Mount on a sturdy, flat surface that supports the device's weight.
- Ensure adequate ventilation and keep surrounding space clear.
- Do not obstruct the nozzle when the device is active.
- Do not spill water, or conductive or corrosive liquid on the outside or inside the device.
- Recommended Operating Temperature: 15°C to 35°C (59°F to 95°F).
- Only use with Vectair branded diffuser refill oils. **DIFFUSER WARRANTY VOID IF USED WITH NON VECTAIR SENSAMIST FRAGRANCE OILS.**

GENERAL PRECAUTIONS & SAFETY

- Read this manual before using the diffuser.
- Wear eye protection and chemical-resistant gloves when handling fragrance oil.
- Clean any spills immediately. For more information, see the label of the fragrance oil refill.
- If storing the device for an extended period, clean diffuser with rubbing alcohol before it is packed away.

FILLING THE FRAGRANCE BOTTLE

- Turn off and unplug before filling.
1. Wearing PPE and using the included key, turn the lock clockwise.
 2. Lift the atomizer head and oil bottle upward and out of the diffuser.
 3. Unscrew the atomizer from the top of the bottle.
 4. Carefully fill the bottle with refill oil. Then reattach the atomizer to the top of the bottle and screw it on tightly.
 5. Place the atomizer and oil bottle back into the diffuser and gently push down.
 6. Turn the lock anti-clockwise to lock the atomizer in place and dispose of the gloves safely.



Operating

ON/OFF/RESET

Connect the power supply, set the power switch to the **on** position and program the device manually or via the app. To turn the device **off**, press and hold **[Set]** for 5 secs or press the power switch.

The unit will default to the following settings: 00:00 to 23:59, Monday-Sunday, 10 sec **ON** / 120 sec **OFF**.

To revert the device to factory settings: press and hold **[Back]** + **[>]** for 5 seconds, all the icons on the display will flash.

When the dispenser is plugged and unplugged, it will remember the last settings.

Programming

MOBILE APP PROGRAMMING

1. Download and install the **SensaMist App** from your App Store or scan the QR code (right) with your mobile/cell phone. Supports Android and IOS.



2. Ensure **'Bluetooth'** connectivity is enabled on your mobile/cell phone.



3. Open the SensaMist App and choose **Bluetooth** when prompted. Ensure the diffuser is powered on and close by.

4. Select the diffuser you want from the device list.

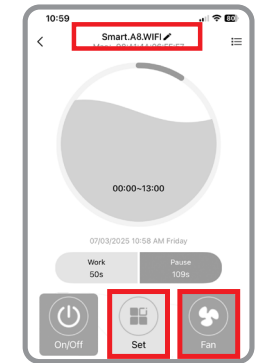
SmartAroma.A8

A password may be required. (Default: 1234).

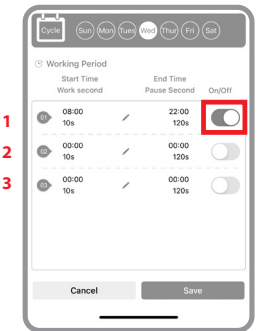
5. From the device overview you can rename the device (if required) by tapping on the pencil icon.

6. This device is fitted with a fan which helps disperse the fragrance around the room. The fan can be cycled on/off by tapping the **Fan** button.

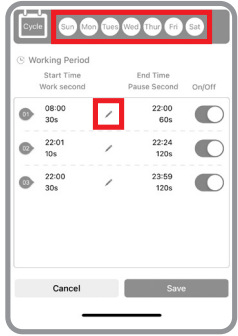
7. To change the programming, tap the **Set** button. Up to 3 different working periods can be programmed.



8. Individual working periods can be turned on or off with the sliders. The picture shows only Working Period 01 is turned on.



9. Select the days you want to change the programming for at the top of this menu; the picture shows Monday to Sunday has been selected for this 'Working Period'.

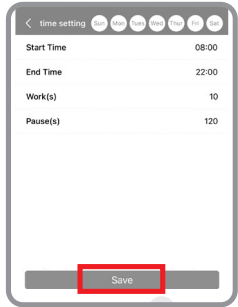


10. To edit the working period (e.g. 01), tap the pencil icon.

11. From this menu, you can set the on and off times for each working period and adjust the scent diffusion (Work Time) and pause duration (Pause Time) in seconds.

For example, a program may run from 08:00 to 22:00, Monday to Sunday, with a 10-second diffusion followed by a 120-second pause.

12. Tap **Save** at the bottom of this screen to save the setting.



Note: Using the app, you can check the **Start** and **Finish** Time, **Work** and **Pause**, **On/Off** and **Set** options.

MANUAL PROGRAMMING

Note: If programming the device manually, it is advisable to do this before filling with fragrance oil.

Initial set up (current time and day)

Notes: The clock is 24hr.

If no selection is made within 10 seconds, the screen returns to the main menu.

The current time and day can be set automatically by connecting to the device via the app, or set manually using the steps below:

1. To activate the display, tap anywhere on the unlit control buttons. The display will then light up.
2. Press and hold **[>]** + **[+]** buttons for 2 secs.
3. Set the hours: use **[+]** to cycle through the values and **[>]** to confirm.
4. Set the minutes (tens): use **[+]** to cycle through the values and **[>]** to confirm.
5. Set the minutes (ones): use **[+]** to cycle through the values and **[>]** to confirm.
6. Set the current day: use **[+]** to cycle through the days and press **[Set]** to confirm and exit the initial set up mode.

Fan

Press the fan symbol to turn it on/off. If this is done during a 'Work Event' period, a short test will then be performed, and the countdown will start again.

Lock and Password

1. To lock the settings, a password can be set by pressing the unlit lock button on the display. The first digit will flash. Use **[+]** to cycle through the value and **[>]** to move to the next field. The password must be entered identically twice. Press **[Set]** to confirm.
2. A lit lock symbol on the display indicates a password has already been set and will need to be entered correctly before editing any of the settings. The lock symbol will only light up when you try to edit the settings.
3. The password can be changed by pressing the unlit lock button . Enter the current password using **[+]** and **[>]**, then enter the new password twice using **[+]** and **[>]**. Press **[Set]** to confirm.
4. The password can be removed completely by reverting the device to factory settings.

Set Working Periods (Work Time)

You can program up to 3 separate work events per day.

Notes: If no selection is made in 10 seconds, the screen returns to the main menu.

Adjusting the settings for Monday will automatically set the same programming of all days of the week. This can be used to quickly program the device.

Press the **[Set]** button to enter the programming menu (press **[Back]** at any time to return to the previous screen or setting).

If a password has been set, this will need to be entered, using **[+]** to cycle through the values and **[>]** to move to the next field. Press **[Set]** to confirm.

1. **DAY/EVENT ON (1):** Program day/start time
 - a. Select the **weekday** using **[+]** to cycle through the days of the week and **[Set]** to confirm. Only one day can be selected at a time.
 - b. The **event** counter will flash. Use **[+]** to cycle through the events and press **[>]** to confirm the event to be edited. Note: up to 3 events can be set for each day.
 - c. 'On time'/hour will flash. Set the program 'on time' **hours** using **[+]** to adjust the value and press **[>]** to confirm.
 - d. 'On time'/minute will flash. Set the program 'on time' **minutes** using **[+]** to adjust the value and press **[>]** to confirm.
2. **EVENT OFF (1):** Program end time
 - a. 'Off time'/hour will flash. Set the program 'off time' **hours** using **[+]** to adjust the value and press **[>]** to confirm.
 - b. 'Off time'/minute will flash. Set the program 'off time' **minutes** using **[+]** to adjust the value and press **[>]** to confirm.

Control Scent Intensity: Adjust scent intensity by changing the ON/OFF cycle duration. This is known as 'Work Time'.

3. **SCENT WORK (1):** Program scent on time - 'Working' period/seconds will flash. Set the 'working' period time in **seconds** using **[+]** to adjust the value and **[>]** to move to the next digit then press **[>]** again to confirm. First set the hundreds, then tens, then ones (seconds) (e.g. 001 – 999s).
4. **SCENT PAUSE (1):** Program scent off time - 'Pause' period/seconds will flash. Set the 'pause' period time in **seconds** using **[+]** to adjust the value and **[>]** to move to the next digit then press **[>]** again to confirm. First set the hundreds, then tens, then ones (seconds) (e.g. 001 – 999s). The display will flash 'on'.
5. Press **[Set]** at any time during the process to confirm any changes and exit the Work set up mode. If this is done during a 'Work Event' period, a short test will then be performed and the countdown will start again.

Repeat the entire 'Working Periods' process to set up subsequent days/events.

Notes: If two (or more) periods are set up to work at the same time/day, the first period will override the others.

To set a day with no 'Work Time' – set the time to 00:00.