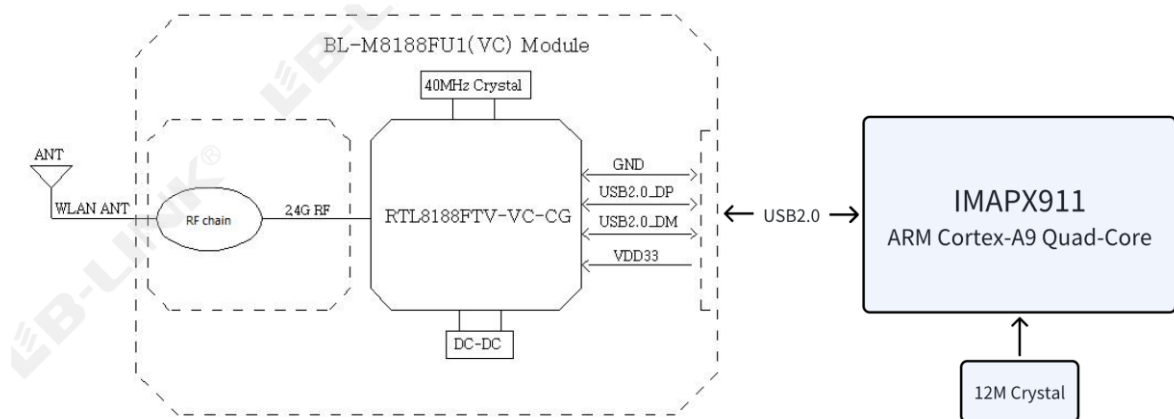
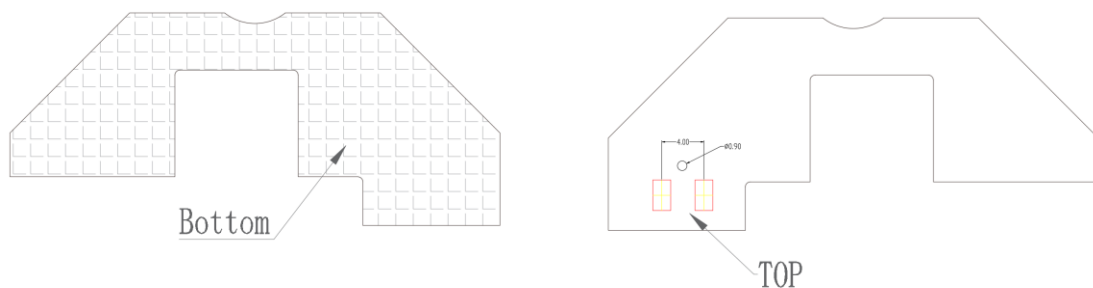
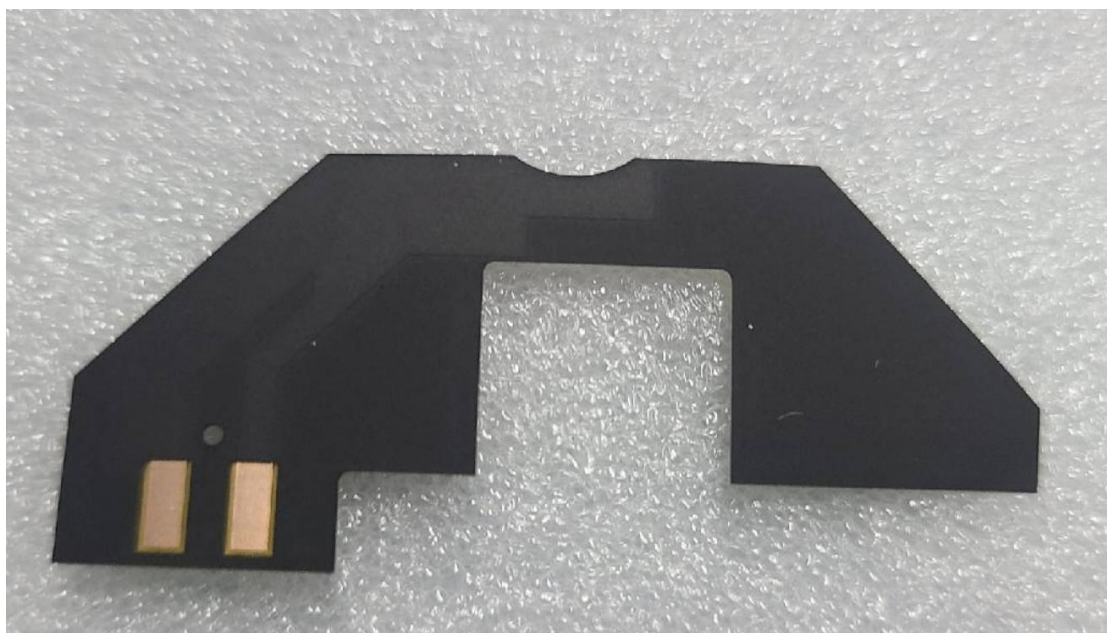


RF circuit Operating Description

RF communication In this system, the main control chip is connected to the data communication through the USB interface and the WiFi module. The WiFi module transmits and receives signals through the antenna to achieve communication with the outside world.

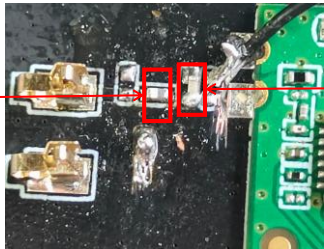
ANT Name	BYTE_WIFI_ANT
Dimension	46.5mm*20.1mm
Manufacturing Company	Shanghai Welletronics Future Communication Technology Co.,Ltd
Address	Rm 111,Building 11,No.1101 HuYi RD, Jiading District,Shanghai
ANT Freq	2.4G RF





Matching changes S5.6NH P1.5PF

5.6NH



1.5PF

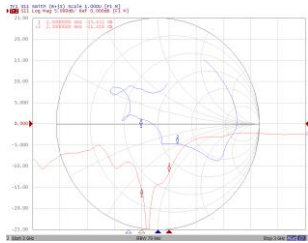
Ground to ground treatment



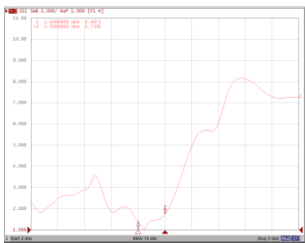
Sanding with the red box
circled out the enclosure
motherboard contact part

S11

LOG

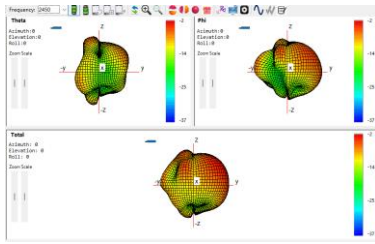


SWR

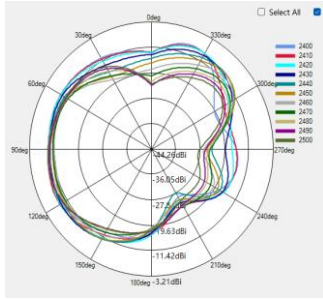


3D, 2D image

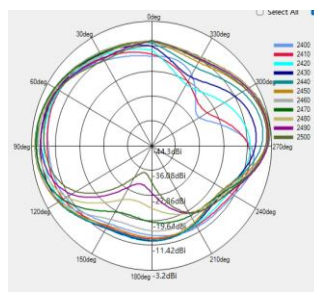
3D image



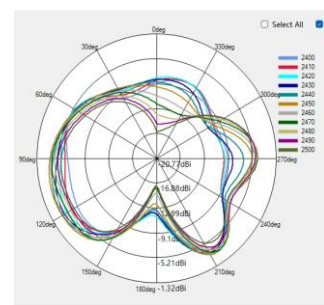
2D image theta=90°



2D image phi=90°



2D image total



WiFi efficiency

Passive test data			
frequency	efficiency	Gain	efficiency
2400	-7.64	-2.73	17.24
2410	-7.49	-2.52	17.84
2420	-7.24	-2.06	18.88
2430	-7.04	-1.7	19.76
2440	-7	-1.63	19.94
2450	-6.94	-1.86	20.25
2460	-7.07	-2.43	19.64
2470	-7.35	-3.01	18.42
2480	-7.51	-3.19	17.73
2490	-7.78	-3.24	16.66
2500	-8.12	-3.5	15.42